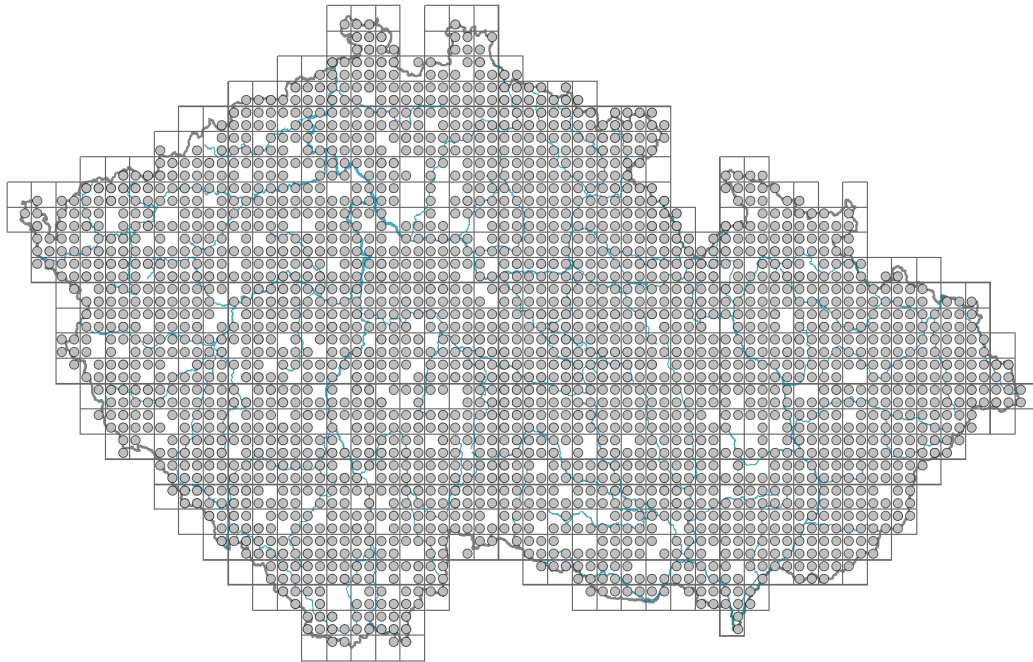


Poa annua agg.

Distribution



Map info

- revised records
- unrevised records

On the map are not visualized records without the coordinates and records marked as incorrect or doubtful.



Habitus and growth type

Height [m]: **0.05-0.25**

Growth form: **annual herb, clonal herb**

Life form: **hemicryptophyte, therophyte**

Life strategy: **R - ruderal**

Leaf

Leaf presence and metamorphosis: **leaves present, not modified**

Leaf arrangement (phyllotaxis): **alternate**

Leaf shape: **simple - entire**

Stipules: **absent**

Petiole: **absent**

Leaf life span: **evergreen**

Leaf anatomy: **mesomorphic, hygromorphic**

Flower

Flowering period [month]: **January-December**

Flowering phase: **2 Acer platanoides-Anemone nemorosa (start of early spring)**

Flower colour: **green**

Perianth type: **reduced**

Perianth fusion: **reduced**

Inflorescence type: **panicula e spiculis composita**

Dicliny: **synoecious, gynomonoecious**

Generative reproduction type: **facultative autogamy, mixed mating**

Pollination syndrome: **wind-pollination, selfing, cleistogamy**

Fruit, seed and dispersal

Fruit type: **dry fruit - caryopsis**

Fruit colour: **brown**

Reproduction type: **by seed/spores and vegetatively, mostly by seed/spores, rarely vegetatively**

Dispersal unit (diaspore): **fruit, infrutescence or its part**

Dispersal strategy: **Allium (mainly autochory)**

Myrmecochory: **non-myrmecochorous (a)**

Belowground organs and clonality

Shoot metamorphosis: **stolon**

Storage organ: **stolon, tuft**

Type of clonal growth organ: **hypogeogenous rhizome**

Freely dispersible organs of clonal growth: **absent**

Shoot life span (cyclicality): **monocyclic shoots prevailing, dicyclic or polycyclic shoots prevailing**

Branching type of stem-derived organs of clonal growth: **sympodial**

Primary root: **absent**

Persistence of the clonal growth organ [year]: **4**

Number of clonal offspring: **1**

Lateral spreading distance by clonal growth [m]: **0.07**

Bud bank

Number of buds per shoot at the soil surface (root buds excluded): **5**

Number of buds per shoot at a depth of 0–10 cm (root buds excluded): **9**

Number of buds per shoot at a depth greater than 10 cm (root buds excluded): **0**

Size of the belowground bud bank (root buds excluded): **14**

Depth of the belowground bud bank (root buds excluded) [cm]: **3**

Number of buds per shoot at the soil surface (root buds included): **5**

Number of buds per shoot at a depth of 0–10 cm (root buds included): **9**

Number of buds per shoot at a depth greater than 10 cm (root buds included): **0**

Size of the belowground bud bank (root buds included): **14**

Depth of the belowground bud bank (root buds included) [cm]: **3**

Trophic mode

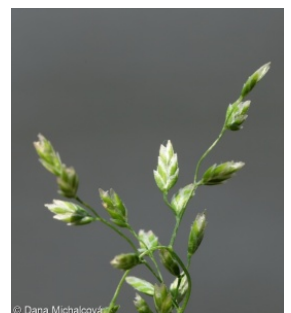
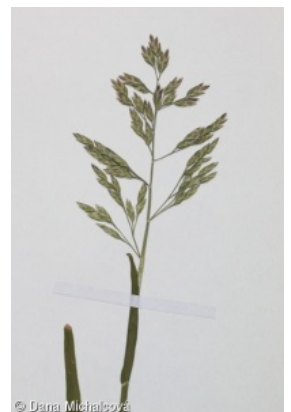
Parasitism and mycoheterotrophy: **autotrophic**

Carnivory: **non-carnivorous**

Symbiotic nitrogen fixation: **no nitrogen-fixing symbionts**

Karyology

Chromosome number (2n): **14, 28**



Ploidy level (x): **2, 4**

2C genome size [Mbp]: **2615.68**

1Cx monoploid genome size [Mbp]: **834.62**

Taxon origin

Origin in the Czech Republic: **native**

Ecological indicator values

Ellenberg-type indicator values

Light indicator value: **7 - half-light plant, mostly occurring at full light, but also in the shade up to about 30% of diffuse radiation incident in an open area**

Temperature indicator value: **5 - moderate heat indicator, occurring from lowland to montane belt, mainly in submontane-temperate areas**

Moisture indicator value: **6 - transition between values 5 and 7**

Reaction indicator value: **6 - transition between values 5 and 7**

Nutrient indicator value: **8 - pronounced nutrient indicator**

Salinity indicator value: **1 - salt tolerant, mostly on low-salt to salt-free soils, but occasionally on slightly salty soils**

Habitat and sociology

Occurrence in habitats

1 Vegetation of cliffs, screes and walls

1A Calcareous cliffs: **1 - rare occurrence**

1B Siliceous cliffs and block fields: **1 - rare occurrence**

1C Walls: **1 - rare occurrence**

1D Mobile calcareous screes: **1 - rare occurrence**

2 Alpine and subalpine grasslands

2B Subalpine tall-forb and tall-grass vegetation: **1 - rare occurrence**

3 Aquatic vegetation

3C Macrophytic vegetation of oligotrophic lakes and pools: **1 - rare occurrence**

4 Wetland and riverine herbaceous vegetation

4D Riverine reed vegetation: **1 - rare occurrence**

4E Reed vegetation of brooks: **1 - rare occurrence**

4H Vegetation of low annual hygrophilous herbs: **1 - rare occurrence**

4I Vegetation of nitrophilous annual hygrophilous herbs: **2 - optimum**

4J River gravel banks: **1 - rare occurrence**

4K Petasites fringes of montane brooks: **1 - rare occurrence**

4L Nitrophilous herbaceous fringes of lowland rivers: **1 - rare occurrence**

5 Vegetation of springs and mires

5A Hard-water springs with tufa formation: **1 - rare occurrence**

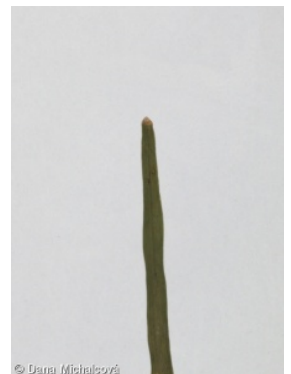
5B Lowland to montane soft-water springs: **1 - rare occurrence**

6 Meadows and mesic pastures

6B Montane mesic meadows: **1 - rare occurrence**

6C Pastures and park grasslands: **2 - optimum**

6G Vegetation of wet disturbed soils: **2 - optimum**



7 Acidophilous grasslands

7A Subalpine and montane acidophilous grasslands: **1 - rare occurrence**

7B Submontane Nardus grasslands: **1 - rare occurrence**

9 Sand grasslands and rock-outcrop vegetation

9B Open vegetation of acidic sands: **1 - rare occurrence**

9E Acidophilous vegetation of spring therophytes and succulents: **1 - rare occurrence**

9F Basiphilous vegetation of spring therophytes and succulents: **1 - rare occurrence**

10 Saline vegetation

10I Inland saline meadows: **1 - rare occurrence**

10J Saline steppes: **1 - rare occurrence**

11 Heathlands and scrub

11J Willow galleries of loamy and sandy river banks: **1 - rare occurrence**

11L Tall mesic and xeric shrub: **1 - rare occurrence**

11R Scrub and pioneer woodland of forests clearings: **1 - rare occurrence**

12 Forests

12T Robinia pseudacacia plantations: **1 - rare occurrence**

12V Spruce plantations: **1 - rare occurrence**

12W Pine and larch plantations: **1 - rare occurrence**

13 Anthropogenic vegetation

13A Annual vegetation of ruderal habitats: **2 - optimum**

13B Annual vegetation of arable land: **2 - optimum**

13C Annual vegetation of trampled habitats: **4 - constant dominant**

13D Perennial thermophilous ruderal vegetation: **2 - optimum**

13E Perennial nitrophilous herbaceous vegetation of mesic sites: **2 - optimum**

13F Herbaceous vegetation of forests clearings and Rubus scrub: **1 - rare occurrence**

Affinity to the forest environment

Affinity to the forest environment in Thermophyticum: **0 - taxon that does not spontaneously occur in Czech forests**

Affinity to the forest environment in Mesophyticum and Oreophyticum: **0 - taxon that does not spontaneously occur in Czech forests**

Distribution and frequency

Floristic zone: **arctic, boreal, northern temperate, southern temperate, submeridional, meridional, subtropical, tropical, austral or antarctic**

Floristic region: **Europe, circumpolar**

Elevational belt in the Czech Republic: **lowlands, colline belt, submontane belt, montane belt, subalpine belt**

Occurrence frequency in the basic grid mapping cells and quadrants of the basic grid mapping cells: 656

taxon.data.freq_in_quad: 2265

Commonness in vegetation plots from the Czech Republic

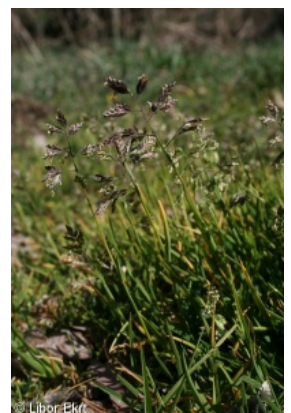
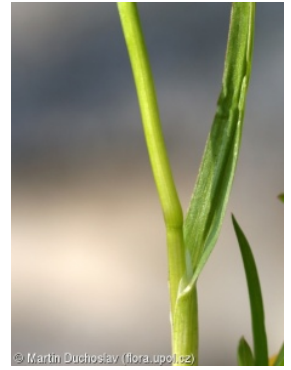
Maximum percentage cover in vegetation plots: **88 %**

Number of habitats with taxon occurrence in the Czech Republic

Number of narrow habitats in which the taxon occurs: **37**

Number of narrow habitats in which the taxon has its optimum: **8**

Number of broad habitats in which the taxon occurs: **12**



Number of broad habitats in which the taxon has its optimum: 3

