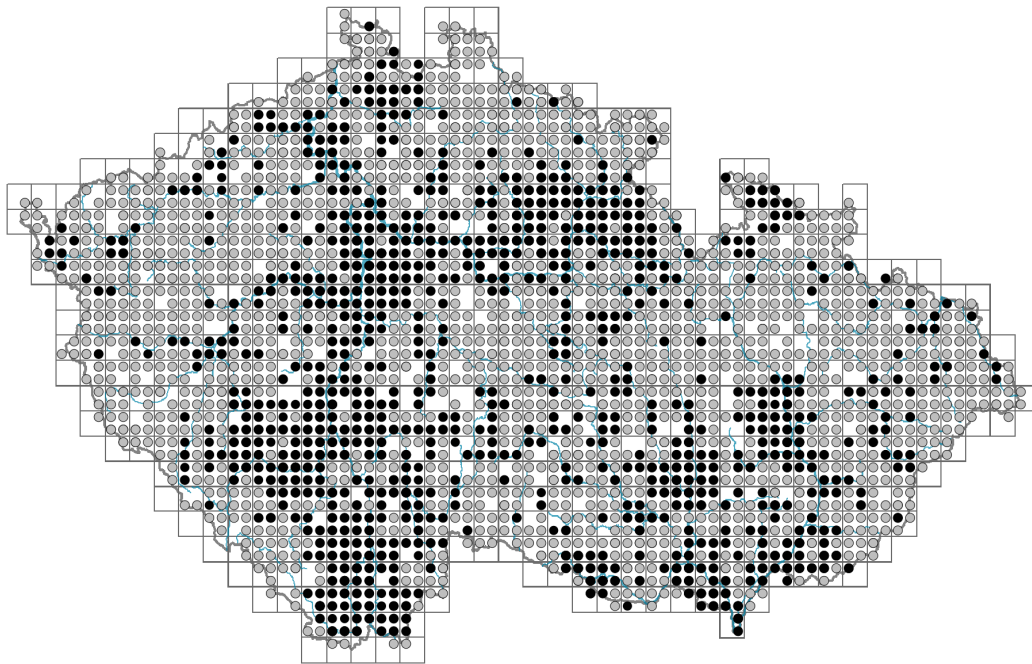


Stellaria media agg.

Distribution



© Petr Václav

Map info

● revised records

○ unrevised records

On the map are not visualized records without the coordinates and records marked as incorrect or doubtful.



© Petr Václav

Habitus and growth type

Height [m]: **0.05-0.8**

Growth form: **annual herb, clonal herb**

Life form: **hemicryptophyte, therophyte**

Life strategy: **CR - competitor/ruderal, CSR - competitor/stress-tolerator/ruderal, R - ruderal**

Leaf

Leaf presence and metamorphosis: **leaves present, not modified**

Leaf arrangement (phyllotaxis): **opposite**

Leaf shape: **simple - entire**

Stipules: **absent**

Petiole: **both present and absent**

Leaf life span: **overwintering green, evergreen**

Leaf anatomy: **hygromorphic, helomorphic**

Flower

Flowering period [month]: **March-November**

Flowering phase: **1 Corylus avellana-Leucojum vernal (pre-spring)**

Flower colour: **white, green**

Flower symmetry: **actinomorphic**



© Dana Michalčová



© Alena Lepší

Perianth type: **calyx and corolla, calyx and corolla, corolla reduced or absent, calyx and corolla, corolla sometimes absent**

Perianth fusion: **free, reduced**

Calyx fusion: **aposepalous**

Inflorescence type: **dichasium**

Dicliny: **synoecious**

Generative reproduction type: **autogamy, facultative autogamy**

Pollination syndrome: **insect-pollination, selfing, cleistogamy**

Pollinator spectrum: **bumblebees, solitary bees, other Hymenoptera, hoverflies, flies s. l., meat flies s. l., other Diptera, nitidulids, thrips, other pollinators**

Fruit, seed and dispersal

Fruit type: **dry fruit - capsule**

Fruit colour: **brown**

Reproduction type: **mostly by seed/spores, rarely vegetatively, only by seed/spores**

Dispersal unit (diaspore): **seed**

Dispersal strategy: **Allium (mainly autochory)**

Myrmecochory: **non-myrmecochorous (a)**

Belowground organs and clonality

Shoot metamorphosis: **stolon**

Storage organ: **stolon**

Type of clonal growth organ: **stolon**

Freely dispersible organs of clonal growth: **absent**

Shoot life span (cyclicality): **monocyclic shoots prevailing**

Branching type of stem-derived organs of clonal growth: **sympodial**

Primary root: **present**

Persistence of the clonal growth organ [year]: **1.5**

Number of clonal offspring: **3.5**

Lateral spreading distance by clonal growth [m]: **0.13**

Bud bank

Number of buds per shoot at the soil surface (root buds excluded): **8**

Number of buds per shoot at a depth of 0–10 cm (root buds excluded): **0**

Number of buds per shoot at a depth greater than 10 cm (root buds excluded): **0**

Size of the belowground bud bank (root buds excluded): **8**

Depth of the belowground bud bank (root buds excluded) [cm]: **1**

Number of buds per shoot at the soil surface (root buds included): **8**

Number of buds per shoot at a depth of 0–10 cm (root buds included): **0**

Number of buds per shoot at a depth greater than 10 cm (root buds included): **0**

Size of the belowground bud bank (root buds included): **8**

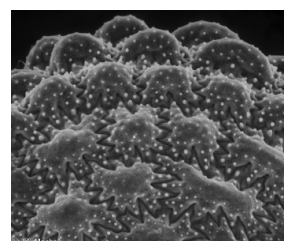
Depth of the belowground bud bank (root buds included) [cm]: **1**

Trophic mode

Parasitism and mycoheterotrophy: **autotrophic**

Carnivory: **non-carnivorous**

Symbiotic nitrogen fixation: **no nitrogen-fixing symbionts**



Karyology

Chromosome number (2n): **20, 40**

Ploidy level (x): **2, 4**

2C genome size [Mbp]: **1357.97**

1Cx monoploid genome size [Mbp]: **445.68**

Taxon origin

Origin in the Czech Republic: **native**

Ecological indicator values

Ellenberg-type indicator values

Light indicator value: **6 - transition between values 5 and 7; rarely at less than 20% of diffuse radiation incident in an open area**

Temperature indicator value: **5x - moderate heat indicator, occurring from lowland to montane belt, mainly in submontane-temperate areas (generalist)**

Moisture indicator value: **5x - indicator of fresh soils, focus on soils of average moisture, missing on wet and on soils that frequently dry out (generalist)**

Reaction indicator value: **6 - transition between values 5 and 7**

Nutrient indicator value: **8 - pronounced nutrient indicator**

Salinity indicator value: **1 - salt tolerant, mostly on low-salt to salt-free soils, but occasionally on slightly salty soils**

Indicator values for disturbance

Whole-community disturbance frequency indicator value: **-0.88**

Herb layer disturbance frequency indicator value: **-0.26**

Whole-community disturbance severity indicator value: **0.86**

Herb layer disturbance severity indicator value: **0.85**

Whole-community structure based disturbance indicator value: **0.55**

Herb layer structure-based disturbance indicator value: **0.56**

Habitat and sociology

Occurrence in habitats

1 Vegetation of cliffs, screes and walls

1A Calcareous cliffs: **1 - rare occurrence**

1C Walls: **1 - rare occurrence**

3 Aquatic vegetation

3C Macrophytic vegetation of oligotrophic lakes and pools: **1 - rare occurrence**

4 Wetland and riverine herbaceous vegetation

4D Riverine reed vegetation: **1 - rare occurrence**

4E Reed vegetation of brooks: **1 - rare occurrence**

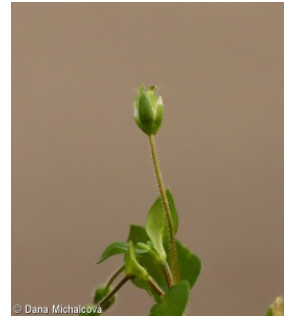
4H Vegetation of low annual hygrophilous herbs: **1 - rare occurrence**

4I Vegetation of nitrophilous annual hygrophilous herbs: **1 - rare occurrence**

4J River gravel banks: **1 - rare occurrence**

4K Petasites fringes of montane brooks: **1 - rare occurrence**

4L Nitrophilous herbaceous fringes of lowland rivers: **1 - rare occurrence**



5 Vegetation of springs and mires

5B Lowland to montane soft-water springs: **1 - rare occurrence**

6 Meadows and mesic pastures

6A Mesic Arrhenatherum meadows: **1 - rare occurrence**

6C Pastures and park grasslands: **2 - optimum**

6D Alluvial meadows of lowland rivers: **1 - rare occurrence**

6G Vegetation of wet disturbed soils: **1 - rare occurrence**

8 Dry grasslands

8C Narrow-leaved sub-continental steppes: **1 - rare occurrence**

8E Acidophilous dry grasslands: **1 - rare occurrence**

8F Thermophilous forest fringe vegetation: **1 - rare occurrence**

9 Sand grasslands and rock-outcrop vegetation

9B Open vegetation of acidic sands: **1 - rare occurrence**

9C Festuca grasslands on acidic sands: **1 - rare occurrence**

9D Pannonian sand steppes: **1 - rare occurrence**

9E Acidophilous vegetation of spring therophytes and succulents: **1 - rare occurrence**

9F Basiphilous vegetation of spring therophytes and succulents: **1 - rare occurrence**

10 Saline vegetation

10I Inland saline meadows: **1 - rare occurrence**

11 Heathlands and scrub

11H Subalpine deciduous scrub: **1 - rare occurrence**

11I Willow carrs: **1 - rare occurrence**

11J Willow galleries of loamy and sandy river banks: **1 - rare occurrence**

11L Tall mesic and xeric shrub: **1 - rare occurrence**

11N Low xeric scrub: **1 - rare occurrence**

11R Scrub and pioneer woodland of forests clearings: **1 - rare occurrence**

12 Forests

12A Alder carrs: **1 - rare occurrence**

12B Alluvial forests: **2 - optimum**

12C Oak-hornbeam forests: **1 - rare occurrence**

12D Ravine forests: **2 - optimum**

12E Herb-rich beech forests: **1 - rare occurrence**

12F Limestone beech forests: **1 - rare occurrence**

12G Acidophilous beech forests: **1 - rare occurrence**

12H Peri-Alpidic basiphilous thermophilous oak forests: **1 - rare occurrence**

12I Sub-continental thermophilous oak forests: **1 - rare occurrence**

12J Acidophilous thermophilous oak forests: **1 - rare occurrence**

12K Acidophilous oak forests: **1 - rare occurrence**

12T Robinia pseudacacia plantations: **1 - rare occurrence**

12U Plantations of broad-leaved non-native trees: **1 - rare occurrence**

12V Spruce plantations: **1 - rare occurrence**

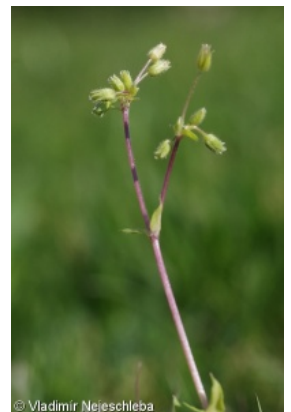
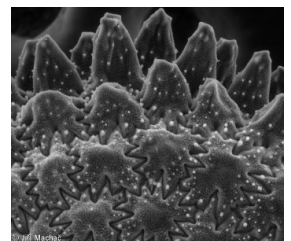
12W Pine and larch plantations: **1 - rare occurrence**

13 Anthropogenic vegetation

13A Annual vegetation of ruderal habitats: **4 - constant dominant**

13B Annual vegetation of arable land: **4 - constant dominant**

13C Annual vegetation of trampled habitats: **2 - optimum**



13D Perennial thermophilous ruderal vegetation: **1 - rare occurrence**

13E Perennial nitrophilous herbaceous vegetation of mesic sites: **2 - optimum**

13F Herbaceous vegetation of forests clearings and Rubus scrub: **1 - rare occurrence**

Ecological specialization indices

Ecological specialization index for all vegetation types: **4.5**

Ecological specialization index for non-forest vegetation: **5.1**

Ecological specialization index for forest vegetation: **4.5**

Distribution and frequency

Floristic zone: **arctic, boreal, northern temperate, southern temperate, submeridional, meridional, subtropical, tropical, austral or antarctic**

Floristic region: **Europe, circumpolar**

Elevational belt in the Czech Republic: **lowlands, colline belt, submontane belt**

Occurrence frequency in the basic grid mapping cells and quadrants of the basic grid mapping cells: 657

taxon.data.freq_in_quad: 2312

Commonness in vegetation plots from the Czech Republic

Occurrence frequency in vegetation plots: **6.4 %**

Occurrence frequency in vegetation plots with a cover above 5%: **19.4 %**

Occurrence frequency in vegetation plots with a cover above 25%: **3.7 %**

Occurrence frequency in vegetation plots with a cover above 50%: **0.8 %**

Mean percentage cover in vegetation plots: **5.7 %**

Maximum percentage cover in vegetation plots: **88 %**

Number of habitats with taxon occurrence in the Czech Republic

Number of narrow habitats in which the taxon occurs: **51**

Number of narrow habitats in which the taxon has its optimum: **7**

Number of broad habitats in which the taxon occurs: **11**

Number of broad habitats in which the taxon has its optimum: **3**

