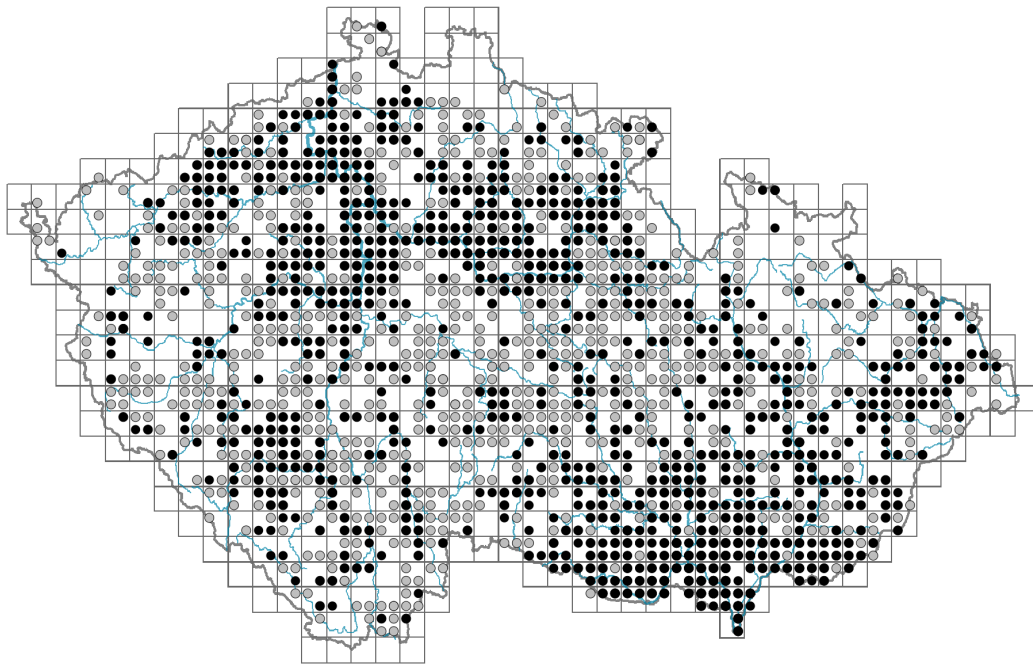


Veronica anagallis-aquatica agg.

Distribution



© Aleš Zvára

Map info

● revised records

○ unrevised records

On the map are not visualized records without the coordinates and records marked as incorrect or doubtful.



© Veronika Kádárová



© Jindřich Štěpánek



© Dana Michalčová

Habitus and growth type

Height [m]: **0.05-0.7**

Growth form: **annual herb**

Life form: **hemicryptophyte, hydrophyte, therophyte**

Life strategy: **CS - competitor/stress-tolerator, CSR - competitor/stress-tolerator/ruderal, SR - stress-tolerator/ruderal**

Leaf

Leaf presence and metamorphosis: **leaves present, not modified**

Leaf arrangement (phyllotaxis): **opposite**

Leaf shape: **simple - entire**

Stipules: **absent**

Petiole: **mainly present, both present and absent, mainly absent, absent**

Leaf life span: **summer green, evergreen**

Leaf anatomy: **helomorphic**

Flower

Flowering period [month]: **May-September**

Flowering phase: **7 Ligustrum vulgare-Stachys sylvatica (end of early summer)**

Flower colour: **white, pink, pink-violet, blue, blue-violet**

Flower symmetry: **zygomorphic**

Perianth type: **calyx and corolla**

Perianth fusion: **fused**

Shape of the sympetalous corolla or syntepalous perianth: **rotate**

Calyx fusion: **fused at the base**

Inflorescence type: **racemus**

Dicliny: **synoecious**

Generative reproduction type: **autogamy, facultative autogamy**

Pollination syndrome: **insect-pollination, selfing**

Fruit, seed and dispersal

Fruit type: **dry fruit - capsule**

Fruit colour: **brown**

Reproduction type: **by seed/spores and vegetatively, only by seed/spores**

Dispersal unit (diaspore): **seed, shoot fragment**

Dispersal strategy: **Sparganium (mainly autochory and hydrochory)**

Myrmecochory: **non-myrmecochorous (a)**

Belowground organs and clonality

Shoot metamorphosis: **stolon, rhizome**

Storage organ: **stolon, rhizome**

Shoot life span (cyclicality): **monocyclic shoots prevailing**

Primary root: **present**

Bud bank

Number of buds per shoot at the soil surface (root buds excluded): **5**

Number of buds per shoot at a depth of 0–10 cm (root buds excluded): **0**

Number of buds per shoot at a depth greater than 10 cm (root buds excluded): **0**

Size of the belowground bud bank (root buds excluded): **5**

Depth of the belowground bud bank (root buds excluded) [cm]: **1**

Number of buds per shoot at the soil surface (root buds included): **5**

Number of buds per shoot at a depth of 0–10 cm (root buds included): **0**

Number of buds per shoot at a depth greater than 10 cm (root buds included): **0**

Size of the belowground bud bank (root buds included): **5**

Depth of the belowground bud bank (root buds included) [cm]: **1**

Trophic mode

Parasitism and mycoheterotrophy: **autotrophic**

Carnivory: **non-carnivorous**

Symbiotic nitrogen fixation: **no nitrogen-fixing symbionts**

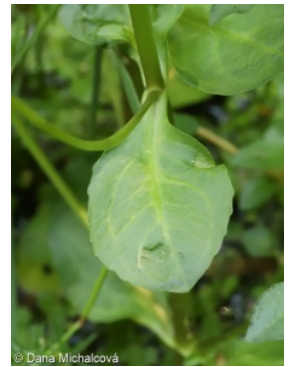
Karyology

Chromosome number (2n): **18, 36**

Ploidy level (x): **2, 4**

2C genome size [Mbp]: **1683.6**

1Cx monoploid genome size [Mbp]: **507.64**



Taxon origin

Origin in the Czech Republic: **native**

Ecological indicator values

Ellenberg-type indicator values

Light indicator value: **7 - half-light plant, mostly occurring at full light, but also in the shade up to about 30% of diffuse radiation incident in an open area**

Temperature indicator value: **6 - transition between values 5 and 7**

Moisture indicator value: **9 - wetness indicator, focus on often soaked, poorly aerated soils**

Reaction indicator value: **7x - indicator of slightly acidic to slightly basic conditions, never occurring in very acidic conditions (generalist)**

Nutrient indicator value: **7 - occurring at nutrient-rich sites more often than at average sites and only exceptionally at poor sites**

Salinity indicator value: **2 - oligohaline, often on soils with very low salt content**

Habitat and sociology

Occurrence in habitats

3 Aquatic vegetation

3B Macrophytic vegetation of water streams: **1 - rare occurrence**

3C Macrophytic vegetation of oligotrophic lakes and pools: **1 - rare occurrence**

4 Wetland and riverine herbaceous vegetation

4A Reed-beds of eutrophic still waters: **1 - rare occurrence**

4B Halophilous reed and sedge beds: **2 - optimum**

4C Eutrophic vegetation of muddy substrata: **1 - rare occurrence**

4D Riverine reed vegetation: **1 - rare occurrence**

4E Reed vegetation of brooks: **2 - optimum**

4G Tall-sedge beds: **1 - rare occurrence**

4H Vegetation of low annual hygrophilous herbs: **2 - optimum**

4I Vegetation of nitrophilous annual hygrophilous herbs: **2 - optimum**

4J River gravel banks: **1 - rare occurrence**

4K Petasites fringes of montane brooks: **1 - rare occurrence**

5 Vegetation of springs and mires

5A Hard-water springs with tufa formation: **2 - optimum**

5B Lowland to montane soft-water springs: **1 - rare occurrence**

5D Calcareous fens: **1 - rare occurrence**

5E Acidic moss-rich fens and peatland meadows: **1 - rare occurrence**

6 Meadows and mesic pastures

6G Vegetation of wet disturbed soils: **1 - rare occurrence**

10 Saline vegetation

10G Continental vegetation of annual halophilous grasses: **1 - rare occurrence**

10I Inland saline meadows: **1 - rare occurrence**

11 Heathlands and scrub

11I Willow carrs: **1 - rare occurrence**

11J Willow galleries of loamy and sandy river banks: **1 - rare occurrence**



12 Forests

12A Alder carrs: **1 - rare occurrence**

12B Alluvial forests: **1 - rare occurrence**

Affinity to the forest environment

Affinity to the forest environment in Thermophyticum: **0 - taxon that does not spontaneously occur in Czech forests**

Affinity to the forest environment in Mesophyticum and Oreophyticum: **0 - taxon that does not spontaneously occur in Czech forests**

Distribution and frequency

Floristic zone: **boreal, northern temperate, southern temperate, submeridional, meridional, austral or antarctic**

Floristic region: **Europe, Asia, Western Asia, Africa, Americas, Australia, New Zealand**

Elevational belt in the Czech Republic: **lowlands, colline belt, submontane belt**

Occurrence frequency in the basic grid mapping cells and quadrants of the basic grid mapping cells: 564

taxon.data.freq_in_quad: 1516

Commonness in vegetation plots from the Czech Republic

Maximum percentage cover in vegetation plots: **88 %**

Number of habitats with taxon occurrence in the Czech Republic

Number of narrow habitats in which the taxon occurs: **23**

Number of narrow habitats in which the taxon has its optimum: **5**

Number of broad habitats in which the taxon occurs: **7**

Number of broad habitats in which the taxon has its optimum: **2**

