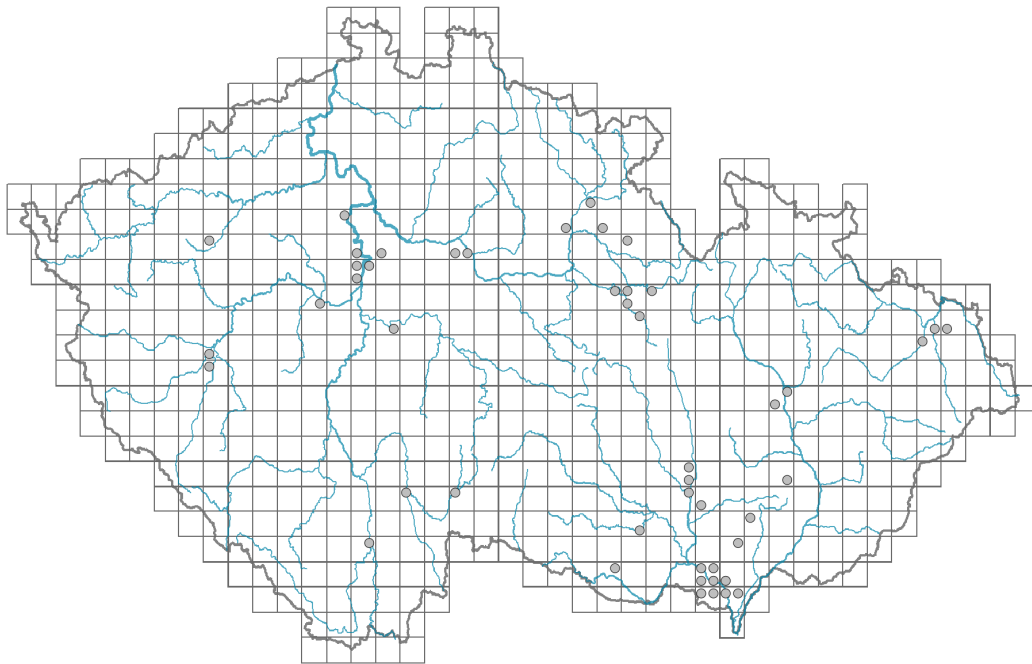


Amaranthus blitoides

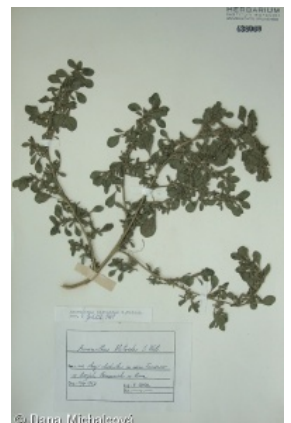
Distribution



Map info

- revised records
- unrevised records

On the map are not visualized records without the coordinates and records marked as incorrect or doubtful.



Habitus and growth type

Height [m]: **0.1-0.6**

Growth form: **annual herb**

Life form: **therophyte**

Life strategy: **CR - competitor/ruderal**

Leaf

Leaf presence and metamorphosis: **leaves present, not modified**

Leaf arrangement (phyllotaxis): **alternate**

Leaf shape: **simple - entire**

Stipules: **absent**

Petiole: **present**

Leaf life span: **summer green**

Leaf anatomy: **mesomorphic**

Flower

Flowering period [month]: **July-September**

Flower colour: **green**

Flower symmetry: **actinomorphic**

Perianth type: **homochlamydeous**

Perianth fusion: **free**

Inflorescence type: **pseudospica**
 Dicliny: **monoecious**
 Generative reproduction type: **facultative autogamy**
 Pollination syndrome: **wind-pollination, selfing**

Fruit, seed and dispersal

Fruit type: **dry fruit - capsule**
 Fruit colour: **brown**
 Reproduction type: **only by seed/spores**
 Dispersal unit (diaspore): **seed**
 Dispersal strategy: **Allium (mainly autochory)**
 Myrmecochory: **non-myrmecochorous (b)**

Belowground organs and clonality

Shoot life span (cyclicality): **monocyclic shoots prevailing**
 Primary root: **present**

Bud bank

Number of buds per shoot at the soil surface (root buds excluded): **5**
 Number of buds per shoot at a depth of 0–10 cm (root buds excluded): **0**
 Number of buds per shoot at a depth greater than 10 cm (root buds excluded): **0**
 Size of the belowground bud bank (root buds excluded): **5**
 Depth of the belowground bud bank (root buds excluded) [cm]: **1**
 Number of buds per shoot at the soil surface (root buds included): **5**
 Number of buds per shoot at a depth of 0–10 cm (root buds included): **0**
 Number of buds per shoot at a depth greater than 10 cm (root buds included): **0**
 Size of the belowground bud bank (root buds included): **5**
 Depth of the belowground bud bank (root buds included) [cm]: **1**

Trophic mode

Parasitism and mycoheterotrophy: **autotrophic**
 Carnivory: **non-carnivorous**
 Symbiotic nitrogen fixation: **no nitrogen-fixing symbionts**

Karyology

Chromosome number (2n): **32**
 Ploidy level (x): **2**
 2C genome size [Mbp]: **917.99**
 1Cx monoploid genome size [Mbp]: **458.99**
 Genomic GC content: **35.8 %**

Taxon origin

Origin in the Czech Republic: **neophyte**
 Invasion status: **naturalized**
 Geographic origin: **North America**



Year of the first record in the wild: **1931**

Period of introduction: **Late Modern Period (1800-1950)**

Introduction pathway: **unintentional - traffic, unintentional - industry, unintentional - anthropogenic**

Ecological indicator values

Ellenberg-type indicator values

Light indicator value: **9 - full light plant, occurring only in fully irradiated places, not at less than 50% of diffuse radiation incident in an open area**

Temperature indicator value: **8 - transition between values 7 and 9**

Moisture indicator value: **3 - missing on damp soil**

Reaction indicator value: **7x - indicator of slightly acidic to slightly basic conditions, never occurring in very acidic conditions (generalist)**

Nutrient indicator value: **7 - occurring at nutrient-rich sites more often than at average sites and only exceptionally at poor sites**

Salinity indicator value: **1 - salt tolerant, mostly on low-salt to salt-free soils, but occasionally on slightly salty soils**

Habitat and sociology

Occurrence in habitats

4 Wetland and riverine herbaceous vegetation

4I Vegetation of nitrophilous annual hygrophilous herbs: **1 - rare occurrence**

13 Anthropogenic vegetation

13A Annual vegetation of ruderal habitats: **2 - optimum**

13B Annual vegetation of arable land: **1 - rare occurrence**

13C Annual vegetation of trampled habitats: **2 - optimum**

13D Perennial thermophilous ruderal vegetation: **1 - rare occurrence**

Affinity to the forest environment

Affinity to the forest environment in Thermophyticum: **0 - taxon that does not spontaneously occur in Czech forests**

Affinity to the forest environment in Mesophyticum and Oreophyticum: **0 - taxon that does not spontaneously occur in Czech forests**

Distribution and frequency

Floristic zone: **southern temperate, submeridional, meridional**

Floristic region: **Western America**

Continentality degree: **6**

Distribution range extension along the continentality gradient: **6**

Elevational belt in the Czech Republic: **lowlands, colline belt**

Occurrence frequency in the basic grid mapping cells and quadrants of the basic grid mapping cells: **37**

taxon.data.freq_in_quad: **48**

Commonness in vegetation plots from the Czech Republic

Occurrence frequency in vegetation plots: **0 %**

Occurrence frequency in vegetation plots with a cover above 5%: **0 %**

Occurrence frequency in vegetation plots with a cover above 25%: **0 %**

Occurrence frequency in vegetation plots with a cover above 50%: **0 %**

Mean percentage cover in vegetation plots: **2 %**

Maximum percentage cover in vegetation plots: **2 %**

Number of habitats with taxon occurrence in the Czech Republic

Number of narrow habitats in which the taxon occurs: **5**

Number of narrow habitats in which the taxon has its optimum: **2**

Number of broad habitats in which the taxon occurs: **2**

Number of broad habitats in which the taxon has its optimum: **1**

Threats and protection

Red List 2017 (national categories): **taxon is not on the Red List**

Red List 2017 (IUCN categories): **LC(NA) - least concern (taxon is not on the Red List)**

Legal protection: **not protected by law**