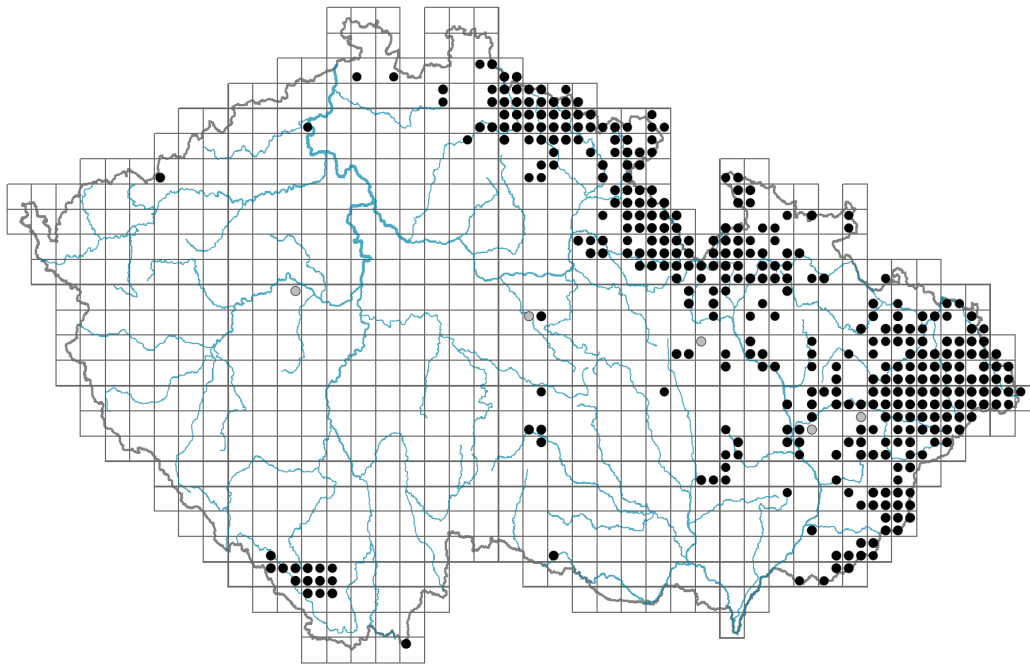


Anthriscus nitidus

Distribution



© Dana Michalcová

Map info

● revised records

○ unrevised records

On the map are not visualized records without the coordinates and records marked as incorrect or doubtful.



© Vera Fajnar

Habitus and growth type

Height [m]: **0.6-1**

Growth form: **polycarpic perennial non-clonal herb**

Life form: **hemicryptophyte**

Life strategy: **C - competitor**

Life strategy (Pierce method based on leaf traits): **C/CSR**

Life strategy (Pierce method, C-score): **60.4 %**

Life strategy (Pierce method, S-score): **14.5 %**

Life strategy (Pierce method, R-score): **25.1 %**

Leaf

Leaf presence and metamorphosis: **leaves present, not modified**

Leaf arrangement (phyllotaxis): **alternate**

Leaf shape: **compound - bipinnate, compound - tripinnate**

Stipules: **absent**

Petiole: **present**

Leaf life span: **summer green**

Leaf anatomy: **hygromorphic**

Flower

Flowering period [month]: **June-August**



© Dana Michalcová



© Dana Michalcová

Flowering phase: **5 Sorbus aucuparia-Galium odoratum (end of mid-spring)**

Flower colour: **white**

Flower symmetry: **actinomorphic, zygomorphic**

Perianth type: **calyx absent, corolla present**

Perianth fusion: **free**

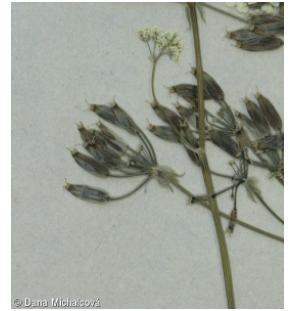
Inflorescence type: **umbella composita**

Dicliny: **andromonoecious**

Generative reproduction type: **facultative allogamy**

Pollination syndrome: **insect-pollination**

Pollinator spectrum: **hoverflies, flies s. l. (meat flies s. l., other Diptera)**



Fruit, seed and dispersal

Fruit type: **dry fruit - cremocarp**

Fruit colour: **brown**

Reproduction type: **by seed/spores and vegetatively**

Dispersal unit (diaspore): **fruit, infructescence or its part**

Dispersal strategy: **Allium (mainly autochory)**

Myrmecochory: **non-myrmecochorous (b)**



Belowground organs and clonality

Shoot metamorphosis: **rhizome**

Storage organ: **rhizome**

Shoot life span (cyclicality): **dicyclic or polycyclic shoots prevailing**

Branching type of stem-derived organs of clonal growth: **sympodial**

Primary root: **present**

Position of root buds: **primary root**

Role of root buds in life-history of a plant: **regenerative**

Bud bank

Number of buds per shoot at the soil surface (root buds excluded): **5**

Number of buds per shoot at a depth of 0–10 cm (root buds excluded): **15**

Number of buds per shoot at a depth greater than 10 cm (root buds excluded): **0**

Size of the belowground bud bank (root buds excluded): **20**

Depth of the belowground bud bank (root buds excluded) [cm]: **4**

Number of buds per shoot at the soil surface (root buds included): **5**

Number of buds per shoot at a depth of 0–10 cm (root buds included): **15**

Number of buds per shoot at a depth greater than 10 cm (root buds included): **0**

Size of the belowground bud bank (root buds included): **20**

Depth of the belowground bud bank (root buds included) [cm]: **4**

Trophic mode

Parasitism and mycoheterotrophy: **autotrophic**

Carnivory: **non-carnivorous**

Symbiotic nitrogen fixation: **no nitrogen-fixing symbionts**

Karyology

Chromosome number (2n): **16**

Ploidy level (x): **2**

2C genome size [Mbp]: **3688.64**

1Cx monoploid genome size [Mbp]: **1844.32**

Genomic GC content: **38.1 %**

Taxon origin

Origin in the Czech Republic: **native**

Ecological indicator values

Ellenberg-type indicator values

Light indicator value: **4 - transition between values 3 and 5**

Temperature indicator value: **4 - transition between values 3 and 5**

Moisture indicator value: **6 - transition between values 5 and 7**

Reaction indicator value: **7 - indicator of slightly acidic to slightly basic conditions, never occurring in very acidic conditions**

Nutrient indicator value: **8 - pronounced nutrient indicator**

Salinity indicator value: **0 - not salt tolerant, glycophyte**

Indicator values for disturbance

Whole-community disturbance frequency indicator value: **-1.74**

Herb layer disturbance frequency indicator value: **-0.62**

Whole-community disturbance severity indicator value: **0.34**

Herb layer disturbance severity indicator value: **0.25**

Whole-community structure based disturbance indicator value: **0.2**

Herb layer structure-based disturbance indicator value: **0.23**

Habitat and sociology

Occurrence in habitats

2 Alpine and subalpine grasslands

2B Subalpine tall-forb and tall-grass vegetation: **1 - rare occurrence**

4 Wetland and riverine herbaceous vegetation

4D Riverine reed vegetation: **1 - rare occurrence**

4J River gravel banks: **1 - rare occurrence**

4K Petasites fringes of montane brooks: **2 - optimum**

6 Meadows and mesic pastures

6B Montane mesic meadows: **1 - rare occurrence**

11 Heathlands and scrub

11J Willow galleries of loamy and sandy river banks: **1 - rare occurrence**

11L Tall mesic and xeric shrub: **1 - rare occurrence**

11R Scrub and pioneer woodland of forests clearings: **1 - rare occurrence**

12 Forests

12A Alder carrs: **1 - rare occurrence**

12B Alluvial forests: **2 - optimum**

12C Oak-hornbeam forests: **1 - rare occurrence**

12D Ravine forests: **2 - optimum**

12E Herb-rich beech forests: **1 - rare occurrence**

12S Basiphilous spruce forests: **1 - rare occurrence**

12U Plantations of broad-leaved non-native trees: **1 - rare occurrence**

12V Spruce plantations: **1 - rare occurrence**

13 Anthropogenic vegetation

13E Perennial nitrophilous herbaceous vegetation of mesic sites: **2 - optimum**

13F Herbaceous vegetation of forests clearings and Rubus scrub: **1 - rare occurrence**

Affinity to the forest environment

Affinity to the forest environment in Mesophyticum and Oreophyticum: **1.2 - taxon occurring mainly along forest edges and in forest openings, including forest roads and paths, windthrow sites, burnt sites and forest clearings**

Diagnostic taxon

Diagnostic taxon of associations: [XDE06 Anthrisco nitidae-Aegopodietum podagrariae](#)

Constant taxon

Constant taxon of associations: [XDE06 Anthrisco nitidae-Aegopodietum podagrariae](#)

Dominant taxon

Dominant taxon of associations: [XDE06 Anthrisco nitidae-Aegopodietum podagrariae](#)

Ecological specialization indices

Ecological specialization index for all vegetation types: **5.3**

Ecological specialization index for non-forest vegetation: **4.9**

Ecological specialization index for forest vegetation: **6.1**

Colonization ability

Index of colonization success (ICS): **1**

Index of colonization potential (ICP): **1**

Distribution and frequency

Floristic zone: **northern temperate, southern temperate, submeridional**

Floristic region: **Europe**

Continental degree: **4**

Distribution range extension along the continentality gradient: **2**

Elevational belt in the Czech Republic: **colline belt, submontane belt, montane belt**

Occurrence frequency in the basic grid mapping cells and quadrants of the basic grid mapping cells: **183**

taxon.data.freq_in_quad: **396**

Commonness in vegetation plots from the Czech Republic

Occurrence frequency in vegetation plots: **0.4 %**

Occurrence frequency in vegetation plots with a cover above 5%: **27 %**

Occurrence frequency in vegetation plots with a cover above 25%: **17.5 %**

Occurrence frequency in vegetation plots with a cover above 50%: **11.9 %**

Mean percentage cover in vegetation plots: **13.6 %**

Maximum percentage cover in vegetation plots: **88 %**

Number of habitats with taxon occurrence in the Czech Republic

Number of narrow habitats in which the taxon occurs: **18**

Number of narrow habitats in which the taxon has its optimum: **4**

Number of broad habitats in which the taxon occurs: **6**

Number of broad habitats in which the taxon has its optimum: **3**

Threats and protection

Red List 2017 (national categories): **taxon is not on the Red List**

Red List 2017 (IUCN categories): **LC(NA) - least concern (taxon is not on the Red List)**

Legal protection: **not protected by law**