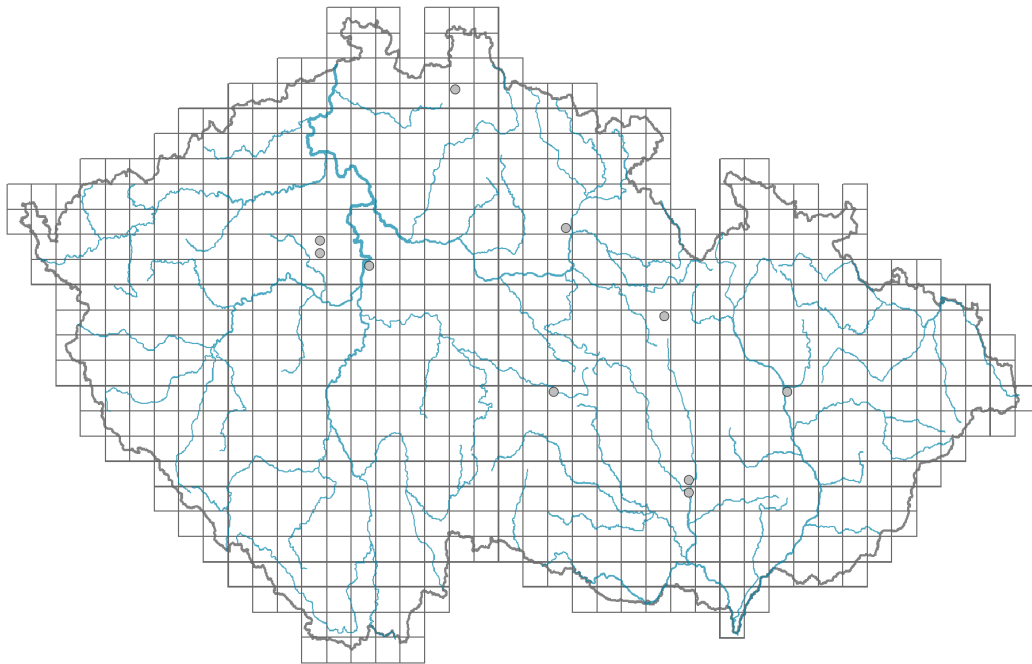


Artemisia siversiana

Distribution



© Dana Michalová

Map info

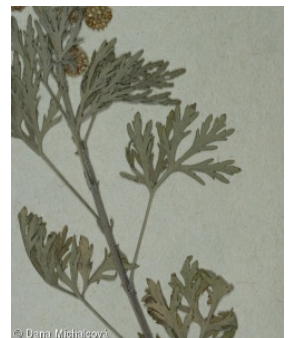
● revised records

○ unrevised records

On the map are not visualized records without the coordinates and records marked as incorrect or doubtful.



© Dana Michalová



© Dana Michalová

Habitus and growth type

Height [m]: **0.3-1**

Growth form: **annual herb**

Life form: **therophyte**

Life strategy: **CR - competitor/ruderal**

Leaf

Leaf presence and metamorphosis: **leaves present, not modified**

Leaf arrangement (phyllotaxis): **alternate**

Leaf shape: **simple - pinnately divided**

Stipules: **absent**

Petiole: **both present and absent**

Leaf life span: **summer green**

Leaf anatomy: **mesomorphic**

Flower

Flowering period [month]: **August-September**

Flower colour: **yellow**

Flower symmetry: **actinomorphic**

Perianth type: **calyx absent, corolla present**

Perianth fusion: **fused**

Shape of the sympetalous corolla or syntepalous perianth: **tubular, filiform**

Inflorescence type: **panicula ex anthodiis composita**

Dicliny: **gynomonoecious**

Pollination syndrome: **wind-pollination**

Fruit, seed and dispersal

Fruit type: **dry fruit - achene/cypsela/samara**

Reproduction type: **only by seed/spores**

Myrmecochory: **probably non-myrmecochorous nv**

Belowground organs and clonality

Shoot life span (cyclicity): **dicyclic or polycyclic shoots prevailing**

Primary root: **present**

Bud bank

Number of buds per shoot at the soil surface (root buds excluded): **5**

Number of buds per shoot at a depth of 0–10 cm (root buds excluded): **3**

Number of buds per shoot at a depth greater than 10 cm (root buds excluded): **0**

Size of the belowground bud bank (root buds excluded): **8**

Depth of the belowground bud bank (root buds excluded) [cm]: **2**

Number of buds per shoot at the soil surface (root buds included): **5**

Number of buds per shoot at a depth of 0–10 cm (root buds included): **3**

Number of buds per shoot at a depth greater than 10 cm (root buds included): **0**

Size of the belowground bud bank (root buds included): **8**

Depth of the belowground bud bank (root buds included) [cm]: **2**

Trophic mode

Parasitism and mycoheterotrophy: **autotrophic**

Carnivory: **non-carnivorous**

Symbiotic nitrogen fixation: **no nitrogen-fixing symbionts**

Taxon origin

Origin in the Czech Republic: **neophyte**

Invasion status: **casual**

Geographic origin: **Europe, Asia**

Year of the first record in the wild: **1953**

Period of introduction: **Recent Past (1950-2000)**

Introduction pathway: **unintentional - traffic, unintentional - industry**

Ecological indicator values

Ellenberg-type indicator values

Light indicator value: **8 - light plant, only exceptionally occurring at less than 40% of diffuse radiation incident in an open area**

Temperature indicator value: **6 - transition between values 5 and 7**

Moisture indicator value: **5 - indicator of fresh soils, focus on soils of average**

moisture, missing on wet and on soils that frequently dry out

Reaction indicator value: **6 - transition between values 5 and 7**

Nutrient indicator value: **6 - transition between values 5 and 7**

Salinity indicator value: **1 - salt tolerant, mostly on low-salt to salt-free soils, but occasionally on slightly salty soils**

Habitat and sociology

Affinity to the forest environment

Affinity to the forest environment in Thermophyticum: **0 - taxon that does not spontaneously occur in Czech forests**

Affinity to the forest environment in Mesophyticum and Oreophyticum: **0 - taxon that does not spontaneously occur in Czech forests**

Distribution and frequency

Floristic zone: **northern temperate, southern temperate, submeridional, meridional**

Floristic region: **Eastern Europe, Asia**

Occurrence frequency in the basic grid mapping cells and quadrants of the basic grid mapping cells: 9

taxon.data.freq_in_quad: 10

Commonness in vegetation plots from the Czech Republic

Occurrence frequency in vegetation plots: **0 %**

Occurrence frequency in vegetation plots with a cover above 5%: **0 %**

Occurrence frequency in vegetation plots with a cover above 25%: **0 %**

Occurrence frequency in vegetation plots with a cover above 50%: **0 %**

Mean percentage cover in vegetation plots: **3 %**

Maximum percentage cover in vegetation plots: **3 %**

Threats and protection

Red List 2017 (national categories): **taxon is not on the Red List**

Red List 2017 (IUCN categories): **LC(NA) - least concern (taxon is not on the Red List)**

Legal protection: **not protected by law**