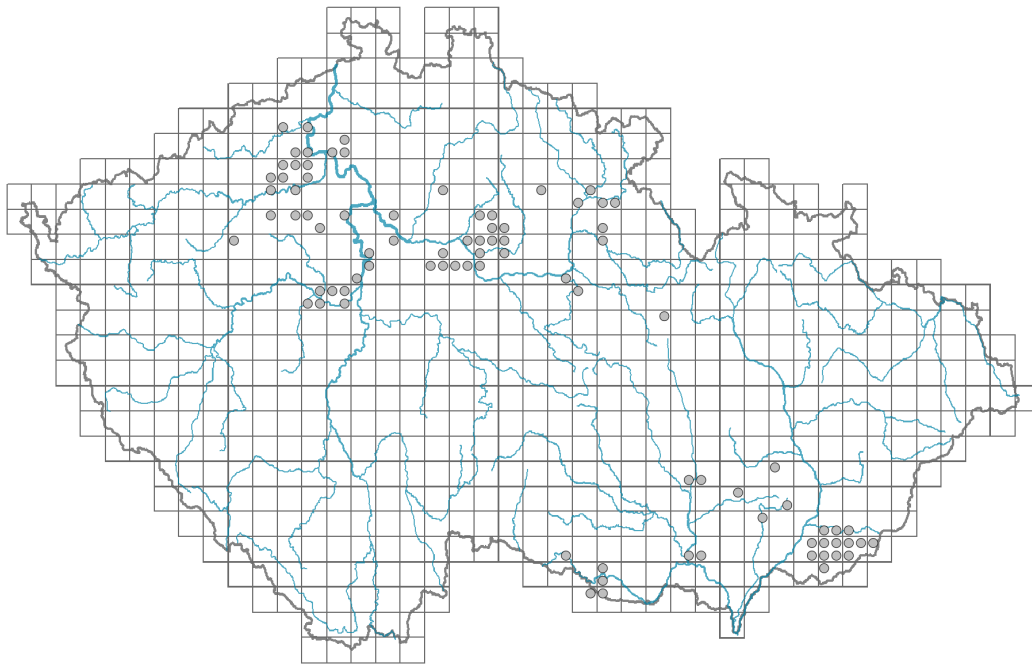


Bifora radians

Distribution



© Vladimír Nejšlechta

Map info

● revised records

○ unrevised records

On the map are not visualized records without the coordinates and records marked as incorrect or doubtful.

Habitus and growth type

Height [m]: **0.2-0.4**

Growth form: **annual herb**

Life form: **therophyte**

Life strategy: **R - ruderal**

Life strategy (Pierce method based on leaf traits): **R/CR**

Life strategy (Pierce method, C-score): **32.9 %**

Life strategy (Pierce method, S-score): **0 %**

Life strategy (Pierce method, R-score): **67.1 %**

Leaf

Leaf presence and metamorphosis: **leaves present, not modified**

Leaf arrangement (phyllotaxis): **alternate**

Leaf shape: **simple - pinnately divided, compound - imparipinnate, compound - bipinnate, compound - tripinnate**

Stipules: **absent**

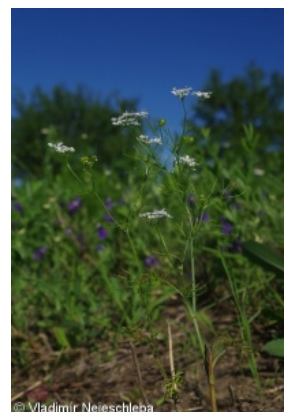
Petiole: **both present and absent**

Leaf life span: **summer green**

Leaf anatomy: **mesomorphic**



© Dana Michalčová



© Vladimír Nejšlechta

Flower

Flowering period [month]: **May-August**

Flowering phase: **8 Clematis vitalba-Galium sylvaticum (mid-summer)**

Flower colour: **white**

Flower symmetry: **actinomorphic, zygomorphic**

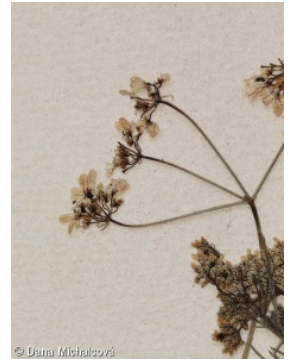
Perianth type: **calyx absent, corolla present**

Perianth fusion: **free**

Inflorescence type: **umbrella composita**

Generative reproduction type: **facultative allogamy**

Pollination syndrome: **insect-pollination, selfing**



Fruit, seed and dispersal

Fruit type: **dry fruit - cremocarp**

Fruit colour: **brown**

Reproduction type: **only by seed/spores**

Dispersal unit (diaspore): **fruit, infrutescence or its part**

Dispersal strategy: **Allium (mainly autochory)**

Myrmecochory: **non-myrmecochorous (b)**



Belowground organs and clonality

Shoot life span (cyclicality): **monocyclic shoots prevailing**

Primary root: **present**

Bud bank

Number of buds per shoot at the soil surface (root buds excluded): **5**

Number of buds per shoot at a depth of 0–10 cm (root buds excluded): **0**

Number of buds per shoot at a depth greater than 10 cm (root buds excluded): **0**

Size of the belowground bud bank (root buds excluded): **5**

Depth of the belowground bud bank (root buds excluded) [cm]: **1**

Number of buds per shoot at the soil surface (root buds included): **5**

Number of buds per shoot at a depth of 0–10 cm (root buds included): **0**

Number of buds per shoot at a depth greater than 10 cm (root buds included): **0**

Size of the belowground bud bank (root buds included): **5**

Depth of the belowground bud bank (root buds included) [cm]: **1**



Trophic mode

Parasitism and mycoheterotrophy: **autotrophic**

Carnivory: **non-carnivorous**

Symbiotic nitrogen fixation: **no nitrogen-fixing symbionts**

Taxon origin

Origin in the Czech Republic: **archaeophyte/neophyte**

Invasion status: **casual**

Geographic origin: **Mediterranean**

Period of introduction: **Late Middle Ages and Early Modern Period (merged)**

category, 1200-1800)

Introduction pathway: **unintentional - agriculture**

Ecological indicator values

Ellenberg-type indicator values

Light indicator value: **8 - light plant, only exceptionally occurring at less than 40% of diffuse radiation incident in an open area**

Temperature indicator value: **7 - heat indicator, occurring in relatively warm lowlands**

Moisture indicator value: **4 - transition between values 3 and 5**

Reaction indicator value: **8 - transition between values 7 and 9, occurring mostly in calcium-rich conditions**

Nutrient indicator value: **6x - transition between values 5 and 7 (generalist)**

Salinity indicator value: **0 - not salt tolerant, glycophyte**

Indicator values for disturbance

Whole-community disturbance frequency indicator value: **-0.11**

Herb layer disturbance frequency indicator value: **-0.11**

Whole-community disturbance severity indicator value: **0.97**

Herb layer disturbance severity indicator value: **0.97**

Whole-community structure based disturbance indicator value: **0.59**

Herb layer structure-based disturbance indicator value: **0.71**

Habitat and sociology

Occurrence in habitats

12 Forests

12T Robinia pseudacacia plantations: **1 - rare occurrence**

13 Anthropogenic vegetation

13A Annual vegetation of ruderal habitats: **1 - rare occurrence**

13B Annual vegetation of arable land: **2 - optimum**

Affinity to the forest environment

Affinity to the forest environment in Thermophyticum: **0 - taxon that does not spontaneously occur in Czech forests**

Affinity to the forest environment in Mesophyticum and Oreophyticum: **0 - taxon that does not spontaneously occur in Czech forests**

Diagnostic taxon

Diagnostic taxon of associations: [***XBA01 Caucalido platycarpi-Conringietum orientalis***](#)

Constant taxon

Constant taxon of associations: [***XBA01 Caucalido platycarpi-Conringietum orientalis***](#)

Ecological specialization indices

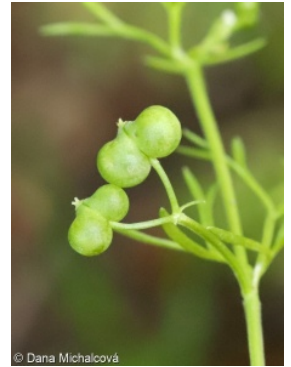
Ecological specialization index for all vegetation types: **6.7**

Ecological specialization index for non-forest vegetation: **6.7**

Colonization ability

Index of colonization success (ICS): **2**

Index of colonization potential (ICP): **7**



Optimum successional age [years]: **4**

Distribution and frequency

Floristic zone: **southern temperate, submeridional, meridional**

Floristic region: **Europe**

Continentality degree: **7**

Distribution range extension along the continentality gradient: **4**

Elevational belt in the Czech Republic: **lowlands, colline belt**

Occurrence frequency in the basic grid mapping cells and quadrants of the basic grid mapping cells: **59**

taxon.data.freq_in_quad: **87**

Commonness in vegetation plots from the Czech Republic

Occurrence frequency in vegetation plots: **0.1 %**

Occurrence frequency in vegetation plots with a cover above 5%: **20 %**

Occurrence frequency in vegetation plots with a cover above 25%: **0 %**

Occurrence frequency in vegetation plots with a cover above 50%: **0 %**

Mean percentage cover in vegetation plots: **5.2 %**

Maximum percentage cover in vegetation plots: **23 %**

Number of habitats with taxon occurrence in the Czech Republic

Number of narrow habitats in which the taxon occurs: **3**

Number of narrow habitats in which the taxon has its optimum: **1**

Number of broad habitats in which the taxon occurs: **2**

Number of broad habitats in which the taxon has its optimum: **1**

Threats and protection

Red List 2017 (national categories): **C1t - critically threatened taxon, declining**

Red List 2017 (IUCN categories): **CR - critically endangered**

Legal protection: **not protected by law**