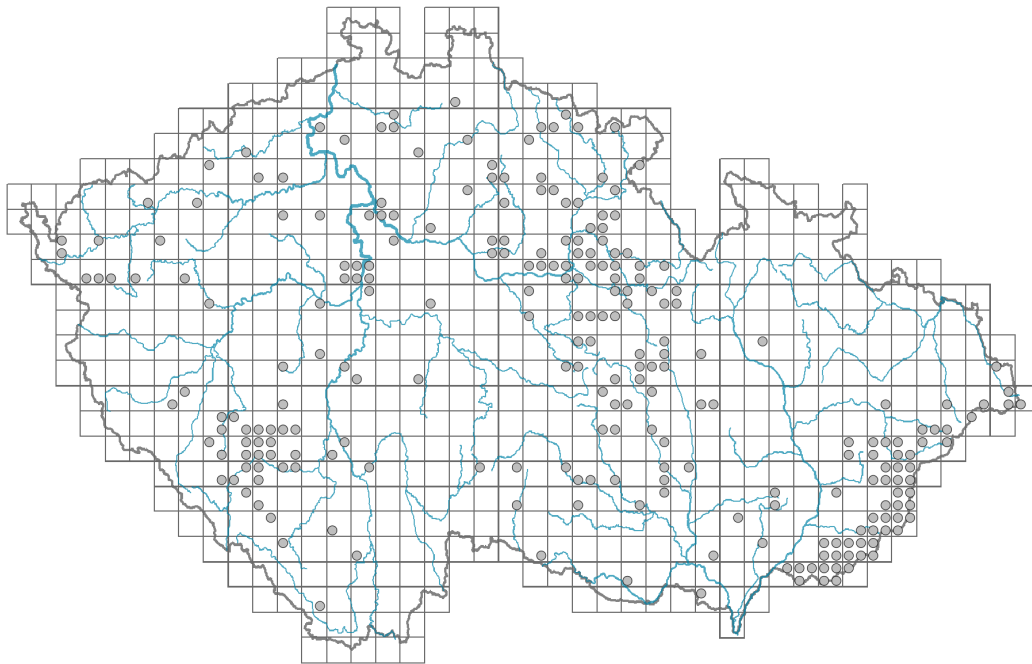


Blysmus compressus

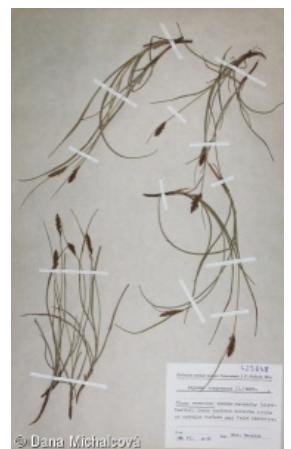
Distribution



Map info

- revised records
- unrevised records

On the map are not visualized records without the coordinates and records marked as incorrect or doubtful.



Habitus and growth type

Height [m]: **0.1-0.4**

Growth form: **clonal herb**

Life form: **geophyte**

Life strategy: **CSR - competitor/stress-tolerator/ruderal**

Life strategy (Pierce method based on leaf traits): **S/SR**

Life strategy (Pierce method, C-score): **13.1 %**

Life strategy (Pierce method, S-score): **65.6 %**

Life strategy (Pierce method, R-score): **21.3 %**

Leaf

Leaf presence and metamorphosis: **leaves present, not modified**

Leaf arrangement (phyllotaxis): **alternate**

Leaf shape: **simple - entire**

Stipules: **absent**

Petiole: **absent**

Leaf life span: **summer green**

Leaf anatomy: **scleromorphic, helomorphic**

Flower

Flowering period [month]: **June-July**

Flowering phase: **8 Clematis vitalba-Galium sylvaticum (mid-summer)**
Flower colour: **brown**
Perianth type: **reduced**
Perianth fusion: **reduced**
Inflorescence type: **spica e spiculis composita**
Dicliny: **synoecious**
Generative reproduction type: **mixed mating**
Pollination syndrome: **wind-pollination**



Fruit, seed and dispersal

Fruit type: **dry fruit - achene/cypsela/samara**
Fruit colour: **brown**
Reproduction type: **by seed/spores and vegetatively**
Dispersal unit (diaspore): **fruit, infrutescence or its part**
Dispersal strategy: **Allium (mainly autochory)**
Myrmecochory: **probably non-myrmecochorous**

Belowground organs and clonality

Shoot metamorphosis: **rhizome**
Storage organ: **rhizome**
Type of clonal growth organ: **hypogeogenous rhizome**
Freely dispersible organs of clonal growth: **absent**
Shoot life span (cyclicality): **dicyclic or polycyclic shoots prevailing**
Branching type of stem-derived organs of clonal growth: **sympodial**
Primary root: **absent**
Persistence of the clonal growth organ [year]: **4**
Number of clonal offspring: **1**
Lateral spreading distance by clonal growth [m]: **0.07**
Clonal index: **4**

Bud bank

Number of buds per shoot at the soil surface (root buds excluded): **5**
Number of buds per shoot at a depth of 0–10 cm (root buds excluded): **15**
Number of buds per shoot at a depth greater than 10 cm (root buds excluded): **0**
Size of the belowground bud bank (root buds excluded): **20**
Depth of the belowground bud bank (root buds excluded) [cm]: **4**
Number of buds per shoot at the soil surface (root buds included): **5**
Number of buds per shoot at a depth of 0–10 cm (root buds included): **15**
Number of buds per shoot at a depth greater than 10 cm (root buds included): **0**
Size of the belowground bud bank (root buds included): **20**
Depth of the belowground bud bank (root buds included) [cm]: **4**

Trophic mode

Parasitism and mycoheterotrophy: **autotrophic**
Carnivory: **non-carnivorous**
Symbiotic nitrogen fixation: **no nitrogen-fixing symbionts**

Karyology

Chromosome number (2n): **44**

Ploidy level (x): **2**

2C genome size [Mbp]: **572.91**

1Cx monoploid genome size [Mbp]: **286.46**

Genomic GC content: **35.4 %**

Taxon origin

Origin in the Czech Republic: **native**

Ecological indicator values

Ellenberg-type indicator values

Light indicator value: **8 - light plant, only exceptionally occurring at less than 40% of diffuse radiation incident in an open area**

Temperature indicator value: **5 - moderate heat indicator, occurring from lowland to montane belt, mainly in submontane-temperate areas**

Moisture indicator value: **8 - transition between values 7 and 9**

Reaction indicator value: **8 - transition between values 7 and 9, occurring mostly in calcium-rich conditions**

Nutrient indicator value: **3 - occurring at nutrient-poor sites more frequently than at average sites and exceptionally at rich sites**

Salinity indicator value: **2 - oligohaline, often on soils with very low salt content**

Habitat and sociology

Occurrence in habitats

5 Vegetation of springs and mires

5D Calcareous fens: **2 - optimum**

6 Meadows and mesic pastures

6G Vegetation of wet disturbed soils: **1 - rare occurrence**

10 Saline vegetation

10I Inland saline meadows: **2 - optimum**

Affinity to the forest environment

Affinity to the forest environment in Thermophyticum: **0 - taxon that does not spontaneously occur in Czech forests**

Affinity to the forest environment in Mesophyticum and Oreophyticum: **0 - taxon that does not spontaneously occur in Czech forests**

Diagnostic taxon

Diagnostic taxon of alliances: [RBA *Caricion davallianae*](#)

Diagnostic taxon of associations: [RBA02 *Carici flavae-Cratoneuretum filicini*](#), [RBA03 *Valeriano simplicifoliae-Caricetum flavae*](#)

Ecological specialization indices

Ecological specialization index for all vegetation types: **6**

Ecological specialization index for non-forest vegetation: **6**

Colonization ability

Index of colonization success (ICS): **1**

Distribution and frequency

Floristic zone: **northern temperate, southern temperate, submeridional, meridional**

Floristic region: **Europe, Western Asia**

Continental degree: **6**

Distribution range extension along the continentality gradient: **5**

Elevational belt in the Czech Republic: **lowlands, colline belt, submontane belt**

Occurrence frequency in the basic grid mapping cells and quadrants of the basic grid mapping cells: **165**

taxon.data.freq_in_quad: **251**

Commonness in vegetation plots from the Czech Republic

Occurrence frequency in vegetation plots: **0.1 %**

Occurrence frequency in vegetation plots with a cover above 5%: **31.3 %**

Occurrence frequency in vegetation plots with a cover above 25%: **6.3 %**

Occurrence frequency in vegetation plots with a cover above 50%: **0 %**

Mean percentage cover in vegetation plots: **6.5 %**

Maximum percentage cover in vegetation plots: **38 %**

Number of habitats with taxon occurrence in the Czech Republic

Number of narrow habitats in which the taxon occurs: **3**

Number of narrow habitats in which the taxon has its optimum: **2**

Number of broad habitats in which the taxon occurs: **3**

Number of broad habitats in which the taxon has its optimum: **2**

Threats and protection

Red List 2017 (national categories): **C2t - endangered taxon, declining**

Red List 2017 (IUCN categories): **EN - endangered**

Legal protection: **not protected by law**