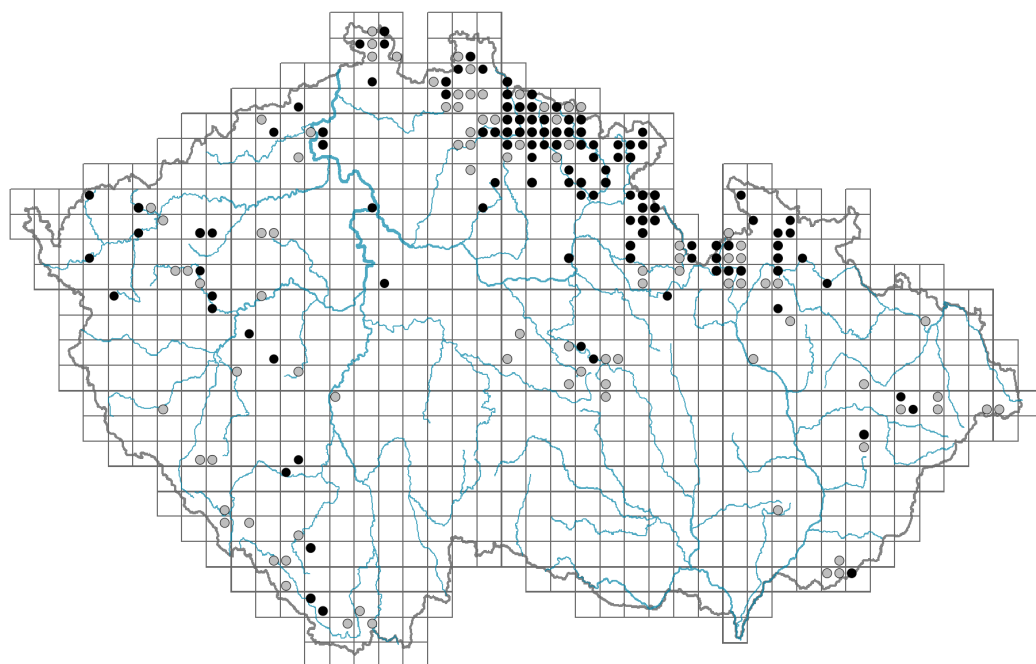


# Campanula latifolia

## Distribution

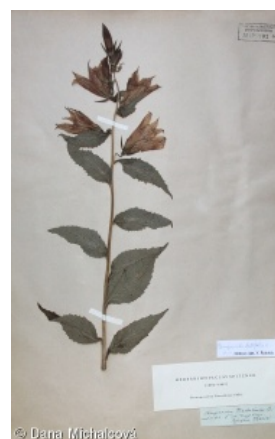


### Map info

● revised records

○ unrevised records

On the map are not visualized records without the coordinates and records marked as incorrect or doubtful.



© Dana Michalčová



© Dana Michalčová



© Kamila Rečzyńska

## Habitus and growth type

Height [m]: **0.6-1.5**

Growth form: **clonal herb**

Life form: **hemicryptophyte**

Life strategy: **CS - competitor/stress-tolerator**

Life strategy (Pierce method based on leaf traits): **CR**

Life strategy (Pierce method, C-score): **51.5 %**

Life strategy (Pierce method, S-score): **0 %**

Life strategy (Pierce method, R-score): **48.6 %**

## Leaf

Leaf presence and metamorphosis: **leaves present, not modified**

Leaf arrangement (phyllotaxis): **alternate**

Leaf shape: **simple - entire**

Stipules: **absent**

Petiole: **both present and absent**

Leaf life span: **summer green**

Leaf anatomy: **mesomorphic, hygromorphic**

## Flower

Flowering period [month]: **June-July**

Flowering phase: **8 Clematis vitalba-Galium sylvaticum (mid-summer)**

Flower colour: **white, blue-violet**

Flower symmetry: **actinomorphic**

Perianth type: **calyx and corolla**

Perianth fusion: **fused**

Shape of the sympetalous corolla or syntepalous perianth: **campanulate**

Calyx fusion: **synsepalous**

Inflorescence type: **racemus**

Dicliny: **synoecious**

Generative reproduction type: **facultative allogamy**

Pollination syndrome: **insect-pollination**

### Fruit, seed and dispersal

Fruit type: **dry fruit - capsule**

Fruit colour: **brown**

Reproduction type: **by seed/spores and vegetatively**

Dispersal unit (diaspore): **seed**

Dispersal strategy: **Allium (mainly autochory)**

Myrmecochory: **non-myrmecochorous (b)**

### Belowground organs and clonality

Shoot metamorphosis: **rhizome**

Storage organ: **rhizome**

Type of clonal growth organ: **epigeogenous rhizome**

Freely dispersible organs of clonal growth: **absent**

Shoot life span (cyclicality): **dicyclic or polycyclic shoots prevailing**

Branching type of stem-derived organs of clonal growth: **sympodial**

Primary root: **absent**

Persistence of the clonal growth organ [year]: **4**

Number of clonal offspring: **1**

Lateral spreading distance by clonal growth [m]: **0.01**

Clonal index: **3**

### Bud bank

Number of buds per shoot at the soil surface (root buds excluded): **5**

Number of buds per shoot at a depth of 0–10 cm (root buds excluded): **5**

Number of buds per shoot at a depth greater than 10 cm (root buds excluded): **0**

Size of the belowground bud bank (root buds excluded): **10**

Depth of the belowground bud bank (root buds excluded) [cm]: **3**

Number of buds per shoot at the soil surface (root buds included): **5**

Number of buds per shoot at a depth of 0–10 cm (root buds included): **5**

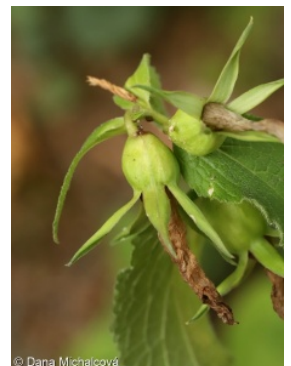
Number of buds per shoot at a depth greater than 10 cm (root buds included): **0**

Size of the belowground bud bank (root buds included): **10**

Depth of the belowground bud bank (root buds included) [cm]: **3**

### Trophic mode

Parasitism and mycoheterotrophy: **autotrophic**



Carnivory: **non-carnivorous**

Symbiotic nitrogen fixation: **no nitrogen-fixing symbionts**

## Karyology

Chromosome number (2n): **34**

Ploidy level (x): **2**

2C genome size [Mbp]: **2593.4**

1Cx monoploid genome size [Mbp]: **1296.7**

Genomic GC content: **40.6 %**

## Taxon origin

Origin in the Czech Republic: **native**

## Ecological indicator values

Ellenberg-type indicator values

Light indicator value: **5 - semi-shade plant, only exceptionally occurring in full light, but usually at more than 10% of the diffuse radiation incident in an open area**

Temperature indicator value: **5 - moderate heat indicator, occurring from lowland to montane belt, mainly in submontane-temperate areas**

Moisture indicator value: **6 - transition between values 5 and 7**

Reaction indicator value: **7 - indicator of slightly acidic to slightly basic conditions, never occurring in very acidic conditions**

Nutrient indicator value: **7 - occurring at nutrient-rich sites more often than at average sites and only exceptionally at poor sites**

Salinity indicator value: **0 - not salt tolerant, glycophyte**

Indicator values for disturbance

Whole-community disturbance frequency indicator value: **-1.72**

Herb layer disturbance frequency indicator value: **-0.65**

Whole-community disturbance severity indicator value: **0.25**

Herb layer disturbance severity indicator value: **0.17**

Whole-community structure based disturbance indicator value: **0.17**

Herb layer structure-based disturbance indicator value: **0.22**

## Habitat and sociology

Occurrence in habitats

2 Alpine and subalpine grasslands

2B Subalpine tall-forb and tall-grass vegetation: **1 - rare occurrence**

4 Wetland and riverine herbaceous vegetation

4K Petasites fringes of montane brooks: **2 - optimum**

11 Heathlands and scrub

11H Subalpine deciduous scrub: **1 - rare occurrence**

11J Willow galleries of loamy and sandy river banks: **1 - rare occurrence**

11R Scrub and pioneer woodland of forests clearings: **1 - rare occurrence**



## 12 Forests

12B Alluvial forests: **2 - optimum**12D Ravine forests: **1 - rare occurrence**12E Herb-rich beech forests: **1 - rare occurrence**

## 13 Anthropogenic vegetation

13E Perennial nitrophilous herbaceous vegetation of mesic sites: **2 - optimum**

## Affinity to the forest environment

Affinity to the forest environment in Mesophyticum and Oreophyticum: **1.2 - taxon occurring mainly along forest edges and in forest openings, including forest roads and paths, windthrow sites, burnt sites and forest clearings**

## Diagnostic taxon

Diagnostic taxon of associations: [ADD04 \*Laserpitio archangelicae-Dactylidetum glomeratae\*](#)

## Constant taxon

Constant taxon of associations: [ADD04 \*Laserpitio archangelicae-Dactylidetum glomeratae\*](#)

## Ecological specialization indices

Ecological specialization index for all vegetation types: **5.5**Ecological specialization index for non-forest vegetation: **5.5**Ecological specialization index for forest vegetation: **6.2**

## Colonization ability

Index of colonization success (ICS): **1****Distribution and frequency**Floristic zone: **boreal, northern temperate, southern temperate, submeridional**Floristic region: **Europe, Western Asia**Continental degree: **5**Distribution range extension along the continentality gradient: **4**Elevational belt in the Czech Republic: **submontane belt, montane belt**Occurrence frequency in the basic grid mapping cells and quadrants of the basic grid mapping cells: **129**taxon.data.freq\_in\_quad: **207**

## Commonness in vegetation plots from the Czech Republic

Occurrence frequency in vegetation plots: **0.1 %**Occurrence frequency in vegetation plots with a cover above 5%: **4.5 %**Occurrence frequency in vegetation plots with a cover above 25%: **4.5 %**Occurrence frequency in vegetation plots with a cover above 50%: **0 %**Mean percentage cover in vegetation plots: **3.7 %**Maximum percentage cover in vegetation plots: **38 %**

## Number of habitats with taxon occurrence in the Czech Republic

Number of narrow habitats in which the taxon occurs: **9**Number of narrow habitats in which the taxon has its optimum: **3**Number of broad habitats in which the taxon occurs: **5**Number of broad habitats in which the taxon has its optimum: **3**

## **Threats and protection**

Red List 2017 (national categories): **C3 - vulnerable taxon**

Red List 2017 (IUCN categories): **NT - near threatened**

Legal protection: **not protected by law**