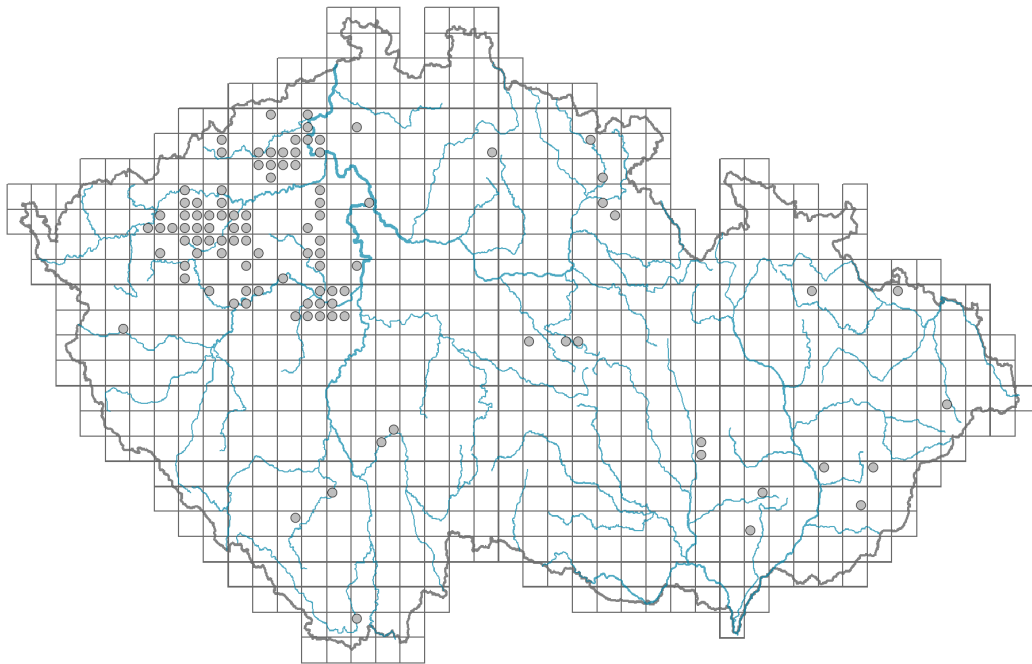


# *Campanula rapunculus*

## Distribution



### Map info

● revised records

● unrevised records

On the map are not visualized records without the coordinates and records marked as incorrect or doubtful.



## Habitus and growth type

Height [m]: **0.3-0.6**

Growth form: **monocarpic perennial non-clonal herb**

Life form: **hemicryptophyte**

Life strategy: **CSR - competitor/stress-tolerator/ruderal**

Life strategy (Pierce method based on leaf traits): **R/CR**

Life strategy (Pierce method, C-score): **24.3 %**

Life strategy (Pierce method, S-score): **0 %**

Life strategy (Pierce method, R-score): **75.7 %**

## Leaf

Leaf presence and metamorphosis: **leaves present, not modified**

Leaf arrangement (phyllotaxis): **alternate**

Leaf shape: **simple - entire**

Stipules: **absent**

Petiole: **both present and absent**

Leaf life span: **summer green**

Leaf anatomy: **mesomorphic**

## Flower

Flowering period [month]: **May-July**

Flowering phase: **7 Ligustrum vulgare-Stachys sylvatica (end of early summer)**

Flower colour: **blue**

Flower symmetry: **actinomorphic**

Perianth type: **calyx and corolla**

Perianth fusion: **fused**

Shape of the sympetalous corolla or syntepalous perianth: **campanulate**

Calyx fusion: **synsepalous**

Inflorescence type: **racemus, panicula**

Dicliny: **synoecious**

Generative reproduction type: **allogamy self-incompatibility**

Pollination syndrome: **insect-pollination**



## Fruit, seed and dispersal

Fruit type: **dry fruit - capsule**

Reproduction type: **only by seed/spores**

Dispersal unit (diaspore): **seed**

Dispersal strategy: **Allium (mainly autochory)**

Myrmecochory: **non-myrmecochorous (b)**

## Belowground organs and clonality

Root metamorphosis: **primary storage root**

Storage organ: **primary storage root**

Shoot life span (cyclicality): **dicyclic or polycyclic shoots prevailing**

Primary root: **present**

Bud bank

Number of buds per shoot at the soil surface (root buds excluded): **5**

Number of buds per shoot at a depth of 0–10 cm (root buds excluded): **5**

Number of buds per shoot at a depth greater than 10 cm (root buds excluded): **0**

Size of the belowground bud bank (root buds excluded): **10**

Depth of the belowground bud bank (root buds excluded) [cm]: **3**

Number of buds per shoot at the soil surface (root buds included): **5**

Number of buds per shoot at a depth of 0–10 cm (root buds included): **5**

Number of buds per shoot at a depth greater than 10 cm (root buds included): **0**

Size of the belowground bud bank (root buds included): **10**

Depth of the belowground bud bank (root buds included) [cm]: **3**



## Trophic mode

Parasitism and mycoheterotrophy: **autotrophic**

Carnivory: **non-carnivorous**

Symbiotic nitrogen fixation: **no nitrogen-fixing symbionts**

## Taxon origin

Origin in the Czech Republic: **neophyte**

Invasion status: **casual**

Geographic origin: **Europe, Mediterranean**

Year of the first record in the wild: **1892**

Period of introduction: **Late Modern Period (1800-1950)**

Introduction pathway: **unintentional - plantations, unintentional - anthropogenic, unintentional - nature**

### Ecological indicator values

Ellenberg-type indicator values

Light indicator value: **8 - light plant, only exceptionally occurring at less than 40% of diffuse radiation incident in an open area**

Temperature indicator value: **7 - heat indicator, occurring in relatively warm lowlands**

Moisture indicator value: **3 - missing on damp soil**

Reaction indicator value: **8 - transition between values 7 and 9, occurring mostly in calcium-rich conditions**

Nutrient indicator value: **5 - occurring at moderately nutrient-rich sites, and less frequently at poor and rich sites**

Salinity indicator value: **0 - not salt tolerant, glycophyte**

### Habitat and sociology

Affinity to the forest environment

Affinity to the forest environment in Thermophyticum: **0 - taxon that does not spontaneously occur in Czech forests**

Affinity to the forest environment in Mesophyticum and Oreophyticum: **0 - taxon that does not spontaneously occur in Czech forests**

Ecological specialization indices

Ecological specialization index for all vegetation types: **5.1**

Ecological specialization index for non-forest vegetation: **5.4**

### Distribution and frequency

Floristic zone: **southern temperate, submeridional, meridional**

Floristic region: **Europe**

Distribution range extension along the continentality gradient: **5**

Occurrence frequency in the basic grid mapping cells and quadrants of the basic grid mapping cells: **61**

taxon.data.freq\_in\_quad: **103**

Commonness in vegetation plots from the Czech Republic

Occurrence frequency in vegetation plots: **0 %**

Occurrence frequency in vegetation plots with a cover above 5%: **20 %**

Occurrence frequency in vegetation plots with a cover above 25%: **0 %**

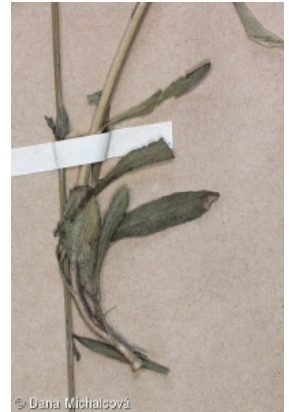
Occurrence frequency in vegetation plots with a cover above 50%: **0 %**

Mean percentage cover in vegetation plots: **4 %**

Maximum percentage cover in vegetation plots: **13 %**

### Threats and protection

Red List 2017 (national categories): **taxon is not on the Red List**



Red List 2017 (IUCN categories): **LC(NA) - least concern (taxon is not on the Red List)**

Legal protection: **not protected by law**