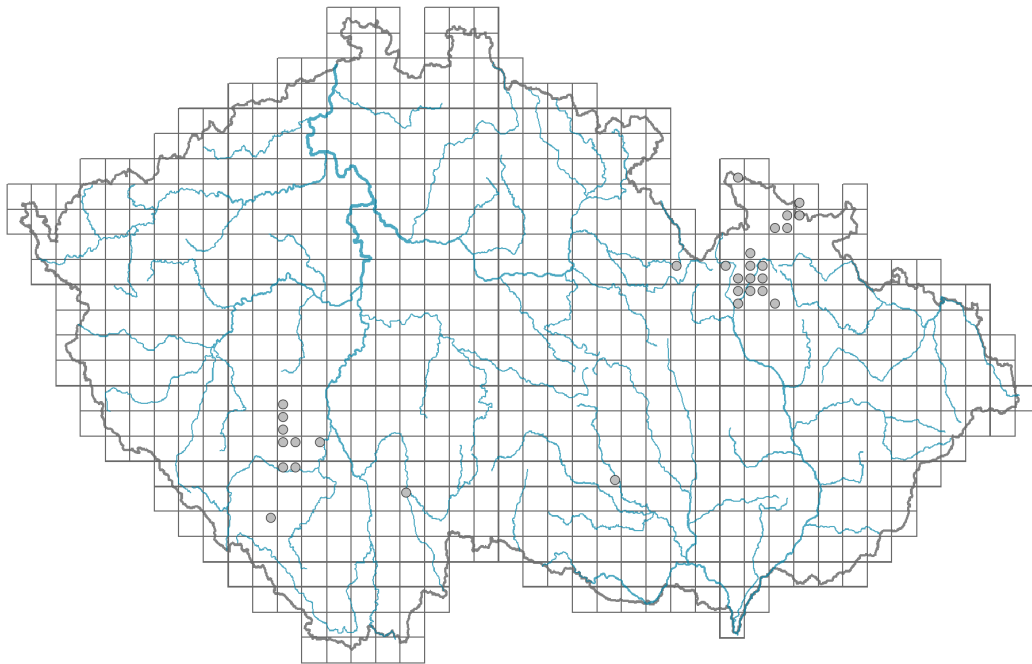


Cardamine chelidonia

Distribution



© Libor Zdařil

Map info

● revised records

○ unrevised records

On the map are not visualized records without the coordinates and records marked as incorrect or doubtful.

Habitus and growth type

Height [m]: **0.1-0.4**

Life form: **therophyte (hemicryptophyte)**

Leaf

Leaf presence and metamorphosis: **leaves present, not modified**

Leaf arrangement (phyllotaxis): **alternate**

Leaf shape: **compound - imparipinnate, compound - bipinnate**

Stipules: **absent**

Petiole: **present**

Flower

Flowering period [month]: **June**

Flower colour: **pink**

Flower symmetry: **actinomorphic**

Perianth type: **calyx and corolla**

Perianth fusion: **free**

Calyx fusion: **aposepalous**

Inflorescence type: **racemus**

Generative reproduction type: **mixed mating**



© Dana Michalčová



© Gianmaria Bonari

Fruit, seed and dispersal

Fruit type: **dry fruit - siliqua**

Dispersal unit (diaspore): **seed**

Dispersal strategy: **Allium (mainly autochory)**

Myrmecochory: **non-myrmecochorous (b)**

Trophic mode

Parasitism and mycoheterotrophy: **autotrophic**

Carnivory: **non-carnivorous**

Symbiotic nitrogen fixation: **no nitrogen-fixing symbionts**

Karyology

Chromosome number (2n): **32**

Ploidy level (x): **4**

2C genome size [Mbp]: **635.84**

1Cx monoploid genome size [Mbp]: **158.96**

Genomic GC content: **39.2 %**

Taxon origin

Origin in the Czech Republic: **neophyte**

Invasion status: **naturalized**

Geographic origin: **Mediterranean**

Year of the first record in the wild: **1930**

Period of introduction: **Late Modern Period (1800-1950)**

Introduction pathway: **unintentional - anthropogenic, unintentional - nature**

Habitat and sociology

Occurrence in habitats

11 Heathlands and scrub

11R Scrub and pioneer woodland of forests clearings: **1 - rare occurrence**

12 Forests

12B Alluvial forests: **1 - rare occurrence**

12C Oak-hornbeam forests: **2 - optimum**

12D Ravine forests: **1 - rare occurrence**

12V Spruce plantations: **1 - rare occurrence**

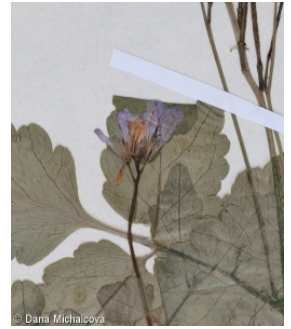
13 Anthropogenic vegetation

13E Perennial nitrophilous herbaceous vegetation of mesic sites: **2 - optimum**

13F Herbaceous vegetation of forests clearings and Rubus scrub: **1 - rare occurrence**

Affinity to the forest environment

Affinity to the forest environment in Mesophyticum and Oreophyticum: **2.1 - taxon occurring both in the forest and open vegetation**



Distribution and frequency

Elevational belt in the Czech Republic: **colline belt**

Occurrence frequency in the basic grid mapping cells and quadrants of the basic grid mapping cells: 19

taxon.data.freq_in_quad: 30

Number of habitats with taxon occurrence in the Czech Republic

Number of narrow habitats in which the taxon occurs: 7

Number of narrow habitats in which the taxon has its optimum: 2

Number of broad habitats in which the taxon occurs: 3

Number of broad habitats in which the taxon has its optimum: 2

Threats and protection

Red List 2017 (national categories): **taxon is not on the Red List**

Red List 2017 (IUCN categories): **LC(NA) - least concern (taxon is not on the Red List)**

Legal protection: **not protected by law**