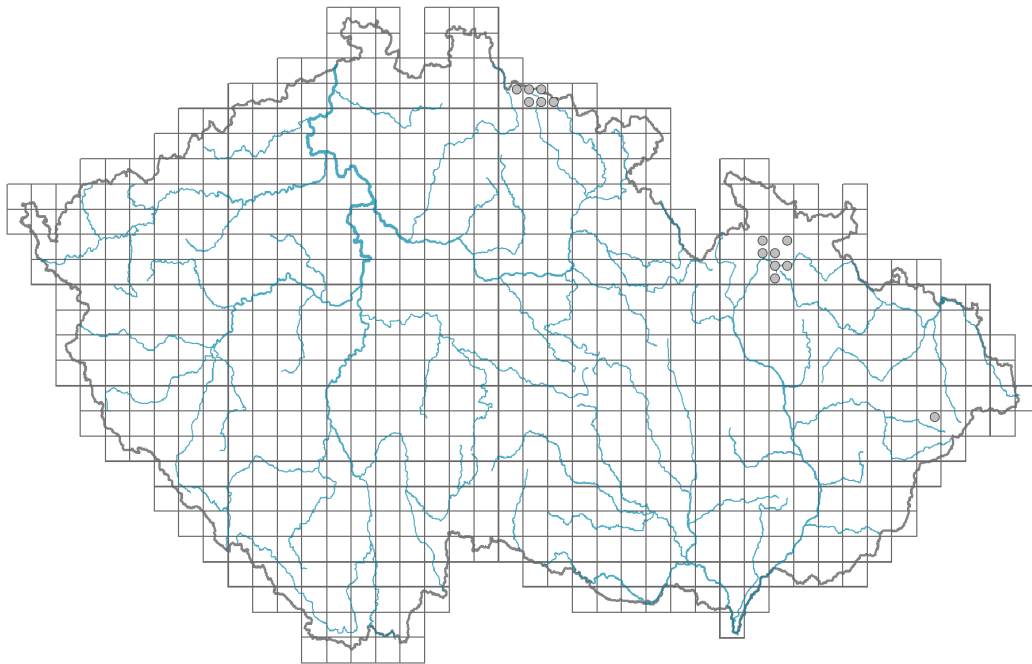


Cardamine resedifolia

Distribution



Map info

● revised records

○ unrevised records

On the map are not visualized records without the coordinates and records marked as incorrect or doubtful.



Habitus and growth type

Height [m]: **0.05-0.15**

Growth form: **polycarpic perennial non-clonal herb**

Life form: **hemicryptophyte**

Life strategy: **CSR - competitor/stress-tolerator/ruderal**

Life strategy (Pierce method based on leaf traits): **S/SR**

Life strategy (Pierce method, C-score): **4 %**

Life strategy (Pierce method, S-score): **62.4 %**

Life strategy (Pierce method, R-score): **33.6 %**

Leaf

Leaf presence and metamorphosis: **leaves present, not modified**

Leaf arrangement (phyllotaxis): **alternate**

Leaf shape: **simple - pinnately divided**

Stipules: **absent**

Petiole: **present**

Leaf life span: **evergreen**

Leaf anatomy: **mesomorphic**

Flower

Flowering period [month]: **May-July**

Flower colour: **white**
 Flower symmetry: **actinomorphic**
 Perianth type: **calyx and corolla**
 Perianth fusion: **free**
 Calyx fusion: **aposepalous**
 Inflorescence type: **racemus**
 Dicliny: **synoecious**
 Generative reproduction type: **facultative autogamy**
 Pollination syndrome: **insect-pollination, selfing**

Fruit, seed and dispersal

Fruit type: **dry fruit - siliqua**
 Fruit colour: **brown**
 Reproduction type: **only by seed/spores**
 Dispersal unit (diaspore): **seed**
 Dispersal strategy: **Allium (mainly autochory)**
 Myrmecochory: **non-myrmecochorous (b)**

Belowground organs and clonality

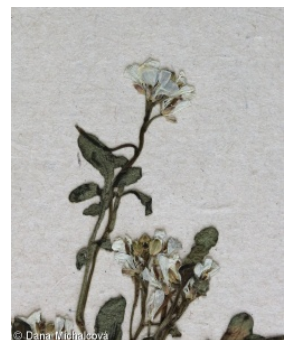
Shoot metamorphosis: **pleiocorm**
 Storage organ: **pleiocorm**
 Shoot life span (cyclicality): **dicyclic or polycyclic shoots prevailing**
 Branching type of stem-derived organs of clonal growth: **sympodial**
 Primary root: **present**
 Position of root buds: **lateral roots**
 Role of root buds in life-history of a plant: **additive**
 Bud bank
 Number of buds per shoot at the soil surface (root buds excluded): **5**
 Number of buds per shoot at a depth of 0–10 cm (root buds excluded): **5**
 Number of buds per shoot at a depth greater than 10 cm (root buds excluded): **0**
 Size of the belowground bud bank (root buds excluded): **10**
 Depth of the belowground bud bank (root buds excluded) [cm]: **3**
 Number of buds per shoot at the soil surface (root buds included): **5**
 Number of buds per shoot at a depth of 0–10 cm (root buds included): **14**
 Number of buds per shoot at a depth greater than 10 cm (root buds included): **11**
 Size of the belowground bud bank (root buds included): **30**
 Depth of the belowground bud bank (root buds included) [cm]: **8**

Trophic mode

Parasitism and mycoheterotrophy: **autotrophic**
 Carnivory: **non-carnivorous**
 Symbiotic nitrogen fixation: **no nitrogen-fixing symbionts**

Taxon origin

Origin in the Czech Republic: **native**



Ecological indicator values

Ellenberg-type indicator values

Light indicator value: **8 - light plant, only exceptionally occurring at less than 40% of diffuse radiation incident in an open area**

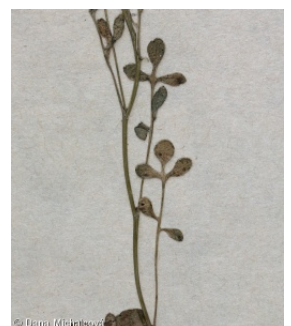
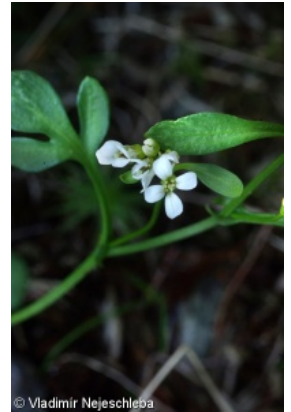
Temperature indicator value: **2 - transition between values 1 and 3**

Moisture indicator value: **5 - indicator of fresh soils, focus on soils of average moisture, missing on wet and on soils that frequently dry out**

Reaction indicator value: **3 - acidity indicator, occurring mainly in acidic conditions, exceptionally in neutral conditions**

Nutrient indicator value: **3 - occurring at nutrient-poor sites more frequently than at average sites and exceptionally at rich sites**

Salinity indicator value: **0 - not salt tolerant, glycophyte**



Habitat and sociology

Occurrence in habitats

1 Vegetation of cliffs, screes and walls

1B Siliceous cliffs and block fields: **2 - optimum**

2 Alpine and subalpine grasslands

2B Subalpine tall-forb and tall-grass vegetation: **1 - rare occurrence**

4 Wetland and riverine herbaceous vegetation

4K Petasites fringes of montane brooks: **1 - rare occurrence**

Affinity to the forest environment

Affinity to the forest environment in Thermophyticum: **0 - taxon that does not spontaneously occur in Czech forests**

Affinity to the forest environment in Mesophyticum and Oreophyticum: **0 - taxon that does not spontaneously occur in Czech forests**

Distribution and frequency

Floristic zone: **northern temperate, southern temperate, submeridional**

Floristic region: **Europe**

Continental degree: **4**

Distribution range extension along the continentality gradient: **2**

Elevational belt in the Czech Republic: **montane belt, subalpine belt**

Occurrence frequency in the basic grid mapping cells and quadrants of the basic grid mapping cells: **7**

taxon.data.freq_in_quad: 15

Number of habitats with taxon occurrence in the Czech Republic

Number of narrow habitats in which the taxon occurs: **3**

Number of narrow habitats in which the taxon has its optimum: **1**

Number of broad habitats in which the taxon occurs: **3**

Number of broad habitats in which the taxon has its optimum: **1**

Threats and protection

Red List 2017 (national categories): **C1r - critically threatened taxon, rare**

Red List 2017 (IUCN categories): **EN - endangered**

Legal protection: **critically threatened taxon**

