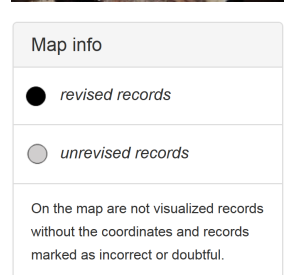
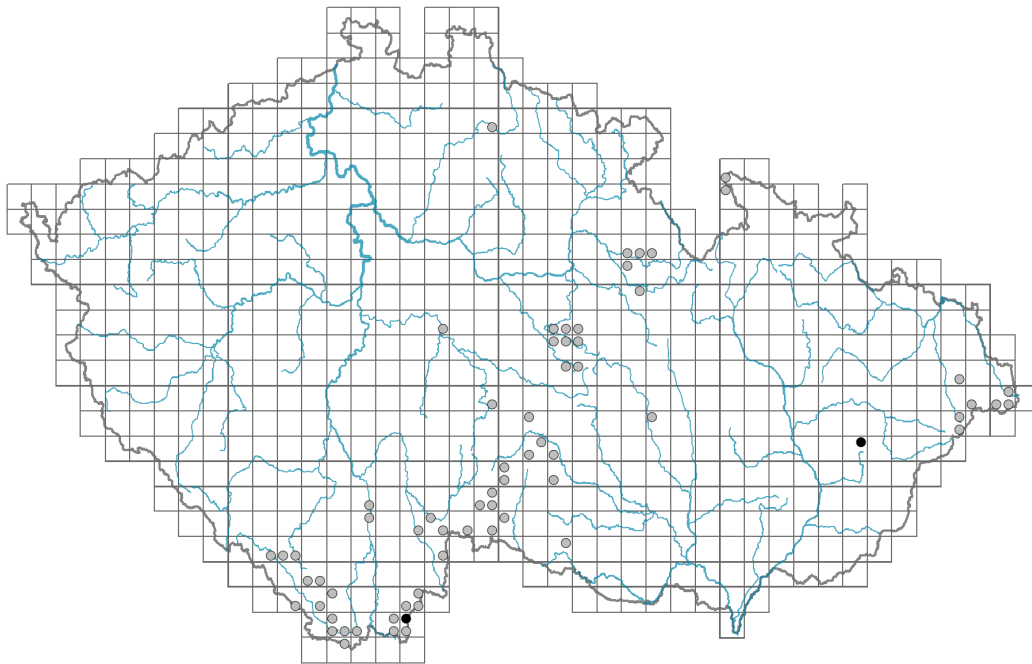


Cardamine trifolia

Distribution



Habitus and growth type

Height [m]: **0.15-0.3**

Growth form: **clonal herb**

Life form: **geophyte**

Life strategy: **CSR - competitor/stress-tolerator/ruderal**

Leaf

Leaf presence and metamorphosis: **leaves present, not modified**

Leaf shape: **compound - ternate**

Stipules: **absent**

Petiole: **mainly present**

Leaf life span: **evergreen**

Leaf anatomy: **mesomorphic, hygromorphic**

Flower

Flowering period [month]: **April-May**

Flowering phase: **3 Prunus avium-Ranunculus auricomus (end of early spring)**

Flower colour: **white**

Flower symmetry: **actinomorphic**

Perianth type: **calyx and corolla**

Perianth fusion: **free**



Calyx fusion: **aposepalous**
 Inflorescence type: **racemus**
 Dicliny: **synoecious**
 Pollination syndrome: **insect-pollination, selfing**

Fruit, seed and dispersal

Fruit type: **dry fruit - siliqua**
 Fruit colour: **brown**
 Reproduction type: **by seed/spores and vegetatively**
 Dispersal unit (diaspore): **seed**
 Dispersal strategy: **Allium (mainly autochory)**
 Myrmecochory: **non-myrmecochorous (b)**

Belowground organs and clonality

Shoot metamorphosis: **stolon**
 Storage organ: **stolon**
 Type of clonal growth organ: **stolon**
 Freely dispersible organs of clonal growth: **absent**
 Shoot life span (cyclicality): **dicyclic or polycyclic shoots prevailing**
 Branching type of stem-derived organs of clonal growth: **sympodial**
 Primary root: **absent**
 Persistence of the clonal growth organ [year]: **2**
 Number of clonal offspring: **1**
 Lateral spreading distance by clonal growth [m]: **0.13**
 Clonal index: **4**
Bud bank
 Number of buds per shoot at the soil surface (root buds excluded): **15**
 Number of buds per shoot at a depth of 0–10 cm (root buds excluded): **0**
 Number of buds per shoot at a depth greater than 10 cm (root buds excluded): **0**
 Size of the belowground bud bank (root buds excluded): **15**
 Depth of the belowground bud bank (root buds excluded) [cm]: **1**
 Number of buds per shoot at the soil surface (root buds included): **15**
 Number of buds per shoot at a depth of 0–10 cm (root buds included): **0**
 Number of buds per shoot at a depth greater than 10 cm (root buds included): **0**
 Size of the belowground bud bank (root buds included): **15**
 Depth of the belowground bud bank (root buds included) [cm]: **1**

Trophic mode

Parasitism and mycoheterotrophy: **autotrophic**
 Carnivory: **non-carnivorous**
 Symbiotic nitrogen fixation: **no nitrogen-fixing symbionts**

Karyology

Chromosome number (2n): **16**
 Ploidy level (x): **2**



2C genome size [Mbp]: **639.46**
1Cx monoploid genome size [Mbp]: **319.73**
Genomic GC content: **40 %**

Taxon origin

Origin in the Czech Republic: **native**

Ecological indicator values

Ellenberg-type indicator values

Light indicator value: **3 - shade plant, usually occurring where the incident radiation is less than 5% of that in an open area, but also at sunnier sites**

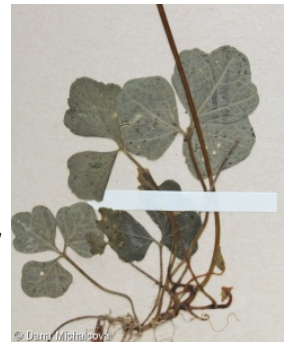
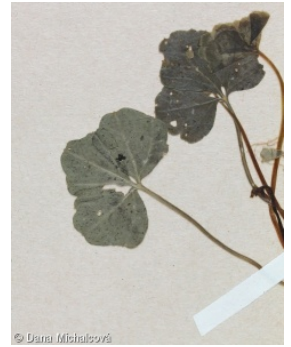
Temperature indicator value: **4 - transition between values 3 and 5**

Moisture indicator value: **6 - transition between values 5 and 7**

Reaction indicator value: **7 - indicator of slightly acidic to slightly basic conditions, never occurring in very acidic conditions**

Nutrient indicator value: **7 - occurring at nutrient-rich sites more often than at average sites and only exceptionally at poor sites**

Salinity indicator value: **0 - not salt tolerant, glycophyte**



Habitat and sociology

Occurrence in habitats

11 Heathlands and scrub

11R Scrub and pioneer woodland of forests clearings: **1 - rare occurrence**

12 Forests

12E Herb-rich beech forests: **2 - optimum**

12G Acidophilous beech forests: **1 - rare occurrence**

12R Acidophilous spruce forests: **1 - rare occurrence**

12V Spruce plantations: **1 - rare occurrence**

Affinity to the forest environment

Affinity to the forest environment in Mesophyticum and Oreophyticum: **1.1 - taxon occurring mainly in the closed forest**

Ecological specialization indices

Ecological specialization index for all vegetation types: **6.4**

Ecological specialization index for forest vegetation: **6.5**

Colonization ability

Index of colonization success (ICS): **1**

Distribution and frequency

Floristic zone: **northern temperate, southern temperate, submeridional**

Floristic region: **Europe**

Continentality degree: **5**

Distribution range extension along the continentality gradient: **1**

Elevational belt in the Czech Republic: **submontane belt, montane belt (colline belt)**

Occurrence frequency in the basic grid mapping cells and quadrants of the basic grid

mapping cells: 53

taxon.data.freq_in_quad: 72

Commonness in vegetation plots from the Czech Republic

Occurrence frequency in vegetation plots: **0 %**

Occurrence frequency in vegetation plots with a cover above 5%: **20 %**

Occurrence frequency in vegetation plots with a cover above 25%: **0 %**

Occurrence frequency in vegetation plots with a cover above 50%: **0 %**

Mean percentage cover in vegetation plots: **4.8 %**

Maximum percentage cover in vegetation plots: **13 %**

Number of habitats with taxon occurrence in the Czech Republic

Number of narrow habitats in which the taxon occurs: **5**

Number of narrow habitats in which the taxon has its optimum: **1**

Number of broad habitats in which the taxon occurs: **2**

Number of broad habitats in which the taxon has its optimum: **1**

Threats and protection

Red List 2017 (national categories): **C3 - vulnerable taxon**

Red List 2017 (IUCN categories): **NT - near threatened**

Legal protection: **not protected by law**