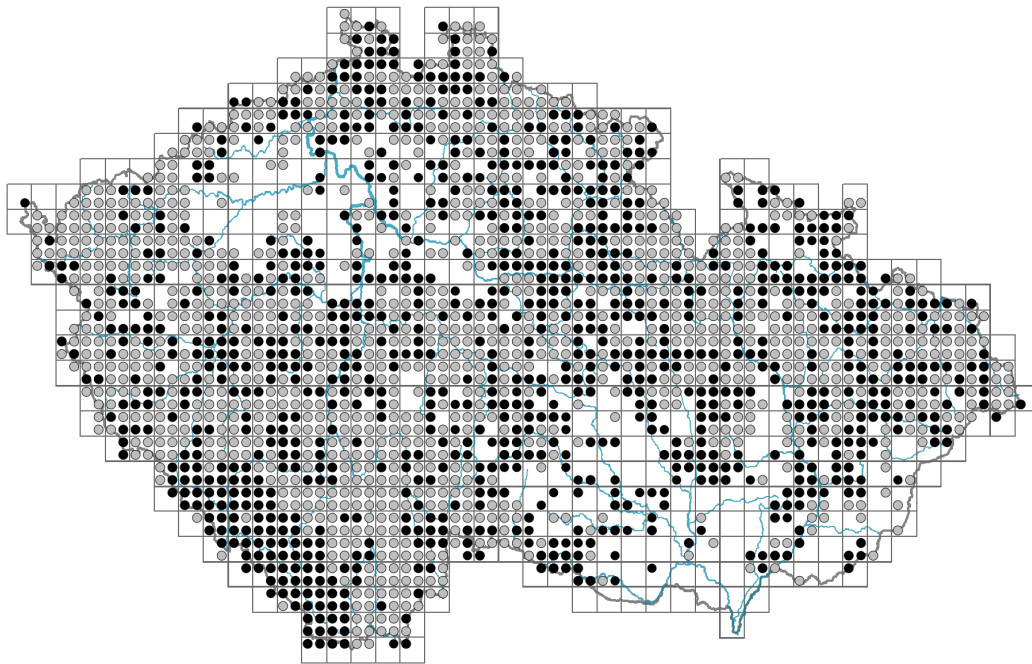


Carex brizoides

Distribution



Map info

● revised records

○ unrevised records

On the map are not visualized records without the coordinates and records marked as incorrect or doubtful.



Habitus and growth type

Height [m]: **0.2-0.5**

Growth form: **clonal herb**

Life form: **hemicryptophyte (geophyte)**

Life strategy: **CSR - competitor/stress-tolerator/ruderal**

Life strategy (Pierce method based on leaf traits): **S/CSR**

Life strategy (Pierce method, C-score): **20.4 %**

Life strategy (Pierce method, S-score): **53.4 %**

Life strategy (Pierce method, R-score): **26.2 %**

Leaf

Leaf presence and metamorphosis: **leaves present, not modified**

Leaf arrangement (phyllotaxis): **alternate**

Leaf shape: **simple - entire**

Stipules: **absent**

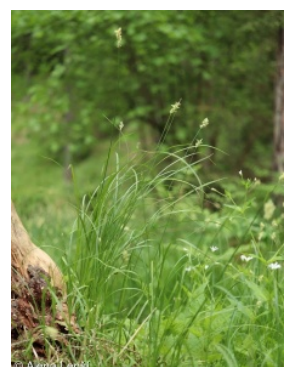
Petiole: **absent**

Leaf life span: **summer green**

Leaf anatomy: **scleromorphic, helomorphic**

Flower

Flowering period [month]: **May-June**



Flowering phase: **5 Sorbus aucuparia-Galium odoratum (end of mid-spring)**
 Flower colour: **green**
 Perianth type: **flower achlamydeous**
 Inflorescence type: **spica e spiculis composita**
 Dicliny: **monoecious**
 Generative reproduction type: **mixed mating**
 Pollination syndrome: **wind-pollination**

Fruit, seed and dispersal

Fruit type: **dry fruit - nut enclosed in an utricle**
 Fruit colour: **brown**
 Reproduction type: **by seed/spores and vegetatively**
 Dispersal unit (diaspore): **fruit, infrutescence or its part**
 Dispersal strategy: **Allium (mainly autochory)**
 Myrmecochory: **non-myrmecochorous (a)**

Belowground organs and clonality

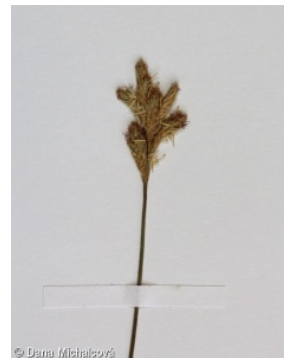
Shoot metamorphosis: **stolon, rhizome**
 Storage organ: **stolon, rhizome**
 Type of clonal growth organ: **hypogeogenous rhizome**
 Freely dispersible organs of clonal growth: **absent**
 Shoot life span (cyclicality): **dicyclic or polycyclic shoots prevailing**
 Branching type of stem-derived organs of clonal growth: **sympodial**
 Primary root: **absent**
 Persistence of the clonal growth organ [year]: **4**
 Number of clonal offspring: **3.5**
 Lateral spreading distance by clonal growth [m]: **0.07**
 Clonal index: **5**

Bud bank

Number of buds per shoot at the soil surface (root buds excluded): **5**
 Number of buds per shoot at a depth of 0–10 cm (root buds excluded): **15**
 Number of buds per shoot at a depth greater than 10 cm (root buds excluded): **0**
 Size of the belowground bud bank (root buds excluded): **20**
 Depth of the belowground bud bank (root buds excluded) [cm]: **4**
 Number of buds per shoot at the soil surface (root buds included): **5**
 Number of buds per shoot at a depth of 0–10 cm (root buds included): **15**
 Number of buds per shoot at a depth greater than 10 cm (root buds included): **0**
 Size of the belowground bud bank (root buds included): **20**
 Depth of the belowground bud bank (root buds included) [cm]: **4**

Trophic mode

Parasitism and mycoheterotrophy: **autotrophic**
 Carnivory: **non-carnivorous**
 Symbiotic nitrogen fixation: **no nitrogen-fixing symbionts**



Karyology

Chromosome number (2n): **58**

Ploidy level (x): **2**

2C genome size [Mbp]: **637.58**

1Cx monoploid genome size [Mbp]: **318.79**

Genomic GC content: **35.4 %**

Taxon origin

Origin in the Czech Republic: **native**

Ecological indicator values

Ellenberg-type indicator values

Light indicator value: **5x - semi-shade plant, only exceptionally occurring in full light, but usually at more than 10% of the diffuse radiation incident in an open area (generalist)**

Temperature indicator value: **5 - moderate heat indicator, occurring from lowland to montane belt, mainly in submontane-temperate areas**

Moisture indicator value: **7 - humidity indicator, focus on well moistened, but not wet soils**

Reaction indicator value: **4 - transition between values 3 and 5**

Nutrient indicator value: **4 - transition between values 3 and 5**

Salinity indicator value: **0 - not salt tolerant, glycophyte**

Indicator values for disturbance

Whole-community disturbance frequency indicator value: **-1.63**

Herb layer disturbance frequency indicator value: **-0.63**

Whole-community disturbance severity indicator value: **0.29**

Herb layer disturbance severity indicator value: **0.22**

Whole-community structure based disturbance indicator value: **0.23**

Herb layer structure-based disturbance indicator value: **0.3**

Habitat and sociology

Occurrence in habitats

2 Alpine and subalpine grasslands

2B Subalpine tall-forb and tall-grass vegetation: **1 - rare occurrence**

4 Wetland and riverine herbaceous vegetation

4A Reed-beds of eutrophic still waters: **1 - rare occurrence**

4D Riverine reed vegetation: **1 - rare occurrence**

4E Reed vegetation of brooks: **1 - rare occurrence**

4G Tall-sedge beds: **1 - rare occurrence**

4K Petasites fringes of montane brooks: **1 - rare occurrence**

4L Nitrophilous herbaceous fringes of lowland rivers: **1 - rare occurrence**

5 Vegetation of springs and mires

5B Lowland to montane soft-water springs: **1 - rare occurrence**

5D Calcareous fens: **1 - rare occurrence**

5E Acidic moss-rich fens and peatland meadows: **1 - rare occurrence**

6 Meadows and mesic pastures

6A Mesic Arrhenatherum meadows: **1 - rare occurrence**

6B Montane mesic meadows: **1 - rare occurrence**

6C Pastures and park grasslands: **1 - rare occurrence**

6D Alluvial meadows of lowland rivers: **1 - rare occurrence**

6E Wet Cirsium meadows: **3 - dominant**

6F Intermittently wet Molinia meadows: **2 - optimum**

7 Acidophilous grasslands

7A Subalpine and montane acidophilous grasslands: **1 - rare occurrence**

7B Submontane Nardus grasslands: **1 - rare occurrence**

8 Dry grasslands

8F Thermophilous forest fringe vegetation: **1 - rare occurrence**

11 Heathlands and scrub

11A Dry lowland to subalpine heathlands: **1 - rare occurrence**

11I Willow carrs: **1 - rare occurrence**

11J Willow galleries of loamy and sandy river banks: **1 - rare occurrence**

11L Tall mesic and xeric shrub: **1 - rare occurrence**

11R Scrub and pioneer woodland of forests clearings: **1 - rare occurrence**

12 Forests

12A Alder carrs: **1 - rare occurrence**

12B Alluvial forests: **3 - dominant**

12C Oak-hornbeam forests: **2 - optimum**

12D Ravine forests: **1 - rare occurrence**

12E Herb-rich beech forests: **1 - rare occurrence**

12G Acidophilous beech forests: **1 - rare occurrence**

12I Sub-continental thermophilous oak forests: **1 - rare occurrence**

12K Acidophilous oak forests: **1 - rare occurrence**

12L Boreo-continental pine forests: **1 - rare occurrence**

12P Peatland pine forests: **1 - rare occurrence**

12Q Peatland birch forests: **1 - rare occurrence**

12R Acidophilous spruce forests: **1 - rare occurrence**

12S Basiphilous spruce forests: **1 - rare occurrence**

12T Robinia pseudacacia plantations: **1 - rare occurrence**

12U Plantations of broad-leaved non-native trees: **1 - rare occurrence**

12V Spruce plantations: **1 - rare occurrence**

12W Pine and larch plantations: **1 - rare occurrence**

13 Anthropogenic vegetation

13E Perennial nitrophilous herbaceous vegetation of mesic sites: **1 - rare occurrence**

13F Herbaceous vegetation of forests clearings and Rubus scrub: **2 - optimum**

Affinity to the forest environment

Affinity to the forest environment in Thermophyticum: **2.1 - taxon occurring both in the forest and open vegetation**

Affinity to the forest environment in Mesophyticum and Oreophyticum: **2.1 - taxon occurring both in the forest and open vegetation**

Diagnostic taxon

Diagnostic taxon of associations: [**TDF10 *Scirpo sylvatici-Caricetum brizoidis***](#)

Constant taxon

Constant taxon of associations: [TDF10 *Scirpo sylvatici-Caricetum brizoidis*](#)

Dominant taxon

Dominant taxon of associations: [LAA01 *Thelypterido palustris-Alnetum glutinosae*](#), [LBA01 *Alnetum incanae*](#), [LBA03 *Carici remotae-Fraxinetum excelsioris*](#), [LBA06 *Ficario vernaе-Ulmetum campestris*](#), [LDA04 *Holco mollis-Quercetum roboris*](#), [TDF10 *Scirpo sylvatici-Caricetum brizoidis*](#), [XEA06 *Pteridietum aquilini*](#)

Ecological specialization indices

Ecological specialization index for all vegetation types: **4.1**

Ecological specialization index for non-forest vegetation: **5**

Ecological specialization index for forest vegetation: **4.7**

Colonization ability

Index of colonization success (ICS): **6**

Index of colonization potential (ICP): **5**

Optimum successional age [years]: **23**

Distribution and frequency

Floristic zone: **northern temperate, southern temperate, submeridional**

Floristic region: **Europe**

Continental degree: **5**

Distribution range extension along the continentality gradient: **3**

Elevational belt in the Czech Republic: **lowlands, colline belt, submontane belt, montane belt**

Expansive taxon in the region: **Bohemian Thermophyticum, Bohemian Moravian Mesophyticum, Bohemian Moravian Oreophyticum, Carpathian Mesophyticum**

Occurrence frequency in the basic grid mapping cells and quadrants of the basic grid mapping cells: **630**

taxon.data.freq_in_quad: **2038**

Commonness in vegetation plots from the Czech Republic

Occurrence frequency in vegetation plots: **2 %**

Occurrence frequency in vegetation plots with a cover above 5%: **44.5 %**

Occurrence frequency in vegetation plots with a cover above 25%: **22.4 %**

Occurrence frequency in vegetation plots with a cover above 50%: **10.5 %**

Mean percentage cover in vegetation plots: **16.2 %**

Maximum percentage cover in vegetation plots: **99 %**

Number of habitats with taxon occurrence in the Czech Republic

Number of narrow habitats in which the taxon occurs: **43**

Number of narrow habitats in which the taxon has its optimum: **5**

Number of broad habitats in which the taxon occurs: **9**

Number of broad habitats in which the taxon has its optimum: **3**

Threats and protection

Red List 2017 (national categories): **taxon is not on the Red List**

Red List 2017 (IUCN categories): **LC(NA) - least concern (taxon is not on the Red List)**

Legal protection: **not protected by law**