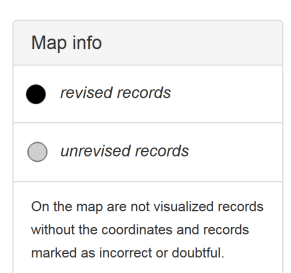
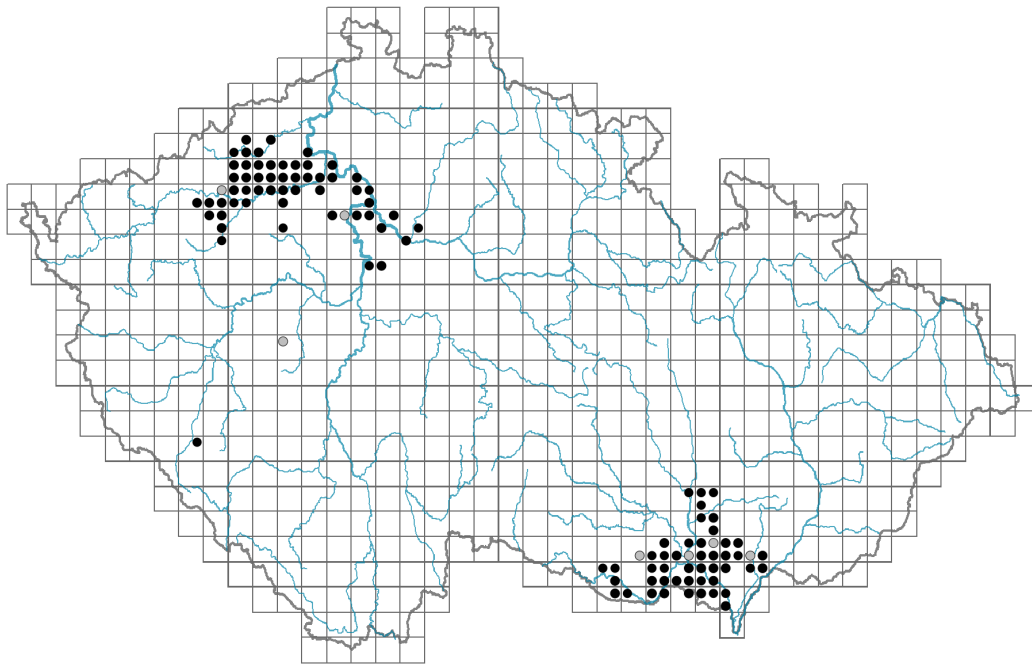


Carex secalina

Distribution



Habitus and growth type

Height [m]: **0.1-0.4**

Growth form: **clonal herb**

Life form: **hemicryptophyte**

Life strategy: **S - stress-tolerator**

Leaf

Leaf presence and metamorphosis: **leaves present, not modified**

Leaf arrangement (phyllotaxis): **alternate**

Leaf shape: **simple - entire**

Stipules: **absent**

Petiole: **absent**

Leaf life span: **summer green**

Leaf anatomy: **helomorphic**

Flower

Flowering period [month]: **May-July**

Flowering phase: **5 Sorbus aucuparia-Galium odoratum (end of mid-spring)**

Flower colour: **green**

Perianth type: **flower achlamydeous**

Inflorescence type: **spica e spiculis composita**



Dicliny: **monoecious**

Generative reproduction type: **mixed mating**

Pollination syndrome: **wind-pollination**

Fruit, seed and dispersal

Fruit type: **dry fruit - nut enclosed in an utricle**

Fruit colour: **brown**

Reproduction type: **by seed/spores and vegetatively**

Dispersal unit (diaspore): **fruit, infrutescence or its part**

Dispersal strategy: **Allium (mainly autochory)**

Belowground organs and clonality

Shoot metamorphosis: **rhizome**

Storage organ: **rhizome, tuft**

Type of clonal growth organ: **epigeogenous rhizome**

Freely dispersible organs of clonal growth: **absent**

Shoot life span (cyclicality): **dicyclic or polycyclic shoots prevailing**

Branching type of stem-derived organs of clonal growth: **sympodial**

Primary root: **absent**

Persistence of the clonal growth organ [year]: **4**

Number of clonal offspring: **6**

Lateral spreading distance by clonal growth [m]: **0.01**

Clonal index: **4**

Bud bank

Number of buds per shoot at the soil surface (root buds excluded): **5**

Number of buds per shoot at a depth of 0–10 cm (root buds excluded): **15**

Number of buds per shoot at a depth greater than 10 cm (root buds excluded): **0**

Size of the belowground bud bank (root buds excluded): **20**

Depth of the belowground bud bank (root buds excluded) [cm]: **4**

Number of buds per shoot at the soil surface (root buds included): **5**

Number of buds per shoot at a depth of 0–10 cm (root buds included): **15**

Number of buds per shoot at a depth greater than 10 cm (root buds included): **0**

Size of the belowground bud bank (root buds included): **20**

Depth of the belowground bud bank (root buds included) [cm]: **4**

Trophic mode

Parasitism and mycoheterotrophy: **autotrophic**

Carnivory: **non-carnivorous**

Symbiotic nitrogen fixation: **no nitrogen-fixing symbionts**

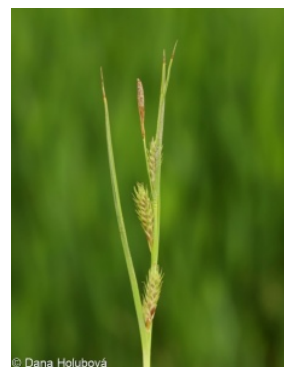
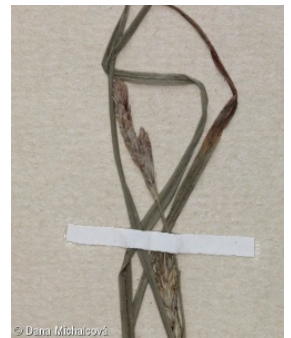
Karyology

Chromosome number (2n): **56**

Ploidy level (x): **2**

2C genome size [Mbp]: **467.3**

1Cx monoploid genome size [Mbp]: **233.65**



Genomic GC content: **34.6 %**

Taxon origin

Origin in the Czech Republic: **native**

Ecological indicator values

Ellenberg-type indicator values

Light indicator value: **8 - light plant, only exceptionally occurring at less than 40% of diffuse radiation incident in an open area**

Temperature indicator value: **7 - heat indicator, occurring in relatively warm lowlands**

Moisture indicator value: **7 - humidity indicator, focus on well moistened, but not wet soils**

Reaction indicator value: **7 - indicator of slightly acidic to slightly basic conditions, never occurring in very acidic conditions**

Nutrient indicator value: **6x - transition between values 5 and 7 (generalist)**

Salinity indicator value: **4 - α/β -mesohaline, mostly on soils with low to moderate salt content**

Indicator values for disturbance

Whole-community disturbance frequency indicator value: **-0.1**

Herb layer disturbance frequency indicator value: **-0.1**

Whole-community disturbance severity indicator value: **0.29**

Herb layer disturbance severity indicator value: **0.33**

Whole-community structure based disturbance indicator value: **0.54**

Herb layer structure-based disturbance indicator value: **0.6**

Habitat and sociology

Occurrence in habitats

4 Wetland and riverine herbaceous vegetation

4I Vegetation of nitrophilous annual hygrophilous herbs: **2 - optimum**

10 Saline vegetation

10I Inland saline meadows: **2 - optimum**

13 Anthropogenic vegetation

13A Annual vegetation of ruderal habitats: **1 - rare occurrence**

Affinity to the forest environment

Affinity to the forest environment in Thermophyticum: **0 - taxon that does not spontaneously occur in Czech forests**

Affinity to the forest environment in Mesophyticum and Oreophyticum: **0 - taxon that does not spontaneously occur in Czech forests**

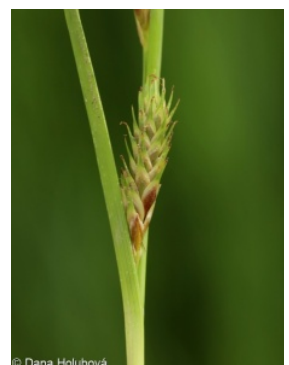
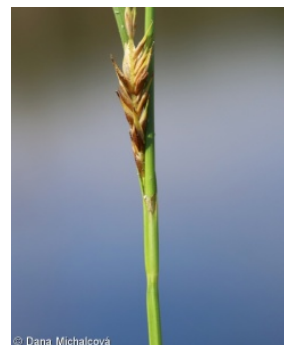
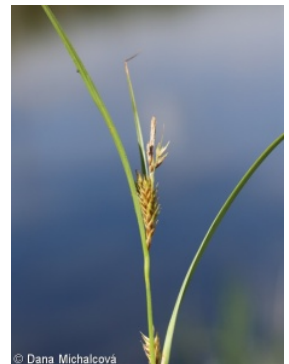
Diagnostic taxon

Diagnostic taxon of classes: [TC Festuco-Puccinellietea](#)

Diagnostic taxon of alliances: [TCB Juncion gerardii](#)

Diagnostic taxon of associations: [MCB01 Astero pannonici-Bolboschoenetum compacti](#), [TCB03 Agrostio stoloniferae-Juncetum ranarii](#)

Constant taxon



Constant taxon of associations: [TCB03 *Agrostio stoloniferae-Juncetum ranarii*](#)

Dominant taxon

Dominant taxon of associations: [TCB03 *Agrostio stoloniferae-Juncetum ranarii*](#)

Ecological specialization indices

Ecological specialization index for all vegetation types: **5.7**

Ecological specialization index for non-forest vegetation: **5.7**

Distribution and frequency

Floristic zone: **southern temperate, submeridional, meridional**

Floristic region: **Europe, Western Asia**

Continentality degree: **8**

Distribution range extension along the continentality gradient: **5**

Elevational belt in the Czech Republic: **lowlands, colline belt**

Occurrence frequency in the basic grid mapping cells and quadrants of the basic grid mapping cells: **49**

taxon.data.freq_in_quad: **108**

Commonness in vegetation plots from the Czech Republic

Occurrence frequency in vegetation plots: **0.1 %**

Occurrence frequency in vegetation plots with a cover above 5%: **35.5 %**

Occurrence frequency in vegetation plots with a cover above 25%: **16.1 %**

Occurrence frequency in vegetation plots with a cover above 50%: **9.7 %**

Mean percentage cover in vegetation plots: **12.8 %**

Maximum percentage cover in vegetation plots: **63 %**

Number of habitats with taxon occurrence in the Czech Republic

Number of narrow habitats in which the taxon occurs: **3**

Number of narrow habitats in which the taxon has its optimum: **2**

Number of broad habitats in which the taxon occurs: **3**

Number of broad habitats in which the taxon has its optimum: **2**

Threats and protection

Red List 2017 (national categories): **C2t - endangered taxon, declining**

Red List 2017 (IUCN categories): **EN - endangered**

Legal protection: **endangered taxon**

