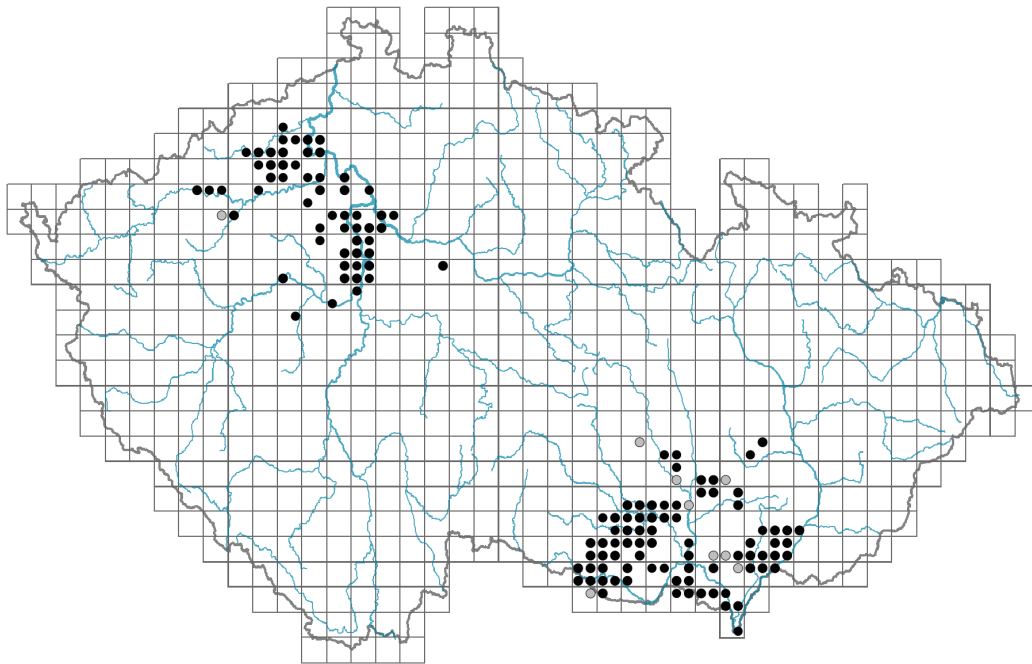


# Carex supina

## Distribution



### Map info

● revised records

○ unrevised records

On the map are not visualized records without the coordinates and records marked as incorrect or doubtful.



## Habitus and growth type

Height [m]: **0.05-0.25**

Growth form: **clonal herb**

Life form: **hemicryptophyte (geophyte)**

Life strategy: **CSR - competitor/stress-tolerator/ruderal**

## Leaf

Leaf presence and metamorphosis: **leaves present, not modified**

Leaf arrangement (phyllotaxis): **alternate**

Leaf shape: **simple - entire**

Stipules: **absent**

Petiole: **absent**

Leaf life span: **summer green**

Leaf anatomy: **scleromorphic**



## Flower

Flowering period [month]: **April-May**

Flowering phase: **3 Prunus avium-Ranunculus auricomus (end of early spring)**

Flower colour: **brown**

Perianth type: **flower achlamydeous**

Inflorescence type: **spica e spiculis composita**



Dicliny: **monoecious**

Generative reproduction type: **mixed mating**

Pollination syndrome: **wind-pollination**

## Fruit, seed and dispersal

Fruit type: **dry fruit - nut enclosed in an utricle**

Fruit colour: **brown**

Reproduction type: **by seed/spores and vegetatively**

Dispersal unit (diaspore): **fruit, infrutescence or its part**

Dispersal strategy: **Allium (mainly autochory)**

Myrmecochory: **non-myrmecochorous (a)**

## Belowground organs and clonality

Shoot metamorphosis: **stolon, rhizome**

Storage organ: **stolon, rhizome**

Type of clonal growth organ: **hypogeogenous rhizome**

Freely dispersible organs of clonal growth: **absent**

Shoot life span (cyclicity): **dicyclic or polycyclic shoots prevailing**

Branching type of stem-derived organs of clonal growth: **sympodial**

Primary root: **absent**

Persistence of the clonal growth organ [year]: **4**

Number of clonal offspring: **2.3**

Lateral spreading distance by clonal growth [m]: **0.07**

Clonal index: **4**

## Bud bank

Number of buds per shoot at the soil surface (root buds excluded): **5**

Number of buds per shoot at a depth of 0–10 cm (root buds excluded): **15**

Number of buds per shoot at a depth greater than 10 cm (root buds excluded): **0**

Size of the belowground bud bank (root buds excluded): **20**

Depth of the belowground bud bank (root buds excluded) [cm]: **4**

Number of buds per shoot at the soil surface (root buds included): **5**

Number of buds per shoot at a depth of 0–10 cm (root buds included): **15**

Number of buds per shoot at a depth greater than 10 cm (root buds included): **0**

Size of the belowground bud bank (root buds included): **20**

Depth of the belowground bud bank (root buds included) [cm]: **4**

## Trophic mode

Parasitism and mycoheterotrophy: **autotrophic**

Carnivory: **non-carnivorous**

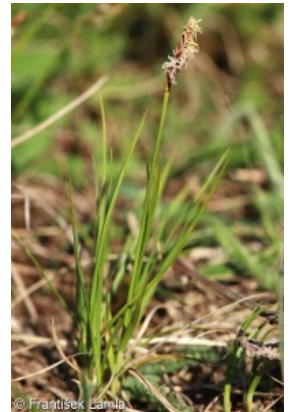
Symbiotic nitrogen fixation: **no nitrogen-fixing symbionts**

## Karyology

Chromosome number (2n): **37**

Ploidy level (x): **2**

2C genome size [Mbp]: **782.08**



1Cx monoploid genome size [Mbp]: **391.04**

Genomic GC content: **36.3 %**

## Taxon origin

Origin in the Czech Republic: **native**

## Ecological indicator values

### Ellenberg-type indicator values

Light indicator value: **9 - full light plant, occurring only in fully irradiated places, not at less than 50% of diffuse radiation incident in an open area**

Temperature indicator value: **7 - heat indicator, occurring in relatively warm lowlands**

Moisture indicator value: **2 - transition between values 1 and 3**

Reaction indicator value: **7 - indicator of slightly acidic to slightly basic conditions, never occurring in very acidic conditions**

Nutrient indicator value: **2 - transition between values 1 and 3**

Salinity indicator value: **0 - not salt tolerant, glycophyte**

### Indicator values for disturbance

Whole-community disturbance frequency indicator value: **-0.48**

Herb layer disturbance frequency indicator value: **-0.05**

Whole-community disturbance severity indicator value: **0.22**

Herb layer disturbance severity indicator value: **0.27**

Whole-community structure based disturbance indicator value: **0.53**

Herb layer structure-based disturbance indicator value: **0.63**

## Habitat and sociology

### Occurrence in habitats

#### 8 Dry grasslands

8A Hercynian dry grasslands on rock outcrops: **2 - optimum**

8C Narrow-leaved sub-continental steppes: **2 - optimum**

8E Acidophilous dry grasslands: **2 - optimum**

8F Thermophilous forest fringe vegetation: **1 - rare occurrence**

#### 9 Sand grasslands and rock-outcrop vegetation

9B Open vegetation of acidic sands: **2 - optimum**

9C Festuca grasslands on acidic sands: **2 - optimum**

9D Pannonian sand steppes: **2 - optimum**

9E Acidophilous vegetation of spring therophytes and succulents: **1 - rare occurrence**

9F Basiphilous vegetation of spring therophytes and succulents: **1 - rare occurrence**

#### 12 Forests

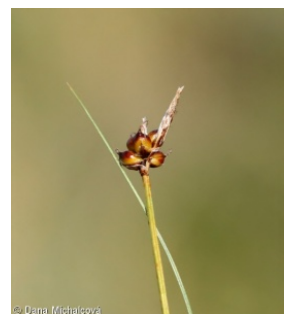
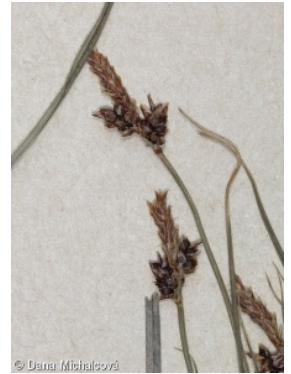
12W Pine and larch plantations: **1 - rare occurrence**

### Affinity to the forest environment

Affinity to the forest environment in Thermophyticum: **2.2 - taxon occurring partly in the forest, but mainly in open vegetation**

### Diagnostic taxon

Diagnostic taxon of classes: **[TG Festucetea vaginatae](#)**



Diagnostic taxon of alliances: [TGA \*Festucion vaginatae\*](#), [THD \*Festucion valesiaca\*](#)  
 Diagnostic taxon of associations: [TFC02 \*Erysimo diffusii-Agrostietum capillaris\*](#),  
[TGA01 \*Diantho serotini-Festucetum vaginatae\*](#), [THA04 \*Helichryso arenarii-Festucetum pallentis\*](#),  
[THD01 \*Festuco valesiaca-Stipetum capillatae\*](#), [THD06 \*Astragalo exscapi-Crambetum tatariae\*](#), [THG02 \*Avenulo pratensis-Festucetum valesiaca\*](#)

Constant taxon

Constant taxon of classes: [TG \*Festucetea vaginatae\*](#)

Constant taxon of alliances: [TGA \*Festucion vaginatae\*](#)

Constant taxon of associations: [TGA01 \*Diantho serotini-Festucetum vaginatae\*](#),  
[THA04 \*Helichryso arenarii-Festucetum pallentis\*](#)

Ecological specialization indices

Ecological specialization index for all vegetation types: **5.7**

Ecological specialization index for non-forest vegetation: **5.6**

Colonization ability

Index of colonization success (ICS): **3**

Index of colonization potential (ICP): **2**

Optimum successional age [years]: **25**

## Distribution and frequency

Floristic zone: **northern temperate, southern temperate, submeridional, meridional**

Floristic region: **Europe, Western Asia**

Continental degree: **8**

Distribution range extension along the continentality gradient: **6**

Elevational belt in the Czech Republic: **lowlands, colline belt**

Occurrence frequency in the basic grid mapping cells and quadrants of the basic grid mapping cells: **77**

taxon.data.freq\_in\_quad: 152

Commonness in vegetation plots from the Czech Republic

Occurrence frequency in vegetation plots: **0.3 %**

Occurrence frequency in vegetation plots with a cover above 5%: **11 %**

Occurrence frequency in vegetation plots with a cover above 25%: **0 %**

Occurrence frequency in vegetation plots with a cover above 50%: **0 %**

Mean percentage cover in vegetation plots: **3.6 %**

Maximum percentage cover in vegetation plots: **18 %**

Number of habitats with taxon occurrence in the Czech Republic

Number of narrow habitats in which the taxon occurs: **10**

Number of narrow habitats in which the taxon has its optimum: **6**

Number of broad habitats in which the taxon occurs: **3**

Number of broad habitats in which the taxon has its optimum: **2**

## Threats and protection

Red List 2017 (national categories): **C3 - vulnerable taxon**

Red List 2017 (IUCN categories): **NT - near threatened**

Legal protection: **not protected by law**

