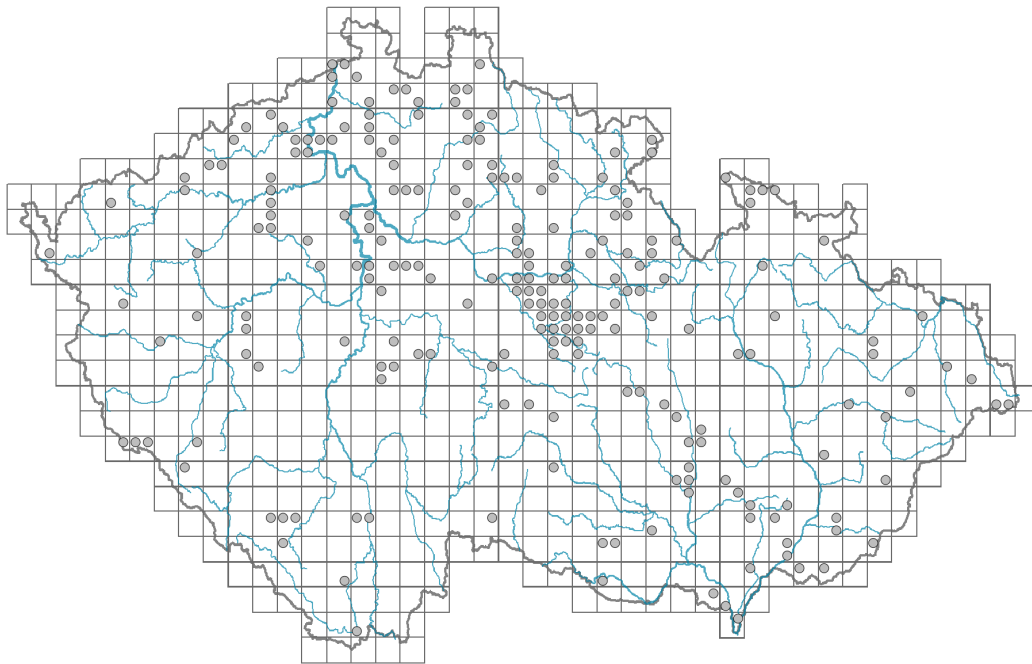


Castanea sativa

Distribution



© Petr Vezal

Map info

● revised records

○ unrevised records

On the map are not visualized records without the coordinates and records marked as incorrect or doubtful.



Habitus and growth type

Height [m]: **30**

Growth form: **tree**

Life form: **macrophanerophyte**

Life strategy: **C - competitor**

Life strategy (Pierce method based on leaf traits): **CS**

Life strategy (Pierce method, C-score): **36.2 %**

Life strategy (Pierce method, S-score): **56.6 %**

Life strategy (Pierce method, R-score): **7.2 %**

Leaf

Leaf presence and metamorphosis: **leaves present, not modified**

Leaf arrangement (phyllotaxis): **alternate**

Leaf shape: **simple - entire**

Stipules: **present**

Petiole: **present**

Leaf life span: **summer green**

Leaf deciduousness in woody plants: **winter deciduous**

Leaf anatomy: **mesomorphic**

Functional leaf type in woody plants: **broad deciduous or semi-deciduous**

Flower

Flowering period [month]: **June-July**

Flowering phase: **8 Clematis vitalba-Galium sylvaticum (mid-summer)**

Flower colour: **green**

Perianth type: **reduced**

Perianth fusion: **reduced**

Inflorescence type: **amentum e floribus masculis, dichasium e floribus femineis compositum**

Dicliny: **monoecious**

Generative reproduction type: **allogamy**

Pollination syndrome: **wind-pollination, insect-pollination**

Fruit, seed and dispersal

Fruit type: **dry fruit - achene/cypsela/samara**

Fruit colour: **brown**

Reproduction type: **only by seed/spores**

Dispersal unit (diaspore): **seed, fruit, infrutescence or its part**

Dispersal strategy: **Cornus (mainly autochory and endozoochory)**

Myrmecochory: **non-myrmecochorous (b)**

Belowground organs and clonality

Position of root buds: **lateral roots**

Role of root buds in life-history of a plant: **regenerative**

Bud bank

Number of buds per shoot at the soil surface (root buds excluded): **0**

Number of buds per shoot at a depth of 0–10 cm (root buds excluded): **0**

Number of buds per shoot at a depth greater than 10 cm (root buds excluded): **0**

Size of the belowground bud bank (root buds excluded): **0**

Number of buds per shoot at the soil surface (root buds included): **0**

Number of buds per shoot at a depth of 0–10 cm (root buds included): **15**

Number of buds per shoot at a depth greater than 10 cm (root buds included): **15**

Size of the belowground bud bank (root buds included): **30**

Depth of the belowground bud bank (root buds included) [cm]: **10**

Trophic mode

Parasitism and mycoheterotrophy: **autotrophic**

Carnivory: **non-carnivorous**

Symbiotic nitrogen fixation: **no nitrogen-fixing symbionts**

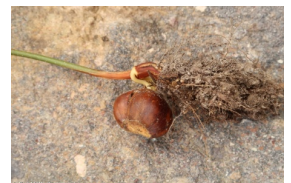
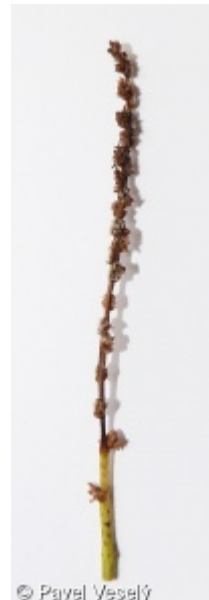
Taxon origin

Origin in the Czech Republic: **archaeophyte/neophyte**

Invasion status: **casual**

Geographic origin: **Europe, Mediterranean**

Period of introduction: **Late Middle Ages and Early Modern Period (merged)**



category, 1200-1800)

Introduction pathway: **intentional - ornamental, intentional - nature, intentional - crops, intentional - forest**

Ecological indicator values

Ellenberg-type indicator values

Light indicator value: **5 - semi-shade plant, only exceptionally occurring in full light, but usually at more than 10% of the diffuse radiation incident in an open area**

Temperature indicator value: **8 - transition between values 7 and 9**

Moisture indicator value: **5x - indicator of fresh soils, focus on soils of average moisture, missing on wet and on soils that frequently dry out (generalist)**

Reaction indicator value: **4 - transition between values 3 and 5**

Nutrient indicator value: **4x - transition between values 3 and 5 (generalist)**

Salinity indicator value: **0 - not salt tolerant, glycophyte**

Habitat and sociology

Occurrence in habitats

11 Heathlands and scrub

11R Scrub and pioneer woodland of forests clearings: **1 - rare occurrence**

12 Forests

12C Oak-hornbeam forests: **2 - optimum**

12K Acidophilous oak forests: **1 - rare occurrence**

12U Plantations of broad-leaved non-native trees: **2 - optimum**

Affinity to the forest environment

Affinity to the forest environment in Thermophyticum: **0 - taxon that does not spontaneously occur in Czech forests**

Affinity to the forest environment in Mesophyticum and Oreophyticum: **0 - taxon that does not spontaneously occur in Czech forests**

Distribution and frequency

Floristic zone: **submeridional, meridional**

Floristic region: **Europe**

Continentality degree: **6**

Distribution range extension along the continentality gradient: **2**

Elevational belt in the Czech Republic: **lowlands, colline belt**

Occurrence frequency in the basic grid mapping cells and quadrants of the basic grid mapping cells: **163**

taxon.data.freq_in_quad: **225**

Number of habitats with taxon occurrence in the Czech Republic

Number of narrow habitats in which the taxon occurs: **4**

Number of narrow habitats in which the taxon has its optimum: **2**

Number of broad habitats in which the taxon occurs: **2**

Number of broad habitats in which the taxon has its optimum: **1**



Threats and protection

Red List 2017 (national categories): **taxon is not on the Red List**

Red List 2017 (IUCN categories): **LC(NA) - least concern (taxon is not on the Red List)**

Legal protection: **not protected by law**



