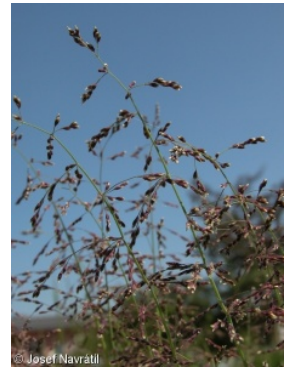
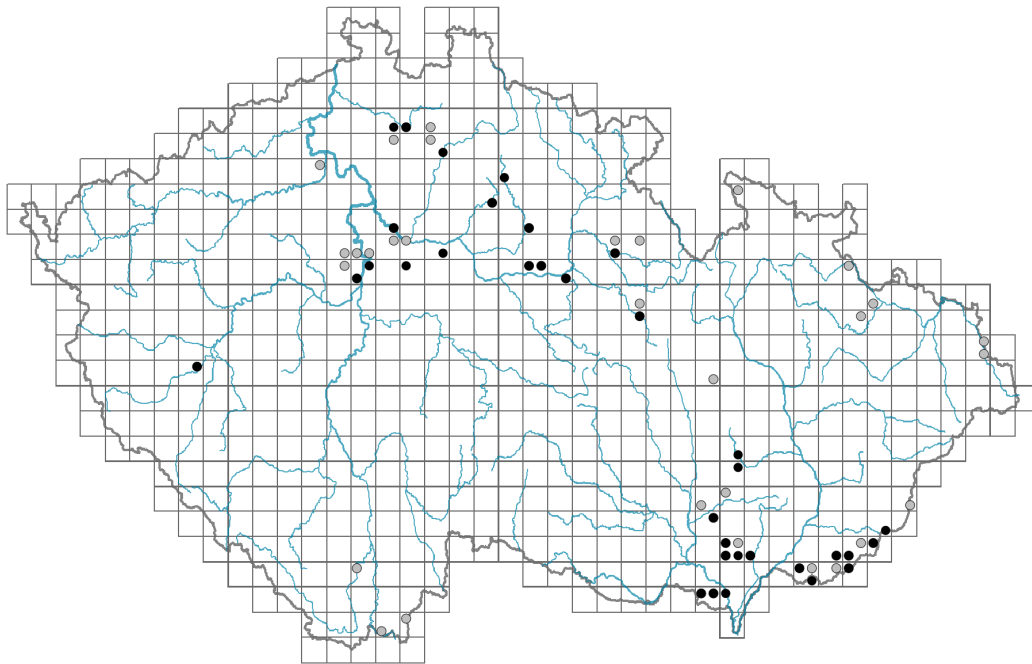


Catabrosa aquatica

Distribution



Map info

- revised records
- unrevised records

On the map are not visualized records without the coordinates and records marked as incorrect or doubtful.



Habitus and growth type

Height [m]: **0.2-0.5**

Growth form: **clonal herb**

Life form: **therophyte (hydrophyte)**

Life strategy: **CS - competitor/stress-tolerator**

Life strategy (Pierce method based on leaf traits): **R/CR**

Life strategy (Pierce method, C-score): **20.8 %**

Life strategy (Pierce method, S-score): **0 %**

Life strategy (Pierce method, R-score): **79.2 %**

Leaf

Leaf presence and metamorphosis: **leaves present, not modified**

Leaf arrangement (phyllotaxis): **alternate**

Leaf shape: **simple - entire**

Stipules: **absent**

Petiole: **absent**

Leaf life span: **evergreen**

Leaf anatomy: **mesomorphic, helomorphic**

Flower

Flowering period [month]: **June-August**



Flower colour: **green**
 Perianth type: **reduced**
 Perianth fusion: **reduced**
 Inflorescence type: **panicula e spiculis composita**
 Dicliny: **synoecious**
 Pollination syndrome: **wind-pollination**

Fruit, seed and dispersal

Fruit type: **dry fruit - caryopsis**
 Fruit colour: **brown**
 Reproduction type: **by seed/spores and vegetatively**
 Dispersal unit (diaspore): **fruit, infrutescence or its part**
 Dispersal strategy: **Sparganium (mainly autochory and hydrochory)**
 Myrmecochory: **non-myrmecochorous (b)**

Belowground organs and clonality

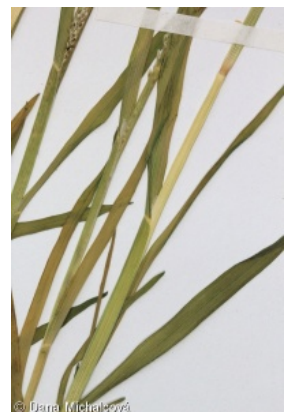
Shoot metamorphosis: **stolon**
 Storage organ: **stolon, tuft**
 Type of clonal growth organ: **hypogeogenous rhizome**
 Freely dispersible organs of clonal growth: **absent**
 Shoot life span (cyclicality): **dicyclic or polycyclic shoots prevailing**
 Branching type of stem-derived organs of clonal growth: **sympodial**
 Primary root: **absent**
 Persistence of the clonal growth organ [year]: **4**
 Number of clonal offspring: **1**
 Lateral spreading distance by clonal growth [m]: **0.07**
 Clonal index: **4**

Bud bank

Number of buds per shoot at the soil surface (root buds excluded): **5**
 Number of buds per shoot at a depth of 0–10 cm (root buds excluded): **15**
 Number of buds per shoot at a depth greater than 10 cm (root buds excluded): **0**
 Size of the belowground bud bank (root buds excluded): **20**
 Depth of the belowground bud bank (root buds excluded) [cm]: **4**
 Number of buds per shoot at the soil surface (root buds included): **5**
 Number of buds per shoot at a depth of 0–10 cm (root buds included): **15**
 Number of buds per shoot at a depth greater than 10 cm (root buds included): **0**
 Size of the belowground bud bank (root buds included): **20**
 Depth of the belowground bud bank (root buds included) [cm]: **4**

Trophic mode

Parasitism and mycoheterotrophy: **autotrophic**
 Carnivory: **non-carnivorous**
 Symbiotic nitrogen fixation: **no nitrogen-fixing symbionts**



Karyology

Chromosome number (2n): **20**

Ploidy level (x): **2**

2C genome size [Mbp]: **5005.68**

1Cx monoploid genome size [Mbp]: **2502.84**

Genomic GC content: **47.3 %**

Taxon origin

Origin in the Czech Republic: **native**

Ecological indicator values

Ellenberg-type indicator values

Light indicator value: **8 - light plant, only exceptionally occurring at less than 40% of diffuse radiation incident in an open area**

Temperature indicator value: **5 - moderate heat indicator, occurring from lowland to montane belt, mainly in submontane-temperate areas**

Moisture indicator value: **9 - wetness indicator, focus on often soaked, poorly aerated soils**

Reaction indicator value: **7 - indicator of slightly acidic to slightly basic conditions, never occurring in very acidic conditions**

Nutrient indicator value: **7 - occurring at nutrient-rich sites more often than at average sites and only exceptionally at poor sites**

Salinity indicator value: **1 - salt tolerant, mostly on low-salt to salt-free soils, but occasionally on slightly salty soils**

Habitat and sociology

Occurrence in habitats

4 Wetland and riverine herbaceous vegetation

4E Reed vegetation of brooks: **2 - optimum**

4G Tall-sedge beds: **1 - rare occurrence**

5 Vegetation of springs and mires

5B Lowland to montane soft-water springs: **1 - rare occurrence**

6 Meadows and mesic pastures

6G Vegetation of wet disturbed soils: **2 - optimum**

Affinity to the forest environment

Affinity to the forest environment in Thermophyticum: **0 - taxon that does not spontaneously occur in Czech forests**

Affinity to the forest environment in Mesophyticum and Oreophyticum: **0 - taxon that does not spontaneously occur in Czech forests**

Colonization ability

Index of colonization success (ICS): **1**

Distribution and frequency

Floristic zone: **meridional**



Floristic region: **Europe, Asia, Americas**

Distribution range extension along the continentality gradient: **8**

Elevational belt in the Czech Republic: **lowlands, colline belt, submontane belt**

Occurrence frequency in the basic grid mapping cells and quadrants of the basic grid mapping cells: 53

taxon.data.freq_in_quad: 66

Commonness in vegetation plots from the Czech Republic

Occurrence frequency in vegetation plots: **0 %**

Occurrence frequency in vegetation plots with a cover above 5%: **100 %**

Occurrence frequency in vegetation plots with a cover above 25%: **100 %**

Occurrence frequency in vegetation plots with a cover above 50%: **100 %**

Mean percentage cover in vegetation plots: **88 %**

Maximum percentage cover in vegetation plots: **88 %**

Number of habitats with taxon occurrence in the Czech Republic

Number of narrow habitats in which the taxon occurs: **4**

Number of narrow habitats in which the taxon has its optimum: **2**

Number of broad habitats in which the taxon occurs: **3**

Number of broad habitats in which the taxon has its optimum: **2**

Threats and protection

Red List 2017 (national categories): **C1t - critically threatened taxon, declining**

Red List 2017 (IUCN categories): **CR - critically endangered**

Legal protection: **critically threatened taxon**