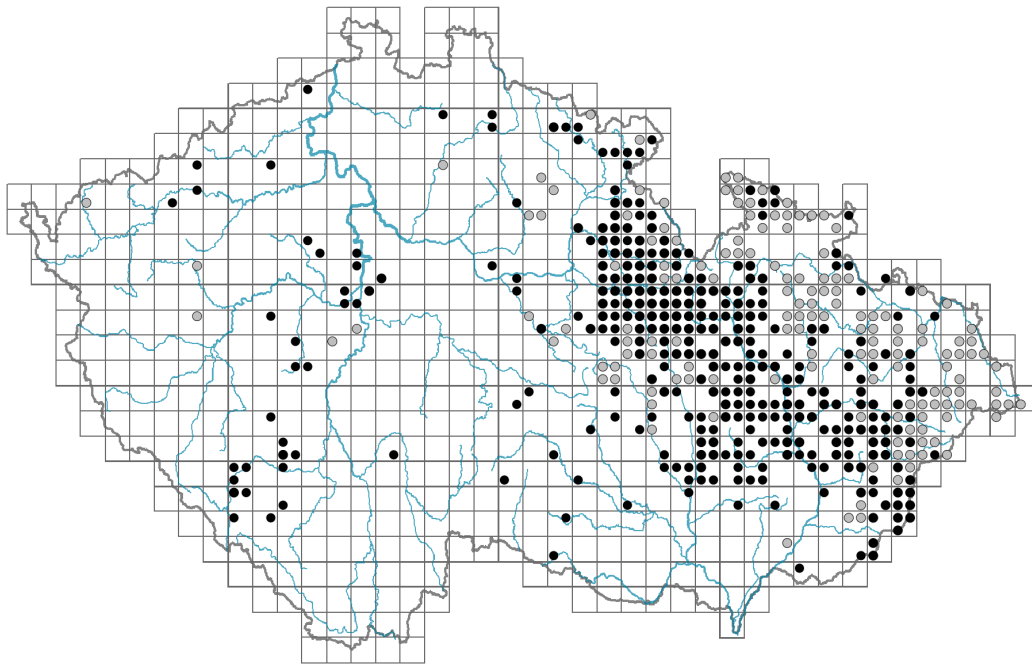


Centaurea oxylepis

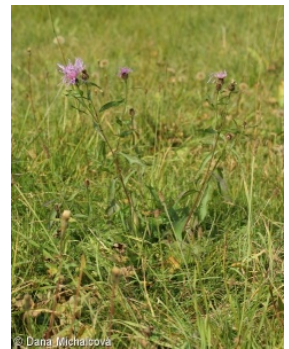
Distribution



Map info

- revised records
- unrevised records

On the map are not visualized records without the coordinates and records marked as incorrect or doubtful.



Habitus and growth type

Height [m]: **0.3-1**

Growth form: **clonal herb**

Life form: **hemicryptophyte**

Leaf

Leaf presence and metamorphosis: **leaves present, not modified**

Leaf arrangement (phyllotaxis): **alternate**

Leaf shape: **simple - entire**

Stipules: **absent**

Petiole: **both present and absent**

Flower

Flowering period [month]: **July-August**

Flower colour: **pink-violet**

Flower symmetry: **actinomorphic, zygomorphic**

Perianth type: **calyx reduced, corolla present**

Perianth fusion: **fused**

Shape of the sympetalous corolla or syntepalous perianth: **funnel-shaped, tubular**

Calyx fusion: **pappus**

Inflorescence type: **corymbothsus ex anthodiis compositus**

Fruit, seed and dispersal

Fruit type: **dry fruit - achene/cypsela/samara**

Fruit colour: **brown**

Dispersal unit (diaspore): **fruit, infrutescence or its part**

Dispersal strategy: **Allium (mainly autochory)**

Myrmecochory: **myrmecochorous**

Trophic mode

Parasitism and mycoheterotrophy: **autotrophic**

Carnivory: **non-carnivorous**

Symbiotic nitrogen fixation: **no nitrogen-fixing symbionts**

Karyology

Chromosome number (2n): **36**

Ploidy level (x): **4**

2C genome size [Mbp]: **3245.84**

1Cx monoploid genome size [Mbp]: **811.46**

Genomic GC content: **39 %**

Taxon origin

Origin in the Czech Republic: **native**

Ecological indicator values

Ellenberg-type indicator values

Light indicator value: **7 - half-light plant, mostly occurring at full light, but also in the shade up to about 30% of diffuse radiation incident in an open area**

Temperature indicator value: **6 - transition between values 5 and 7**

Moisture indicator value: **5 - indicator of fresh soils, focus on soils of average moisture, missing on wet and on soils that frequently dry out**

Reaction indicator value: **5 - indicator of moderate acidity, occurring rarely in strongly acidic as well as in neutral to alkaline conditions**

Nutrient indicator value: **4 - transition between values 3 and 5**

Salinity indicator value: **0 - not salt tolerant, glycophyte**

Habitat and sociology

Occurrence in habitats

6 Meadows and mesic pastures

6A Mesic Arrhenatherum meadows: **2 - optimum**

6B Montane mesic meadows: **1 - rare occurrence**

6C Pastures and park grasslands: **1 - rare occurrence**

6D Alluvial meadows of lowland rivers: **1 - rare occurrence**

6E Wet Cirsium meadows: **1 - rare occurrence**

6F Intermittently wet Molinia meadows: **1 - rare occurrence**



7 Acidophilous grasslands

7B Submontane Nardus grasslands: **1 - rare occurrence**

8 Dry grasslands

8D Broad-leaved dry grasslands: **2 - optimum**

8E Acidophilous dry grasslands: **1 - rare occurrence**

8F Thermophilous forest fringe vegetation: **2 - optimum**

11 Heathlands and scrub

11A Dry lowland to subalpine heathlands: **1 - rare occurrence**

11L Tall mesic and xeric shrub: **1 - rare occurrence**

13 Anthropogenic vegetation

13D Perennial thermophilous ruderal vegetation: **1 - rare occurrence**

Affinity to the forest environment

Affinity to the forest environment in Thermophyticum: **0 - taxon that does not spontaneously occur in Czech forests**

Affinity to the forest environment in Mesophyticum and Oreophyticum: **0 - taxon that does not spontaneously occur in Czech forests**

Distribution and frequency

Elevational belt in the Czech Republic: **lowlands, colline belt, submontane belt**

Occurrence frequency in the basic grid mapping cells and quadrants of the basic grid mapping cells: 251

taxon.data.freq_in_quad: 578

Number of habitats with taxon occurrence in the Czech Republic

Number of narrow habitats in which the taxon occurs: **13**

Number of narrow habitats in which the taxon has its optimum: **3**

Number of broad habitats in which the taxon occurs: **5**

Number of broad habitats in which the taxon has its optimum: **2**

Threats and protection

Red List 2017 (national categories): **C4a - near threatened taxon**

Red List 2017 (IUCN categories): **LC - least concern**

Legal protection: **not protected by law**