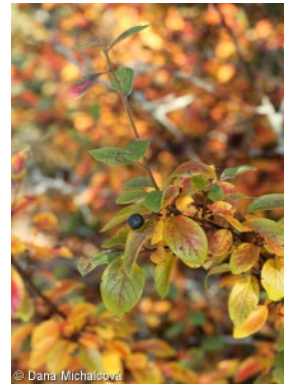
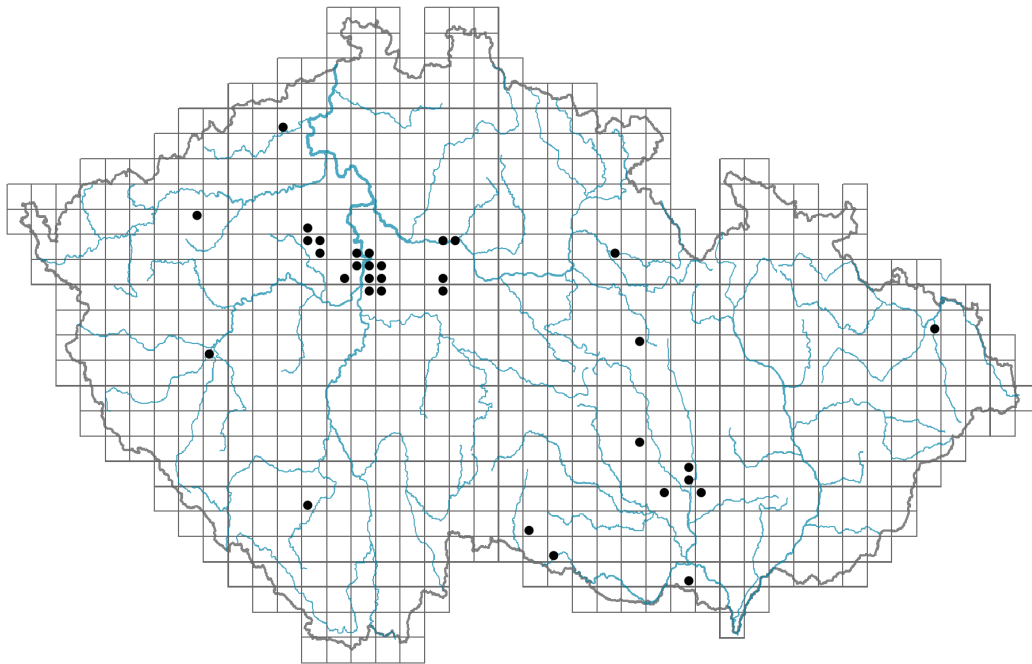


# *Cotoneaster acutifolius*

## Distribution



© Dana Michalčová

### Map info

● revised records

○ unrevised records

On the map are not visualized records without the coordinates and records marked as incorrect or doubtful.

## Habitus and growth type

Growth form: **shrub**

Life form: **nanophanerophyte**

## Leaf

Leaf presence and metamorphosis: **leaves present, not modified**

Leaf arrangement (phyllotaxis): **alternate**

Leaf shape: **simple - entire**

Stipules: **present**

Petiole: **present**

Leaf deciduousness in woody plants: **winter deciduous**

Functional leaf type in woody plants: **broad deciduous or semi-deciduous**

## Flower

Flower colour: **white, pink**

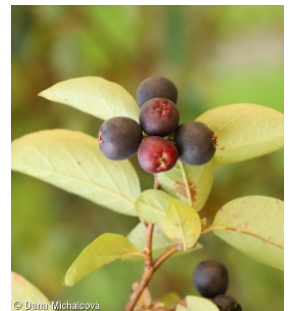
Flower symmetry: **actinomorphic**

Perianth type: **calyx and corolla**

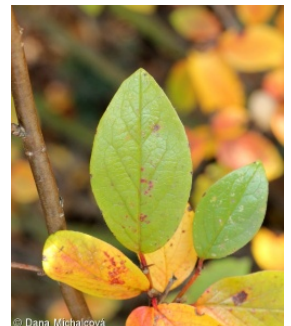
Perianth fusion: **free**

Calyx fusion: **hypanthium**

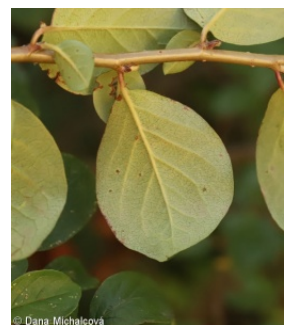
Inflorescence type: **corymbus**



© Dana Michalčová



© Dana Michalčová



© Dana Michalčová

## Fruit, seed and dispersal

Fruit type: **fleshy fruit - pome**

Dispersal unit (diaspore): **seed, fruit, infructescence or its part**

Dispersal strategy: **Cornus (mainly autochory and endozoochory)**

Myrmecochory: **non-myrmecochorous (b)**

## Trophic mode

Parasitism and mycoheterotrophy: **autotrophic**

Carnivory: **non-carnivorous**

Symbiotic nitrogen fixation: **no nitrogen-fixing symbionts**

## Taxon origin

Origin in the Czech Republic: **neophyte**

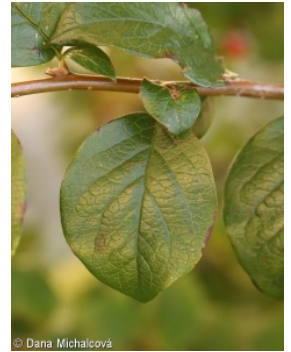
Invasion status: **casual**

Geographic origin: **Asia**

Year of the first record in the wild: **1954**

Period of introduction: **Recent Past (1950-2000)**

Introduction pathway: **intentional - ornamental**



## Habitat and sociology

Affinity to the forest environment

Affinity to the forest environment in Thermophyticum: **0 - taxon that does not spontaneously occur in Czech forests**

Affinity to the forest environment in Mesophyticum and Oreophyticum: **0 - taxon that does not spontaneously occur in Czech forests**

## Threats and protection

Red List 2017 (national categories): **taxon is not on the Red List**

Red List 2017 (IUCN categories): **LC(NA) - least concern (taxon is not on the Red List)**

Legal protection: **not protected by law**