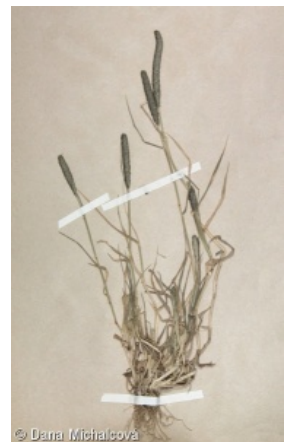
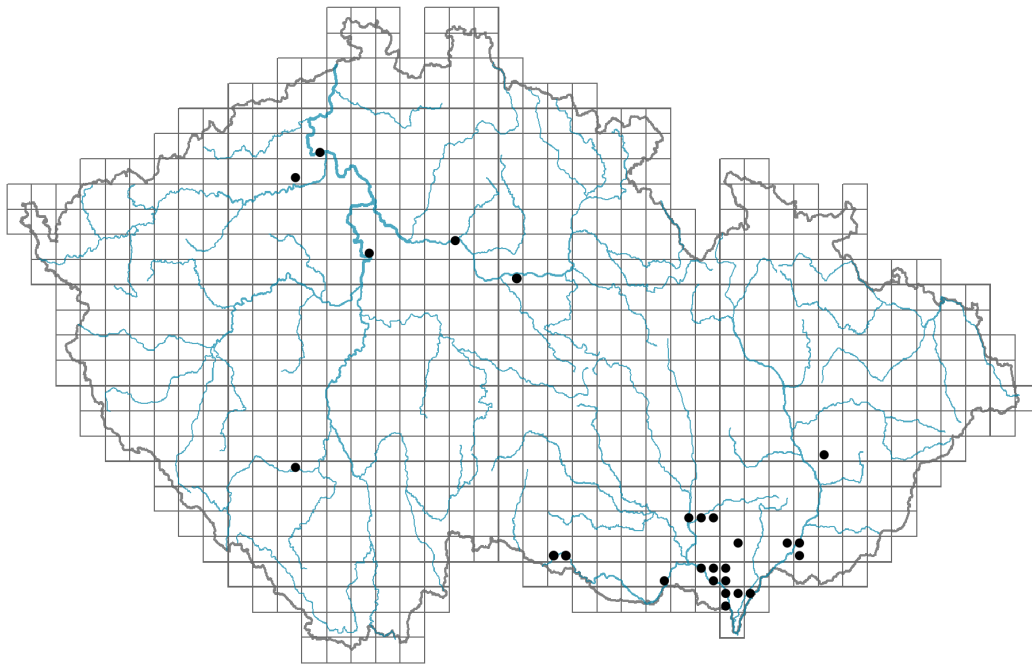


# *Crypsis alopecuroides*

## Distribution



© Dana Michalčová

### Map info

● revised records

○ unrevised records

On the map are not visualized records without the coordinates and records marked as incorrect or doubtful.

## Habitus and growth type

Height [m]: **0.05-0.3**

Growth form: **annual herb**

Life form: **therophyte**

## Leaf

Leaf presence and metamorphosis: **leaves present, not modified**

Leaf arrangement (phyllotaxis): **alternate**

Leaf shape: **simple - entire**

Stipules: **absent**

Petiole: **absent**

## Flower

Flowering period [month]: **July-September**

Flower colour: **green**

Perianth type: **reduced**

Perianth fusion: **reduced**

Inflorescence type: **pseudospica e spiculis composita**

## Fruit, seed and dispersal

Fruit type: **dry fruit - caryopsis**



© Dana Michalčová



© Dana Michalčová

Dispersal unit (diaspore): **fruit, infrutescence or its part**

Dispersal strategy: **Allium (mainly autochory)**

Myrmecochory: **non-myrmecochorous (b)**

## **Trophic mode**

Parasitism and mycoheterotrophy: **autotrophic**

Carnivory: **non-carnivorous**

Symbiotic nitrogen fixation: **no nitrogen-fixing symbionts**

## **Taxon origin**

Origin in the Czech Republic: **native**

## **Ecological indicator values**

Ellenberg-type indicator values

Light indicator value: **9 - full light plant, occurring only in fully irradiated places, not at less than 50% of diffuse radiation incident in an open area**

Temperature indicator value: **8 - transition between values 7 and 9**

Moisture indicator value: **7 - humidity indicator, focus on well moistened, but not wet soils**

Reaction indicator value: **7 - indicator of slightly acidic to slightly basic conditions, never occurring in very acidic conditions**

Nutrient indicator value: **7 - occurring at nutrient-rich sites more often than at average sites and only exceptionally at poor sites**

Salinity indicator value: **6 -  $\alpha$ -meso/polyhaline, on soils with moderate to high salt content**

## **Habitat and sociology**

Affinity to the forest environment

Affinity to the forest environment in Thermophyticum: **0 - taxon that does not spontaneously occur in Czech forests**

Affinity to the forest environment in Mesophyticum and Oreophyticum: **0 - taxon that does not spontaneously occur in Czech forests**

## **Distribution and frequency**

Elevational belt in the Czech Republic: **lowlands, colline belt**

Occurrence frequency in the basic grid mapping cells and quadrants of the basic grid mapping cells: 19

taxon.data.freq\_in\_quad: 27

Commonness in vegetation plots from the Czech Republic

Occurrence frequency in vegetation plots: **0 %**

Occurrence frequency in vegetation plots with a cover above 5%: **50 %**

Occurrence frequency in vegetation plots with a cover above 25%: **0 %**

Occurrence frequency in vegetation plots with a cover above 50%: **0 %**

Mean percentage cover in vegetation plots: **10 %**

Maximum percentage cover in vegetation plots: **18 %**

## **Threats and protection**

Red List 2017 (national categories): **C1t - critically threatened taxon, declining**

Red List 2017 (IUCN categories): **CR - critically endangered**

Legal protection: **critically threatened taxon**