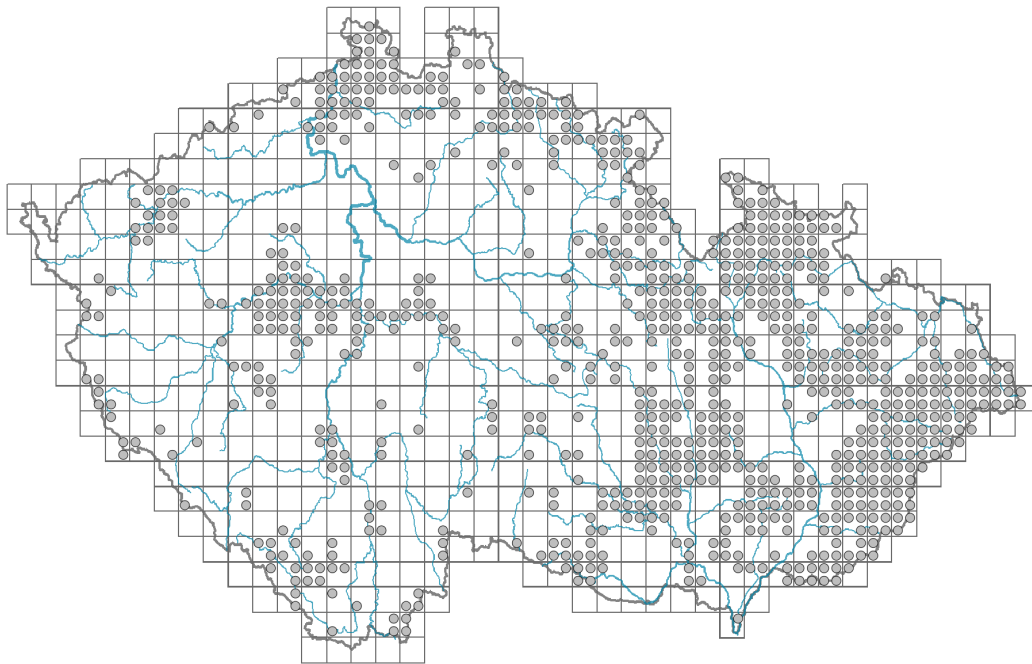


# *Dentaria bulbifera*

## Distribution



© Pavel Veselý

### Map info

● revised records

○ unrevised records

On the map are not visualized records without the coordinates and records marked as incorrect or doubtful.

## Habitus and growth type

Height [m]: **0.3-0.6**

Growth form: **clonal herb**

Life form: **geophyte**

Life strategy: **CSR - competitor/stress-tolerator/ruderal**

Life strategy (Pierce method based on leaf traits): **CR**

Life strategy (Pierce method, C-score): **40.3 %**

Life strategy (Pierce method, S-score): **0 %**

Life strategy (Pierce method, R-score): **59.7 %**

## Leaf

Leaf presence and metamorphosis: **leaves present, not modified**

Leaf arrangement (phyllotaxis): **alternate**

Leaf shape: **compound - imparipinnate**

Stipules: **absent**

Petiole: **present**

Leaf life span: **summer green**

Leaf anatomy: **hygromorphic**

## Flower

Flowering period [month]: **April-May**



© Jana Haluzová



© Aleš Nováček

Flowering phase: **4 Fagus sylvatica-Galeobdolon (start of mid-spring)**  
 Flower colour: **pink, pink-violet**  
 Flower symmetry: **actinomorphic**  
 Perianth type: **calyx and corolla**  
 Perianth fusion: **free**  
 Calyx fusion: **aposepalous**  
 Inflorescence type: **racemus**  
 Dicliny: **synoecious**  
 Generative reproduction type: **allogamy self-incompatibility**  
 Pollination syndrome: **insect-pollination**

### Fruit, seed and dispersal

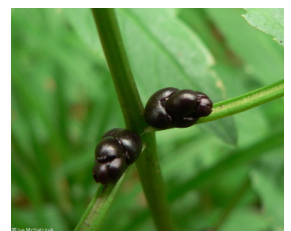
Fruit type: **dry fruit - siliqua**  
 Fruit colour: **brown**  
 Reproduction type: **mostly vegetatively, rarely by seed/spores**  
 Dispersal unit (diaspore): **seed, bulbil or tuber**  
 Dispersal strategy: **Allium (mainly autochory)**  
 Myrmecochory: **non-myrmecochorous (b)**

### Belowground organs and clonality

Shoot metamorphosis: **rhizome, bulbil**  
 Storage organ: **rhizome, bulbil**  
 Type of clonal growth organ: **hypogeogenous rhizome**  
 Freely dispersible organs of clonal growth: **present**  
 Shoot life span (cyclicality): **monocyclic shoots prevailing**  
 Branching type of stem-derived organs of clonal growth: **sympodial**  
 Primary root: **absent**  
 Persistence of the clonal growth organ [year]: **3.2**  
 Number of clonal offspring: **4.2**  
 Lateral spreading distance by clonal growth [m]: **0.13**  
 Clonal index: **3**  
**Bud bank**  
 Number of buds per shoot at the soil surface (root buds excluded): **2**  
 Number of buds per shoot at a depth of 0–10 cm (root buds excluded): **15**  
 Number of buds per shoot at a depth greater than 10 cm (root buds excluded): **0**  
 Size of the belowground bud bank (root buds excluded): **17**  
 Depth of the belowground bud bank (root buds excluded) [cm]: **5**  
 Number of buds per shoot at the soil surface (root buds included): **2**  
 Number of buds per shoot at a depth of 0–10 cm (root buds included): **15**  
 Number of buds per shoot at a depth greater than 10 cm (root buds included): **0**  
 Size of the belowground bud bank (root buds included): **17**  
 Depth of the belowground bud bank (root buds included) [cm]: **5**

### Trophic mode

Parasitism and mycoheterotrophy: **autotrophic**  
 Carnivory: **non-carnivorous**



Symbiotic nitrogen fixation: **no nitrogen-fixing symbionts**

## Karyology

Chromosome number (2n): **96**

Ploidy level (x): **12**

2C genome size [Mbp]: **3685.37**

1Cx monoploid genome size [Mbp]: **307.11**

Genomic GC content: **38.7 %**

## Taxon origin

Origin in the Czech Republic: **native**

## Ecological indicator values

Ellenberg-type indicator values

Light indicator value: **3 - shade plant, usually occurring where the incident radiation is less than 5% of that in an open area, but also at sunnier sites**

Temperature indicator value: **5 - moderate heat indicator, occurring from lowland to montane belt, mainly in submontane-temperate areas**

Moisture indicator value: **5 - indicator of fresh soils, focus on soils of average moisture, missing on wet and on soils that frequently dry out**

Reaction indicator value: **6 - transition between values 5 and 7**

Nutrient indicator value: **6 - transition between values 5 and 7**

Salinity indicator value: **0 - not salt tolerant, glycophyte**

Indicator values for disturbance

Whole-community disturbance frequency indicator value: **-1.97**

Herb layer disturbance frequency indicator value: **-0.7**

Whole-community disturbance severity indicator value: **0.25**

Herb layer disturbance severity indicator value: **0.07**

Whole-community structure based disturbance indicator value: **0.11**

Herb layer structure-based disturbance indicator value: **0.2**

## Habitat and sociology

Occurrence in habitats

5 Vegetation of springs and mires

5A Hard-water springs with tufa formation: **1 - rare occurrence**

5B Lowland to montane soft-water springs: **1 - rare occurrence**

8 Dry grasslands

8F Thermophilous forest fringe vegetation: **1 - rare occurrence**

11 Heathlands and scrub

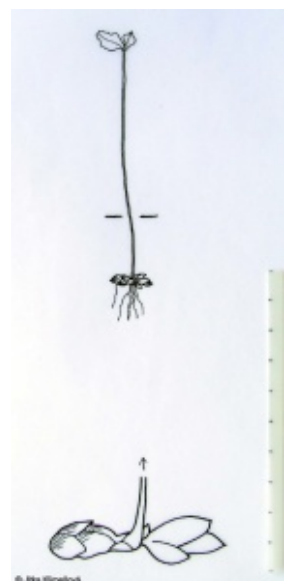
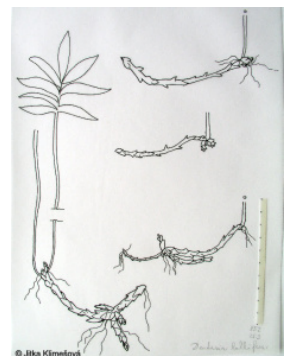
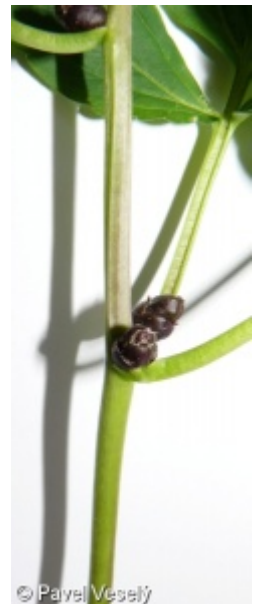
11L Tall mesic and xeric shrub: **1 - rare occurrence**

11R Scrub and pioneer woodland of forests clearings: **1 - rare occurrence**

12 Forests

12B Alluvial forests: **1 - rare occurrence**

12C Oak-hornbeam forests: **2 - optimum**



12D Ravine forests: **2 - optimum**

12E Herb-rich beech forests: **2 - optimum**

12F Limestone beech forests: **1 - rare occurrence**

12G Acidophilous beech forests: **1 - rare occurrence**

12H Peri-Alpidic basiphilous thermophilous oak forests: **1 - rare occurrence**

12I Sub-continental thermophilous oak forests: **1 - rare occurrence**

12J Acidophilous thermophilous oak forests: **1 - rare occurrence**

12U Plantations of broad-leaved non-native trees: **1 - rare occurrence**

12V Spruce plantations: **1 - rare occurrence**

12W Pine and larch plantations: **1 - rare occurrence**

13 Anthropogenic vegetation

13E Perennial nitrophilous herbaceous vegetation of mesic sites: **1 - rare occurrence**

13F Herbaceous vegetation of forests clearings and Rubus scrub: **2 - optimum**

Affinity to the forest environment

Affinity to the forest environment in Thermophyticum: **1.1 - taxon occurring mainly in the closed forest**

Affinity to the forest environment in Mesophyticum and Oreophyticum: **1.1 - taxon occurring mainly in the closed forest**

Diagnostic taxon

Diagnostic taxon of classes: [LB \*Carpino-Fagetea\*](#)

Diagnostic taxon of alliances: [LBC \*Fagion sylvaticae\*](#)

Diagnostic taxon of associations: [LBC01 \*Galio odorati-Fagetum sylvaticae\*](#), [LBC02 \*Mercuriali perennis-Fagetum sylvaticae\*](#), [LBC03 \*Carici pilosae-Fagetum sylvaticae\*](#)

Constant taxon

Constant taxon of alliances: [LBC \*Fagion sylvaticae\*](#)

Constant taxon of associations: [LBC01 \*Galio odorati-Fagetum sylvaticae\*](#), [LBC02 \*Mercuriali perennis-Fagetum sylvaticae\*](#), [LBC03 \*Carici pilosae-Fagetum sylvaticae\*](#)

Ecological specialization indices

Ecological specialization index for all vegetation types: **5.7**

Ecological specialization index for non-forest vegetation: **4.5**

Ecological specialization index for forest vegetation: **5.8**

Colonization ability

Index of colonization success (ICS): **3**

Index of colonization potential (ICP): **1**

Optimum successional age [years]: **20**

**Distribution and frequency**

Floristic zone: **northern temperate, southern temperate, submeridional**

Floristic region: **Europe**

Continental degree: **5**

Distribution range extension along the continentality gradient: **3**

Elevational belt in the Czech Republic: **submontane belt, montane belt**

Occurrence frequency in the basic grid mapping cells and quadrants of the basic grid mapping cells: 358

taxon.data.freq\_in\_quad: 827

## Commonness in vegetation plots from the Czech Republic

Occurrence frequency in vegetation plots: **2.3 %**

Occurrence frequency in vegetation plots with a cover above 5%: **18.1 %**

Occurrence frequency in vegetation plots with a cover above 25%: **3.1 %**

Occurrence frequency in vegetation plots with a cover above 50%: **0 %**

Mean percentage cover in vegetation plots: **4.9 %**

Maximum percentage cover in vegetation plots: **38 %**

## Number of habitats with taxon occurrence in the Czech Republic

Number of narrow habitats in which the taxon occurs: **19**

Number of narrow habitats in which the taxon has its optimum: **4**

Number of broad habitats in which the taxon occurs: **5**

Number of broad habitats in which the taxon has its optimum: **2**

## Threats and protection

Red List 2017 (national categories): **taxon is not on the Red List**

Red List 2017 (IUCN categories): **LC(NA) - least concern (taxon is not on the Red List)**

Legal protection: **not protected by law**