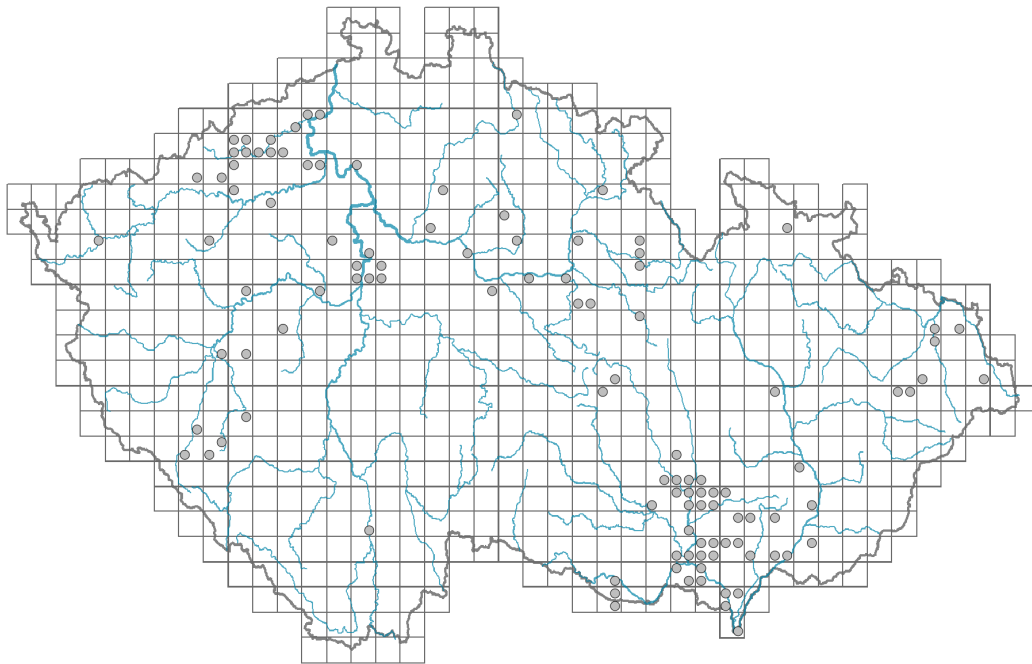


Elaeagnus angustifolia

Distribution



© Pavel Veselý

Map info

● revised records

○ unrevised records

On the map are not visualized records without the coordinates and records marked as incorrect or doubtful.



© Miroslav Pida

Habitus and growth type

Height [m]: **5-10**

Growth form: **tree**

Life form: **macrophanerophyte**

Life strategy: **C - competitor**

Leaf

Leaf presence and metamorphosis: **leaves present, not modified**

Leaf arrangement (phyllotaxis): **alternate**

Leaf shape: **simple - entire**

Stipules: **absent**

Petiole: **present**

Leaf life span: **summer green**

Leaf deciduousness in woody plants: **winter deciduous**

Leaf anatomy: **scleromorphic**

Functional leaf type in woody plants: **broad deciduous or semi-deciduous**

Flower

Flowering period [month]: **May-June**

Flower colour: **yellow**

Perianth type: **calyx present, corolla absent**



© Pavel Veselý



© Pavel Veselý

Calyx fusion: **synsepalous**
 Inflorescence type: **flores solitarii**
 Dicliny: **synoecious, andromonoecious**
 Generative reproduction type: **mixed mating**
 Pollination syndrome: **insect-pollination**



Fruit, seed and dispersal

Fruit type: **fleshy fruit - drupe**
 Fruit colour: **grey**
 Reproduction type: **by seed/spores and vegetatively**
 Dispersal unit (diaspore): **seed, fruit, infructescence or its part**
 Dispersal strategy: **Cornus (mainly autochory and endozoochory)**
 Myrmecochory: **non-myrmecochorous (b)**



Belowground organs and clonality

Shoot metamorphosis: **shoot thorn**
 Root metamorphosis: **root shoot**



Trophic mode

Parasitism and mycoheterotrophy: **autotrophic**
 Carnivory: **non-carnivorous**
 Symbiotic nitrogen fixation: **symbiosis with Frankia**

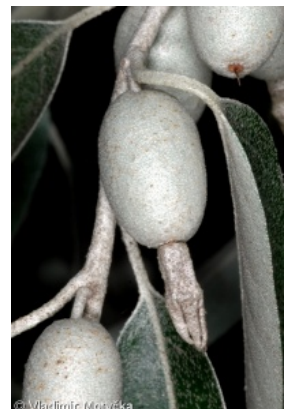


Karyology

Chromosome number (2n): **28**
 Ploidy level (x): **2**
 2C genome size [Mbp]: **1073.46**
 1Cx monoploid genome size [Mbp]: **536.73**
 Genomic GC content: **35 %**

Taxon origin

Origin in the Czech Republic: **neophyte**
 Invasion status: **casual**
 Geographic origin: **Europe, Mediterranean, Asia**
 Period of introduction: **Late Modern Period (1800-1950)**
 Introduction pathway: **intentional - ornamental, intentional - landscaping**



Ecological indicator values

Ellenberg-type indicator values

Light indicator value: **8 - light plant, only exceptionally occurring at less than 40% of diffuse radiation incident in an open area**

Temperature indicator value: **6 - transition between values 5 and 7**

Moisture indicator value: **5 - indicator of fresh soils, focus on soils of average moisture, missing on wet and on soils that frequently dry out**

Reaction indicator value: **7 - indicator of slightly acidic to slightly basic conditions, never occurring in very acidic conditions**

Nutrient indicator value: **5 - occurring at moderately nutrient-rich sites, and less frequently at poor and rich sites**

Salinity indicator value: **1 - salt tolerant, mostly on low-salt to salt-free soils, but occasionally on slightly salty soils**

Habitat and sociology

Affinity to the forest environment

Affinity to the forest environment in Thermophyticum: **0 - taxon that does not spontaneously occur in Czech forests**

Affinity to the forest environment in Mesophyticum and Oreophyticum: **0 - taxon that does not spontaneously occur in Czech forests**

Distribution and frequency

Floristic zone: **submeridional, meridional**

Floristic region: **Asia**

Continental degree: **9**

Distribution range extension along the continentality gradient: **3**

Occurrence frequency in the basic grid mapping cells and quadrants of the basic grid mapping cells: **81**

taxon.data.freq_in_quad: **113**

Commonness in vegetation plots from the Czech Republic

Occurrence frequency in vegetation plots: **0 %**

Occurrence frequency in vegetation plots with a cover above 5%: **0 %**

Occurrence frequency in vegetation plots with a cover above 25%: **0 %**

Occurrence frequency in vegetation plots with a cover above 50%: **0 %**

Mean percentage cover in vegetation plots: **2 %**

Maximum percentage cover in vegetation plots: **2 %**

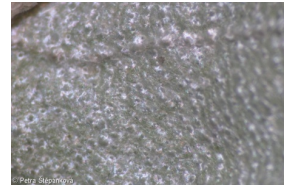
Threats and protection

Red List 2017 (national categories): **taxon is not on the Red List**

Red List 2017 (IUCN categories): **LC(NA) - least concern (taxon is not on the Red List)**

Legal protection: **not protected by law**

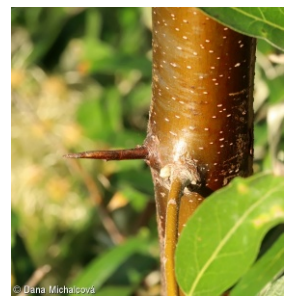


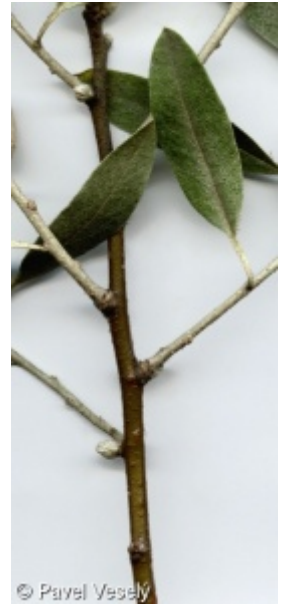


© Pavel Veselý



© Pavel Veselý





© Pavel Veselý