

# *Euphrasia salisburgensis*

## Distribution



© Ondřej Pěničík

### Map info

● revised records

○ unrevised records

On the map are not visualized records without the coordinates and records marked as incorrect or doubtful.

## Habitus and growth type

Growth form: **annual herb**

Life form: **therophyte**

## Leaf

Leaf presence and metamorphosis: **leaves present, not modified**

Leaf arrangement (phyllotaxis): **opposite**

Leaf shape: **simple - entire**

Stipules: **absent**

Petiole: **both present and absent**

## Flower

Flower colour: **white, violet**

Flower symmetry: **zygomorphic**

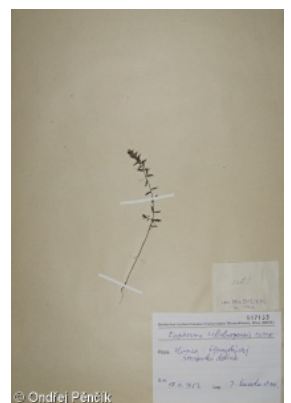
Perianth type: **calyx and corolla**

Perianth fusion: **fused**

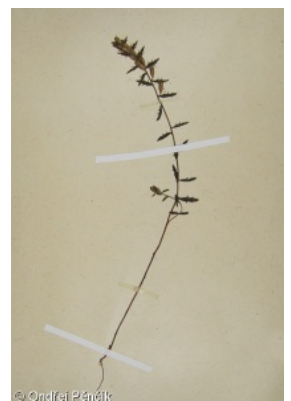
Shape of the sympetalous corolla or syntepalous perianth: **bilabiate**

Calyx fusion: **synsepalous**

Inflorescence type: **racemus**



© Ondřej Pěničík



© Ondřej Pěničík

## Fruit, seed and dispersal

Fruit type: **dry fruit - capsule**

Myrmecochory: **probably myrmecochorous nv**

## Belowground organs and clonality

Shoot life span (cyclicality): **monocyclic shoots prevailing**

Primary root: **present**

Bud bank

Number of buds per shoot at the soil surface (root buds excluded): **0**

Number of buds per shoot at a depth of 0–10 cm (root buds excluded): **0**

Number of buds per shoot at a depth greater than 10 cm (root buds excluded): **0**

Size of the belowground bud bank (root buds excluded): **0**

Number of buds per shoot at the soil surface (root buds included): **0**

Number of buds per shoot at a depth of 0–10 cm (root buds included): **0**

Number of buds per shoot at a depth greater than 10 cm (root buds included): **0**

Size of the belowground bud bank (root buds included): **0**

## Trophic mode

Parasitism and mycoheterotrophy: **root hemiparasite**

Carnivory: **non-carnivorous**

Symbiotic nitrogen fixation: **no nitrogen-fixing symbionts**

## Taxon origin

Origin in the Czech Republic: **neophyte**

Invasion status: **casual**

Geographic origin: **Europe**

Year of the first record in the wild: **1901**

Period of introduction: **Late Modern Period (1800-1950)**

Introduction pathway: **intentional - nature**

## Ecological indicator values

Ellenberg-type indicator values

Light indicator value: **7 - half-light plant, mostly occurring at full light, but also in the shade up to about 30% of diffuse radiation incident in an open area**

Temperature indicator value: **3 - cool indicator, occurring mainly in subalpine areas**

Moisture indicator value: **5 - indicator of fresh soils, focus on soils of average moisture, missing on wet and on soils that frequently dry out**

Reaction indicator value: **8 - transition between values 7 and 9, occurring mostly in calcium-rich conditions**

Nutrient indicator value: **4 - transition between values 3 and 5**

Salinity indicator value: **0 - not salt tolerant, glycophyte**



## Habitat and sociology

Affinity to the forest environment

Affinity to the forest environment in Thermophyticum: **0 - taxon that does not spontaneously occur in Czech forests**

Affinity to the forest environment in Mesophyticum and Oreophyticum: **0 - taxon that does not spontaneously occur in Czech forests**

## Distribution and frequency

Continentality degree: **3**

Distribution range extension along the continentality gradient: **3**

Occurrence frequency in the basic grid mapping cells and quadrants of the basic grid mapping cells: **0**

taxon.data.freq\_in\_quad: **0**

## Threats and protection

Red List 2017 (national categories): **taxon is not on the Red List**

Red List 2017 (IUCN categories): **LC(NA) - least concern (taxon is not on the Red List)**

Legal protection: **not protected by law**