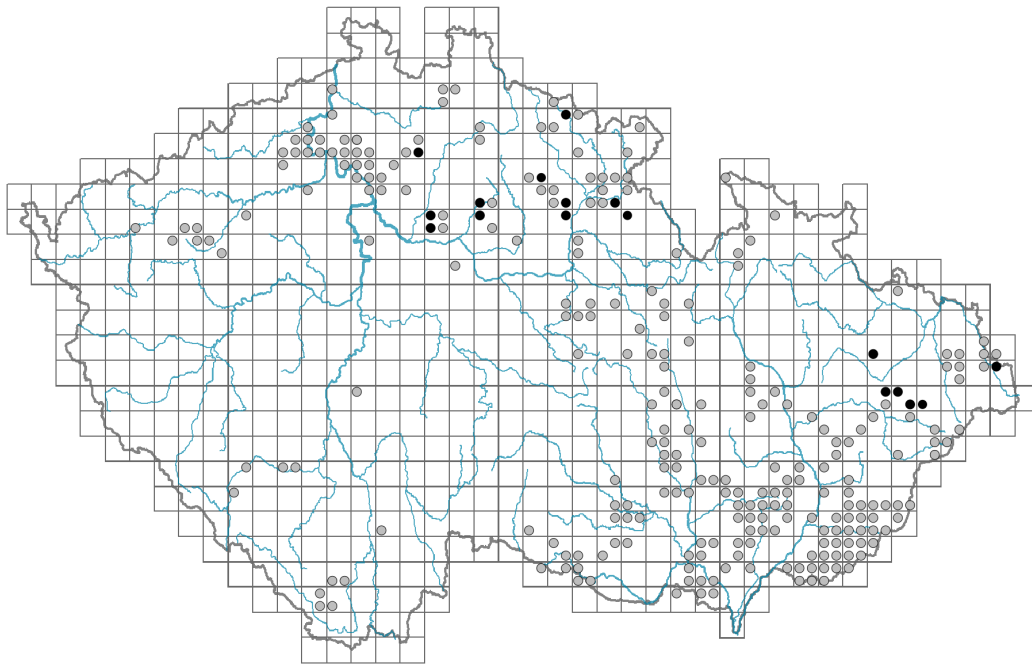


Gentiana cruciata

Distribution



© Aleš Moravec

Map info

● revised records

○ unrevised records

On the map are not visualized records without the coordinates and records marked as incorrect or doubtful.



© Petr Věselý



© Karel Fajmon

Habitus and growth type

Height [m]: **0.12-0.45**

Growth form: **polycarpic perennial non-clonal herb**

Life form: **hemicryptophyte**

Life strategy: **CSR - competitor/stress-tolerator/ruderal**

Life strategy (Pierce method based on leaf traits): **CSR**

Life strategy (Pierce method, C-score): **38.4 %**

Life strategy (Pierce method, S-score): **32.1 %**

Life strategy (Pierce method, R-score): **29.6 %**

Leaf

Leaf presence and metamorphosis: **leaves present, not modified**

Leaf arrangement (phyllotaxis): **opposite, rosulate**

Leaf shape: **simple - entire**

Stipules: **absent**

Petiole: **both present and absent**

Leaf life span: **summer green**

Leaf anatomy: **scleromorphic, mesomorphic**

Flower

Flowering period [month]: **July-October**

Flowering phase: **8 Clematis vitalba-Galium sylvaticum (mid-summer)**

Flower colour: **blue**

Flower symmetry: **actinomorphic**

Perianth type: **calyx and corolla**

Perianth fusion: **fused**

Shape of the sympetalous corolla or syntepalous perianth: **campanulate**

Calyx fusion: **synsepalous**

Inflorescence type: **racemus e verticillastris compositus**

Dicliny: **synoecious**

Generative reproduction type: **mixed mating**

Pollination syndrome: **insect-pollination, selfing**

Fruit, seed and dispersal

Fruit type: **dry fruit - capsule**

Fruit colour: **brown**

Reproduction type: **only by seed/spores**

Dispersal unit (diaspore): **seed**

Dispersal strategy: **Allium (mainly autochory)**

Myrmecochory: **non-myrmecochorous (b)**

Belowground organs and clonality

Shoot metamorphosis: **pleiocorm**

Root metamorphosis: **primary storage root**

Storage organ: **pleiocorm, primary storage root**

Shoot life span (cyclicality): **monocyclic shoots prevailing**

Branching type of stem-derived organs of clonal growth: **sympodial**

Primary root: **present**

Bud bank

Number of buds per shoot at the soil surface (root buds excluded): **8**

Number of buds per shoot at a depth of 0–10 cm (root buds excluded): **13**

Number of buds per shoot at a depth greater than 10 cm (root buds excluded): **0**

Size of the belowground bud bank (root buds excluded): **20**

Depth of the belowground bud bank (root buds excluded) [cm]: **4**

Number of buds per shoot at the soil surface (root buds included): **8**

Number of buds per shoot at a depth of 0–10 cm (root buds included): **13**

Number of buds per shoot at a depth greater than 10 cm (root buds included): **0**

Size of the belowground bud bank (root buds included): **20**

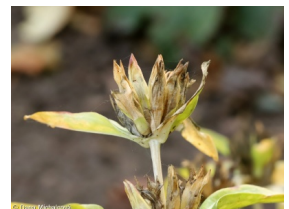
Depth of the belowground bud bank (root buds included) [cm]: **4**

Trophic mode

Parasitism and mycoheterotrophy: **autotrophic**

Carnivory: **non-carnivorous**

Symbiotic nitrogen fixation: **no nitrogen-fixing symbionts**



Karyology

Chromosome number (2n): **52**

Ploidy level (x): **4**

2C genome size [Mbp]: **7430.55**

1Cx monoploid genome size [Mbp]: **1857.64**

Genomic GC content: **40.8 %**

Taxon origin

Origin in the Czech Republic: **native**

Ecological indicator values

Ellenberg-type indicator values

Light indicator value: **7 - half-light plant, mostly occurring at full light, but also in the shade up to about 30% of diffuse radiation incident in an open area**

Temperature indicator value: **6 - transition between values 5 and 7**

Moisture indicator value: **3 - missing on damp soil**

Reaction indicator value: **8 - transition between values 7 and 9, occurring mostly in calcium-rich conditions**

Nutrient indicator value: **3 - occurring at nutrient-poor sites more frequently than at average sites and exceptionally at rich sites**

Salinity indicator value: **0 - not salt tolerant, glycophyte**

Habitat and sociology

Occurrence in habitats

6 Meadows and mesic pastures

6A Mesic Arrhenatherum meadows: **1 - rare occurrence**

6C Pastures and park grasslands: **1 - rare occurrence**

8 Dry grasslands

8D Broad-leaved dry grasslands: **2 - optimum**

8E Acidophilous dry grasslands: **1 - rare occurrence**

8F Thermophilous forest fringe vegetation: **1 - rare occurrence**

11 Heathlands and scrub

11L Tall mesic and xeric shrub: **1 - rare occurrence**

12 Forests

12H Peri-Alpidic basiphilous thermophilous oak forests: **1 - rare occurrence**

12I Sub-continental thermophilous oak forests: **1 - rare occurrence**

12O Peri-Alpidic pine forests: **1 - rare occurrence**

Affinity to the forest environment

Affinity to the forest environment in Thermophyticum: **0 - taxon that does not spontaneously occur in Czech forests**

Affinity to the forest environment in Mesophyticum and Oreophyticum: **0 - taxon that does not spontaneously occur in Czech forests**

Diagnostic taxon

Diagnostic taxon of associations: [TDC02 Anthoxantho odorati-Agrostietum tenuis](#)



© Pavel Veselý

Ecological specialization indices

Ecological specialization index for all vegetation types: **6.1**

Ecological specialization index for non-forest vegetation: **6**

Colonization ability

Index of colonization success (ICS): **1**

Distribution and frequency

Floristic zone: **northern temperate, southern temperate, submeridional**

Floristic region: **Europe, Western Asia**

Continentality degree: **6**

Distribution range extension along the continentality gradient: **5**

Elevational belt in the Czech Republic: **lowlands, colline belt, submontane belt (montane belt)**

Occurrence frequency in the basic grid mapping cells and quadrants of the basic grid mapping cells: 170

taxon.data.freq_in_quad: 269

Commonness in vegetation plots from the Czech Republic

Occurrence frequency in vegetation plots: **0 %**

Occurrence frequency in vegetation plots with a cover above 5%: **0 %**

Occurrence frequency in vegetation plots with a cover above 25%: **0 %**

Occurrence frequency in vegetation plots with a cover above 50%: **0 %**

Mean percentage cover in vegetation plots: **1.9 %**

Maximum percentage cover in vegetation plots: **3 %**

Number of habitats with taxon occurrence in the Czech Republic

Number of narrow habitats in which the taxon occurs: **9**

Number of narrow habitats in which the taxon has its optimum: **1**

Number of broad habitats in which the taxon occurs: **4**

Number of broad habitats in which the taxon has its optimum: **1**

Threats and protection

Red List 2017 (national categories): **C2b - endangered taxon, rare and declining**

Red List 2017 (IUCN categories): **EN - endangered**

Legal protection: **vulnerable taxon**