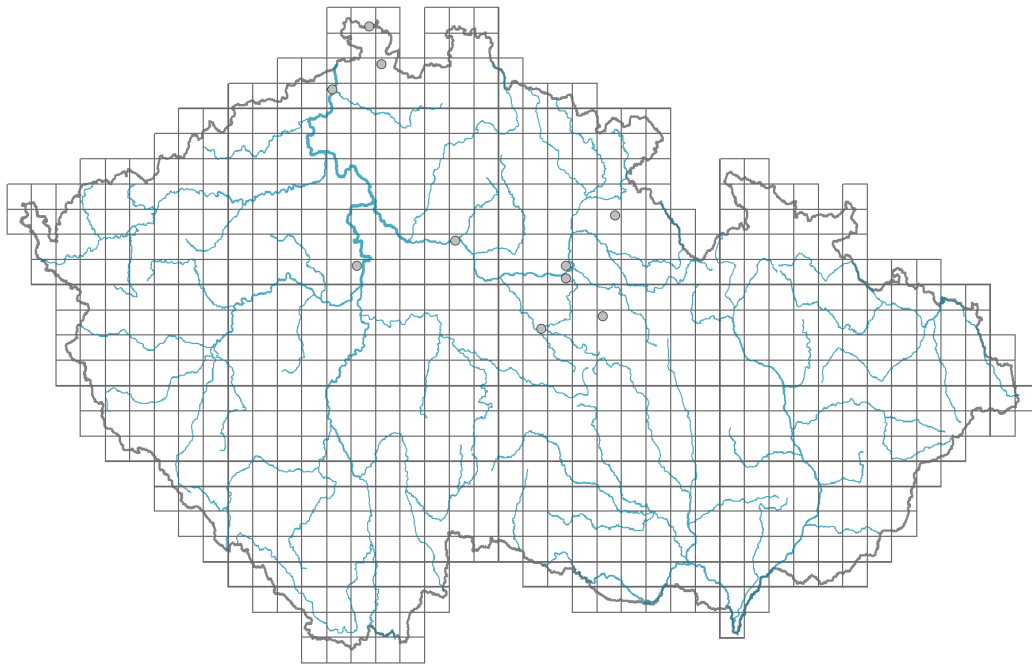


Glebionis segetum

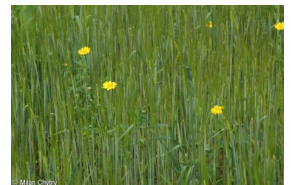
Distribution



Map info

- revised records
- unrevised records

On the map are not visualized records without the coordinates and records marked as incorrect or doubtful.



Habitus and growth type

Height [m]: **0.3-0.4**

Growth form: **annual herb**

Life form: **therophyte**

Life strategy: **CR - competitor/ruderal**

Leaf

Leaf presence and metamorphosis: **leaves present, not modified**

Leaf arrangement (phyllotaxis): **alternate**

Leaf shape: **simple - pinnately divided**

Stipules: **absent**

Petiole: **both present and absent**

Leaf life span: **summer green**

Leaf anatomy: **mesomorphic, hygromorphic**

Flower

Flowering period [month]: **June-October**

Flowering phase: **7 Ligustrum vulgare-Stachys sylvatica (end of early summer)**

Flower colour: **yellow**

Flower symmetry: **actinomorphic, zygomorphic**

Perianth type: **calyx absent, corolla present**

Perianth fusion: **fused**

Shape of the sympetalous corolla or syntepalous perianth: **ligulate, tubular**

Inflorescence type: **corymbothsus ex anthodiis compositus**

Dicliny: **gynomonoecious**

Generative reproduction type: **allogamy**

Pollination syndrome: **insect-pollination**

Fruit, seed and dispersal

Fruit type: **dry fruit - achene/cypsela/samara**

Reproduction type: **only by seed/spores**

Dispersal unit (diaspore): **fruit, infrutescence or its part**

Dispersal strategy: **Allium (mainly autochory)**

Myrmecochory: **probably myrmecochorous**

Belowground organs and clonality

Shoot life span (cyclicality): **monocyclic shoots prevailing**

Primary root: **present**

Bud bank

Number of buds per shoot at the soil surface (root buds excluded): **5**

Number of buds per shoot at a depth of 0-10 cm (root buds excluded): **0**

Number of buds per shoot at a depth greater than 10 cm (root buds excluded): **0**

Size of the belowground bud bank (root buds excluded): **5**

Depth of the belowground bud bank (root buds excluded) [cm]: **1**

Number of buds per shoot at the soil surface (root buds included): **5**

Number of buds per shoot at a depth of 0-10 cm (root buds included): **0**

Number of buds per shoot at a depth greater than 10 cm (root buds included): **0**

Size of the belowground bud bank (root buds included): **5**

Depth of the belowground bud bank (root buds included) [cm]: **1**

Trophic mode

Parasitism and mycoheterotrophy: **autotrophic**

Carnivory: **non-carnivorous**

Symbiotic nitrogen fixation: **no nitrogen-fixing symbionts**

Taxon origin

Origin in the Czech Republic: **neophyte**

Invasion status: **casual**

Geographic origin: **Mediterranean**

Year of the first record in the wild: **1872**

Period of introduction: **Late Modern Period (1800-1950)**

Introduction pathway: **unintentional - agriculture**

Ecological indicator values

Ellenberg-type indicator values

Light indicator value: **8 - light plant, only exceptionally occurring at less than 40% of diffuse radiation incident in an open area**

Temperature indicator value: **7 - heat indicator, occurring in relatively warm lowlands**

Moisture indicator value: **5 - indicator of fresh soils, focus on soils of average moisture, missing on wet and on soils that frequently dry out**

Reaction indicator value: **5 - indicator of moderate acidity, occurring rarely in strongly acidic as well as in neutral to alkaline conditions**

Nutrient indicator value: **5 - occurring at moderately nutrient-rich sites, and less frequently at poor and rich sites**

Salinity indicator value: **0 - not salt tolerant, glycophyte**

Habitat and sociology

Occurrence in habitats

13 Anthropogenic vegetation

13A Annual vegetation of ruderal habitats: **1 - rare occurrence**

13B Annual vegetation of arable land: **1 - rare occurrence**

13D Perennial thermophilous ruderal vegetation: **1 - rare occurrence**

Affinity to the forest environment

Affinity to the forest environment in Thermophyticum: **0 - taxon that does not spontaneously occur in Czech forests**

Affinity to the forest environment in Mesophyticum and Oreophyticum: **0 - taxon that does not spontaneously occur in Czech forests**

Distribution and frequency

Floristic zone: **boreal, meridional**

Floristic region: **Europe, Siberia**

Continental degree: **3**

Distribution range extension along the continentality gradient: **3**

Occurrence frequency in the basic grid mapping cells and quadrants of the basic grid mapping cells: **9**

taxon.data.freq_in_quad: **10**

Number of habitats with taxon occurrence in the Czech Republic

Number of narrow habitats in which the taxon occurs: **3**

Number of narrow habitats in which the taxon has its optimum: **0**

Number of broad habitats in which the taxon occurs: **1**

Number of broad habitats in which the taxon has its optimum: **0**

Threats and protection

Red List 2017 (national categories): **taxon is not on the Red List**

Red List 2017 (IUCN categories): **LC(NA) - least concern (taxon is not on the Red List)**

Legal protection: **not protected by law**