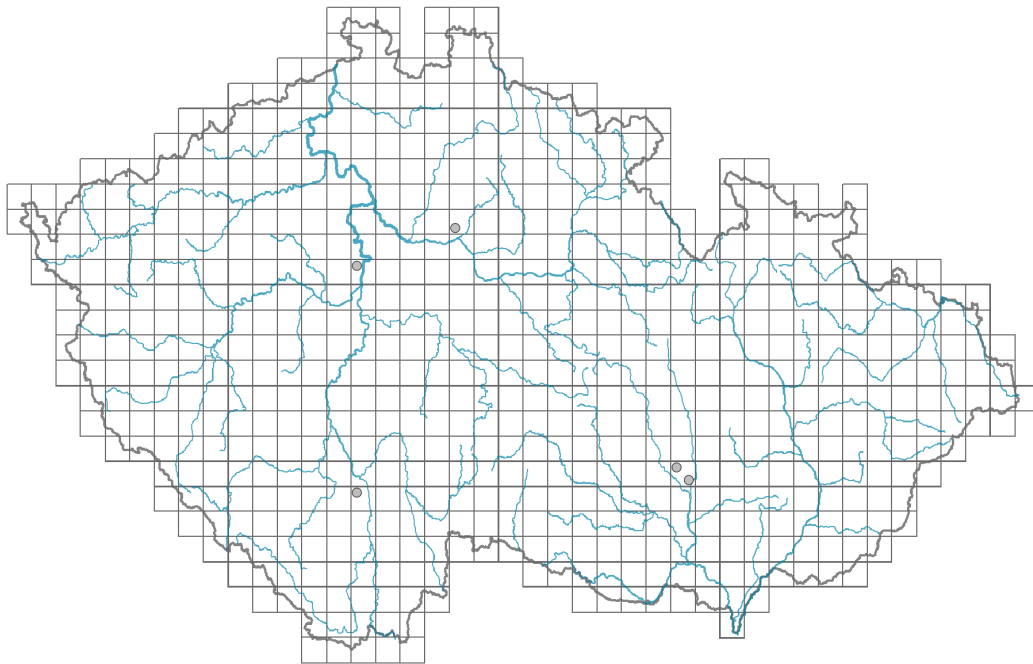


Lolium rigidum

Distribution



© Dana Michalcová

Map info

● revised records

○ unrevised records

On the map are not visualized records without the coordinates and records marked as incorrect or doubtful.

Habitus and growth type

Growth form: **annual herb**

Life form: **therophyte**

Life strategy (Pierce method based on leaf traits): **SR**

Life strategy (Pierce method, C-score): **8.7 %**

Life strategy (Pierce method, S-score): **45 %**

Life strategy (Pierce method, R-score): **46.3 %**

Leaf

Leaf presence and metamorphosis: **leaves present, not modified**

Leaf arrangement (phyllotaxis): **alternate**

Leaf shape: **simple - entire**

Stipules: **absent**

Petiole: **absent**

Flower

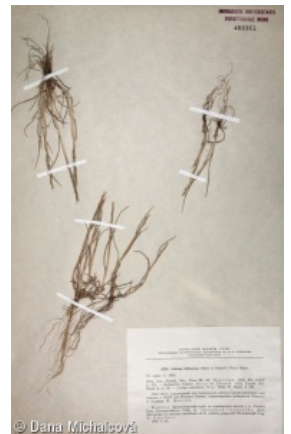
Flower colour: **green**

Perianth type: **reduced**

Perianth fusion: **reduced**

Inflorescence type: **spica e spiculis composita**

Generative reproduction type: **mixed mating**



© Dana Michalcová



© Dana Michalcová

Fruit, seed and dispersal

Fruit type: **dry fruit - caryopsis**

Dispersal unit (diaspore): **fruit, infructescence or its part**

Dispersal strategy: **Allium (mainly autochory)**

Myrmecochory: **non-myrmecochorous (b)**

Trophic mode

Parasitism and mycoheterotrophy: **autotrophic**

Carnivory: **non-carnivorous**

Symbiotic nitrogen fixation: **no nitrogen-fixing symbionts**

Karyology

Chromosome number (2n): **14**

Ploidy level (x): **2**

2C genome size [Mbp]: **4739.27**

1Cx monoploid genome size [Mbp]: **2369.63**

Genomic GC content: **46.5 %**

Taxon origin

Origin in the Czech Republic: **neophyte**

Invasion status: **casual**

Geographic origin: **Mediterranean**

Habitat and sociology

Affinity to the forest environment

Affinity to the forest environment in Thermophyticum: **0 - taxon that does not spontaneously occur in Czech forests**

Affinity to the forest environment in Mesophyticum and Oreophyticum: **0 - taxon that does not spontaneously occur in Czech forests**

Threats and protection

Red List 2017 (national categories): **taxon is not on the Red List**

Red List 2017 (IUCN categories): **LC(NA) - least concern (taxon is not on the Red List)**

Legal protection: **not protected by law**





