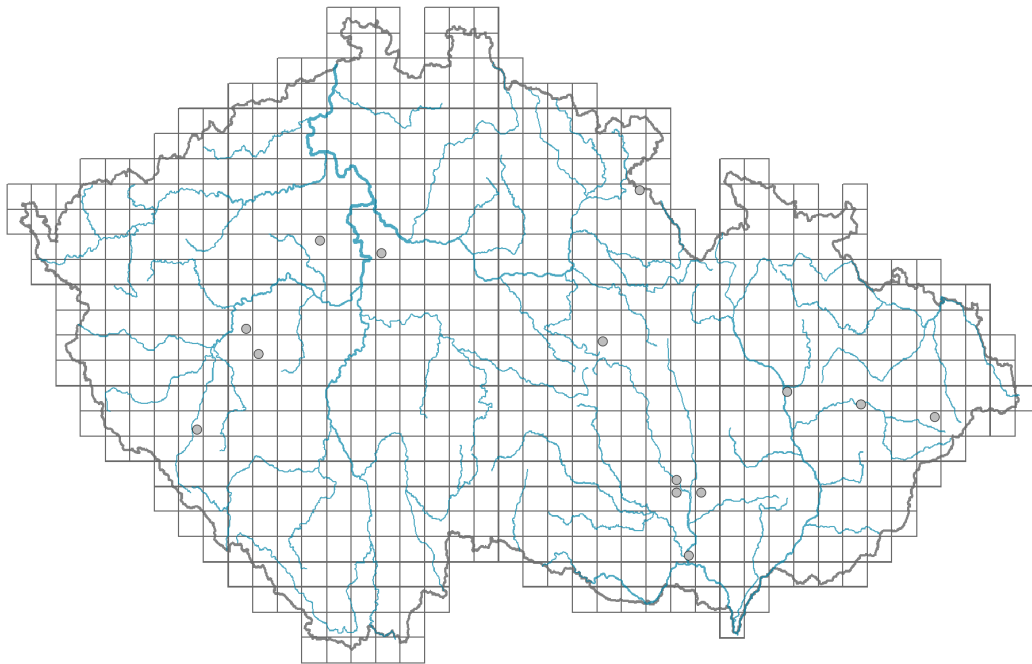


Paeonia lactiflora

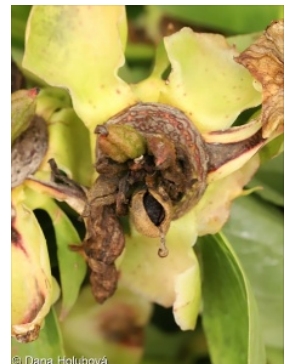
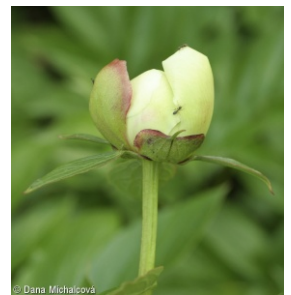
Distribution



Map info

- revised records
- unrevised records

On the map are not visualized records without the coordinates and records marked as incorrect or doubtful.



Habitus and growth type

Height [m]: **0.6-1**

Life form: **geophyte**

Leaf

Leaf presence and metamorphosis: **leaves present, not modified**

Leaf arrangement (phyllotaxis): **alternate**

Leaf shape: **compound - ternate**

Stipules: **absent**

Petiole: **present**

Flower

Flowering period [month]: **June**

Flower colour: **white, pink**

Flower symmetry: **actinomorphic**

Perianth type: **calyx and corolla**

Perianth fusion: **free**

Calyx fusion: **aposepalous**

Inflorescence type: **flores solitarii**

Fruit, seed and dispersal

Fruit type: **dry fruit - cluster of follicles**
Dispersal strategy: **Zea (no dispersal)**
Myrmecochory: **non-myrmecochorous (b)**

Trophic mode

Parasitism and mycoheterotrophy: **autotrophic**
Carnivory: **non-carnivorous**
Symbiotic nitrogen fixation: **no nitrogen-fixing symbionts**

Taxon origin

Origin in the Czech Republic: **neophyte**
Invasion status: **casual**
Geographic origin: **Asia**
Year of the first record in the wild: **2011**
Period of introduction: **Late Modern Period (1800-1950)**
Introduction pathway: **intentional - ornamental**

Habitat and sociology

Affinity to the forest environment
Affinity to the forest environment in Thermophyticum: **0 - taxon that does not spontaneously occur in Czech forests**
Affinity to the forest environment in Mesophyticum and Oreophyticum: **0 - taxon that does not spontaneously occur in Czech forests**

Threats and protection

Red List 2017 (national categories): **taxon is not on the Red List**
Red List 2017 (IUCN categories): **LC(NA) - least concern (taxon is not on the Red List)**
Legal protection: **not protected by law**

