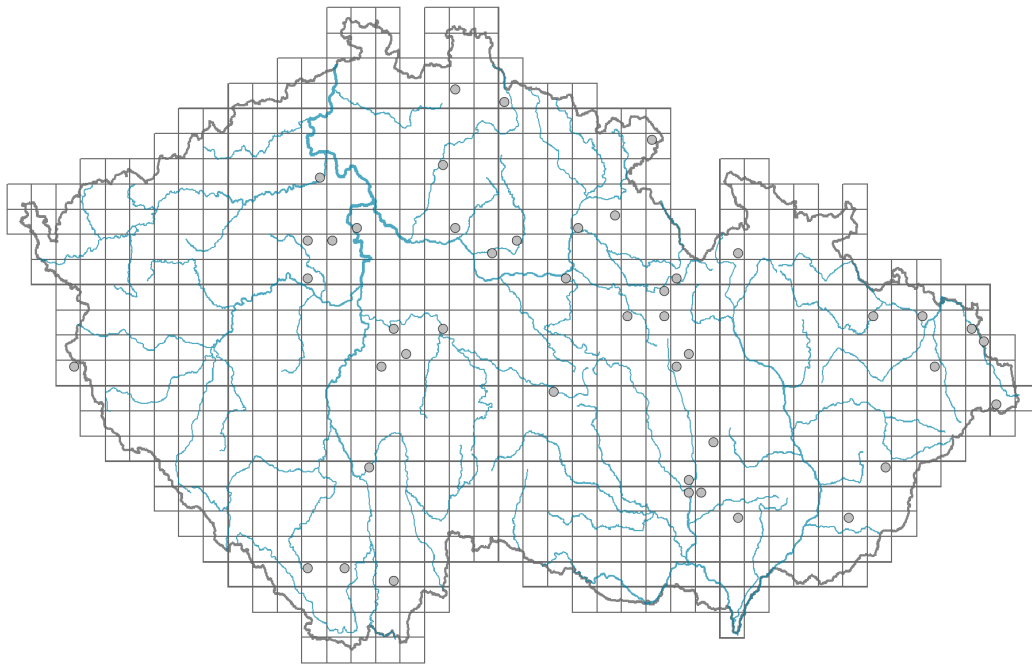


# *Paeonia officinalis*

## Distribution

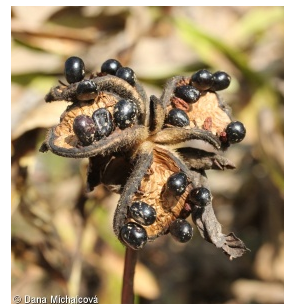


### Map info

● revised records

○ unrevised records

On the map are not visualized records without the coordinates and records marked as incorrect or doubtful.



## Habitus and growth type

Height [m]: **0.4-0.8**

Life form: **geophyte**

Life strategy: **C - competitor**

Life strategy (Pierce method based on leaf traits): **C/CS**

Life strategy (Pierce method, C-score): **67.8 %**

Life strategy (Pierce method, S-score): **27.3 %**

Life strategy (Pierce method, R-score): **4.9 %**

## Leaf

Leaf presence and metamorphosis: **leaves present, not modified**

Leaf arrangement (phyllotaxis): **alternate**

Leaf shape: **compound - bipinnate, compound - tripinnate**

Stipules: **absent**

Petiole: **present**

Leaf life span: **summer green**

Leaf anatomy: **mesomorphic**

## Flower

Flowering period [month]: **May-June**

Flower colour: **white, pink, red-violet**

Flower symmetry: **actinomorphic**  
Perianth type: **calyx and corolla**  
Perianth fusion: **free**  
Calyx fusion: **aposepalous**  
Inflorescence type: **flores solitarii**  
Dicliny: **synoecious**  
Generative reproduction type: **allogamy self-incompatibility**  
Pollination syndrome: **insect-pollination**



### **Fruit, seed and dispersal**

Fruit type: **dry fruit - cluster of follicles**  
Fruit colour: **brown**  
Reproduction type: **only by seed/spores**  
Dispersal strategy: **Zea (no dispersal)**  
Myrmecochory: **non-myrmecochorous (b)**

### **Belowground organs and clonality**

Shoot metamorphosis: **pleiocorm**  
Root metamorphosis: **primary storage root**  
Storage organ: **pleiocorm, primary storage root**

### **Trophic mode**

Parasitism and mycoheterotrophy: **autotrophic**  
Carnivory: **non-carnivorous**  
Symbiotic nitrogen fixation: **no nitrogen-fixing symbionts**

### **Taxon origin**

Origin in the Czech Republic: **archaeophyte/neophyte**  
Invasion status: **casual**  
Geographic origin: **Mediterranean**  
Period of introduction: **Late Middle Ages and Early Modern Period (merged category, 1200-1800)**  
Introduction pathway: **intentional - ornamental**

### **Habitat and sociology**

Affinity to the forest environment  
Affinity to the forest environment in Thermophyticum: **0 - taxon that does not spontaneously occur in Czech forests**  
Affinity to the forest environment in Mesophyticum and Oreophyticum: **0 - taxon that does not spontaneously occur in Czech forests**

### **Distribution and frequency**

Floristic zone: **submeridional**  
Floristic region: **Europe**

Occurrence frequency in the basic grid mapping cells and quadrants of the basic grid  
mapping cells: 46  
taxon.data.freq\_in\_quad: 46

### **Threats and protection**

Red List 2017 (national categories): **taxon is not on the Red List**

Red List 2017 (IUCN categories): **LC(NA) - least concern (taxon is not on the Red List)**

Legal protection: **not protected by law**