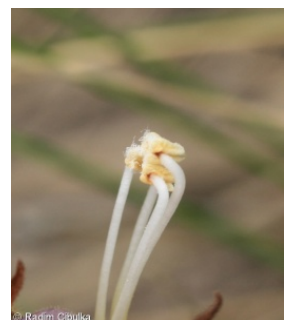
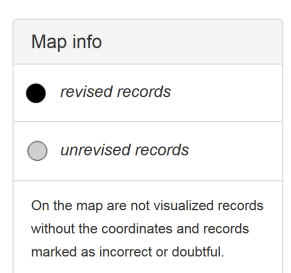
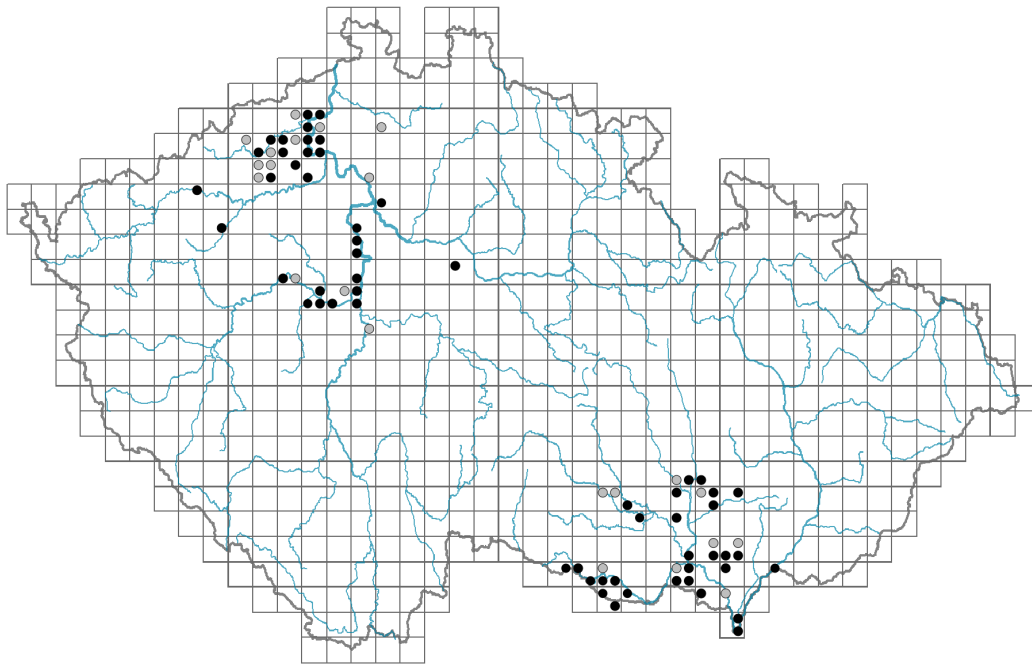


# *Phelipanche arenaria*

## Distribution



## Habitus and growth type

Height [m]: **0.15-0.6**

Growth form: **clonal herb**

Life form: **geophyte**

## Leaf

Leaf presence and metamorphosis: **leaves reduced to scales**

Leaf shape: **simple - entire**

Stipules: **absent**

Leaf anatomy: **scleromorphic, mesomorphic**

## Flower

Flowering period [month]: **June-July**

Flowering phase: **6 Cornus sanguinea-Melica uniflora (start of early summer)**

Flower colour: **blue, blue-violet**

Flower symmetry: **zygomorphic**

Perianth type: **calyx and corolla**

Perianth fusion: **fused**

Shape of the sympetalous corolla or syntepalous perianth: **bilabiate**

Calyx fusion: **synsepalous**

Inflorescence type: **spica**

Dicliny: **synoecious**

Pollination syndrome: **insect-pollination, selfing**

### Fruit, seed and dispersal

Fruit type: **dry fruit - capsule**

Fruit colour: **brown**

Reproduction type: **only by seed/spores**

Dispersal unit (diaspore): **seed**

Dispersal strategy: **Lycopodium (mainly anemochory)**

Myrmecochory: **non-myrmecochorous (b) nv**

### Belowground organs and clonality

Shoot metamorphosis: **shoot tuber**

Storage organ: **shoot tuber**

Type of clonal growth organ: **root with adventitious buds**

Freely dispersible organs of clonal growth: **absent**

Shoot life span (cyclicality): **monocyclic shoots prevailing**

Branching type of stem-derived organs of clonal growth: **sympodial**

Primary root: **absent**

Position of root buds: **hypocotyl**

Role of root buds in life-history of a plant: **necessary**

#### Bud bank

Number of buds per shoot at the soil surface (root buds excluded): **5**

Number of buds per shoot at a depth of 0–10 cm (root buds excluded): **5**

Number of buds per shoot at a depth greater than 10 cm (root buds excluded): **0**

Size of the belowground bud bank (root buds excluded): **10**

Depth of the belowground bud bank (root buds excluded) [cm]: **3**

Number of buds per shoot at the soil surface (root buds included): **5**

Number of buds per shoot at a depth of 0–10 cm (root buds included): **5**

Number of buds per shoot at a depth greater than 10 cm (root buds included): **10**

Size of the belowground bud bank (root buds included): **20**

Depth of the belowground bud bank (root buds included) [cm]: **9**

### Trophic mode

Parasitism and mycoheterotrophy: **root holoparasite**

Carnivory: **non-carnivorous**

Symbiotic nitrogen fixation: **no nitrogen-fixing symbionts**

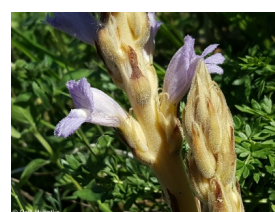
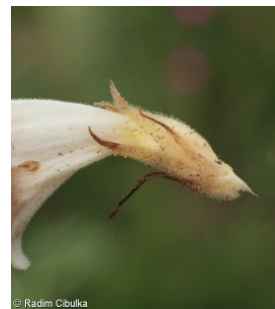
### Taxon origin

Origin in the Czech Republic: **native**

### Ecological indicator values

Ellenberg-type indicator values

Light indicator value: **8 - light plant, only exceptionally occurring at less than 40%**



### **of diffuse radiation incident in an open area**

Temperature indicator value: **8 - transition between values 7 and 9**

Moisture indicator value: **2 - transition between values 1 and 3**

Reaction indicator value: **8x - transition between values 7 and 9, occurring mostly in calcium-rich conditions (generalist)**

Nutrient indicator value: **2 - transition between values 1 and 3**

Salinity indicator value: **0 - not salt tolerant, glycophyte**

### **Habitat and sociology**

Occurrence in habitats

8 Dry grasslands

8A Hercynian dry grasslands on rock outcrops: **2 - optimum**

8B Submediterranean dry grasslands on rock outcrops: **1 - rare occurrence**

8C Narrow-leaved sub-continental steppes: **2 - optimum**

Affinity to the forest environment

Affinity to the forest environment in Thermophyticum: **0 - taxon that does not spontaneously occur in Czech forests**

Affinity to the forest environment in Mesophyticum and Oreophyticum: **0 - taxon that does not spontaneously occur in Czech forests**

Colonization ability

Index of colonization success (ICS): **1**

### **Distribution and frequency**

Floristic zone: **southern temperate, submeridional, meridional**

Floristic region: **Europe**

Continental degree: **6**

Distribution range extension along the continentality gradient: **6**

Elevational belt in the Czech Republic: **colline belt (lowlands)**

Occurrence frequency in the basic grid mapping cells and quadrants of the basic grid mapping cells: **51**

taxon.data.freq\_in\_quad: **88**

Commonness in vegetation plots from the Czech Republic

Occurrence frequency in vegetation plots: **0 %**

Occurrence frequency in vegetation plots with a cover above 5%: **0 %**

Occurrence frequency in vegetation plots with a cover above 25%: **0 %**

Occurrence frequency in vegetation plots with a cover above 50%: **0 %**

Mean percentage cover in vegetation plots: **1.3 %**

Maximum percentage cover in vegetation plots: **2 %**

Number of habitats with taxon occurrence in the Czech Republic

Number of narrow habitats in which the taxon occurs: **3**

Number of narrow habitats in which the taxon has its optimum: **2**

Number of broad habitats in which the taxon occurs: **1**

Number of broad habitats in which the taxon has its optimum: **1**

## **Threats and protection**

Red List 2017 (national categories): **C2b - endangered taxon, rare and declining**

Red List 2017 (IUCN categories): **EN - endangered**

Legal protection: **not protected by law**