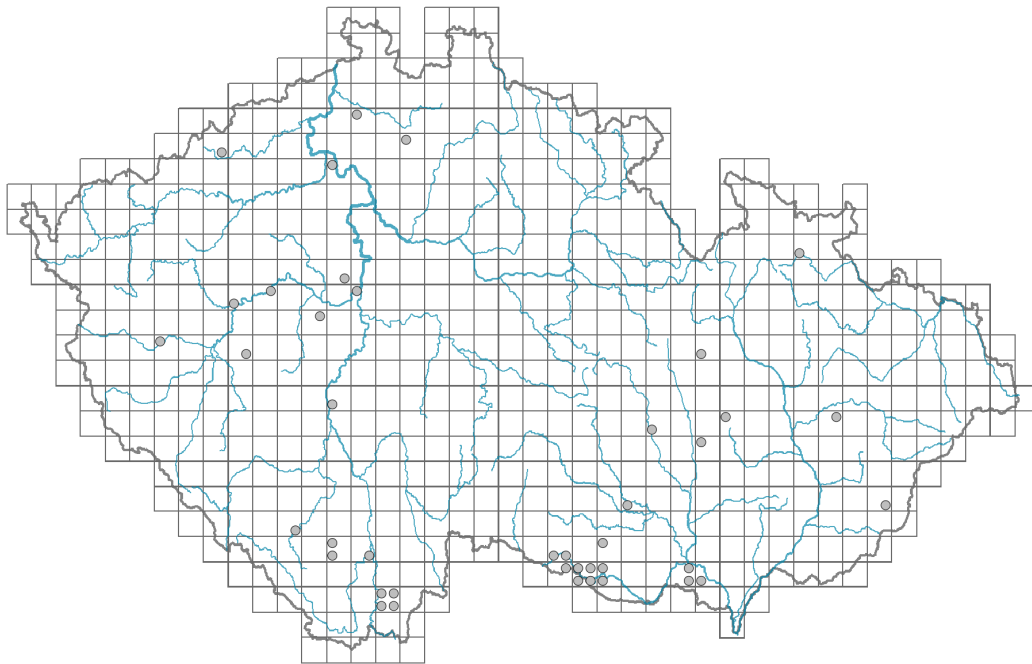


Arabis turrata

Distribution



Map info

● revised records

○ unrevised records

On the map are not visualized records without the coordinates and records marked as incorrect or doubtful.



Habitus and growth type

Height [m]: **0.3-0.8**

Growth form: **polycarpic perennial non-clonal herb**

Life form: **hemicryptophyte**

Life strategy (Pierce method based on leaf traits): **CR**

Life strategy (Pierce method, C-score): **47 %**

Life strategy (Pierce method, S-score): **0 %**

Life strategy (Pierce method, R-score): **53 %**

Leaf

Leaf presence and metamorphosis: **leaves present, not modified**

Leaf arrangement (phyllotaxis): **alternate, rosulate**

Leaf shape: **simple - entire**

Stipules: **absent**

Petiole: **both present and absent**

Flower

Flowering period [month]: **April-May**

Flower colour: **white, yellow-white**

Flower symmetry: **actinomorphic**

Perianth type: **calyx and corolla**

Perianth fusion: **free**
 Calyx fusion: **aposepalous**
 Inflorescence type: **racemus**
 Generative reproduction type: **mixed mating**

Fruit, seed and dispersal

Fruit type: **dry fruit - siliqua**
 Fruit colour: **brown**
 Dispersal unit (diaspore): **seed**
 Dispersal strategy: **Allium (mainly autochory)**
 Myrmecochory: **non-myrmecochorous (b)**

Belowground organs and clonality

Shoot life span (cyclicity): **dicyclic or polycyclic shoots prevailing**
 Branching type of stem-derived organs of clonal growth: **sympodial**
 Primary root: **present**
 Position of root buds: **lateral roots**
 Role of root buds in life-history of a plant: **additive**

Bud bank

Number of buds per shoot at the soil surface (root buds excluded): **5**
 Number of buds per shoot at a depth of 0–10 cm (root buds excluded): **3**
 Number of buds per shoot at a depth greater than 10 cm (root buds excluded): **0**
 Size of the belowground bud bank (root buds excluded): **8**
 Depth of the belowground bud bank (root buds excluded) [cm]: **2**
 Number of buds per shoot at the soil surface (root buds included): **5**
 Number of buds per shoot at a depth of 0–10 cm (root buds included): **10**
 Number of buds per shoot at a depth greater than 10 cm (root buds included): **15**
 Size of the belowground bud bank (root buds included): **30**
 Depth of the belowground bud bank (root buds included) [cm]: **9**

Trophic mode

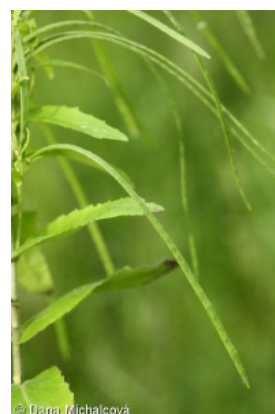
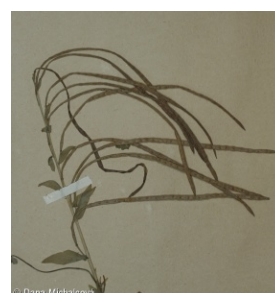
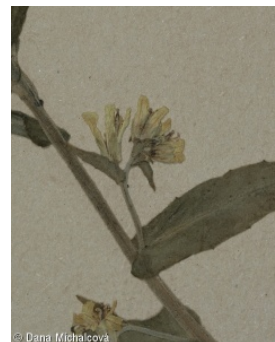
Parasitism and mycoheterotrophy: **autotrophic**
 Carnivory: **non-carnivorous**
 Symbiotic nitrogen fixation: **no nitrogen-fixing symbionts**

Karyology

Chromosome number (2n): **16**
 Ploidy level (x): **2**
 2C genome size [Mbp]: **755.38**
 1Cx monoploid genome size [Mbp]: **377.69**
 Genomic GC content: **40.6 %**

Taxon origin

Origin in the Czech Republic: **native**



Ecological indicator values

Ellenberg-type indicator values

Light indicator value: **6 - transition between values 5 and 7; rarely at less than 20% of diffuse radiation incident in an open area**

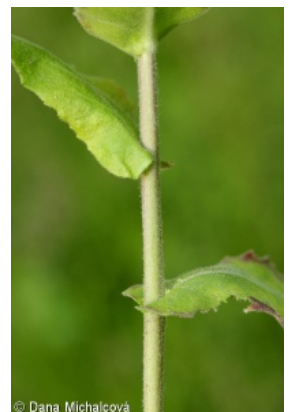
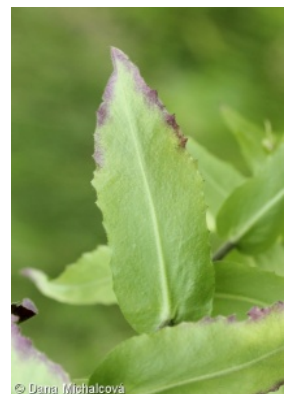
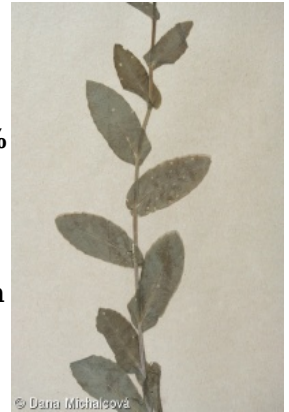
Temperature indicator value: **6 - transition between values 5 and 7**

Moisture indicator value: **4 - transition between values 3 and 5**

Reaction indicator value: **8 - transition between values 7 and 9, occurring mostly in calcium-rich conditions**

Nutrient indicator value: **6 - transition between values 5 and 7**

Salinity indicator value: **0 - not salt tolerant, glycophyte**



Habitat and sociology

Occurrence in habitats

1 Vegetation of cliffs, screes and walls

1A Calcareous cliffs: **1 - rare occurrence**

1D Mobile calcareous screes: **1 - rare occurrence**

8 Dry grasslands

8F Thermophilous forest fringe vegetation: **1 - rare occurrence**

11 Heathlands and scrub

11L Tall mesic and xeric shrub: **1 - rare occurrence**

12 Forests

12C Oak-hornbeam forests: **1 - rare occurrence**

12D Ravine forests: **2 - optimum**

12H Peri-Alpidic basiphilous thermophilous oak forests: **1 - rare occurrence**

12J Acidophilous thermophilous oak forests: **1 - rare occurrence**

Affinity to the forest environment

Affinity to the forest environment in Thermophyticum: **1.2 - taxon occurring mainly along forest edges and in forest openings, including forest roads and paths, windthrow sites, burnt sites and forest clearings**

Affinity to the forest environment in Mesophyticum and Oreophyticum: **1.2 - taxon occurring mainly along forest edges and in forest openings, including forest roads and paths, windthrow sites, burnt sites and forest clearings**

Colonization ability

Index of colonization success (ICS): **1**

Distribution and frequency

Continental degree: **5**

Distribution range extension along the continentality gradient: **3**

Elevational belt in the Czech Republic: **colline belt**

Occurrence frequency in the basic grid mapping cells and quadrants of the basic grid mapping cells: **31**

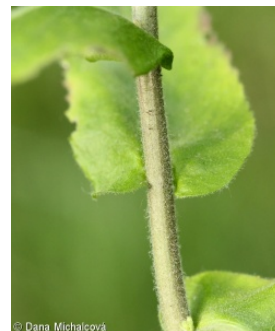
taxon.data.freq_in_quad: **41**

Commonness in vegetation plots from the Czech Republic

Occurrence frequency in vegetation plots: **0 %**

Occurrence frequency in vegetation plots with a cover above 5%: **0 %**

Occurrence frequency in vegetation plots with a cover above 25%: **0 %**
Occurrence frequency in vegetation plots with a cover above 50%: **0 %**
Mean percentage cover in vegetation plots: **2 %**
Maximum percentage cover in vegetation plots: **2 %**
Number of habitats with taxon occurrence in the Czech Republic
Number of narrow habitats in which the taxon occurs: **8**
Number of narrow habitats in which the taxon has its optimum: **1**
Number of broad habitats in which the taxon occurs: **4**
Number of broad habitats in which the taxon has its optimum: **1**



Threats and protection

Red List 2017 (national categories): **C3 - vulnerable taxon**
Red List 2017 (IUCN categories): **VU - vulnerable**
Legal protection: **not protected by law**