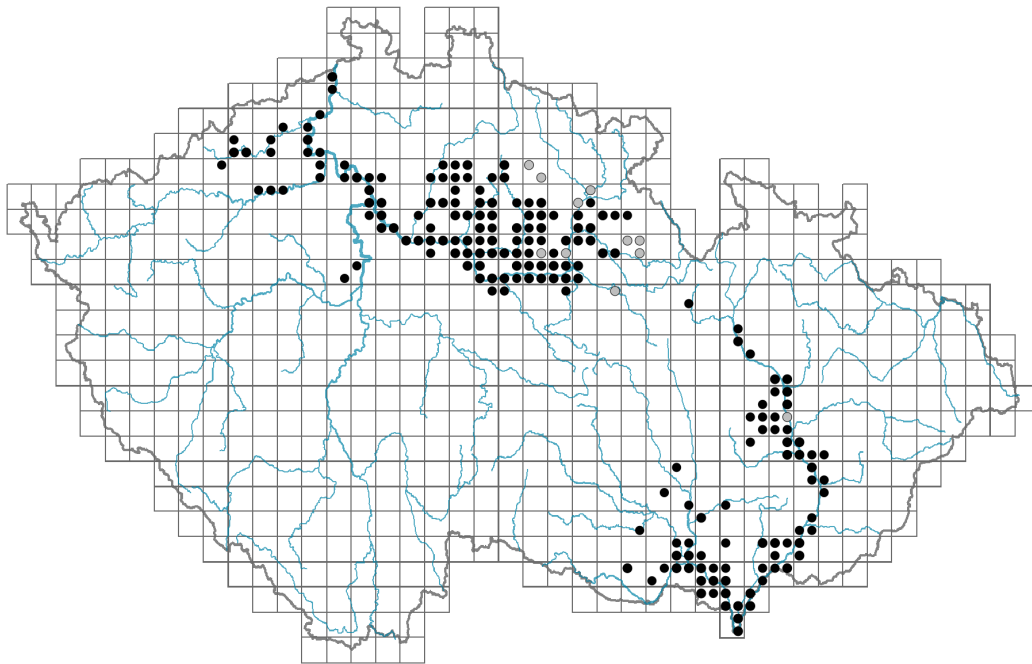


Sium latifolium

Distribution



© Pavel Veselý

Map info

● revised records

○ unrevised records

On the map are not visualized records without the coordinates and records marked as incorrect or doubtful.

Habitus and growth type

Height [m]: **0.8-1.5**

Growth form: **clonal herb**

Life form: **hemicryptophyte**

Life strategy: **CS - competitor/stress-tolerator**

Life strategy (Pierce method based on leaf traits): **C/CR**

Life strategy (Pierce method, C-score): **64.2 %**

Life strategy (Pierce method, S-score): **0 %**

Life strategy (Pierce method, R-score): **35.8 %**

Leaf

Leaf presence and metamorphosis: **leaves present, not modified**

Leaf arrangement (phyllotaxis): **alternate**

Leaf shape: **compound - imparipinnate, compound - bipinnate, compound - tripinnate**

Stipules: **absent**

Petiole: **present**

Leaf life span: **evergreen**

Leaf anatomy: **helomorphic**



© Vladimír Nejšlechba



© Vladimír Nejšlechba

Flower

Flowering period [month]: **July-August**

Flowering phase: **8 Clematis vitalba-Galium sylvaticum (mid-summer)**

Flower colour: **white**

Flower symmetry: **actinomorphic**

Perianth type: **calyx reduced, corolla present**

Perianth fusion: **free**

Calyx fusion: **aposepalous**

Inflorescence type: **umbrella composita**

Dicliny: **andromonoecious**

Generative reproduction type: **facultative allogamy**

Pollination syndrome: **insect-pollination, geitonogamy**



Fruit, seed and dispersal

Fruit type: **dry fruit - cremocarp**

Fruit colour: **brown**

Reproduction type: **by seed/spores and vegetatively**

Dispersal unit (diaspore): **fruit, infrutescence or its part**

Dispersal strategy: **Allium (mainly autochory)**

Myrmecochory: **non-myrmecochorous (b)**

Belowground organs and clonality

Shoot metamorphosis: **rhizome**

Root metamorphosis: **root shoot**

Storage organ: **rhizome**

Type of clonal growth organ: **root with adventitious buds**

Freely dispersible organs of clonal growth: **absent**

Shoot life span (cyclicality): **dicyclic or polycyclic shoots prevailing**

Branching type of stem-derived organs of clonal growth: **sympodial**

Primary root: **absent**

Persistence of the clonal growth organ [year]: **2**

Number of clonal offspring: **4.1**

Lateral spreading distance by clonal growth [m]: **0.1**

Clonal index: **5**

Position of root buds: **lateral roots**

Role of root buds in life-history of a plant: **additive**

Bud bank

Number of buds per shoot at the soil surface (root buds excluded): **5**

Number of buds per shoot at a depth of 0–10 cm (root buds excluded): **10**

Number of buds per shoot at a depth greater than 10 cm (root buds excluded): **0**

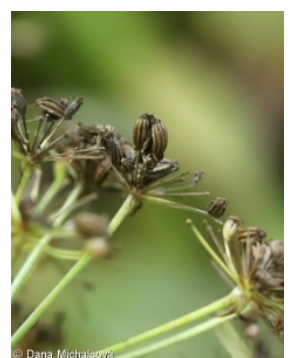
Size of the belowground bud bank (root buds excluded): **15**

Depth of the belowground bud bank (root buds excluded) [cm]: **4**

Number of buds per shoot at the soil surface (root buds included): **5**

Number of buds per shoot at a depth of 0–10 cm (root buds included): **20**

Number of buds per shoot at a depth greater than 10 cm (root buds included): **11**



Size of the belowground bud bank (root buds included): **36**

Depth of the belowground bud bank (root buds included) [cm]: **8**

Trophic mode

Parasitism and mycoheterotrophy: **autotrophic**

Carnivory: **non-carnivorous**

Symbiotic nitrogen fixation: **no nitrogen-fixing symbionts**

Karyology

Chromosome number (2n): **20**

Ploidy level (x): **2**

2C genome size [Mbp]: **4746.71**

1Cx monoploid genome size [Mbp]: **2373.35**

Genomic GC content: **40 %**

Taxon origin

Origin in the Czech Republic: **native**

Ecological indicator values

Ellenberg-type indicator values

Light indicator value: **7 - half-light plant, mostly occurring at full light, but also in the shade up to about 30% of diffuse radiation incident in an open area**

Temperature indicator value: **6 - transition between values 5 and 7**

Moisture indicator value: **10 - aquatic plant that survives long periods without soil flooding**

Reaction indicator value: **7 - indicator of slightly acidic to slightly basic conditions, never occurring in very acidic conditions**

Nutrient indicator value: **7 - occurring at nutrient-rich sites more often than at average sites and only exceptionally at poor sites**

Salinity indicator value: **0 - not salt tolerant, glycophyte**

Indicator values for disturbance

Whole-community disturbance frequency indicator value: **-0.86**

Herb layer disturbance frequency indicator value: **-0.67**

Whole-community disturbance severity indicator value: **0.2**

Herb layer disturbance severity indicator value: **0.24**

Whole-community structure based disturbance indicator value: **0.52**

Herb layer structure-based disturbance indicator value: **0.55**

Habitat and sociology

Occurrence in habitats

3 Aquatic vegetation

3A Macrophytic vegetation of eutrophic and mesotrophic still waters: **1 - rare occurrence**

3B Macrophytic vegetation of water streams: **1 - rare occurrence**



© Pavel Veselý



© Pavel Veselý



© Veronika Kalníková



© Pavel Veselý

4 Wetland and riverine herbaceous vegetation

4A Reed-beds of eutrophic still waters: **2 - optimum**

4C Eutrophic vegetation of muddy substrata: **2 - optimum**

4F Mesotrophic vegetation of muddy substrata: **1 - rare occurrence**

4G Tall-sedge beds: **1 - rare occurrence**

4I Vegetation of nitrophilous annual hygrophilous herbs: **1 - rare occurrence**

6 Meadows and mesic pastures

6D Alluvial meadows of lowland rivers: **1 - rare occurrence**

11 Heathlands and scrub

11I Willow carrs: **1 - rare occurrence**

12 Forests

12A Alder carrs: **1 - rare occurrence**

Affinity to the forest environment

Affinity to the forest environment in Thermophyticum: **2.2 - taxon occurring partly in the forest, but mainly in open vegetation**

Diagnostic taxon

Diagnostic taxon of associations: [TDE03 *Lathyro palustris-Gratioletum officinalis*](#)

Ecological specialization indices

Ecological specialization index for all vegetation types: **5.2**

Ecological specialization index for non-forest vegetation: **5.4**

Colonization ability

Index of colonization success (ICS): **1**

Distribution and frequency

Floristic zone: **boreal, northern temperate, southern temperate, submeridional**

Floristic region: **Europe, Western Asia**

Continental degree: **7**

Distribution range extension along the continentality gradient: **7**

Elevational belt in the Czech Republic: **lowlands, colline belt**

Occurrence frequency in the basic grid mapping cells and quadrants of the basic grid mapping cells: **116**

taxon.data.freq_in_quad: **229**

Commonness in vegetation plots from the Czech Republic

Occurrence frequency in vegetation plots: **0.3 %**

Occurrence frequency in vegetation plots with a cover above 5%: **12.5 %**

Occurrence frequency in vegetation plots with a cover above 25%: **0 %**

Occurrence frequency in vegetation plots with a cover above 50%: **0 %**

Mean percentage cover in vegetation plots: **3.4 %**

Maximum percentage cover in vegetation plots: **13 %**

Number of habitats with taxon occurrence in the Czech Republic

Number of narrow habitats in which the taxon occurs: **10**

Number of narrow habitats in which the taxon has its optimum: **2**

Number of broad habitats in which the taxon occurs: **5**

Number of broad habitats in which the taxon has its optimum: **1**

Threats and protection

Red List 2017 (national categories): **C2b - endangered taxon, rare and declining**

Red List 2017 (IUCN categories): **EN - endangered**

Legal protection: **not protected by law**