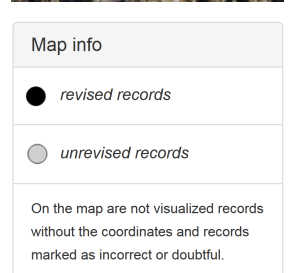
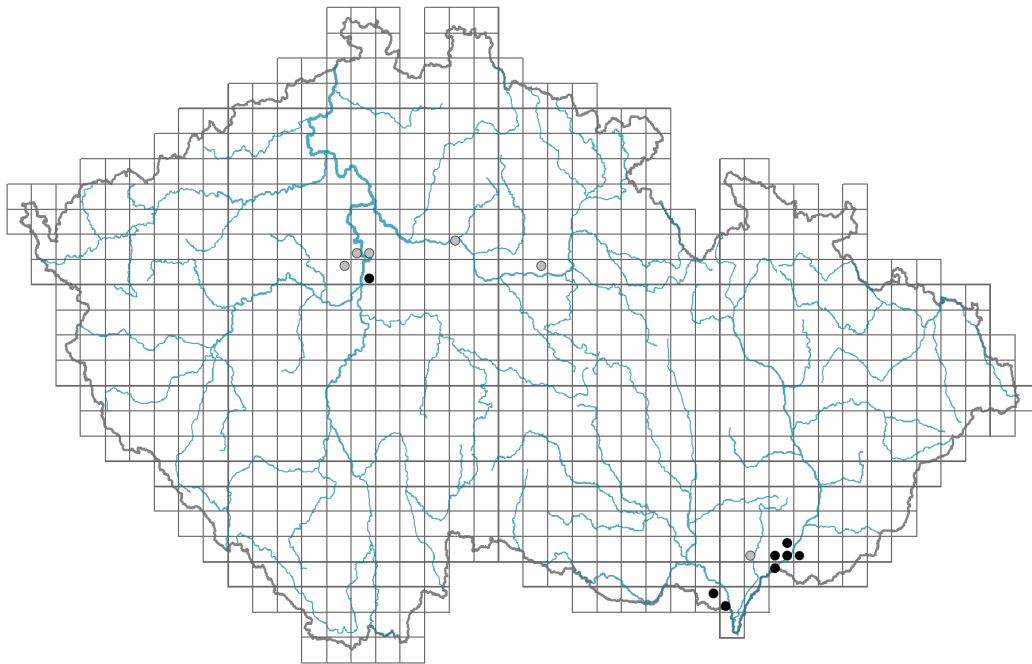


Spergula pentandra

Distribution



Habitus and growth type

Height [m]: **0.1-0.25**

Growth form: **annual herb**

Life form: **therophyte**

Life strategy: **SR - stress-tolerator/ruderal**

Leaf

Leaf presence and metamorphosis: **leaves present, not modified**

Leaf arrangement (phyllotaxis): **verticillate**

Leaf shape: **simple - entire**

Stipules: **present**

Petiole: **absent**

Leaf life span: **overwintering green**

Leaf anatomy: **mesomorphic**

Flower

Flowering period [month]: **March-May**

Flowering phase: **4 Fagus sylvatica-Galeobdolon (start of mid-spring)**

Flower colour: **white**

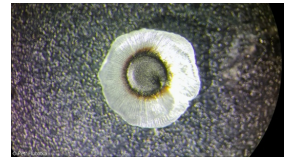
Flower symmetry: **actinomorphic**

Perianth type: **calyx and corolla**

Perianth fusion: **free**
 Calyx fusion: **aposepalous**
 Inflorescence type: **dichasium**
 Dicliny: **synoecious, gynomonoeious, gynodioecious**
 Generative reproduction type: **facultative autogamy**
 Pollination syndrome: **insect-pollination, selfing**

Fruit, seed and dispersal

Fruit type: **dry fruit - capsule**
 Fruit colour: **brown**
 Reproduction type: **only by seed/spores**
 Dispersal unit (diaspore): **seed**
 Dispersal strategy: **Epilobium (mainly anemochory and autochory)**
 Myrmecochory: **non-myrmecochorous (b)**



Belowground organs and clonality

Shoot life span (cyclicality): **monocyclic shoots prevailing**
 Primary root: **present**
 Bud bank
 Number of buds per shoot at the soil surface (root buds excluded): **5**
 Number of buds per shoot at a depth of 0–10 cm (root buds excluded): **0**
 Number of buds per shoot at a depth greater than 10 cm (root buds excluded): **0**
 Size of the belowground bud bank (root buds excluded): **5**
 Depth of the belowground bud bank (root buds excluded) [cm]: **1**
 Number of buds per shoot at the soil surface (root buds included): **5**
 Number of buds per shoot at a depth of 0–10 cm (root buds included): **0**
 Number of buds per shoot at a depth greater than 10 cm (root buds included): **0**
 Size of the belowground bud bank (root buds included): **5**
 Depth of the belowground bud bank (root buds included) [cm]: **1**

Trophic mode

Parasitism and mycoheterotrophy: **autotrophic**
 Carnivory: **non-carnivorous**
 Symbiotic nitrogen fixation: **no nitrogen-fixing symbionts**

Karyology

Chromosome number (2n): **18**
 Ploidy level (x): **2**
 2C genome size [Mbp]: **556.52**
 1Cx monoploid genome size [Mbp]: **278.26**
 Genomic GC content: **40.1 %**

Taxon origin

Origin in the Czech Republic: **native**

Ecological indicator values

Ellenberg-type indicator values

Light indicator value: **9 - full light plant, occurring only in fully irradiated places, not at less than 50% of diffuse radiation incident in an open area**

Temperature indicator value: **6 - transition between values 5 and 7**

Moisture indicator value: **2 - transition between values 1 and 3**

Reaction indicator value: **4 - transition between values 3 and 5**

Nutrient indicator value: **2 - transition between values 1 and 3**

Salinity indicator value: **0 - not salt tolerant, glycophyte**

Habitat and sociology

Occurrence in habitats

9 Sand grasslands and rock-outcrop vegetation

9B Open vegetation of acidic sands: **1 - rare occurrence**

Affinity to the forest environment

Affinity to the forest environment in Thermophyticum: **0 - taxon that does not spontaneously occur in Czech forests**

Affinity to the forest environment in Mesophyticum and Oreophyticum: **0 - taxon that does not spontaneously occur in Czech forests**

Colonization ability

Index of colonization success (ICS): **1**

Distribution and frequency

Floristic zone: **northern temperate, southern temperate, submeridional, meridional**

Floristic region: **Europe**

Distribution range extension along the continentality gradient: **5**

Elevational belt in the Czech Republic: **lowlands**

Occurrence frequency in the basic grid mapping cells and quadrants of the basic grid mapping cells: **12**

taxon.data.freq_in_quad: **15**

Number of habitats with taxon occurrence in the Czech Republic

Number of narrow habitats in which the taxon occurs: **1**

Number of narrow habitats in which the taxon has its optimum: **0**

Number of broad habitats in which the taxon occurs: **1**

Number of broad habitats in which the taxon has its optimum: **0**

Threats and protection

Red List 2017 (national categories): **C1t - critically threatened taxon, declining**

Red List 2017 (IUCN categories): **CR - critically endangered**

Legal protection: **critically threatened taxon**