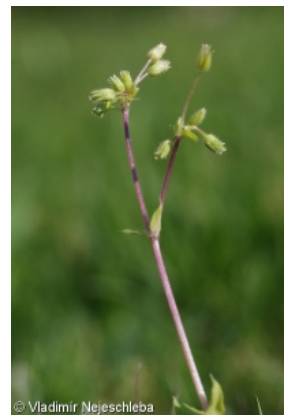
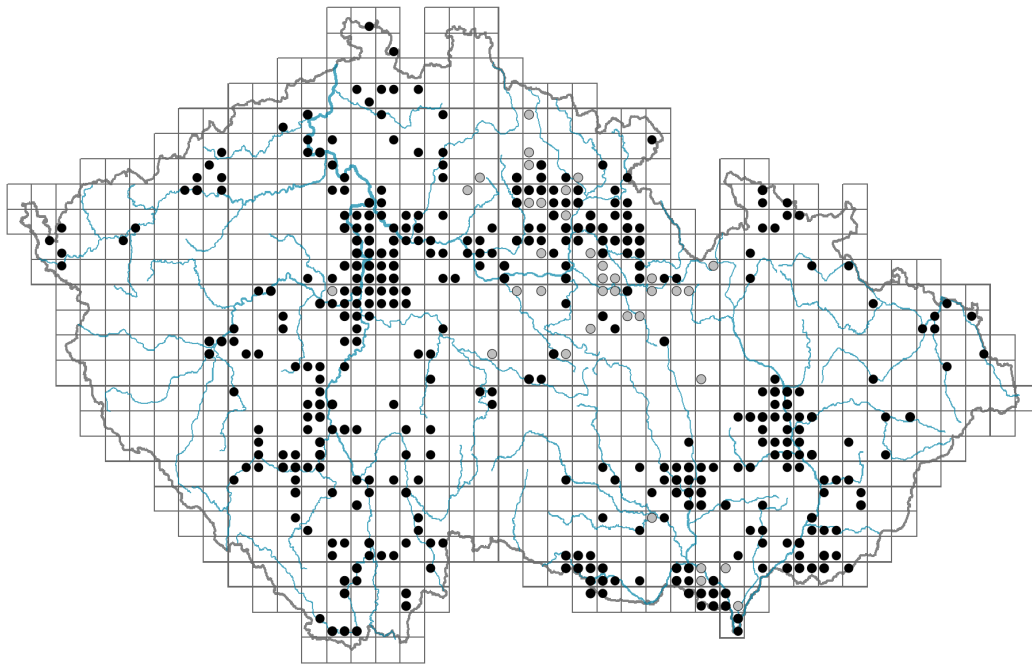


# *Stellaria pallida*

## Distribution



© Vladimír Nejšlechta

### Map info

● revised records

○ unrevised records

On the map are not visualized records without the coordinates and records marked as incorrect or doubtful.



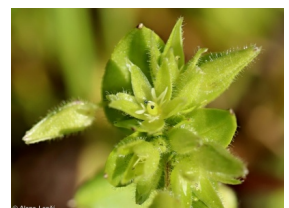
© Vladimír Nejšlechta



© Milan Čížek



© Gažka Paipurna



© Alena Lepš

## Habitus and growth type

Height [m]: **0.07-0.25**

Growth form: **annual herb**

Life form: **therophyte**

Life strategy: **R - ruderal**

Life strategy (Pierce method based on leaf traits): **R**

Life strategy (Pierce method, C-score): **3.8 %**

Life strategy (Pierce method, S-score): **0 %**

Life strategy (Pierce method, R-score): **96.2 %**

## Leaf

Leaf presence and metamorphosis: **leaves present, not modified**

Leaf arrangement (phyllotaxis): **opposite**

Leaf shape: **simple - entire**

Stipules: **absent**

Petiole: **both present and absent**

Leaf life span: **overwintering green**

Leaf anatomy: **helomorphic**

## Flower

Flowering period [month]: **April-May**

Flower colour: **green**  
 Perianth type: **calyx and corolla, corolla reduced or absent**  
 Perianth fusion: **reduced**  
 Calyx fusion: **aposepalous**  
 Inflorescence type: **dichasium**  
 Dicliny: **synoecious**  
 Generative reproduction type: **autogamy**  
 Pollination syndrome: **selfing**

### Fruit, seed and dispersal

Fruit type: **dry fruit - capsule**  
 Reproduction type: **only by seed/spores**  
 Dispersal unit (diaspore): **seed**  
 Dispersal strategy: **Allium (mainly autochory)**  
 Myrmecochory: **non-myrmecochorous (a)**

### Belowground organs and clonality

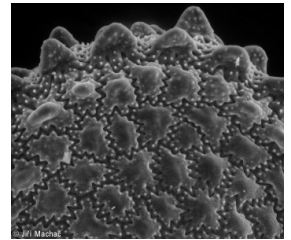
Shoot life span (cyclicality): **monocyclic shoots prevailing**  
 Primary root: **present**  
 Bud bank  
 Number of buds per shoot at the soil surface (root buds excluded): **5**  
 Number of buds per shoot at a depth of 0–10 cm (root buds excluded): **0**  
 Number of buds per shoot at a depth greater than 10 cm (root buds excluded): **0**  
 Size of the belowground bud bank (root buds excluded): **5**  
 Depth of the belowground bud bank (root buds excluded) [cm]: **1**  
 Number of buds per shoot at the soil surface (root buds included): **5**  
 Number of buds per shoot at a depth of 0–10 cm (root buds included): **0**  
 Number of buds per shoot at a depth greater than 10 cm (root buds included): **0**  
 Size of the belowground bud bank (root buds included): **5**  
 Depth of the belowground bud bank (root buds included) [cm]: **1**

### Trophic mode

Parasitism and mycoheterotrophy: **autotrophic**  
 Carnivory: **non-carnivorous**  
 Symbiotic nitrogen fixation: **no nitrogen-fixing symbionts**

### Karyology

Chromosome number (2n): **20**  
 Ploidy level (x): **2**  
 2C genome size [Mbp]: **849.52**  
 1Cx monoploid genome size [Mbp]: **424.76**  
 Genomic GC content: **36.7 %**



## Taxon origin

Origin in the Czech Republic: **native**

## Ecological indicator values

Ellenberg-type indicator values

Light indicator value: **7 - half-light plant, mostly occurring at full light, but also in the shade up to about 30% of diffuse radiation incident in an open area**

Temperature indicator value: **6x - transition between values 5 and 7 (generalist)**

Moisture indicator value: **4x - transition between values 3 and 5 (generalist)**

Reaction indicator value: **6 - transition between values 5 and 7**

Nutrient indicator value: **6 - transition between values 5 and 7**

Salinity indicator value: **1 - salt tolerant, mostly on low-salt to salt-free soils, but occasionally on slightly salty soils**

## Habitat and sociology

Occurrence in habitats

6 Meadows and mesic pastures

6A Mesic Arrhenatherum meadows: **1 - rare occurrence**

6C Pastures and park grasslands: **2 - optimum**

9 Sand grasslands and rock-outcrop vegetation

9C Festuca grasslands on acidic sands: **1 - rare occurrence**

9E Acidophilous vegetation of spring therophytes and succulents: **1 - rare occurrence**

9F Basiphilous vegetation of spring therophytes and succulents: **1 - rare occurrence**

12 Forests

12T Robinia pseudacacia plantations: **1 - rare occurrence**

12U Plantations of broad-leaved non-native trees: **1 - rare occurrence**

12W Pine and larch plantations: **1 - rare occurrence**

13 Anthropogenic vegetation

13A Annual vegetation of ruderal habitats: **2 - optimum**

13C Annual vegetation of trampled habitats: **2 - optimum**

13D Perennial thermophilous ruderal vegetation: **1 - rare occurrence**

Affinity to the forest environment

Affinity to the forest environment in Thermophyticum: **0 - taxon that does not spontaneously occur in Czech forests**

Affinity to the forest environment in Mesophyticum and Oreophyticum: **0 - taxon that does not spontaneously occur in Czech forests**

## Distribution and frequency

Floristic zone: **northern temperate, southern temperate, submeridional, meridional**

Floristic region: **Europe**

Distribution range extension along the continentality gradient: **6**

Elevational belt in the Czech Republic: **lowlands, colline belt**

Occurrence frequency in the basic grid mapping cells and quadrants of the basic grid

mapping cells: 283

taxon.data.freq\_in\_quad: 518

Number of habitats with taxon occurrence in the Czech Republic

Number of narrow habitats in which the taxon occurs: **11**

Number of narrow habitats in which the taxon has its optimum: **3**

Number of broad habitats in which the taxon occurs: **4**

Number of broad habitats in which the taxon has its optimum: **2**

### **Threats and protection**

Red List 2017 (national categories): **taxon is not on the Red List**

Red List 2017 (IUCN categories): **LC(NA) - least concern (taxon is not on the Red List)**

Legal protection: **not protected by law**