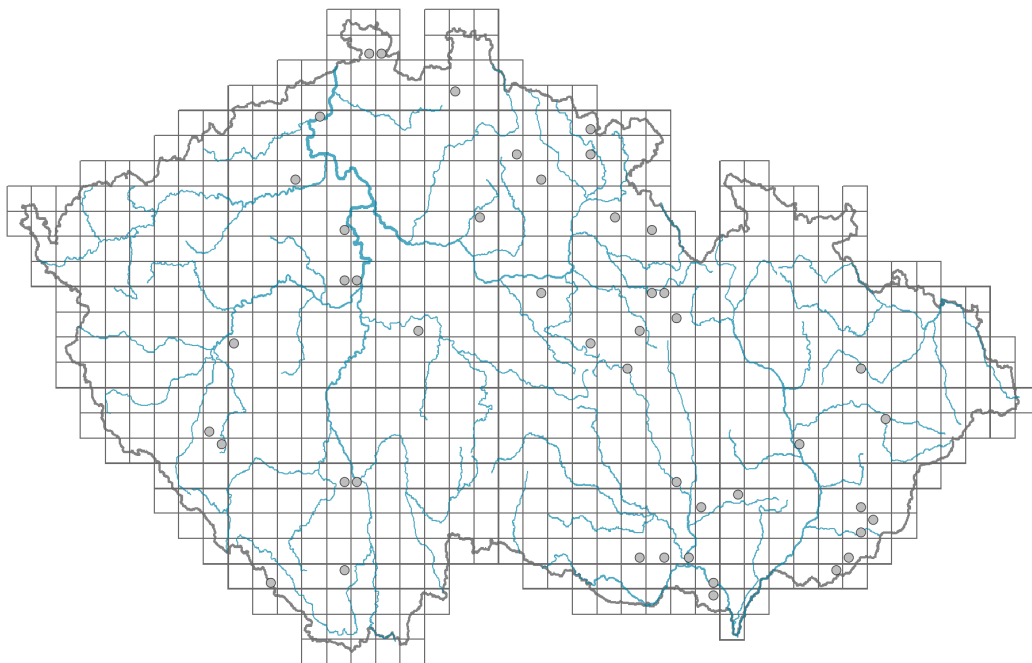


# *Symphotrichum novae-angliae*

## Distribution



© Dana Michalčová

### Map info

● revised records

○ unrevised records

On the map are not visualized records without the coordinates and records marked as incorrect or doubtful.

## Habitus and growth type

Height [m]: **0.6-1.6**

Growth form: **clonal herb**

Life form: **hemicryptophyte**

Life strategy: **C - competitor**

Life strategy (Pierce method based on leaf traits): **SR/CSR**

Life strategy (Pierce method, C-score): **18 %**

Life strategy (Pierce method, S-score): **46.5 %**

Life strategy (Pierce method, R-score): **35.4 %**

## Leaf

Leaf presence and metamorphosis: **leaves present, not modified**

Leaf arrangement (phyllotaxis): **alternate**

Leaf shape: **simple - entire**

Stipules: **absent**

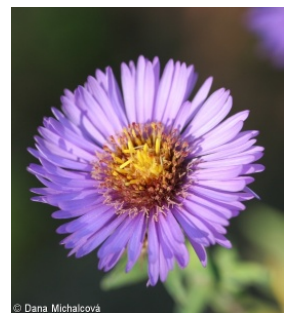
Petiole: **both present and absent**

Leaf life span: **summer green**

Leaf anatomy: **mesomorphic**

## Flower

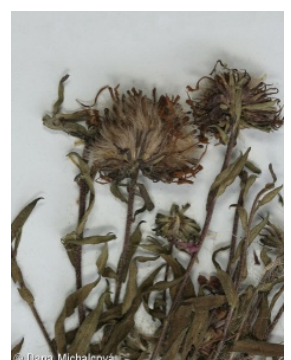
Flowering period [month]: **September-November**



© Dana Michalčová



© Dana Michalčová



© Dana Michalčová

Flowering phase: **9 Hedera helix-Solidago (early autumn)**  
 Flower colour: **yellow, pink, red-violet, blue-violet**  
 Flower symmetry: **actinomorphic, zygomorphic**  
 Perianth type: **calyx reduced, corolla present**  
 Perianth fusion: **fused**  
 Shape of the sympetalous corolla or syntepalous perianth: **ligulate, tubular**  
 Calyx fusion: **pappus**  
 Inflorescence type: **corymbothyrus ex anthodiis compositus**  
 Dicliny: **gynomonoecious**  
 Generative reproduction type: **alogamy self-incompatibility**  
 Pollination syndrome: **insect-pollination, geitonogamy**



### Fruit, seed and dispersal

Fruit type: **dry fruit - achene/cypsela/samara**  
 Fruit colour: **brown**  
 Reproduction type: **by seed/spores and vegetatively**  
 Dispersal unit (diaspore): **fruit, infrutescence or its part**  
 Dispersal strategy: **Epilobium (mainly anemochory and autochory)**  
 Myrmecochory: **non-myrmecochorous (b)**

### Belowground organs and clonality

Shoot metamorphosis: **stolon-like rhizome**  
 Storage organ: **stolon-like rhizome**  
 Type of clonal growth organ: **hypogeogenous rhizome**  
 Freely dispersible organs of clonal growth: **absent**  
 Shoot life span (cyclicality): **monocyclic shoots prevailing**  
 Branching type of stem-derived organs of clonal growth: **sympodial**  
 Primary root: **absent**  
 Persistence of the clonal growth organ [year]: **2**  
 Number of clonal offspring: **6**  
 Lateral spreading distance by clonal growth [m]: **0.13**  
 Clonal index: **5**  
**Bud bank**  
 Number of buds per shoot at the soil surface (root buds excluded): **5**  
 Number of buds per shoot at a depth of 0–10 cm (root buds excluded): **15**  
 Number of buds per shoot at a depth greater than 10 cm (root buds excluded): **0**  
 Size of the belowground bud bank (root buds excluded): **20**  
 Depth of the belowground bud bank (root buds excluded) [cm]: **4**  
 Number of buds per shoot at the soil surface (root buds included): **5**  
 Number of buds per shoot at a depth of 0–10 cm (root buds included): **15**  
 Number of buds per shoot at a depth greater than 10 cm (root buds included): **0**  
 Size of the belowground bud bank (root buds included): **20**  
 Depth of the belowground bud bank (root buds included) [cm]: **4**

### Trophic mode

Parasitism and mycoheterotrophy: **autotrophic**

Carnivory: **non-carnivorous**

Symbiotic nitrogen fixation: **no nitrogen-fixing symbionts**

## Taxon origin

Origin in the Czech Republic: **neophyte**

Invasion status: **casual**

Geographic origin: **North America**

Period of introduction: **Late Modern Period (1800-1950)**

Introduction pathway: **intentional - ornamental**

## Ecological indicator values

Ellenberg-type indicator values

Light indicator value: **6 - transition between values 5 and 7; rarely at less than 20% of diffuse radiation incident in an open area**

Temperature indicator value: **6 - transition between values 5 and 7**

Moisture indicator value: **5 - indicator of fresh soils, focus on soils of average moisture, missing on wet and on soils that frequently dry out**

Reaction indicator value: **7 - indicator of slightly acidic to slightly basic conditions, never occurring in very acidic conditions**

Nutrient indicator value: **7 - occurring at nutrient-rich sites more often than at average sites and only exceptionally at poor sites**

Salinity indicator value: **0 - not salt tolerant, glycophyte**

## Habitat and sociology

Affinity to the forest environment

Affinity to the forest environment in Thermophyticum: **0 - taxon that does not spontaneously occur in Czech forests**

Affinity to the forest environment in Mesophyticum and Oreophyticum: **0 - taxon that does not spontaneously occur in Czech forests**

## Distribution and frequency

Floristic zone: **boreal, northern temperate, southern temperate, submeridional, meridional**

Floristic region: **Eastern America**

Continental degree: **6**

Distribution range extension along the continentality gradient: **6**

Occurrence frequency in the basic grid mapping cells and quadrants of the basic grid mapping cells: **46**

taxon.data.freq\_in\_quad: **47**

## Threats and protection

Red List 2017 (national categories): **taxon is not on the Red List**

Red List 2017 (IUCN categories): **LC(NA) - least concern (taxon is not on the Red List)**

Legal protection: **not protected by law**