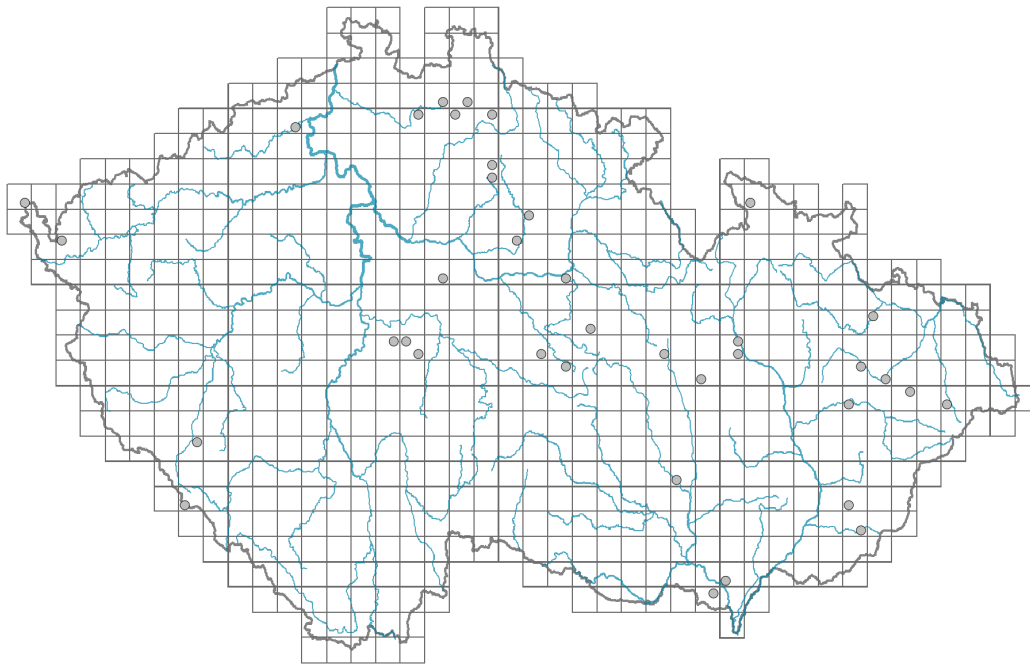


Tilia euchlora

Distribution

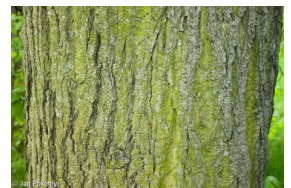


Map info

● revised records

○ unrevised records

On the map are not visualized records without the coordinates and records marked as incorrect or doubtful.



Habitus and growth type

Height [m]: **15-25**

Growth form: **tree**

Life form: **macrophanerophyte**

Leaf

Leaf presence and metamorphosis: **leaves present, not modified**

Leaf arrangement (phyllotaxis): **alternate**

Leaf shape: **simple - entire**

Stipules: **present**

Petiole: **present**

Leaf deciduousness in woody plants: **winter deciduous**

Functional leaf type in woody plants: **broad deciduous or semi-deciduous**

Flower

Flowering period [month]: **July**

Flower colour: **yellow**

Flower symmetry: **actinomorphic**

Perianth type: **calyx and corolla**

Perianth fusion: **free**

Calyx fusion: **aposepalous**

Inflorescence type: **corymbus**

Fruit, seed and dispersal

Fruit type: **dry fruit - nut**

Fruit colour: **brown**

Myrmecochory: **non-myrmecochorous (b)**

Trophic mode

Parasitism and mycoheterotrophy: **autotrophic**

Carnivory: **non-carnivorous**

Symbiotic nitrogen fixation: **no nitrogen-fixing symbionts**

Taxon origin

Origin in the Czech Republic: **cultivated only**

Habitat and sociology

Affinity to the forest environment

Affinity to the forest environment in Thermophyticum: **0 - taxon that does not spontaneously occur in Czech forests**

Affinity to the forest environment in Mesophyticum and Oreophyticum: **0 - taxon that does not spontaneously occur in Czech forests**

Threats and protection

Red List 2017 (national categories): **taxon is not on the Red List**

Red List 2017 (IUCN categories): **LC(NA) - least concern (taxon is not on the Red List)**

Legal protection: **not protected by law**