

Trifolium diffusum

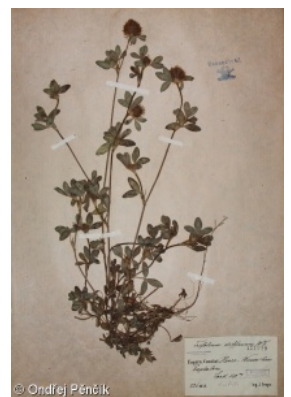
Distribution



Map info

- revised records
- unrevised records

On the map are not visualized records without the coordinates and records marked as incorrect or doubtful.



Habitus and growth type

Height [m]: **0.2-0.4**

Life form: **therophyte**

Leaf

Leaf presence and metamorphosis: **leaves present, not modified**

Leaf arrangement (phyllotaxis): **alternate**

Leaf shape: **compound - ternate**

Stipules: **present**

Petiole: **present**

Flower

Flowering period [month]: **June-July**

Flower colour: **white, pink**

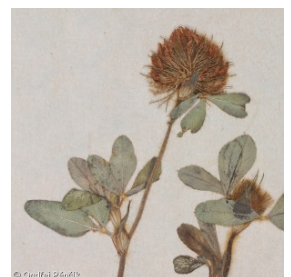
Flower symmetry: **zygomorphic**

Perianth type: **calyx and corolla**

Perianth fusion: **free**

Calyx fusion: **synsepalous**

Inflorescence type: **capitulum**



Fruit, seed and dispersal

Fruit type: **dry fruit - legume**

Dispersal unit (diaspore): **seed, fruit, infructescence or its part**

Dispersal strategy: **Allium (mainly autochory)**

Myrmecochory: **non-myrmecochorous (b)**



Trophic mode

Parasitism and mycoheterotrophy: **autotrophic**

Carnivory: **non-carnivorous**

Symbiotic nitrogen fixation: **symbiosis with rhizobia**



Taxon origin

Origin in the Czech Republic: **neophyte**

Invasion status: **casual**

Geographic origin: **Europe, Mediterranean, Asia**

Year of the first record in the wild: **1923**

Year of the last record: **1923**

Period of introduction: **Recent Past (1950-2000)**

Introduction pathway: **unintentional - anthropogenic**



Habitat and sociology

Affinity to the forest environment

Affinity to the forest environment in Thermophyticum: **0 - taxon that does not spontaneously occur in Czech forests**

Affinity to the forest environment in Mesophyticum and Oreophyticum: **0 - taxon that does not spontaneously occur in Czech forests**

Threats and protection

Red List 2017 (national categories): **A3 - extinct or missing taxon (uncertain case)**

Red List 2017 (IUCN categories): **NA - not applicable**

Legal protection: **not protected by law**