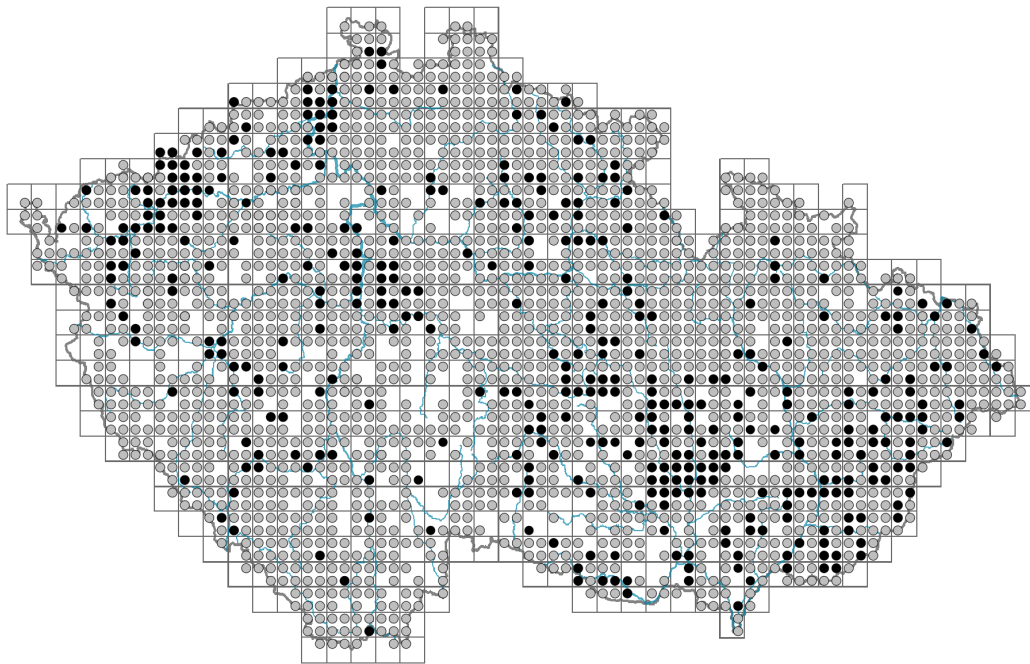


# *Vicia sepium*

## Distribution



© Pavel Veselý

### Map info

● revised records

○ unrevised records

On the map are not visualized records without the coordinates and records marked as incorrect or doubtful.

## Habitus and growth type

Height [m]: **0.3-0.7**

Growth form: **clonal herb**

Life form: **hemicryptophyte**

Life strategy: **C - competitor**

Life strategy (Pierce method based on leaf traits): **R/CSR**

Life strategy (Pierce method, C-score): **29.8 %**

Life strategy (Pierce method, S-score): **10.6 %**

Life strategy (Pierce method, R-score): **59.6 %**

## Leaf

Leaf presence and metamorphosis: **leaves present, not modified**

Leaf arrangement (phyllotaxis): **alternate**

Leaf shape: **compound - paripinnate**

Stipules: **present**

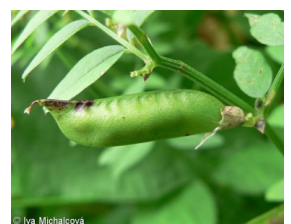
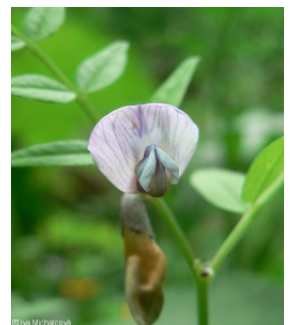
Petiole: **present**

Leaf life span: **evergreen**

Leaf anatomy: **mesomorphic**

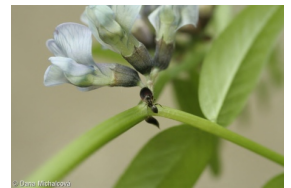
## Flower

Flowering period [month]: **May-August**



© Pavel Veselý

Flowering phase: **5 Sorbus aucuparia-Galium odoratum (end of mid-spring)**  
 Flower colour: **violet, blue-violet**  
 Flower symmetry: **zygomorphic**  
 Perianth type: **calyx and corolla**  
 Perianth fusion: **free**  
 Calyx fusion: **synsepalous**  
 Inflorescence type: **racemus**  
 Dicliny: **synoecious**  
 Generative reproduction type: **mixed mating**  
 Pollination syndrome: **insect-pollination, selfing**  
 Pollinator spectrum: **bumblebees (honeybee, solitary bees, other Hymenoptera, hoverflies, flies s. l., other Diptera, butterflies, beetles, other pollinators)**



### Fruit, seed and dispersal

Fruit type: **dry fruit - legume**  
 Fruit colour: **brown, black**  
 Reproduction type: **mostly by seed/spores, rarely vegetatively**  
 Dispersal unit (diaspore): **seed**  
 Dispersal strategy: **Allium (mainly autochory)**  
 Myrmecochory: **non-myrmecochorous (b)**



### Belowground organs and clonality

Shoot metamorphosis: **stolon**  
 Storage organ: **stolon**  
 Type of clonal growth organ: **hypogeogenous rhizome**  
 Freely dispersible organs of clonal growth: **absent**  
 Shoot life span (cyclicality): **monocyclic shoots prevailing**  
 Branching type of stem-derived organs of clonal growth: **sympodial**  
 Primary root: **absent**  
 Persistence of the clonal growth organ [year]: **4**  
 Number of clonal offspring: **2.7**  
 Lateral spreading distance by clonal growth [m]: **0.13**  
 Clonal index: **4**

### Bud bank

Number of buds per shoot at the soil surface (root buds excluded): **5**  
 Number of buds per shoot at a depth of 0–10 cm (root buds excluded): **15**  
 Number of buds per shoot at a depth greater than 10 cm (root buds excluded): **0**  
 Size of the belowground bud bank (root buds excluded): **20**  
 Depth of the belowground bud bank (root buds excluded) [cm]: **4**  
 Number of buds per shoot at the soil surface (root buds included): **5**  
 Number of buds per shoot at a depth of 0–10 cm (root buds included): **15**  
 Number of buds per shoot at a depth greater than 10 cm (root buds included): **0**  
 Size of the belowground bud bank (root buds included): **20**  
 Depth of the belowground bud bank (root buds included) [cm]: **4**

## Trophic mode

Parasitism and mycoheterotrophy: **autotrophic**

Carnivory: **non-carnivorous**

Symbiotic nitrogen fixation: **symbiosis with rhizobia**

## Karyology

Chromosome number (2n): **14**

Ploidy level (x): **2**

2C genome size [Mbp]: **6334.09**

1Cx monoploid genome size [Mbp]: **3167.04**

Genomic GC content: **39.9 %**

## Taxon origin

Origin in the Czech Republic: **native**

## Ecological indicator values

Ellenberg-type indicator values

Light indicator value: **6 - transition between values 5 and 7; rarely at less than 20% of diffuse radiation incident in an open area**

Temperature indicator value: **5x - moderate heat indicator, occurring from lowland to montane belt, mainly in submontane-temperate areas (generalist)**

Moisture indicator value: **5 - indicator of fresh soils, focus on soils of average moisture, missing on wet and on soils that frequently dry out**

Reaction indicator value: **6 - transition between values 5 and 7**

Nutrient indicator value: **6 - transition between values 5 and 7**

Salinity indicator value: **0 - not salt tolerant, glycophyte**

Indicator values for disturbance

Whole-community disturbance frequency indicator value: **-1.39**

Herb layer disturbance frequency indicator value: **-0.42**

Whole-community disturbance severity indicator value: **0.37**

Herb layer disturbance severity indicator value: **0.34**

Whole-community structure based disturbance indicator value: **0.33**

Herb layer structure-based disturbance indicator value: **0.45**

## Habitat and sociology

Occurrence in habitats

2 Alpine and subalpine grasslands

2B Subalpine tall-forb and tall-grass vegetation: **1 - rare occurrence**

4 Wetland and riverine herbaceous vegetation

4D Riverine reed vegetation: **1 - rare occurrence**

4G Tall-sedge beds: **1 - rare occurrence**

4K Petasites fringes of montane brooks: **1 - rare occurrence**

4L Nitrophilous herbaceous fringes of lowland rivers: **1 - rare occurrence**

## 6 Meadows and mesic pastures

6A Mesic Arrhenatherum meadows: **2 - optimum**

6B Montane mesic meadows: **2 - optimum**

6C Pastures and park grasslands: **1 - rare occurrence**

6D Alluvial meadows of lowland rivers: **2 - optimum**

6E Wet Cirsium meadows: **1 - rare occurrence**

6F Intermittently wet Molinia meadows: **1 - rare occurrence**

## 7 Acidophilous grasslands

7A Subalpine and montane acidophilous grasslands: **1 - rare occurrence**

7B Submontane Nardus grasslands: **1 - rare occurrence**

## 8 Dry grasslands

8D Broad-leaved dry grasslands: **1 - rare occurrence**

8F Thermophilous forest fringe vegetation: **2 - optimum**

## 11 Heathlands and scrub

11H Subalpine deciduous scrub: **1 - rare occurrence**

11L Tall mesic and xeric shrub: **1 - rare occurrence**

11R Scrub and pioneer woodland of forests clearings: **1 - rare occurrence**

## 12 Forests

12B Alluvial forests: **1 - rare occurrence**

12C Oak-hornbeam forests: **2 - optimum**

12D Ravine forests: **1 - rare occurrence**

12E Herb-rich beech forests: **1 - rare occurrence**

12F Limestone beech forests: **1 - rare occurrence**

12G Acidophilous beech forests: **1 - rare occurrence**

12H Peri-Alpidic basiphilous thermophilous oak forests: **1 - rare occurrence**

12I Sub-continental thermophilous oak forests: **2 - optimum**

12J Acidophilous thermophilous oak forests: **1 - rare occurrence**

12K Acidophilous oak forests: **1 - rare occurrence**

12O Peri-Alpidic pine forests: **1 - rare occurrence**

12T Robinia pseudacacia plantations: **1 - rare occurrence**

12U Plantations of broad-leaved non-native trees: **1 - rare occurrence**

12V Spruce plantations: **1 - rare occurrence**

12W Pine and larch plantations: **1 - rare occurrence**

## 13 Anthropogenic vegetation

13A Annual vegetation of ruderal habitats: **1 - rare occurrence**

13B Annual vegetation of arable land: **1 - rare occurrence**

13D Perennial thermophilous ruderal vegetation: **1 - rare occurrence**

13E Perennial nitrophilous herbaceous vegetation of mesic sites: **2 - optimum**

13F Herbaceous vegetation of forests clearings and Rubus scrub: **1 - rare occurrence**

## Affinity to the forest environment

Affinity to the forest environment in Thermophyticum: **2.1 - taxon occurring both in the forest and open vegetation**

Affinity to the forest environment in Mesophyticum and Oreophyticum: **2.1 - taxon occurring both in the forest and open vegetation**

## Diagnostic taxon

Diagnostic taxon of associations: [LCB02 Carici fritschii-Quercetum roboris](#)

## Constant taxon

Constant taxon of associations: [LCB02 Carici fritschii-Quercetum roboris](#)

## Ecological specialization indices

Ecological specialization index for all vegetation types: **4.2**

Ecological specialization index for non-forest vegetation: **5**

Ecological specialization index for forest vegetation: **5.2**

## Colonization ability

Index of colonization success (ICS): **6**

Index of colonization potential (ICP): **4**

Optimum successional age [years]: **32**

## Distribution and frequency

Floristic zone: **boreal, northern temperate, southern temperate, submeridional, meridional**

Floristic region: **Europe, Western Siberia**

Distribution range extension along the continentality gradient: **6**

Elevational belt in the Czech Republic: **lowlands, colline belt, submontane belt, montane belt, subalpine belt**

Occurrence frequency in the basic grid mapping cells and quadrants of the basic grid mapping cells: 661

taxon.data.freq\_in\_quad: 2175

## Commonness in vegetation plots from the Czech Republic

Occurrence frequency in vegetation plots: **2.4 %**

Occurrence frequency in vegetation plots with a cover above 5%: **4 %**

Occurrence frequency in vegetation plots with a cover above 25%: **0.1 %**

Occurrence frequency in vegetation plots with a cover above 50%: **0 %**

Mean percentage cover in vegetation plots: **2.5 %**

Maximum percentage cover in vegetation plots: **38 %**

## Number of habitats with taxon occurrence in the Czech Republic

Number of narrow habitats in which the taxon occurs: **38**

Number of narrow habitats in which the taxon has its optimum: **7**

Number of broad habitats in which the taxon occurs: **8**

Number of broad habitats in which the taxon has its optimum: **4**

## Threats and protection

Red List 2017 (national categories): **taxon is not on the Red List**

Red List 2017 (IUCN categories): **LC(NA) - least concern (taxon is not on the Red List)**

Legal protection: **not protected by law**