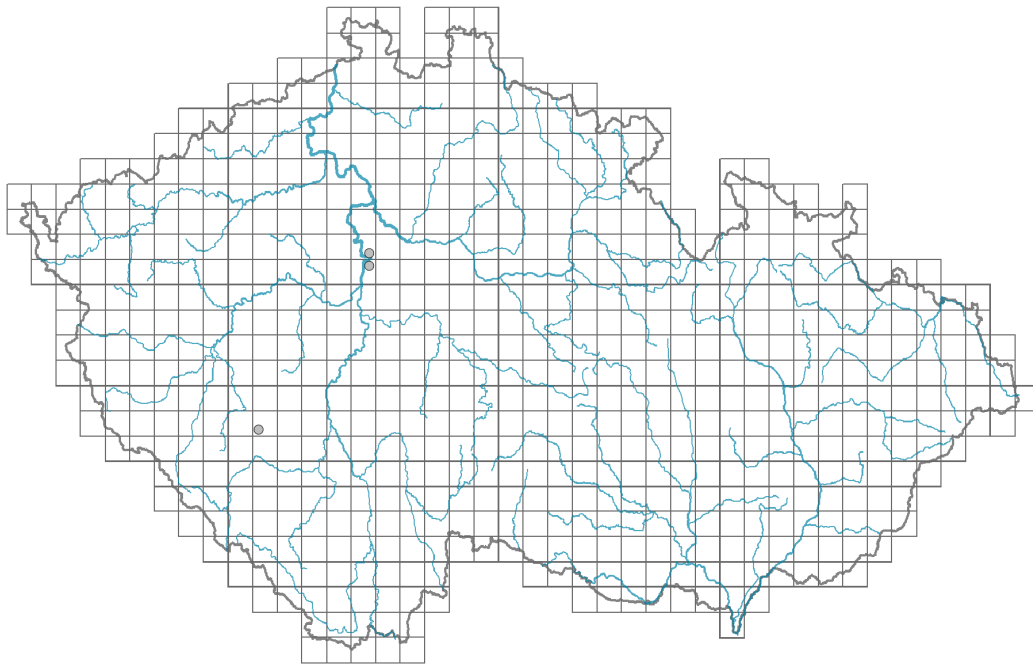


Geranium molle subsp. *molle*

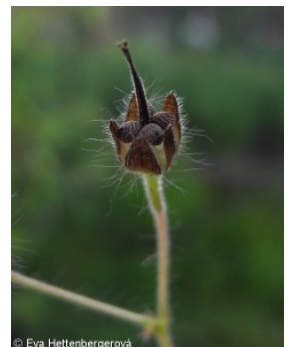
Distribution



Map info

- revised records
- unrevised records

On the map are not visualized records without the coordinates and records marked as incorrect or doubtful.



Habitus and growth type

Height [m]: **0.1-0.4**

Growth form: **annual herb**

Life form: **therophyte**

Life strategy: **R - ruderal**

Life strategy (Pierce method based on leaf traits): **R/CSR**

Life strategy (Pierce method, C-score): **27.5 %**

Life strategy (Pierce method, S-score): **14.1 %**

Life strategy (Pierce method, R-score): **58.4 %**

Leaf

Leaf presence and metamorphosis: **leaves present, not modified**

Leaf arrangement (phyllotaxis): **alternate, opposite, rosulate**

Leaf shape: **simple - palmately divided**

Stipules: **present**

Petiole: **present**

Leaf life span: **overwintering green**

Leaf anatomy: **mesomorphic**

Flower

Flowering period [month]: **May-August**

Flowering phase: **6 Cornus sanguinea-Melica uniflora (start of early summer)**

Flower colour: **red-violet**

Flower symmetry: **actinomorphic**

Perianth type: **calyx and corolla**

Perianth fusion: **free**

Calyx fusion: **aposepalous**

Inflorescence type: **dichasium**

Dicliny: **synoecious**

Generative reproduction type: **facultative autogamy**

Pollination syndrome: **insect-pollination, selfing**

Pollinator spectrum: **solitary bees, hoverflies, flies s. l., other Diptera, beetles, nitidulids, other pollinators, unknown**

Fruit, seed and dispersal

Fruit type: **dry fruit - dry schizocarp with an apical beak**

Reproduction type: **only by seed/spores**

Dispersal unit (diaspore): **seed, fruit, infructescence or its part**

Dispersal strategy: **Allium (mainly autochory)**

Myrmecochory: **non-myrmecochorous (b)**

Belowground organs and clonality

Root metamorphosis: **primary storage root**

Storage organ: **primary storage root**

Shoot life span (cyclicality): **monocyclic shoots prevailing**

Primary root: **present**

Bud bank

Number of buds per shoot at the soil surface (root buds excluded): **5**

Number of buds per shoot at a depth of 0–10 cm (root buds excluded): **3**

Number of buds per shoot at a depth greater than 10 cm (root buds excluded): **0**

Size of the belowground bud bank (root buds excluded): **8**

Depth of the belowground bud bank (root buds excluded) [cm]: **2**

Number of buds per shoot at the soil surface (root buds included): **5**

Number of buds per shoot at a depth of 0–10 cm (root buds included): **3**

Number of buds per shoot at a depth greater than 10 cm (root buds included): **0**

Size of the belowground bud bank (root buds included): **8**

Depth of the belowground bud bank (root buds included) [cm]: **2**

Trophic mode

Parasitism and mycoheterotrophy: **autotrophic**

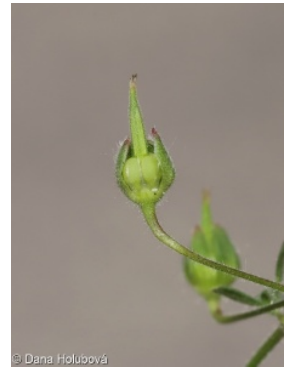
Carnivory: **non-carnivorous**

Symbiotic nitrogen fixation: **no nitrogen-fixing symbionts**

Karyology

Chromosome number (2n): **26**

Ploidy level (x): **2**



2C genome size [Mbp]: **808.4**
1Cx monoploid genome size [Mbp]: **404.2**
Genomic GC content: **40.8 %**

Taxon origin

Origin in the Czech Republic: **archaeophyte**
Invasion status: **naturalized**
Geographic origin: **Mediterranean**
Period of introduction: **Early Middle Ages (550-1200)**
Introduction pathway: **unintentional - agriculture, unintentional - anthropogenic**

Ecological indicator values

Ellenberg-type indicator values

Light indicator value: **8 - light plant, only exceptionally occurring at less than 40% of diffuse radiation incident in an open area**

Temperature indicator value: **7 - heat indicator, occurring in relatively warm lowlands**

Moisture indicator value: **4 - transition between values 3 and 5**

Reaction indicator value: **7 - indicator of slightly acidic to slightly basic conditions, never occurring in very acidic conditions**

Nutrient indicator value: **6 - transition between values 5 and 7**

Salinity indicator value: **0 - not salt tolerant, glycophyte**

Habitat and sociology

Occurrence in habitats

6 Meadows and mesic pastures

6C Pastures and park grasslands: **1 - rare occurrence**

11 Heathlands and scrub

11L Tall mesic and xeric shrub: **1 - rare occurrence**

11N Low xeric scrub: **1 - rare occurrence**

11R Scrub and pioneer woodland of forests clearings: **1 - rare occurrence**

12 Forests

12T Robinia pseudacacia plantations: **1 - rare occurrence**

13 Anthropogenic vegetation

13A Annual vegetation of ruderal habitats: **2 - optimum**

13C Annual vegetation of trampled habitats: **1 - rare occurrence**

13D Perennial thermophilous ruderal vegetation: **1 - rare occurrence**

Affinity to the forest environment

Affinity to the forest environment in Thermophyticum: **0 - taxon that does not spontaneously occur in Czech forests**

Affinity to the forest environment in Mesophyticum and Oreophyticum: **0 - taxon that does not spontaneously occur in Czech forests**

Colonization ability

Index of colonization success (ICS): **1**



Distribution and frequency

Floristic zone: **northern temperate, southern temperate, submeridional, meridional**

Floristic region: **Europe, Western Asia**

Continentality degree: **4**

Distribution range extension along the continentality gradient: **4**

Elevational belt in the Czech Republic: **lowlands, colline belt**

Occurrence frequency in the basic grid mapping cells and quadrants of the basic grid mapping cells: 170

taxon.data.freq_in_quad: 216

Commonness in vegetation plots from the Czech Republic

Occurrence frequency in vegetation plots: **0 %**

Occurrence frequency in vegetation plots with a cover above 5%: **0 %**

Occurrence frequency in vegetation plots with a cover above 25%: **0 %**

Occurrence frequency in vegetation plots with a cover above 50%: **0 %**

Mean percentage cover in vegetation plots: **1.8 %**

Maximum percentage cover in vegetation plots: **2 %**

Number of habitats with taxon occurrence in the Czech Republic

Number of narrow habitats in which the taxon occurs: **8**

Number of narrow habitats in which the taxon has its optimum: **1**

Number of broad habitats in which the taxon occurs: **4**

Number of broad habitats in which the taxon has its optimum: **1**

Threats and protection

Red List 2017 (national categories): **C2t - endangered taxon, declining**

Red List 2017 (IUCN categories): **NT - near threatened**

Legal protection: **not protected by law**