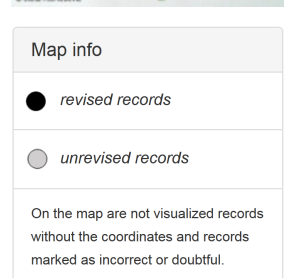
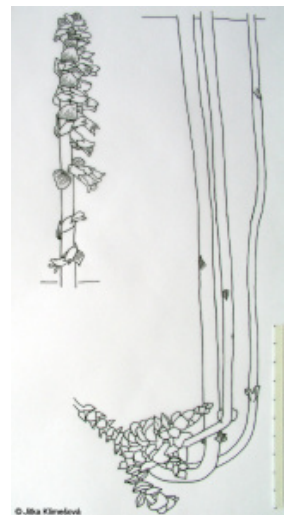
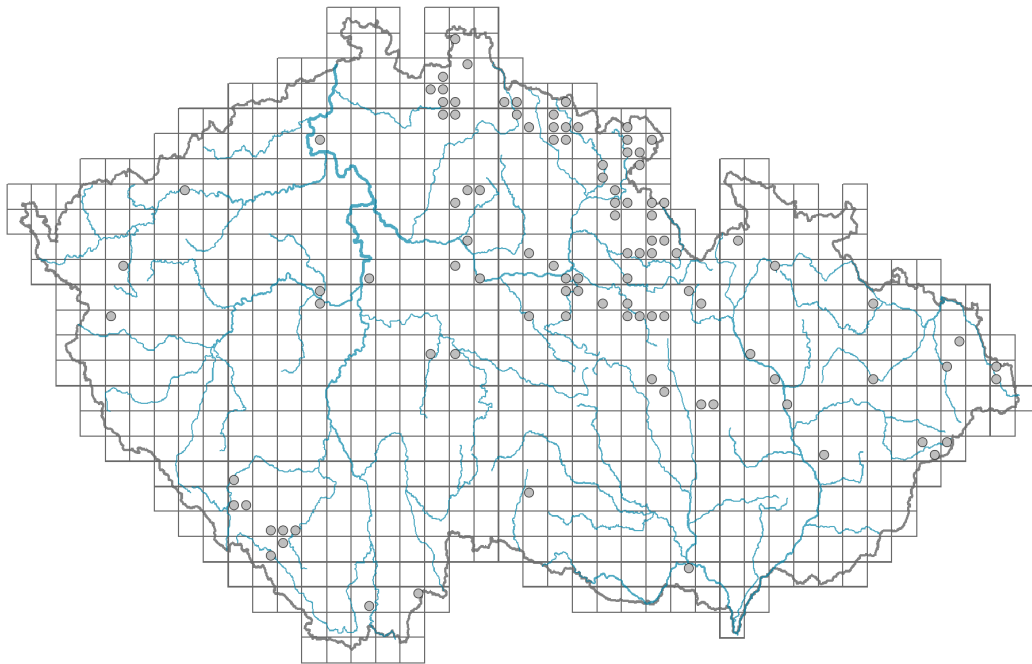


Lathraea squamaria subsp. *squamaria*

Distribution



Habitus and growth type

Height [m]: **0.05-0.2**

Growth form: **clonal herb**

Life form: **geophyte**

Leaf

Leaf presence and metamorphosis: **leaves reduced to scales**

Leaf shape: **simple - entire**

Stipules: **absent**

Leaf anatomy: **mesomorphic**

Flower

Flowering period [month]: **April-May**

Flower colour: **pink-violet**

Flower symmetry: **zygomorphic**

Perianth type: **calyx and corolla**

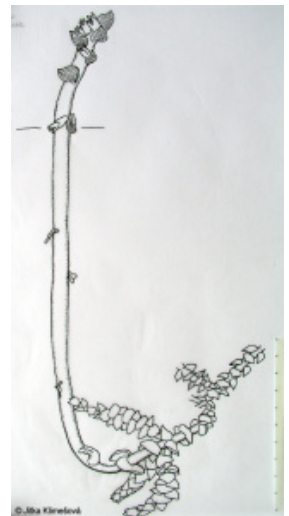
Perianth fusion: **fused**

Shape of the sympetalous corolla or syntepalous perianth: **bilabiate**

Calyx fusion: **synsepalous**

Inflorescence type: **racemus**

Dicliny: **synoecious**



Generative reproduction type: **mixed mating**

Pollination syndrome: **wind-pollination, insect-pollination**

Fruit, seed and dispersal

Fruit type: **dry fruit - capsule**

Fruit colour: **brown**

Reproduction type: **by seed/spores and vegetatively**

Dispersal unit (diaspore): **seed**

Dispersal strategy: **Allium (mainly autochory)**

Myrmecochory: **myrmecochorous**

Belowground organs and clonality

Shoot metamorphosis: **rhizome**

Storage organ: **rhizome**

Type of clonal growth organ: **hypogeogenous rhizome**

Freely dispersible organs of clonal growth: **absent**

Shoot life span (cyclicality): **monocyclic shoots prevailing**

Branching type of stem-derived organs of clonal growth: **sympodial**

Primary root: **absent**

Persistence of the clonal growth organ [year]: **4**

Number of clonal offspring: **2.7**

Lateral spreading distance by clonal growth [m]: **0.09**

Clonal index: **4**

Bud bank

Number of buds per shoot at the soil surface (root buds excluded): **5**

Number of buds per shoot at a depth of 0–10 cm (root buds excluded): **5**

Number of buds per shoot at a depth greater than 10 cm (root buds excluded): **5**

Size of the belowground bud bank (root buds excluded): **15**

Depth of the belowground bud bank (root buds excluded) [cm]: **7**

Number of buds per shoot at the soil surface (root buds included): **5**

Number of buds per shoot at a depth of 0–10 cm (root buds included): **5**

Number of buds per shoot at a depth greater than 10 cm (root buds included): **5**

Size of the belowground bud bank (root buds included): **15**

Depth of the belowground bud bank (root buds included) [cm]: **7**

Trophic mode

Parasitism and mycoheterotrophy: **root holoparasite**

Carnivory: **non-carnivorous**

Symbiotic nitrogen fixation: **no nitrogen-fixing symbionts**

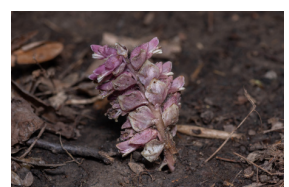
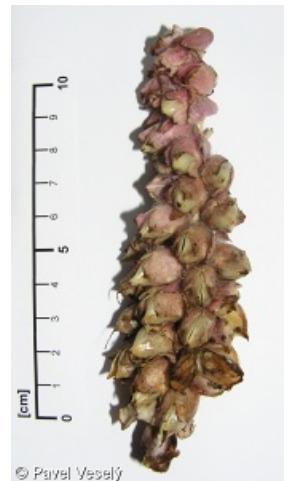
Karyology

Chromosome number (2n): **36**

Ploidy level (x): **4**

2C genome size [Mbp]: **1121.56**

1Cx monoploid genome size [Mbp]: **280.39**



Genomic GC content: **38.8 %**

Taxon origin

Origin in the Czech Republic: **native**

Ecological indicator values

Ellenberg-type indicator values

Light indicator value: **3 - shade plant, usually occurring where the incident radiation is less than 5% of that in an open area, but also at sunnier sites**

Temperature indicator value: **5 - moderate heat indicator, occurring from lowland to montane belt, mainly in submontane-temperate areas**

Moisture indicator value: **6 - transition between values 5 and 7**

Reaction indicator value: **7 - indicator of slightly acidic to slightly basic conditions, never occurring in very acidic conditions**

Nutrient indicator value: **7 - occurring at nutrient-rich sites more often than at average sites and only exceptionally at poor sites**

Salinity indicator value: **0 - not salt tolerant, glycophyte**

Indicator values for disturbance

Whole-community disturbance frequency indicator value: **-1.95**

Herb layer disturbance frequency indicator value: **-0.71**

Whole-community disturbance severity indicator value: **0.25**

Herb layer disturbance severity indicator value: **0.08**

Whole-community structure based disturbance indicator value: **0.08**

Herb layer structure-based disturbance indicator value: **0.19**

Habitat and sociology

Occurrence in habitats

11 Heathlands and scrub

11J Willow galleries of loamy and sandy river banks: **1 - rare occurrence**

11R Scrub and pioneer woodland of forests clearings: **1 - rare occurrence**

12 Forests

12B Alluvial forests: **2 - optimum**

12C Oak-hornbeam forests: **2 - optimum**

12D Ravine forests: **2 - optimum**

12E Herb-rich beech forests: **1 - rare occurrence**

12U Plantations of broad-leaved non-native trees: **1 - rare occurrence**

Affinity to the forest environment

Affinity to the forest environment in Thermophyticum: **1.1 - taxon occurring mainly in the closed forest**

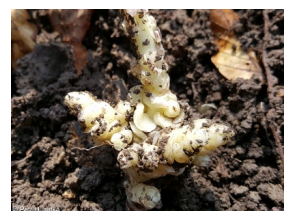
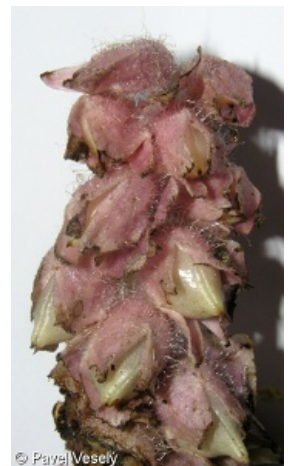
Affinity to the forest environment in Mesophyticum and Oreophyticum: **1.1 - taxon occurring mainly in the closed forest**

Ecological specialization indices

Ecological specialization index for all vegetation types: **5.7**

Ecological specialization index for non-forest vegetation: **5.1**

Ecological specialization index for forest vegetation: **5.9**



Colonization ability

Index of colonization success (ICS): **1**

Index of colonization potential (ICP): **1**

Distribution and frequency

Floristic zone: **northern temperate, southern temperate, submeridional, meridional**

Floristic region: **Europe, Western Asia**

Continental degree: **4**

Distribution range extension along the continentality gradient: **4**

Elevational belt in the Czech Republic: **lowlands, colline belt, submontane belt, montane belt**

Occurrence frequency in the basic grid mapping cells and quadrants of the basic grid mapping cells: 454

taxon.data.freq_in_quad: 967

Commonness in vegetation plots from the Czech Republic

Occurrence frequency in vegetation plots: **0.1 %**

Occurrence frequency in vegetation plots with a cover above 5%: **0 %**

Occurrence frequency in vegetation plots with a cover above 25%: **0 %**

Occurrence frequency in vegetation plots with a cover above 50%: **0 %**

Mean percentage cover in vegetation plots: **1.6 %**

Maximum percentage cover in vegetation plots: **3 %**

Number of habitats with taxon occurrence in the Czech Republic

Number of narrow habitats in which the taxon occurs: **7**

Number of narrow habitats in which the taxon has its optimum: **3**

Number of broad habitats in which the taxon occurs: **2**

Number of broad habitats in which the taxon has its optimum: **1**

Threats and protection

Red List 2017 (national categories): **taxon is not on the Red List**

Red List 2017 (IUCN categories): **LC(NA) - least concern (taxon is not on the Red List)**

Legal protection: **not protected by law**