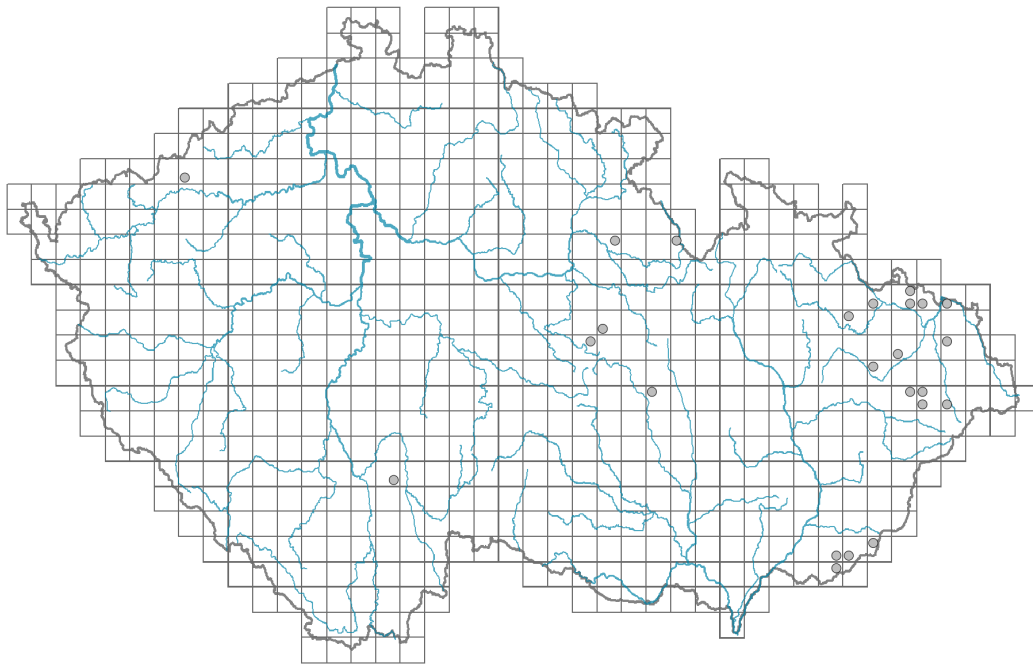


Veronica chamaedrys subsp. *chamaedrys*

Distribution



Map info

● revised records

○ unrevised records

On the map are not visualized records without the coordinates and records marked as incorrect or doubtful.

Habitus and growth type

Height [m]: **0.15-0.3**

Growth form: **clonal herb**

Life form: **hemicryptophyte (chamaephyte)**

Life strategy: **CSR - competitor/stress-tolerator/ruderal**

Leaf

Leaf presence and metamorphosis: **leaves present, not modified**

Leaf arrangement (phyllotaxis): **opposite**

Leaf shape: **simple - entire**

Stipules: **absent**

Petiole: **both present and absent**

Leaf life span: **evergreen**

Leaf anatomy: **mesomorphic**

Flower

Flowering period [month]: **May-August**

Flowering phase: **4 Fagus sylvatica-Galeobdolon (start of mid-spring)**

Flower colour: **blue**

Flower symmetry: **zygomorphic**

Perianth type: **calyx and corolla**



Perianth fusion: **fused**

Shape of the sympetalous corolla or syntepalous perianth: **rotate**

Calyx fusion: **fused at the base**

Inflorescence type: **racemus**

Dicliny: **synoecious**

Generative reproduction type: **facultative allogamy**

Pollination syndrome: **insect-pollination, pseudocleistogamy**

Pollinator spectrum: **honeybee, bumblebees, solitary bees, other Hymenoptera, hoverflies, flies s. l., meat flies s. l., other Diptera, butterflies, beetles, other pollinators**

Fruit, seed and dispersal

Fruit type: **dry fruit - capsule**

Fruit colour: **brown**

Reproduction type: **by seed/spores and vegetatively**

Dispersal unit (diaspore): **seed**

Dispersal strategy: **Allium (mainly autochory)**

Myrmecochory: **non-myrmecochorous (a)**

Belowground organs and clonality

Shoot metamorphosis: **stolon**

Storage organ: **stolon**

Type of clonal growth organ: **stolon**

Freely dispersible organs of clonal growth: **absent**

Shoot life span (cyclicality): **monocyclic shoots prevailing**

Branching type of stem-derived organs of clonal growth: **sympodial**

Primary root: **absent**

Persistence of the clonal growth organ [year]: **2.9**

Number of clonal offspring: **2.1**

Lateral spreading distance by clonal growth [m]: **0.13**

Clonal index: **4**

Bud bank

Number of buds per shoot at the soil surface (root buds excluded): **9**

Number of buds per shoot at a depth of 0–10 cm (root buds excluded): **15**

Number of buds per shoot at a depth greater than 10 cm (root buds excluded): **0**

Size of the belowground bud bank (root buds excluded): **24**

Depth of the belowground bud bank (root buds excluded) [cm]: **4**

Number of buds per shoot at the soil surface (root buds included): **9**

Number of buds per shoot at a depth of 0–10 cm (root buds included): **15**

Number of buds per shoot at a depth greater than 10 cm (root buds included): **0**

Size of the belowground bud bank (root buds included): **24**

Depth of the belowground bud bank (root buds included) [cm]: **4**

Trophic mode

Parasitism and mycoheterotrophy: **autotrophic**

Carnivory: **non-carnivorous**



Symbiotic nitrogen fixation: **no nitrogen-fixing symbionts**

Karyology

Chromosome number (2n): **32**

Ploidy level (x): **4**

2C genome size [Mbp]: **3037.07**

1Cx monoploid genome size [Mbp]: **759.27**

Genomic GC content: **40.4 %**

Taxon origin

Origin in the Czech Republic: **native**

Ecological indicator values

Ellenberg-type indicator values

Light indicator value: **6x - transition between values 5 and 7; rarely at less than 20% of diffuse radiation incident in an open area (generalist)**

Temperature indicator value: **5 - moderate heat indicator, occurring from lowland to montane belt, mainly in submontane-temperate areas**

Moisture indicator value: **5 - indicator of fresh soils, focus on soils of average moisture, missing on wet and on soils that frequently dry out**

Reaction indicator value: **7x - indicator of slightly acidic to slightly basic conditions, never occurring in very acidic conditions (generalist)**

Nutrient indicator value: **6x - transition between values 5 and 7 (generalist)**

Salinity indicator value: **0 - not salt tolerant, glycophyte**

Habitat and sociology

Occurrence in habitats

1 Vegetation of cliffs, screes and walls

1A Calcareous cliffs: **1 - rare occurrence**

1B Siliceous cliffs and block fields: **1 - rare occurrence**

1C Walls: **1 - rare occurrence**

1D Mobile calcareous screes: **1 - rare occurrence**

2 Alpine and subalpine grasslands

2B Subalpine tall-forb and tall-grass vegetation: **1 - rare occurrence**

4 Wetland and riverine herbaceous vegetation

4D Riverine reed vegetation: **1 - rare occurrence**

4E Reed vegetation of brooks: **1 - rare occurrence**

4G Tall-sedge beds: **1 - rare occurrence**

4J River gravel banks: **1 - rare occurrence**

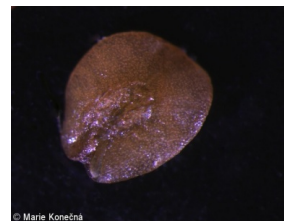
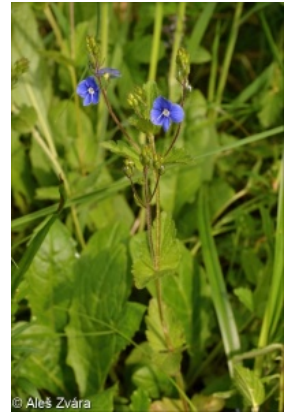
4K Petasites fringes of montane brooks: **1 - rare occurrence**

4L Nitrophilous herbaceous fringes of lowland rivers: **1 - rare occurrence**

5 Vegetation of springs and mires

5B Lowland to montane soft-water springs: **1 - rare occurrence**

5D Calcareous fens: **1 - rare occurrence**



- 5E Acidic moss-rich fens and peatland meadows: **1 - rare occurrence**
- 6 Meadows and mesic pastures
- 6A Mesic Arrhenatherum meadows: **2 - optimum**
- 6B Montane mesic meadows: **2 - optimum**
- 6C Pastures and park grasslands: **2 - optimum**
- 6D Alluvial meadows of lowland rivers: **2 - optimum**
- 6E Wet Cirsium meadows: **2 - optimum**
- 6F Intermittently wet Molinia meadows: **2 - optimum**
- 6G Vegetation of wet disturbed soils: **1 - rare occurrence**
- 7 Acidophilous grasslands
- 7A Subalpine and montane acidophilous grasslands: **2 - optimum**
- 7B Submontane Nardus grasslands: **2 - optimum**
- 8 Dry grasslands
- 8A Hercynian dry grasslands on rock outcrops: **1 - rare occurrence**
- 8B Submediterranean dry grasslands on rock outcrops: **1 - rare occurrence**
- 8C Narrow-leaved sub-continental steppes: **1 - rare occurrence**
- 8D Broad-leaved dry grasslands: **1 - rare occurrence**
- 8E Acidophilous dry grasslands: **1 - rare occurrence**
- 8F Thermophilous forest fringe vegetation: **2 - optimum**
- 9 Sand grasslands and rock-outcrop vegetation
- 9C Festuca grasslands on acidic sands: **1 - rare occurrence**
- 9E Acidophilous vegetation of spring therophytes and succulents: **1 - rare occurrence**
- 9F Basiphilous vegetation of spring therophytes and succulents: **1 - rare occurrence**
- 10 Saline vegetation
- 10I Inland saline meadows: **1 - rare occurrence**
- 11 Heathlands and scrub
- 11A Dry lowland to subalpine heathlands: **1 - rare occurrence**
- 11H Subalpine deciduous scrub: **1 - rare occurrence**
- 11J Willow galleries of loamy and sandy river banks: **1 - rare occurrence**
- 11L Tall mesic and xeric shrub: **1 - rare occurrence**
- 11N Low xeric scrub: **1 - rare occurrence**
- 11R Scrub and pioneer woodland of forests clearings: **1 - rare occurrence**
- 12 Forests
- 12A Alder carrs: **1 - rare occurrence**
- 12B Alluvial forests: **1 - rare occurrence**
- 12C Oak-hornbeam forests: **2 - optimum**
- 12D Ravine forests: **1 - rare occurrence**
- 12E Herb-rich beech forests: **1 - rare occurrence**
- 12F Limestone beech forests: **2 - optimum**
- 12G Acidophilous beech forests: **1 - rare occurrence**
- 12H Peri-Alpidic basiphilous thermophilous oak forests: **2 - optimum**
- 12I Sub-continental thermophilous oak forests: **2 - optimum**
- 12J Acidophilous thermophilous oak forests: **2 - optimum**
- 12K Acidophilous oak forests: **1 - rare occurrence**
- 12L Boreo-continental pine forests: **1 - rare occurrence**
- 12O Peri-Alpidic pine forests: **1 - rare occurrence**
- 12T Robinia pseudacacia plantations: **1 - rare occurrence**

12U Plantations of broad-leaved non-native trees: **1 - rare occurrence**

12V Spruce plantations: **1 - rare occurrence**

12W Pine and larch plantations: **1 - rare occurrence**

13 Anthropogenic vegetation

13A Annual vegetation of ruderal habitats: **1 - rare occurrence**

13B Annual vegetation of arable land: **1 - rare occurrence**

13C Annual vegetation of trampled habitats: **1 - rare occurrence**

13D Perennial thermophilous ruderal vegetation: **1 - rare occurrence**

13E Perennial nitrophilous herbaceous vegetation of mesic sites: **2 - optimum**

13F Herbaceous vegetation of forests clearings and Rubus scrub: **1 - rare occurrence**

Affinity to the forest environment

Affinity to the forest environment in Thermophyticum: **2.1 - taxon occurring both in the forest and open vegetation**

Affinity to the forest environment in Mesophyticum and Oreophyticum: **2.1 - taxon occurring both in the forest and open vegetation**

Constant taxon

Constant taxon of alliances: [TDA *Arrhenatherion elatioris*](#), [TDB *Polygono bistortae-Trisetion flavescens*](#), [TDD *Molinion caeruleae*](#), [TDE *Deschampsion cespitosae*](#), [TEB *Nardo strictae-Agrostion tenuis*](#), [TEC *Violion caninae*](#)

Constant taxon of associations: [KAB02 *Salicetum purpureae*](#), [LBA07 *Fraxino pannonicae-Ulmetum glabrae*](#), [TDA01 *Pastinaco sativae-Arrhenatheretum elatioris*](#), [TDA02 *Ranunculo bulbosi-Arrhenatheretum elatioris*](#), [TDA03 *Poo-Trisetetum flavescens*](#), [TDA04 *Potentillo albae-Festucetum rubrae*](#), [TDB01 *Geranio sylvatici-Trisetetum flavescens*](#), [TDB02 *Melandrio rubri-Phleetum alpini*](#), [TDB03 *Meo athamantici-Festucetum rubrae*](#), [TDC01 *Lolio perennis-Cynosuretum cristati*](#), [TDD01 *Molinietum caeruleae*](#), [TDD02 *Junco effusi-Molinietum caeruleae*](#), [TDE02 *Holcetum lanati*](#), [TDE04 *Cnidio dubii-Deschampsietum cespitosae*](#), [TDF02 *Cirsietum rivularis*](#), [TDF05 *Polygono bistortae-Cirsietum heterophylli*](#), [TEB01 *Sileno vulgaris-Nardetum strictae*](#), [TEC02 *Campanulo rotundifoliae-Dianthetum deltoidis*](#)

Colonization ability

Index of colonization success (ICS): **7**

Index of colonization potential (ICP): **3**

Optimum successional age [years]: **32**

Distribution and frequency

Floristic zone: **boreal, northern temperate, southern temperate, submeridional, meridional**

Floristic region: **Europe**

Distribution range extension along the continentality gradient: **6**

Elevational belt in the Czech Republic: **lowlands, colline belt, submontane belt, montane belt, subalpine belt**

Occurrence frequency in the basic grid mapping cells and quadrants of the basic grid mapping cells: 670

taxon.data.freq_in_quad: 2436

Number of habitats with taxon occurrence in the Czech Republic

Number of narrow habitats in which the taxon occurs: **62**

Number of narrow habitats in which the taxon has its optimum: **15**

Number of broad habitats in which the taxon occurs: **12**

Number of broad habitats in which the taxon has its optimum: **5**

Threats and protection

Red List 2017 (national categories): **taxon is not on the Red List**

Red List 2017 (IUCN categories): **LC(NA) - least concern (taxon is not on the Red List)**

Legal protection: **not protected by law**