

Brassica oleracea Italica Group

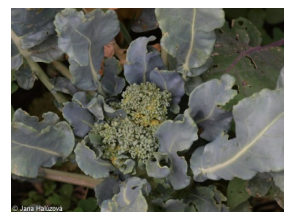
Distribution



Map info

- revised records
- unrevised records

On the map are not visualized records without the coordinates and records marked as incorrect or doubtful.



Leaf

Leaf presence and metamorphosis: **leaves present, not modified**

Petiole: **both present and absent**

Flower

Flower colour: **yellow**

Perianth type: **calyx and corolla**

Calyx fusion: **aposepalous**

Inflorescence type: **racemus**

Fruit, seed and dispersal

Fruit colour: **brown**

Trophic mode

Parasitism and mycoheterotrophy: **autotrophic**

Carnivory: **non-carnivorous**

Symbiotic nitrogen fixation: **no nitrogen-fixing symbionts**

Taxon origin

Origin in the Czech Republic: **cultivated only**

Habitat and sociology

Affinity to the forest environment

Affinity to the forest environment in Thermophyticum: **0 - taxon that does not spontaneously occur in Czech forests**

Affinity to the forest environment in Mesophyticum and Oreophyticum: **0 - taxon that does not spontaneously occur in Czech forests**