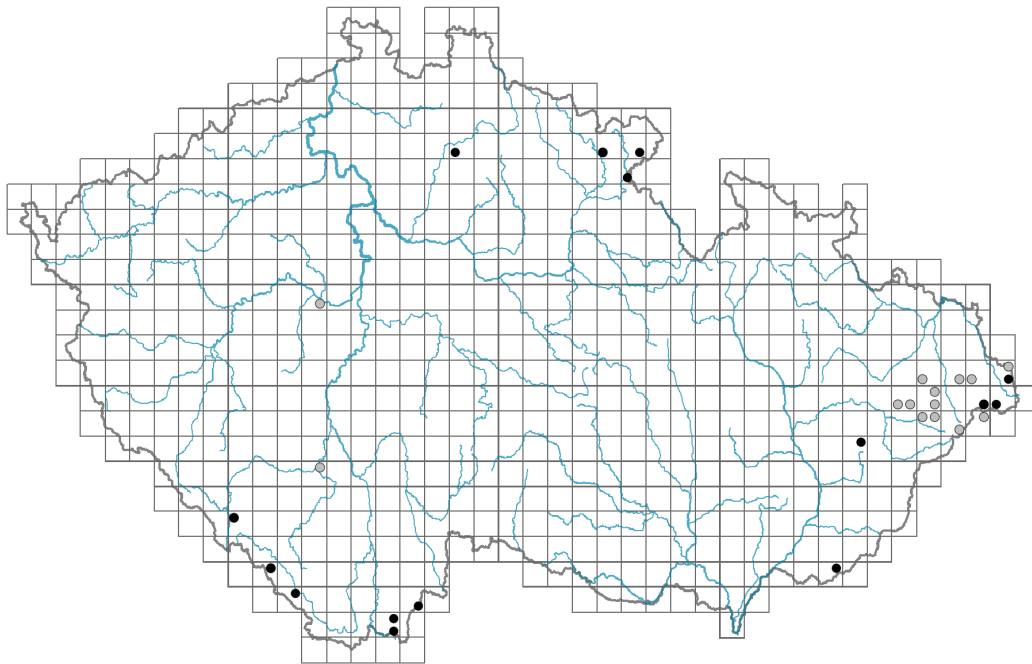


# *Dryopteris ×critica*

## Distribution

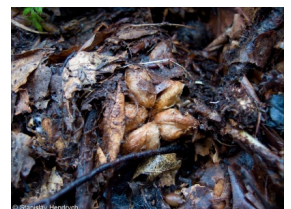


### Map info

● revised records

○ unrevised records

On the map are not visualized records without the coordinates and records marked as incorrect or doubtful.



## Leaf

Leaf presence and metamorphosis: **leaves present, not modified**

Stipules: **absent**

Petiole: **present**

## Trophic mode

Parasitism and mycoheterotrophy: **autotrophic**

Carnivory: **non-carnivorous**

Symbiotic nitrogen fixation: **no nitrogen-fixing symbionts**

## Taxon origin

Origin in the Czech Republic: **native**

## Habitat and sociology

Affinity to the forest environment

Affinity to the forest environment in Mesophyticum and Oreophyticum: **1.1 - taxon occurring mainly in the closed forest**