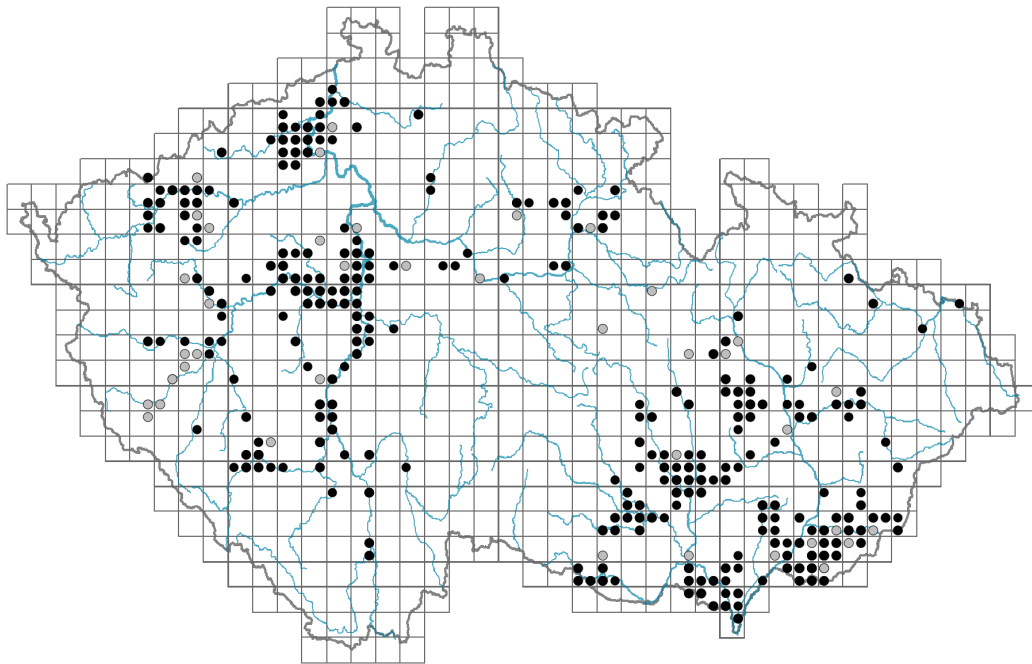


Cerastium brachypetalum agg.

Distribution



Map info

● revised records

○ unrevised records

On the map are not visualized records without the coordinates and records marked as incorrect or doubtful.



Habitus and growth type

Height [m]: **0.1-0.4**

Growth form: **annual herb**

Life form: **therophyte**

Life strategy: **R - ruderal, SR - stress-tolerator/ruderal**

Leaf

Leaf presence and metamorphosis: **leaves present, not modified**

Leaf arrangement (phyllotaxis): **opposite, rosulate**

Leaf shape: **simple - entire**

Stipules: **absent**

Petiole: **absent**

Leaf life span: **overwintering green**

Leaf anatomy: **scleromorphic**

Flower

Flowering period [month]: **April-May**

Flowering phase: **4 Fagus sylvatica-Galeobdolon (start of mid-spring)**

Flower colour: **white**

Flower symmetry: **actinomorphic**

Perianth type: **calyx and corolla**

Perianth fusion: **free**

Calyx fusion: **aposepalous**

Inflorescence type: **dichasium**

Dicliny: **synoecious, gynomonoeious, gynodioecious**

Generative reproduction type: **autogamy, facultative autogamy**

Pollination syndrome: **insect-pollination, selfing**

Pollinator spectrum: **bumblebees, solitary bees, hoverflies, other Diptera, thrips**

Fruit, seed and dispersal

Fruit type: **dry fruit - capsule**

Fruit colour: **brown**

Reproduction type: **only by seed/spores**

Dispersal unit (diaspore): **seed**

Dispersal strategy: **Allium (mainly autochory)**

Myrmecochory: **non-myrmecochorous (b), non-myrmecochorous (b) nv**

Belowground organs and clonality

Shoot life span (cyclicality): **monocyclic shoots prevailing**

Primary root: **present**

Bud bank

Number of buds per shoot at the soil surface (root buds excluded): **5**

Number of buds per shoot at a depth of 0–10 cm (root buds excluded): **0**

Number of buds per shoot at a depth greater than 10 cm (root buds excluded): **0**

Size of the belowground bud bank (root buds excluded): **5**

Depth of the belowground bud bank (root buds excluded) [cm]: **1**

Number of buds per shoot at the soil surface (root buds included): **5**

Number of buds per shoot at a depth of 0–10 cm (root buds included): **0**

Number of buds per shoot at a depth greater than 10 cm (root buds included): **0**

Size of the belowground bud bank (root buds included): **5**

Depth of the belowground bud bank (root buds included) [cm]: **1**

Trophic mode

Parasitism and mycoheterotrophy: **autotrophic**

Carnivory: **non-carnivorous**

Symbiotic nitrogen fixation: **no nitrogen-fixing symbionts**

Karyology

Chromosome number (2n): **52, 90**

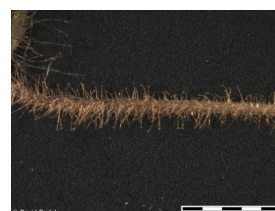
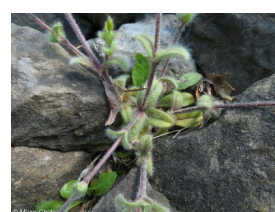
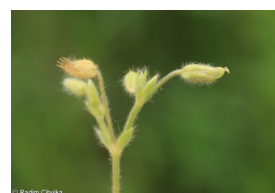
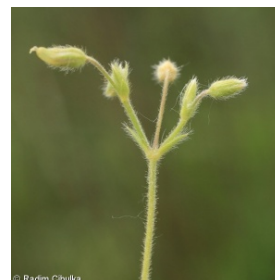
Ploidy level (x): **6, 10**

2C genome size [Mbp]: **2353.56**

1Cx monoploid genome size [Mbp]: **299.11**

Taxon origin

Origin in the Czech Republic: **native**



Ecological indicator values

Ellenberg-type indicator values

Light indicator value: **9 - full light plant, occurring only in fully irradiated places, not at less than 50% of diffuse radiation incident in an open area**

Temperature indicator value: **7 - heat indicator, occurring in relatively warm lowlands**

Moisture indicator value: **3 - missing on damp soil**

Reaction indicator value: **7 - indicator of slightly acidic to slightly basic conditions, never occurring in very acidic conditions**

Nutrient indicator value: **3 - occurring at nutrient-poor sites more frequently than at average sites and exceptionally at rich sites**

Salinity indicator value: **0 - not salt tolerant, glycophyte**

Habitat and sociology

Occurrence in habitats

1 Vegetation of cliffs, screes and walls

1D Mobile calcareous screes: **1 - rare occurrence**

6 Meadows and mesic pastures

6A Mesic Arrhenatherum meadows: **1 - rare occurrence**

6C Pastures and park grasslands: **1 - rare occurrence**

8 Dry grasslands

8A Hercynian dry grasslands on rock outcrops: **2 - optimum**

8B Submediterranean dry grasslands on rock outcrops: **1 - rare occurrence**

8C Narrow-leaved sub-continental steppes: **2 - optimum**

8D Broad-leaved dry grasslands: **1 - rare occurrence**

8E Acidophilous dry grasslands: **2 - optimum**

8F Thermophilous forest fringe vegetation: **1 - rare occurrence**

9 Sand grasslands and rock-outcrop vegetation

9B Open vegetation of acidic sands: **1 - rare occurrence**

9C Festuca grasslands on acidic sands: **1 - rare occurrence**

9E Acidophilous vegetation of spring therophytes and succulents: **2 - optimum**

9F Basiphilous vegetation of spring therophytes and succulents: **2 - optimum**

11 Heathlands and scrub

11A Dry lowland to subalpine heathlands: **1 - rare occurrence**

11L Tall mesic and xeric shrub: **1 - rare occurrence**

11N Low xeric scrub: **1 - rare occurrence**

13 Anthropogenic vegetation

13C Annual vegetation of trampled habitats: **1 - rare occurrence**

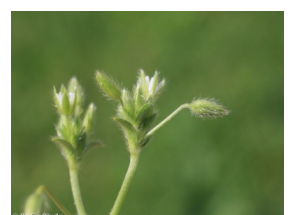
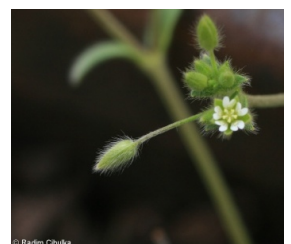
13D Perennial thermophilous ruderal vegetation: **1 - rare occurrence**

13F Herbaceous vegetation of forests clearings and Rubus scrub: **1 - rare occurrence**

Affinity to the forest environment

Affinity to the forest environment in Thermophyticum: **0 - taxon that does not spontaneously occur in Czech forests**

Affinity to the forest environment in Mesophyticum and Oreophyticum: **0 - taxon that does not spontaneously occur in Czech forests**



Distribution and frequency

Floristic zone: **northern temperate, southern temperate, submeridional, meridional**

Floristic region: **Europe**

Elevational belt in the Czech Republic: **lowlands, colline belt**

Occurrence frequency in the basic grid mapping cells and quadrants of the basic grid mapping cells: 193

taxon.data.freq_in_quad: 331

Commonness in vegetation plots from the Czech Republic

Maximum percentage cover in vegetation plots: **13 %**

Number of habitats with taxon occurrence in the Czech Republic

Number of narrow habitats in which the taxon occurs: **19**

Number of narrow habitats in which the taxon has its optimum: **5**

Number of broad habitats in which the taxon occurs: **6**

Number of broad habitats in which the taxon has its optimum: **2**

