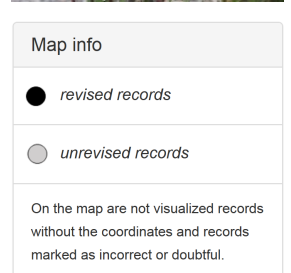
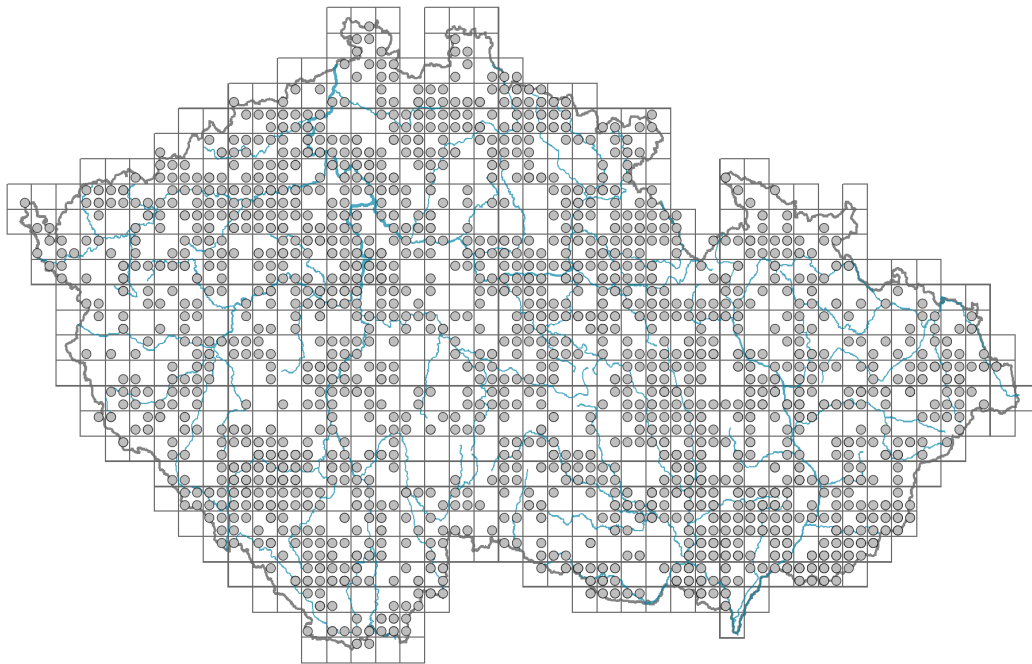


Erigeron acris agg.

Distribution



Habitus and growth type

Height [m]: **0.1-1.2**

Growth form: **monocarpic perennial non-clonal herb**

Life form: **hemicryptophyte**

Leaf

Leaf presence and metamorphosis: **leaves present, not modified**

Leaf arrangement (phyllotaxis): **alternate, rosulate**

Leaf shape: **simple - entire**

Stipules: **absent**

Petiole: **both present and absent, absent**

Flower

Flowering period [month]: **June-October**

Flower colour: **yellow, pink-violet**

Flower symmetry: **actinomorphic, zygomorphic**

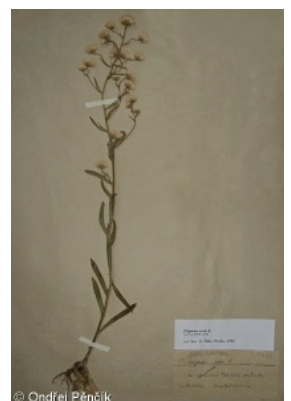
Perianth type: **calyx reduced, corolla present**

Perianth fusion: **fused**

Shape of the sympetalous corolla or syntepalous perianth: **ligulate, tubular**

Calyx fusion: **pappus**

Inflorescence type: **racemus ex anthodiis compositus, panícula ex anthodiis**



composita

Generative reproduction type: **facultative allogamy**

Fruit, seed and dispersal

Fruit type: **dry fruit - achene/cypsela/samara**

Fruit colour: **brown**

Dispersal unit (diaspore): **fruit, infrutescence or its part**

Dispersal strategy: **Epilobium (mainly anemochory and autochory)**

Myrmecochory: **probably myrmecochorous, probably myrmecochorous nv**

Belowground organs and clonality

Shoot life span (cyclicality): **monocyclic shoots prevailing**

Primary root: **present**

Bud bank

Number of buds per shoot at the soil surface (root buds excluded): **5**

Number of buds per shoot at a depth of 0–10 cm (root buds excluded): **8**

Number of buds per shoot at a depth greater than 10 cm (root buds excluded): **0**

Size of the belowground bud bank (root buds excluded): **13**

Depth of the belowground bud bank (root buds excluded) [cm]: **3**

Number of buds per shoot at the soil surface (root buds included): **5**

Number of buds per shoot at a depth of 0–10 cm (root buds included): **8**

Number of buds per shoot at a depth greater than 10 cm (root buds included): **0**

Size of the belowground bud bank (root buds included): **13**

Depth of the belowground bud bank (root buds included) [cm]: **3**

Trophic mode

Parasitism and mycoheterotrophy: **autotrophic**

Carnivory: **non-carnivorous**

Symbiotic nitrogen fixation: **no nitrogen-fixing symbionts**

Karyology

Chromosome number (2n): **18**

Ploidy level (x): **2**

2C genome size [Mbp]: **2529.48**

1Cx monoploid genome size [Mbp]: **1264.74**

Taxon origin

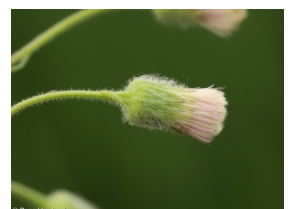
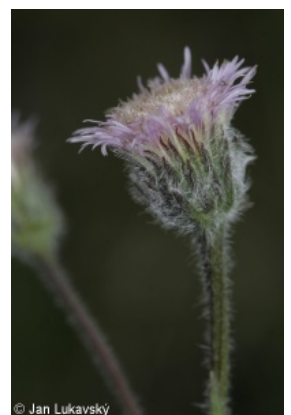
Origin in the Czech Republic: **native**

Ecological indicator values

Ellenberg-type indicator values

Light indicator value: **8 - light plant, only exceptionally occurring at less than 40% of diffuse radiation incident in an open area**

Temperature indicator value: **5 - moderate heat indicator, occurring from lowland**



to montane belt, mainly in submontane-temperate areas

Moisture indicator value: **4 - transition between values 3 and 5**

Reaction indicator value: **7 - indicator of slightly acidic to slightly basic conditions, never occurring in very acidic conditions**

Nutrient indicator value: **3 - occurring at nutrient-poor sites more frequently than at average sites and exceptionally at rich sites**

Salinity indicator value: **1 - salt tolerant, mostly on low-salt to salt-free soils, but occasionally on slightly salty soils**

Indicator values for disturbance

Whole-community disturbance frequency indicator value: **-0.15**

Herb layer disturbance frequency indicator value: **-0.14**

Whole-community disturbance severity indicator value: **0.37**

Herb layer disturbance severity indicator value: **0.4**

Whole-community structure based disturbance indicator value: **0.65**

Herb layer structure-based disturbance indicator value: **0.77**

Habitat and sociology

Occurrence in habitats

1 Vegetation of cliffs, screes and walls

1A Calcareous cliffs: **1 - rare occurrence**

1B Siliceous cliffs and block fields: **2 - optimum**

1D Mobile calcareous screes: **1 - rare occurrence**

6 Meadows and mesic pastures

6A Mesic Arrhenatherum meadows: **1 - rare occurrence**

6C Pastures and park grasslands: **1 - rare occurrence**

8 Dry grasslands

8A Hercynian dry grasslands on rock outcrops: **1 - rare occurrence**

8B Submediterranean dry grasslands on rock outcrops: **1 - rare occurrence**

8C Narrow-leaved sub-continental steppes: **2 - optimum**

8D Broad-leaved dry grasslands: **2 - optimum**

8E Acidophilous dry grasslands: **1 - rare occurrence**

8F Thermophilous forest fringe vegetation: **2 - optimum**

9 Sand grasslands and rock-outcrop vegetation

9B Open vegetation of acidic sands: **1 - rare occurrence**

9C Festuca grasslands on acidic sands: **2 - optimum**

9D Pannonian sand steppes: **2 - optimum**

9E Acidophilous vegetation of spring therophytes and succulents: **1 - rare occurrence**

9F Basiphilous vegetation of spring therophytes and succulents: **1 - rare occurrence**

10 Saline vegetation

10J Saline steppes: **1 - rare occurrence**

13 Anthropogenic vegetation

13A Annual vegetation of ruderal habitats: **1 - rare occurrence**

13C Annual vegetation of trampled habitats: **1 - rare occurrence**

13D Perennial thermophilous ruderal vegetation: **2 - optimum**

13F Herbaceous vegetation of forests clearings and Rubus scrub: **1 - rare occurrence**

Affinity to the forest environment



Affinity to the forest environment in Thermophyticum: **0 - taxon that does not spontaneously occur in Czech forests**

Affinity to the forest environment in Mesophyticum and Oreophyticum: **0 - taxon that does not spontaneously occur in Czech forests**

Diagnostic taxon

Diagnostic taxon of associations: [XCB04 *Dauco carotae-Picridetum hieracioidis*](#)

Constant taxon

Constant taxon of associations: [KAB03 *Salici purpureae-Myricarietum germanicae*](#)

Ecological specialization indices

Ecological specialization index for all vegetation types: **4.8**

Ecological specialization index for non-forest vegetation: **4.8**

Distribution and frequency

Elevational belt in the Czech Republic: **lowlands, colline belt, submontane belt, montane belt**

Occurrence frequency in the basic grid mapping cells and quadrants of the basic grid mapping cells: 561

taxon.data.freq_in_quad: 1358

Commonness in vegetation plots from the Czech Republic

Occurrence frequency in vegetation plots: **0.2 %**

Occurrence frequency in vegetation plots with a cover above 5%: **1.4 %**

Occurrence frequency in vegetation plots with a cover above 25%: **0 %**

Occurrence frequency in vegetation plots with a cover above 50%: **0 %**

Mean percentage cover in vegetation plots: **1.7 %**

Maximum percentage cover in vegetation plots: **13 %**

Number of habitats with taxon occurrence in the Czech Republic

Number of narrow habitats in which the taxon occurs: **21**

Number of narrow habitats in which the taxon has its optimum: **7**

Number of broad habitats in which the taxon occurs: **6**

Number of broad habitats in which the taxon has its optimum: **4**

