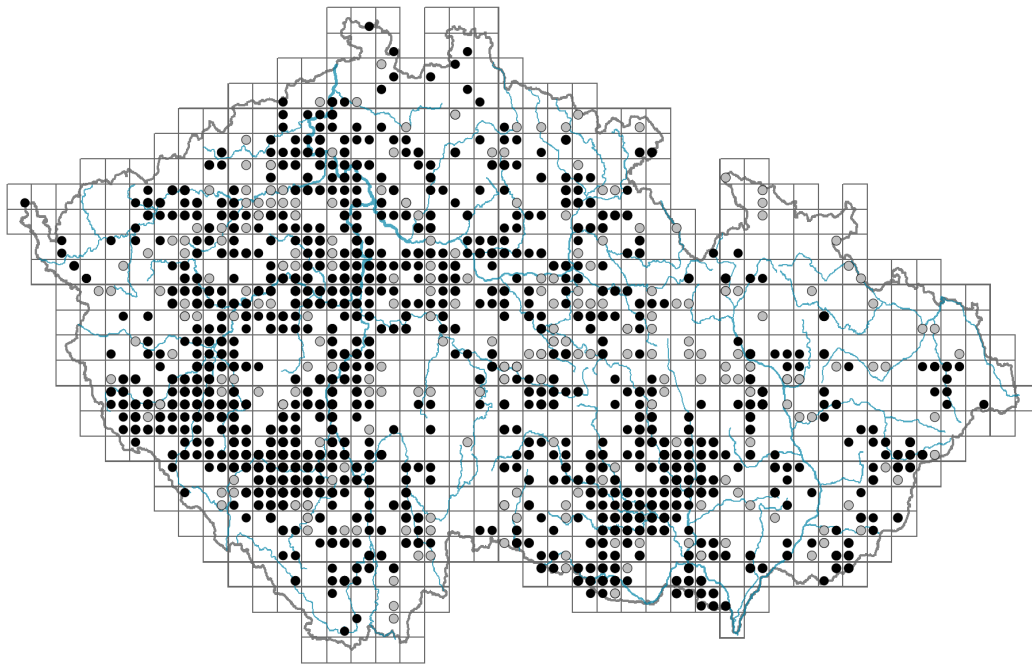


# *Rosa rubiginosa* agg.

## Distribution

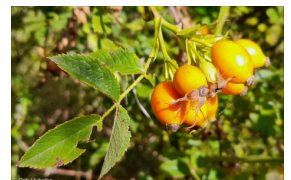


### Map info

● revised records

○ unrevised records

On the map are not visualized records without the coordinates and records marked as incorrect or doubtful.



## Habitus and growth type

Height [m]: **1-2.5**

Growth form: **shrub**

Life form: **nanophanerophyte**

Life strategy: **C - competitor**

## Leaf

Leaf presence and metamorphosis: **leaves present, not modified**

Leaf arrangement (phyllotaxis): **alternate**

Leaf shape: **compound - imparipinnate**

Stipules: **present**

Petiole: **present**

Leaf life span: **summer green**

Leaf deciduousness in woody plants: **winter deciduous**

Leaf anatomy: **mesomorphic**

Functional leaf type in woody plants: **broad deciduous or semi-deciduous**

## Flower

Flowering period [month]: **June-July**

Flowering phase: **6 Cornus sanguinea-Melica uniflora (start of early summer)**

Flower colour: **white, pink**

Flower symmetry: **actinomorphic**

Perianth type: **calyx and corolla**

Perianth fusion: **free**

Calyx fusion: **aposepalous**

Inflorescence type: **corymbus, flores solitarii**

Dicliny: **synoecious**

Generative reproduction type: **facultative autogamy, mixed mating**

Pollination syndrome: **insect-pollination, selfing**

## Fruit, seed and dispersal

Fruit type: **fleshy fruit - hip**

Fruit colour: **red**

Reproduction type: **by seed/spores and vegetatively, only by seed/spores**

Dispersal unit (diaspore): **seed, fruit, infrutescence or its part**

Dispersal strategy: **Cornus (mainly autochory and endozoochory)**

Myrmecochory: **non-myrmecochorous (b)**

## Belowground organs and clonality

Shoot metamorphosis: **stolon**

Bud bank

Number of buds per shoot at the soil surface (root buds excluded): **0**

Number of buds per shoot at a depth of 0–10 cm (root buds excluded): **5**

Number of buds per shoot at a depth greater than 10 cm (root buds excluded): **5**

Size of the belowground bud bank (root buds excluded): **10**

Depth of the belowground bud bank (root buds excluded) [cm]: **10**

Number of buds per shoot at the soil surface (root buds included): **0**

Number of buds per shoot at a depth of 0–10 cm (root buds included): **5**

Number of buds per shoot at a depth greater than 10 cm (root buds included): **5**

Size of the belowground bud bank (root buds included): **10**

Depth of the belowground bud bank (root buds included) [cm]: **10**

## Trophic mode

Parasitism and mycoheterotrophy: **autotrophic**

Carnivory: **non-carnivorous**

Symbiotic nitrogen fixation: **no nitrogen-fixing symbionts**

## Karyology

Chromosome number (2n): **35, 42**

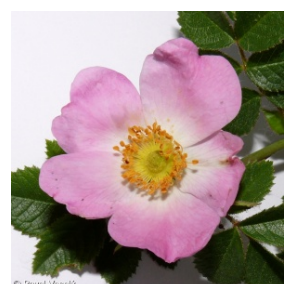
Ploidy level (x): **5, 6**

2C genome size [Mbp]: **2631.81**

1Cx monoploid genome size [Mbp]: **493.32**

## Taxon origin

Origin in the Czech Republic: **native**



## Ecological indicator values

### Ellenberg-type indicator values

Light indicator value: **7 - half-light plant, mostly occurring at full light, but also in the shade up to about 30% of diffuse radiation incident in an open area**

Temperature indicator value: **6 - transition between values 5 and 7**

Moisture indicator value: **3 - missing on damp soil**

Reaction indicator value: **8 - transition between values 7 and 9, occurring mostly in calcium-rich conditions**

Nutrient indicator value: **4 - transition between values 3 and 5**

Salinity indicator value: **0 - not salt tolerant, glycophyte**

### Indicator values for disturbance

Whole-community disturbance frequency indicator value: **-1.27**

Herb layer disturbance frequency indicator value: **-1.04**

Whole-community disturbance severity indicator value: **0.22**

Herb layer disturbance severity indicator value: **0.19**

Whole-community structure based disturbance indicator value: **0.43**

Herb layer structure-based disturbance indicator value: **0.65**

## Habitat and sociology

### Occurrence in habitats

#### 1 Vegetation of cliffs, screes and walls

1A Calcareous cliffs: **1 - rare occurrence**

1B Siliceous cliffs and block fields: **1 - rare occurrence**

1D Mobile calcareous screes: **1 - rare occurrence**

#### 8 Dry grasslands

8A Hercynian dry grasslands on rock outcrops: **1 - rare occurrence**

8B Submediterranean dry grasslands on rock outcrops: **1 - rare occurrence**

8C Narrow-leaved sub-continental steppes: **1 - rare occurrence**

8D Broad-leaved dry grasslands: **1 - rare occurrence**

8E Acidophilous dry grasslands: **1 - rare occurrence**

8F Thermophilous forest fringe vegetation: **1 - rare occurrence**

#### 11 Heathlands and scrub

11A Dry lowland to subalpine heathlands: **1 - rare occurrence**

11J Willow galleries of loamy and sandy river banks: **1 - rare occurrence**

11L Tall mesic and xeric shrub: **2 - optimum**

11N Low xeric scrub: **2 - optimum**

11R Scrub and pioneer woodland of forests clearings: **1 - rare occurrence**

#### 12 Forests

12H Peri-Alpidic basiphilous thermophilous oak forests: **2 - optimum**

12I Sub-continental thermophilous oak forests: **1 - rare occurrence**

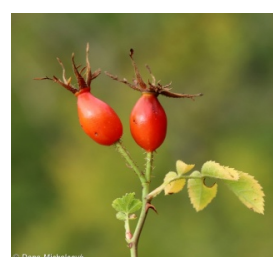
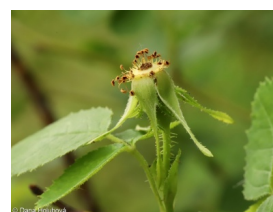
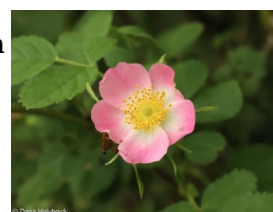
12J Acidophilous thermophilous oak forests: **2 - optimum**

12O Peri-Alpidic pine forests: **1 - rare occurrence**

12T Robinia pseudacacia plantations: **1 - rare occurrence**

12W Pine and larch plantations: **1 - rare occurrence**

#### 13 Anthropogenic vegetation



13D Perennial thermophilous ruderal vegetation: **1 - rare occurrence**

Affinity to the forest environment

Affinity to the forest environment in Thermophyticum: **2.2 - taxon occurring partly in the forest, but mainly in open vegetation**

Affinity to the forest environment in Mesophyticum and Oreophyticum: **2.2 - taxon occurring partly in the forest, but mainly in open vegetation**

Ecological specialization indices

Ecological specialization index for all vegetation types: **4.1**

Ecological specialization index for non-forest vegetation: **4.4**

Ecological specialization index for forest vegetation: **4.3**

## Distribution and frequency

Floristic zone: **northern temperate, southern temperate, submeridional, meridional**

Floristic region: **Europe**

Elevational belt in the Czech Republic: **lowlands, colline belt, submontane belt**

Occurrence frequency in the basic grid mapping cells and quadrants of the basic grid mapping cells: 456

taxon.data.freq\_in\_quad: 1001

Commonness in vegetation plots from the Czech Republic

Occurrence frequency in vegetation plots: **0.1 %**

Occurrence frequency in vegetation plots with a cover above 5%: **4.2 %**

Occurrence frequency in vegetation plots with a cover above 25%: **0 %**

Occurrence frequency in vegetation plots with a cover above 50%: **0 %**

Mean percentage cover in vegetation plots: **2.3 %**

Maximum percentage cover in vegetation plots: **8 %**

Number of habitats with taxon occurrence in the Czech Republic

Number of narrow habitats in which the taxon occurs: **21**

Number of narrow habitats in which the taxon has its optimum: **4**

Number of broad habitats in which the taxon occurs: **5**

Number of broad habitats in which the taxon has its optimum: **2**



