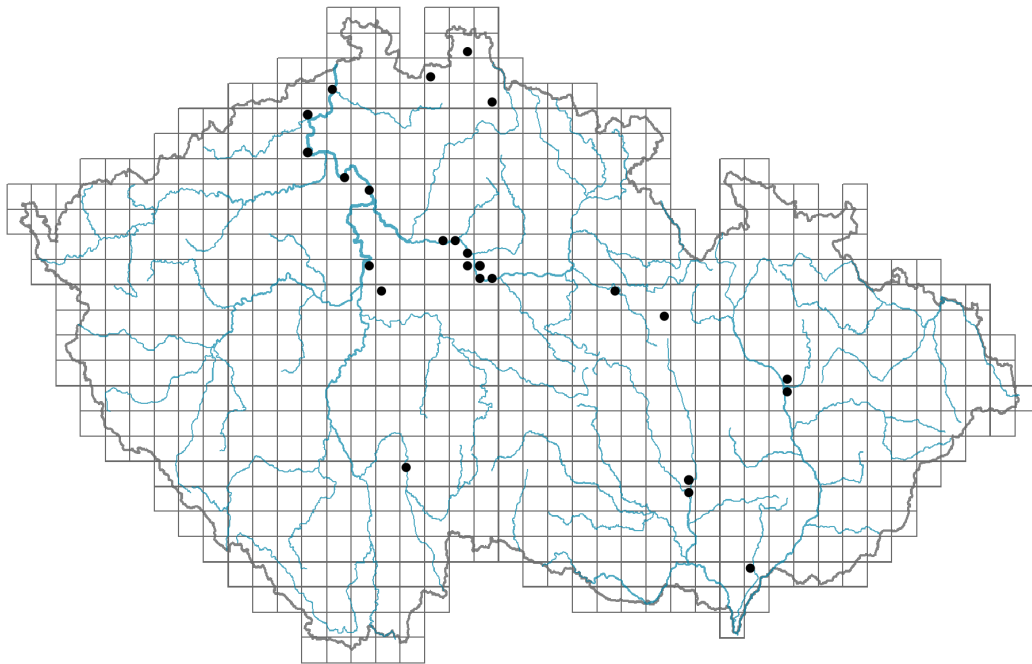


# *Ambrosia trifida*

## Distribution



© Vojtěch Abraham

### Map info

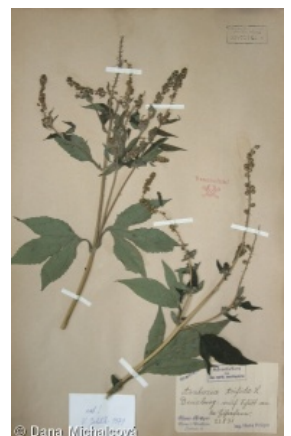
● revised records

○ unrevised records

On the map are not visualized records without the coordinates and records marked as incorrect or doubtful.



© Vojtěch Abraham



© Dana Michalčová

## Habitus and growth type

Height [m]: **0.3-3**

Growth form: **annual herb**

Life form: **therophyte**

Life strategy: **CR - competitor/ruderal**

Life strategy (Pierce method based on leaf traits): **CR**

Life strategy (Pierce method, C-score): **54.3 %**

Life strategy (Pierce method, S-score): **10.5 %**

Life strategy (Pierce method, R-score): **35.3 %**

## Leaf

Leaf presence and metamorphosis: **leaves present, not modified**

Leaf arrangement (phyllotaxis): **opposite**

Leaf shape: **simple - pinnately divided**

Stipules: **absent**

Petiole: **present**

Leaf anatomy: **mesomorphic**

## Flower

Flowering period [month]: **August-October**

Flower colour: **green**

Flower symmetry: **actinomorphic**

Perianth type: **calyx absent, corolla present**

Perianth fusion: **fused**

Shape of the sympetalous corolla or syntepalous perianth: **campanulate**

Inflorescence type: **racemus ex anthodiis masculis compositus, fasciculus ex anthodiis femineis compositus**

Dicliny: **monoecious**

Generative reproduction type: **facultative allogamy**

Pollination syndrome: **wind-pollination**



### **Fruit, seed and dispersal**

Fruit type: **dry fruit - achene/cypsela/samara**

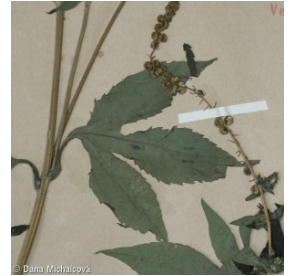
Fruit colour: **brown**

Reproduction type: **only by seed/spores**

Dispersal unit (diaspore): **fruit, infrutescence or its part**

Dispersal strategy: **Allium (mainly autochory)**

Myrmecochory: **non-myrmecochorous (b) nv**



### **Belowground organs and clonality**

Shoot life span (cyclicality): **monocyclic shoots prevailing**

Primary root: **present**

Bud bank

Number of buds per shoot at the soil surface (root buds excluded): **5**

Number of buds per shoot at a depth of 0–10 cm (root buds excluded): **0**

Number of buds per shoot at a depth greater than 10 cm (root buds excluded): **0**

Size of the belowground bud bank (root buds excluded): **5**

Depth of the belowground bud bank (root buds excluded) [cm]: **1**

Number of buds per shoot at the soil surface (root buds included): **5**

Number of buds per shoot at a depth of 0–10 cm (root buds included): **0**

Number of buds per shoot at a depth greater than 10 cm (root buds included): **0**

Size of the belowground bud bank (root buds included): **5**

Depth of the belowground bud bank (root buds included) [cm]: **1**

### **Trophic mode**

Parasitism and mycoheterotrophy: **autotrophic**

Carnivory: **non-carnivorous**

Symbiotic nitrogen fixation: **no nitrogen-fixing symbionts**

### **Taxon origin**

Origin in the Czech Republic: **neophyte**

Invasion status: **casual**

Geographic origin: **North America, Central America**

Year of the first record in the wild: **1960**

Period of introduction: **Recent Past (1950-2000)**

Introduction pathway: **unintentional - agriculture, unintentional - anthropogenic**

## Ecological indicator values

### Ellenberg-type indicator values

Light indicator value: **8 - light plant, only exceptionally occurring at less than 40% of diffuse radiation incident in an open area**

Temperature indicator value: **8 - transition between values 7 and 9**

Moisture indicator value: **5 - indicator of fresh soils, focus on soils of average moisture, missing on wet and on soils that frequently dry out**

Reaction indicator value: **7 - indicator of slightly acidic to slightly basic conditions, never occurring in very acidic conditions**

Nutrient indicator value: **7 - occurring at nutrient-rich sites more often than at average sites and only exceptionally at poor sites**

Salinity indicator value: **1 - salt tolerant, mostly on low-salt to salt-free soils, but occasionally on slightly salty soils**

## Habitat and sociology

### Occurrence in habitats

#### 13 Anthropogenic vegetation

13A Annual vegetation of ruderal habitats: **2 - optimum**

13B Annual vegetation of arable land: **1 - rare occurrence**

13D Perennial thermophilous ruderal vegetation: **1 - rare occurrence**

### Affinity to the forest environment

Affinity to the forest environment in Thermophyticum: **0 - taxon that does not spontaneously occur in Czech forests**

Affinity to the forest environment in Mesophyticum and Oreophyticum: **0 - taxon that does not spontaneously occur in Czech forests**

## Distribution and frequency

Floristic zone: **northern temperate, southern temperate, submeridional, meridional**

Floristic region: **Americas**

Elevational belt in the Czech Republic: **lowlands, colline belt**

Occurrence frequency in the basic grid mapping cells and quadrants of the basic grid mapping cells: **22**

taxon.data.freq\_in\_quad: **25**

### Commonness in vegetation plots from the Czech Republic

Occurrence frequency in vegetation plots: **0 %**

Occurrence frequency in vegetation plots with a cover above 5%: **100 %**

Occurrence frequency in vegetation plots with a cover above 25%: **100 %**

Occurrence frequency in vegetation plots with a cover above 50%: **100 %**

Mean percentage cover in vegetation plots: **88 %**

Maximum percentage cover in vegetation plots: **88 %**

### Number of habitats with taxon occurrence in the Czech Republic

Number of narrow habitats in which the taxon occurs: **3**

Number of narrow habitats in which the taxon has its optimum: **1**

Number of broad habitats in which the taxon occurs: **1**

Number of broad habitats in which the taxon has its optimum: **1**

### **Threats and protection**

Red List 2017 (national categories): **taxon is not on the Red List**

Red List 2017 (IUCN categories): **LC(NA) - least concern (taxon is not on the Red List)**

Legal protection: **not protected by law**