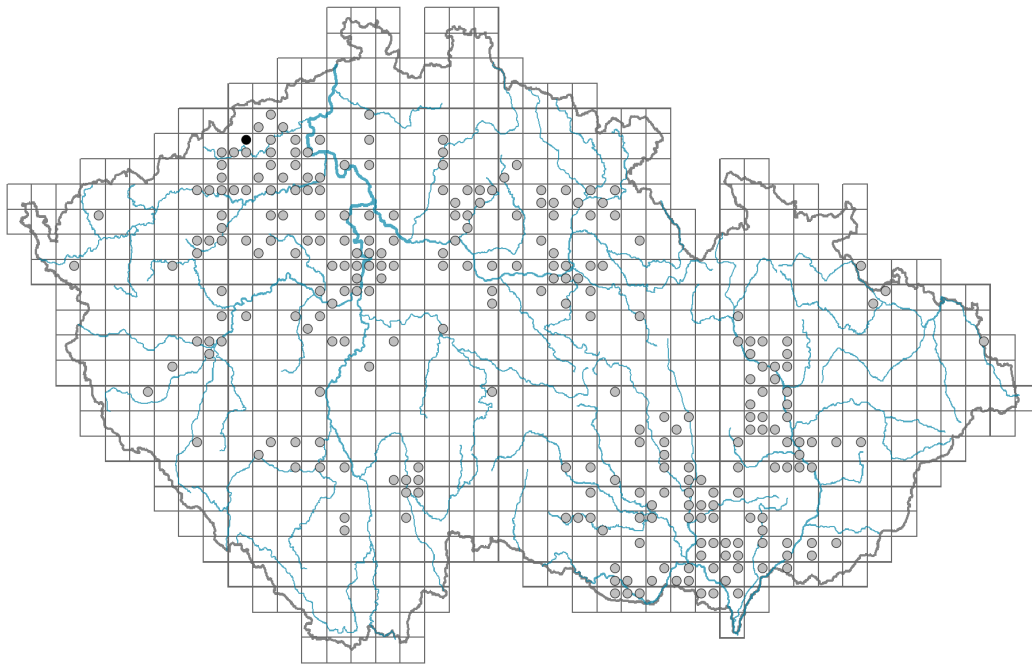


Atriplex rosea

Distribution



© Vladimír Nejšlechta

Map info

● revised records

○ unrevised records

On the map are not visualized records without the coordinates and records marked as incorrect or doubtful.

Habitus and growth type

Height [m]: **0.2-0.6**Growth form: **annual herb**Life form: **therophyte**Life strategy: **CR - competitor/ruderal**Life strategy (Pierce method based on leaf traits): **SR/CSR**Life strategy (Pierce method, C-score): **18.9 %**Life strategy (Pierce method, S-score): **42.7 %**Life strategy (Pierce method, R-score): **38.4 %**

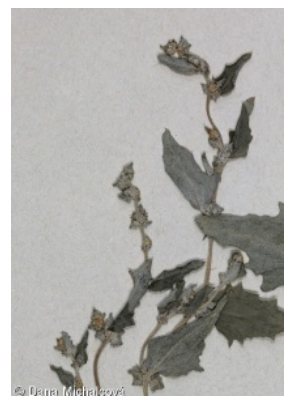
Leaf

Leaf presence and metamorphosis: **leaves present, not modified**Leaf arrangement (phyllotaxis): **alternate**Leaf shape: **simple - entire**Stipules: **absent**Petiole: **present**Leaf life span: **summer green**Leaf anatomy: **scleromorphic, mesomorphic**

Flower

Flowering period [month]: **July-September**

© Dana Michalčová



© Dana Michalčová

Flower colour: **green**
 Flower symmetry: **actinomorphic**
 Perianth type: **homochlamydeous, sometimes absent**
 Perianth fusion: **free**
 Inflorescence type: **pseudospica**
 Dicliny: **monoecious**
 Generative reproduction type: **mixed mating**
 Pollination syndrome: **wind-pollination, insect-pollination**

Fruit, seed and dispersal

Fruit type: **dry fruit - achene/cypsela/samara**
 Fruit colour: **brown**
 Reproduction type: **only by seed/spores**
 Dispersal unit (diaspore): **fruit, infrutescence or its part, tumbleweed**
 Dispersal strategy: **Allium (mainly autochory)**
 Myrmecochory: **non-myrmecochorous (b)**

Belowground organs and clonality

Shoot life span (cyclicality): **monocyclic shoots prevailing**
 Primary root: **present**

Bud bank

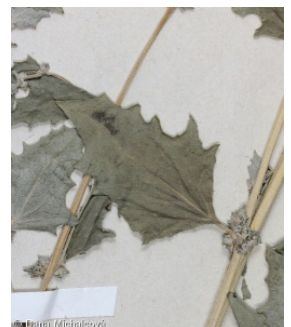
Number of buds per shoot at the soil surface (root buds excluded): **5**
 Number of buds per shoot at a depth of 0–10 cm (root buds excluded): **0**
 Number of buds per shoot at a depth greater than 10 cm (root buds excluded): **0**
 Size of the belowground bud bank (root buds excluded): **5**
 Depth of the belowground bud bank (root buds excluded) [cm]: **1**
 Number of buds per shoot at the soil surface (root buds included): **5**
 Number of buds per shoot at a depth of 0–10 cm (root buds included): **0**
 Number of buds per shoot at a depth greater than 10 cm (root buds included): **0**
 Size of the belowground bud bank (root buds included): **5**
 Depth of the belowground bud bank (root buds included) [cm]: **1**

Trophic mode

Parasitism and mycoheterotrophy: **autotrophic**
 Carnivory: **non-carnivorous**
 Symbiotic nitrogen fixation: **no nitrogen-fixing symbionts**

Taxon origin

Origin in the Czech Republic: **archaeophyte**
 Invasion status: **casual**
 Geographic origin: **Europe, Mediterranean**
 Period of introduction: **Neolithic (5600–4200 BCE)**
 Introduction pathway: **unintentional - anthropogenic**



Ecological indicator values

Ellenberg-type indicator values

Light indicator value: **9 - full light plant, occurring only in fully irradiated places, not at less than 50% of diffuse radiation incident in an open area**

Temperature indicator value: **6 - transition between values 5 and 7**

Moisture indicator value: **5 - indicator of fresh soils, focus on soils of average moisture, missing on wet and on soils that frequently dry out**

Reaction indicator value: **7 - indicator of slightly acidic to slightly basic conditions, never occurring in very acidic conditions**

Nutrient indicator value: **7 - occurring at nutrient-rich sites more often than at average sites and only exceptionally at poor sites**

Salinity indicator value: **2 - oligohaline, often on soils with very low salt content**

Habitat and sociology

Occurrence in habitats

13 Anthropogenic vegetation

13A Annual vegetation of ruderal habitats: **2 - optimum**

13D Perennial thermophilous ruderal vegetation: **1 - rare occurrence**

Affinity to the forest environment

Affinity to the forest environment in Thermophyticum: **0 - taxon that does not spontaneously occur in Czech forests**

Affinity to the forest environment in Mesophyticum and Oreophyticum: **0 - taxon that does not spontaneously occur in Czech forests**

Diagnostic taxon

Diagnostic taxon of associations: [XBG06 *Atriplicetum roseae*](#)

Constant taxon

Constant taxon of associations: [XBG06 *Atriplicetum roseae*](#)

Dominant taxon

Dominant taxon of associations: [XBG06 *Atriplicetum roseae*](#)

Ecological specialization indices

Ecological specialization index for all vegetation types: **4.8**

Ecological specialization index for non-forest vegetation: **4.8**

Colonization ability

Index of colonization success (ICS): **2**

Index of colonization potential (ICP): **9**

Optimum successional age [years]: **3**

Distribution and frequency

Floristic zone: **northern temperate, southern temperate, submeridional, meridional**

Floristic region: **Europe, Western Asia**

Continental degree: **7**

Distribution range extension along the continentality gradient: **7**

Elevational belt in the Czech Republic: **lowlands, colline belt, submontane belt**

Occurrence frequency in the basic grid mapping cells and quadrants of the basic grid

mapping cells: 172

taxon.data.freq_in_quad: 267

Commonness in vegetation plots from the Czech Republic

Occurrence frequency in vegetation plots: **0 %**

Occurrence frequency in vegetation plots with a cover above 5%: **66.7 %**

Occurrence frequency in vegetation plots with a cover above 25%: **66.7 %**

Occurrence frequency in vegetation plots with a cover above 50%: **50 %**

Mean percentage cover in vegetation plots: **46.7 %**

Maximum percentage cover in vegetation plots: **88 %**

Number of habitats with taxon occurrence in the Czech Republic

Number of narrow habitats in which the taxon occurs: **2**

Number of narrow habitats in which the taxon has its optimum: **1**

Number of broad habitats in which the taxon occurs: **1**

Number of broad habitats in which the taxon has its optimum: **1**

Threats and protection

Red List 2017 (national categories): **C1t - critically threatened taxon, declining**

Red List 2017 (IUCN categories): **CR - critically endangered**

Legal protection: **not protected by law**