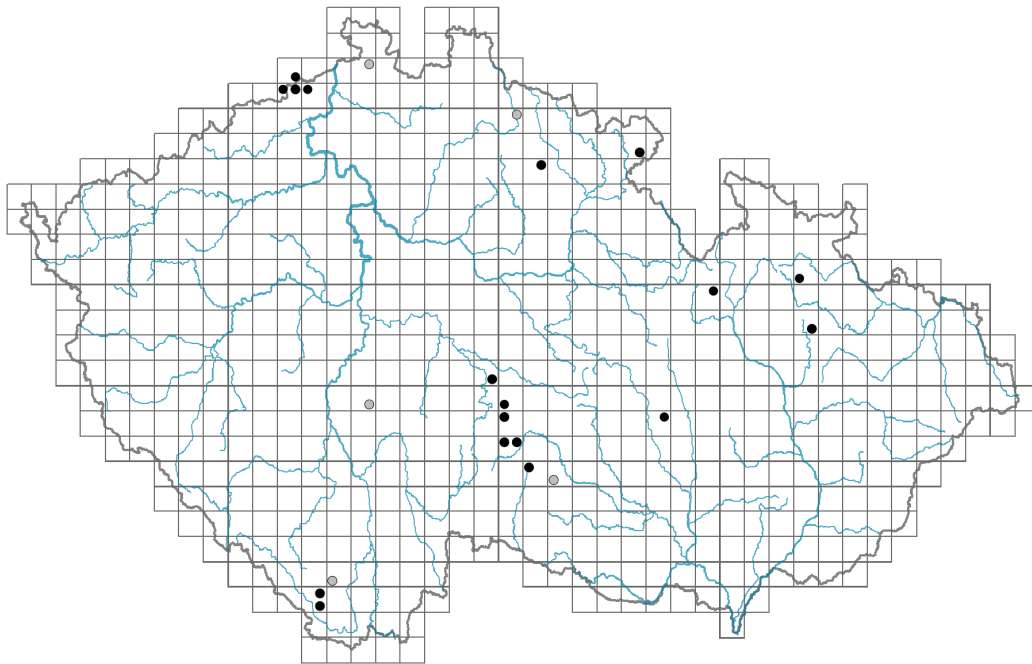


Calamagrostis purpurea

Distribution



© Alena Lepší

Map info

● revised records

○ unrevised records

On the map are not visualized records without the coordinates and records marked as incorrect or doubtful.

Habitus and growth type

Height [m]: **0.8-1.7**Growth form: **clonal herb**Life form: **hemicryptophyte**Life strategy: **CS - competitor/stress-tolerator**

Leaf

Leaf presence and metamorphosis: **leaves present, not modified**Leaf arrangement (phyllotaxis): **alternate**Leaf shape: **simple - entire**Stipules: **absent**Petiole: **absent**Leaf life span: **summer green**

Flower

Flowering period [month]: **June-July**Flower colour: **green**Perianth type: **reduced**Perianth fusion: **reduced**Inflorescence type: **panicula e spiculis composita**Dicliny: **synoecious**

© Dana Michalčová



© Dana Michalčová

Generative reproduction type: **facultative apomixis**

Pollination syndrome: **wind-pollination**

Fruit, seed and dispersal

Fruit type: **dry fruit - caryopsis**

Reproduction type: **by seed/spores and vegetatively**

Dispersal unit (diaspore): **fruit, infrutescence or its part**

Dispersal strategy: **Phragmites (mainly anemochory and hydrochory)**

Myrmecochory: **non-myrmecochorous (b)**



Belowground organs and clonality

Shoot metamorphosis: **stolon**

Storage organ: **stolon**

Type of clonal growth organ: **hypogeogenous rhizome**

Freely dispersible organs of clonal growth: **absent**

Shoot life span (cyclicality): **dicyclic or polycyclic shoots prevailing**

Branching type of stem-derived organs of clonal growth: **sympodial**

Primary root: **absent**

Persistence of the clonal growth organ [year]: **4**

Number of clonal offspring: **3.5**

Lateral spreading distance by clonal growth [m]: **0.07**

Clonal index: **5**

Bud bank

Number of buds per shoot at the soil surface (root buds excluded): **5**

Number of buds per shoot at a depth of 0–10 cm (root buds excluded): **15**

Number of buds per shoot at a depth greater than 10 cm (root buds excluded): **0**

Size of the belowground bud bank (root buds excluded): **20**

Depth of the belowground bud bank (root buds excluded) [cm]: **4**

Number of buds per shoot at the soil surface (root buds included): **5**

Number of buds per shoot at a depth of 0–10 cm (root buds included): **15**

Number of buds per shoot at a depth greater than 10 cm (root buds included): **0**

Size of the belowground bud bank (root buds included): **20**

Depth of the belowground bud bank (root buds included) [cm]: **4**



Trophic mode

Parasitism and mycoheterotrophy: **autotrophic**

Carnivory: **non-carnivorous**

Symbiotic nitrogen fixation: **no nitrogen-fixing symbionts**

Taxon origin

Origin in the Czech Republic: **native**

Ecological indicator values

Ellenberg-type indicator values

Light indicator value: **7 - half-light plant, mostly occurring at full light, but also in the shade up to about 30% of diffuse radiation incident in an open area**

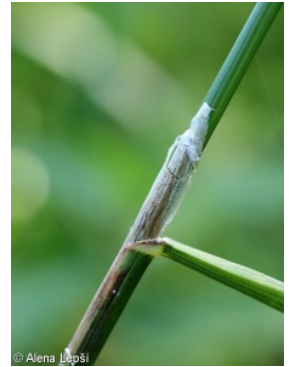
Temperature indicator value: **4 - transition between values 3 and 5**

Moisture indicator value: **8 - transition between values 7 and 9**

Reaction indicator value: **5x - indicator of moderate acidity, occurring rarely in strongly acidic as well as in neutral to alkaline conditions (generalist)**

Nutrient indicator value: **3 - occurring at nutrient-poor sites more frequently than at average sites and exceptionally at rich sites**

Salinity indicator value: **0 - not salt tolerant, glycophyte**



Habitat and sociology

Occurrence in habitats

4 Wetland and riverine herbaceous vegetation

4G Tall-sedge beds: **1 - rare occurrence**

5 Vegetation of springs and mires

5E Acidic moss-rich fens and peatland meadows: **2 - optimum**

5F Transitional mires: **1 - rare occurrence**

11 Heathlands and scrub

11I Willow carrs: **1 - rare occurrence**

Affinity to the forest environment

Affinity to the forest environment in Thermophyticum: **0 - taxon that does not spontaneously occur in Czech forests**

Affinity to the forest environment in Mesophyticum and Oreophyticum: **0 - taxon that does not spontaneously occur in Czech forests**

Colonization ability

Index of colonization success (ICS): **1**

Distribution and frequency

Floristic zone: **boreal, northern temperate, southern temperate**

Floristic region: **Europe, Western Asia**

Continental degree: **5**

Distribution range extension along the continentality gradient: **4**

Elevational belt in the Czech Republic: **submontane belt, montane belt**

Occurrence frequency in the basic grid mapping cells and quadrants of the basic grid mapping cells: **21**

taxon.data.freq_in_quad: **24**

Number of habitats with taxon occurrence in the Czech Republic

Number of narrow habitats in which the taxon occurs: **4**

Number of narrow habitats in which the taxon has its optimum: **1**

Number of broad habitats in which the taxon occurs: **3**

Number of broad habitats in which the taxon has its optimum: **1**

Threats and protection

Red List 2017 (national categories): **C2b - endangered taxon, rare and declining**

Red List 2017 (IUCN categories): **VU - vulnerable**

Legal protection: **critically threatened taxon**