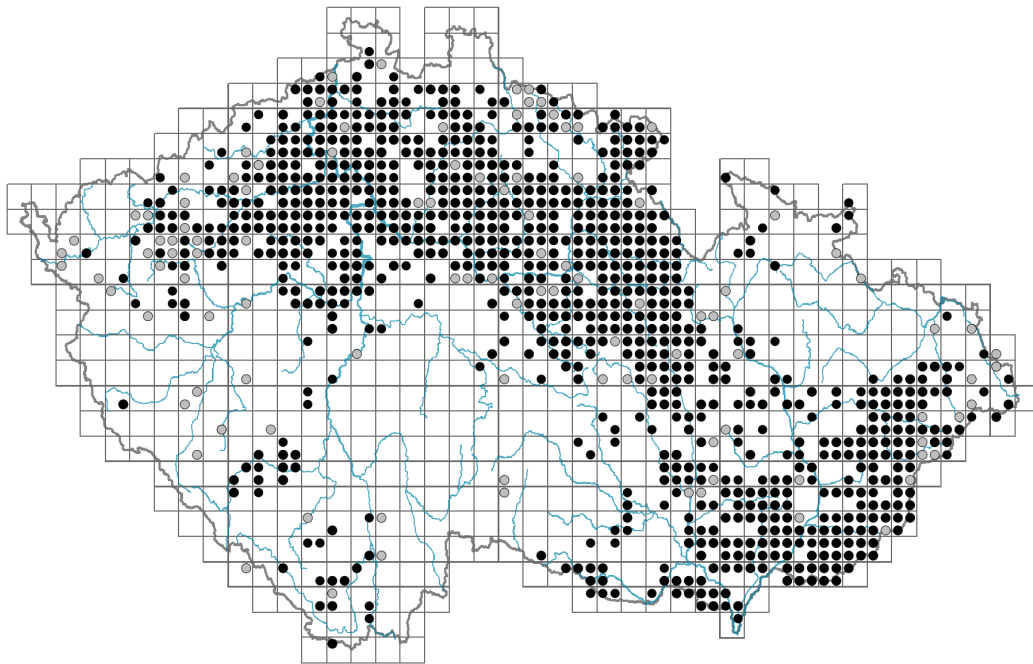


Carex flacca

Distribution



© Jan Pokorný

Map info

● revised records

○ unrevised records

On the map are not visualized records without the coordinates and records marked as incorrect or doubtful.

Habitus and growth type

Height [m]: **0.1-0.5**

Growth form: **clonal herb**

Life form: **hemicryptophyte (geophyte)**

Life strategy: **CSR - competitor/stress-tolerator/ruderal**

Life strategy (Pierce method based on leaf traits): **S/CSR**

Life strategy (Pierce method, C-score): **19.3 %**

Life strategy (Pierce method, S-score): **61.9 %**

Life strategy (Pierce method, R-score): **18.8 %**

Leaf

Leaf presence and metamorphosis: **leaves present, not modified**

Leaf arrangement (phyllotaxis): **alternate**

Leaf shape: **simple - entire**

Stipules: **absent**

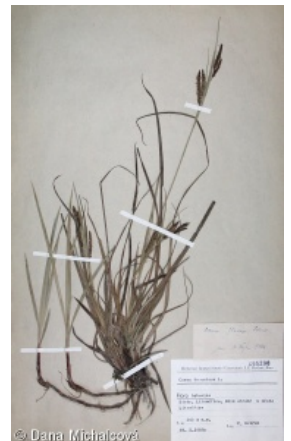
Petiole: **absent**

Leaf life span: **evergreen**

Leaf anatomy: **mesomorphic**

Flower

Flowering period [month]: **May-June**



© Dana Michalčová



© Milan Chytrý

Flowering phase: **4 Fagus sylvatica-Galeobdolon (start of mid-spring)**
 Flower colour: **brown**
 Perianth type: **flower achlamydeous**
 Inflorescence type: **spica e spiculis composita**
 Dicliny: **monoecious**
 Generative reproduction type: **mixed mating**
 Pollination syndrome: **wind-pollination**

Fruit, seed and dispersal

Fruit type: **dry fruit - nut enclosed in an utricle**
 Fruit colour: **green, brown, grey**
 Reproduction type: **mostly vegetatively, rarely by seed/spores**
 Dispersal unit (diaspore): **fruit, infrutescence or its part**
 Dispersal strategy: **Allium (mainly autochory)**
 Myrmecochory: **probably myrmecochorous**

Belowground organs and clonality

Shoot metamorphosis: **stolon, rhizome**
 Storage organ: **stolon, rhizome**
 Type of clonal growth organ: **hypogeogenous rhizome**
 Freely dispersible organs of clonal growth: **absent**
 Shoot life span (cyclicality): **dicyclic or polycyclic shoots prevailing**
 Branching type of stem-derived organs of clonal growth: **sympodial**
 Primary root: **absent**
 Persistence of the clonal growth organ [year]: **4**
 Number of clonal offspring: **5.2**
 Lateral spreading distance by clonal growth [m]: **0.09**
 Clonal index: **5**
 Bud bank
 Number of buds per shoot at the soil surface (root buds excluded): **5**
 Number of buds per shoot at a depth of 0–10 cm (root buds excluded): **15**
 Number of buds per shoot at a depth greater than 10 cm (root buds excluded): **0**
 Size of the belowground bud bank (root buds excluded): **20**
 Depth of the belowground bud bank (root buds excluded) [cm]: **4**
 Number of buds per shoot at the soil surface (root buds included): **5**
 Number of buds per shoot at a depth of 0–10 cm (root buds included): **15**
 Number of buds per shoot at a depth greater than 10 cm (root buds included): **0**
 Size of the belowground bud bank (root buds included): **20**
 Depth of the belowground bud bank (root buds included) [cm]: **4**

Trophic mode

Parasitism and mycoheterotrophy: **autotrophic**
 Carnivory: **non-carnivorous**
 Symbiotic nitrogen fixation: **no nitrogen-fixing symbionts**



Karyology

Chromosome number (2n): **76**

Ploidy level (x): **4**

2C genome size [Mbp]: **2057.18**

1Cx monoploid genome size [Mbp]: **514.3**

Genomic GC content: **37.1 %**

Taxon origin

Origin in the Czech Republic: **native**

Ecological indicator values

Ellenberg-type indicator values

Light indicator value: **7 - half-light plant, mostly occurring at full light, but also in the shade up to about 30% of diffuse radiation incident in an open area**

Temperature indicator value: **5 - moderate heat indicator, occurring from lowland to montane belt, mainly in submontane-temperate areas**

Moisture indicator value: **6 - transition between values 5 and 7**

Reaction indicator value: **8 - transition between values 7 and 9, occurring mostly in calcium-rich conditions**

Nutrient indicator value: **3 - occurring at nutrient-poor sites more frequently than at average sites and exceptionally at rich sites**

Salinity indicator value: **1 - salt tolerant, mostly on low-salt to salt-free soils, but occasionally on slightly salty soils**

Indicator values for disturbance

Whole-community disturbance frequency indicator value: **-0.79**

Herb layer disturbance frequency indicator value: **-0.31**

Whole-community disturbance severity indicator value: **0.2**

Herb layer disturbance severity indicator value: **0.23**

Whole-community structure based disturbance indicator value: **0.46**

Herb layer structure-based disturbance indicator value: **0.59**

Habitat and sociology

Occurrence in habitats

4 Wetland and riverine herbaceous vegetation

4A Reed-beds of eutrophic still waters: **1 - rare occurrence**

4E Reed vegetation of brooks: **1 - rare occurrence**

4G Tall-sedge beds: **1 - rare occurrence**

5 Vegetation of springs and mires

5A Hard-water springs with tufa formation: **2 - optimum**

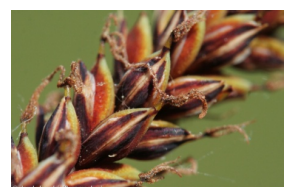
5D Calcareous fens: **2 - optimum**

5E Acidic moss-rich fens and peatland meadows: **1 - rare occurrence**

6 Meadows and mesic pastures

6A Mesic Arrhenatherum meadows: **1 - rare occurrence**

6C Pastures and park grasslands: **1 - rare occurrence**



6D Alluvial meadows of lowland rivers: **1 - rare occurrence**

6E Wet *Cirsium* meadows: **1 - rare occurrence**

6F Intermittently wet *Molinia* meadows: **2 - optimum**

8 Dry grasslands

8C Narrow-leaved sub-continental steppes: **1 - rare occurrence**

8D Broad-leaved dry grasslands: **2 - optimum**

8F Thermophilous forest fringe vegetation: **1 - rare occurrence**

10 Saline vegetation

10I Inland saline meadows: **2 - optimum**

11 Heathlands and scrub

11I Willow carrs: **1 - rare occurrence**

12 Forests

12A Alder carrs: **2 - optimum**

12C Oak-hornbeam forests: **1 - rare occurrence**

12F Limestone beech forests: **2 - optimum**

12H Peri-Alpidic basiphilous thermophilous oak forests: **1 - rare occurrence**

12I Sub-continental thermophilous oak forests: **1 - rare occurrence**

12K Acidophilous oak forests: **1 - rare occurrence**

12O Peri-Alpidic pine forests: **1 - rare occurrence**

12W Pine and larch plantations: **1 - rare occurrence**

Affinity to the forest environment

Affinity to the forest environment in Thermophyticum: **2.2 - taxon occurring partly in the forest, but mainly in open vegetation**

Affinity to the forest environment in Mesophyticum and Oreophyticum: **2.2 - taxon occurring partly in the forest, but mainly in open vegetation**

Diagnostic taxon

Diagnostic taxon of alliances: [RBA *Caricion davallianae*](#)

Diagnostic taxon of associations: [RBA02 *Carici flavae-Cratoneuretum filicini*](#), [RBA06 *Eleocharitetum quinqueflorae*](#), [THE04 *Plantagini maritimae-Caricetum flacca*](#)

Constant taxon

Constant taxon of associations: [RBA02 *Carici flavae-Cratoneuretum filicini*](#), [RBA06 *Eleocharitetum quinqueflorae*](#), [THE04 *Plantagini maritimae-Caricetum flacca*](#)

Dominant taxon

Dominant taxon of associations: [RBA02 *Carici flavae-Cratoneuretum filicini*](#), [RBA03 *Valeriano simplicifoliae-Caricetum flavae*](#), [TDF11 *Junco inflexi-Menthetum longifoliae*](#), [THE01 *Scabioso ochroleucae-Brachypodietum pinnati*](#), [THE04 *Plantagini maritimae-Caricetum flacca*](#)

Ecological specialization indices

Ecological specialization index for all vegetation types: **4.7**

Ecological specialization index for non-forest vegetation: **4.8**

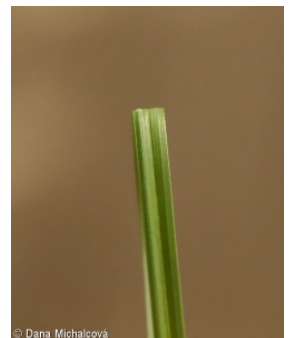
Ecological specialization index for forest vegetation: **4.3**

Colonization ability

Index of colonization success (ICS): **2**

Index of colonization potential (ICP): **1**

Optimum successional age [years]: **75**



Distribution and frequency

Floristic zone: **northern temperate, southern temperate, submeridional, meridional**

Floristic region: **Europe**

Distribution range extension along the continentality gradient: **7**

Elevational belt in the Czech Republic: **lowlands, colline belt, submontane belt**

Occurrence frequency in the basic grid mapping cells and quadrants of the basic grid mapping cells: **422**

taxon.data.freq_in_quad: **1006**

Commonness in vegetation plots from the Czech Republic

Occurrence frequency in vegetation plots: **1.4 %**

Occurrence frequency in vegetation plots with a cover above 5%: **25.5 %**

Occurrence frequency in vegetation plots with a cover above 25%: **9.3 %**

Occurrence frequency in vegetation plots with a cover above 50%: **0.5 %**

Mean percentage cover in vegetation plots: **7.4 %**

Maximum percentage cover in vegetation plots: **63 %**

Number of habitats with taxon occurrence in the Czech Republic

Number of narrow habitats in which the taxon occurs: **24**

Number of narrow habitats in which the taxon has its optimum: **7**

Number of broad habitats in which the taxon occurs: **7**

Number of broad habitats in which the taxon has its optimum: **5**

Threats and protection

Red List 2017 (national categories): **taxon is not on the Red List**

Red List 2017 (IUCN categories): **LC(NA) - least concern (taxon is not on the Red List)**

Legal protection: **not protected by law**